

AVAILABLE FOR LEASE

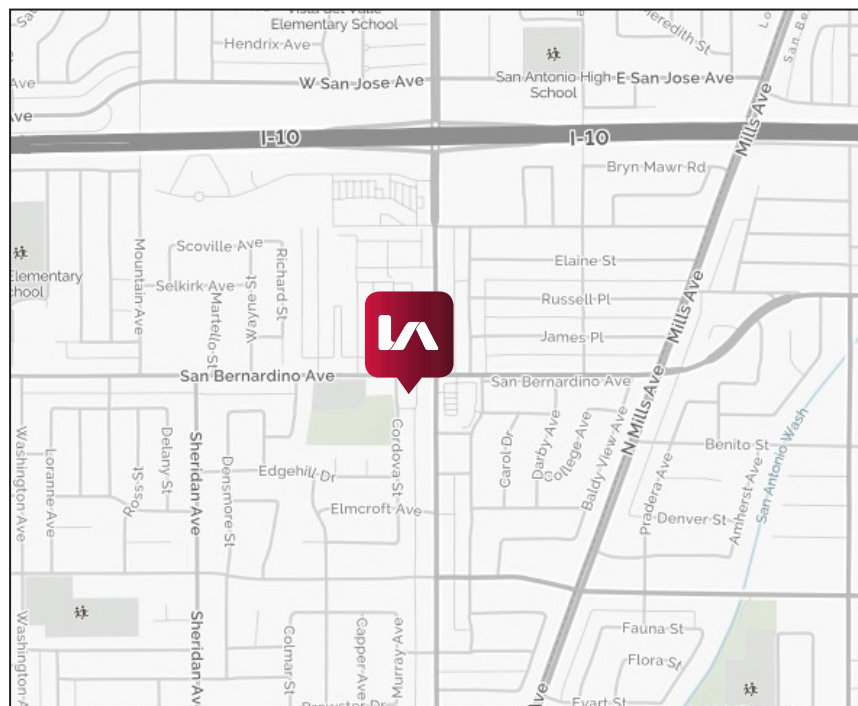
±2,800 SF



1532 E. San Bernardino Ave., Pomona, CA 91767

PROPERTY FEATURES

- ±2,800 SF Medical Suite
- Multiple Exam Rooms, Doctors Office's & Large Waiting Room
- Close Proximity to Indian Hill & I-10 Freeway
- Available for Immediate Occupancy



FOR MORE INFORMATION PLEASE CONTACT:

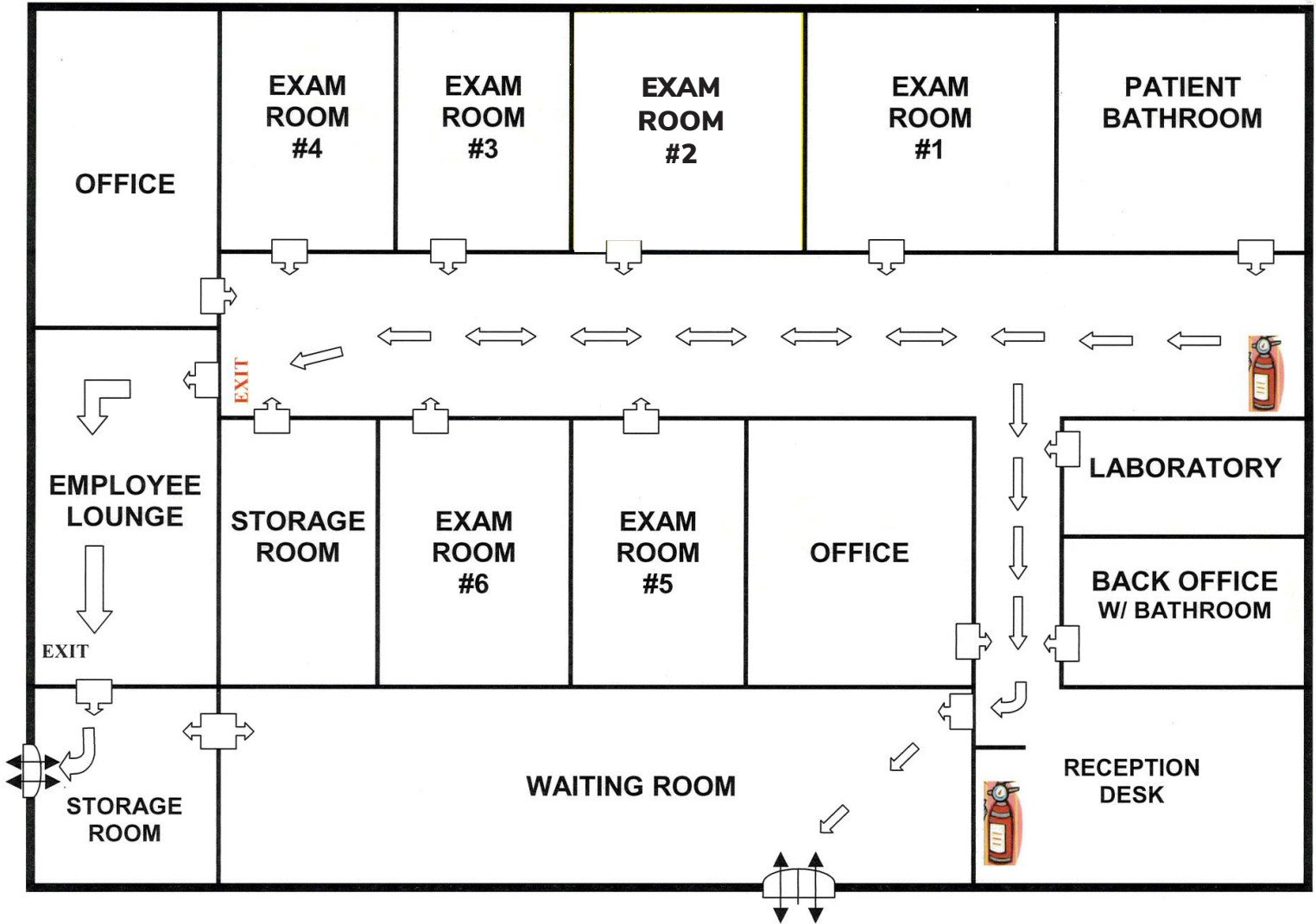
Brian Melkesian, Senior Vice President
D 909.373.2943
bmelkesian@lee-assoc.com
DRE #01839590

Lee & Associates® - Ontario

3535 Inland Empire Blvd, Ontario, CA 91764 | 909.989.7771 | lee-assoc.com
Corp ID 00976995

All information furnished regarding property for sale, rental or financing is from sources deemed reliable, but no warranty or representation is made to the accuracy thereof and same is submitted to errors, omissions, change of price, rental or other conditions prior to sale, lease or financing or withdrawal without notice. No liability of any kind is to be imposed on the broker herein.

1532 E. SAN BERNARDINO AVE.
BUILDING FLOOR PLAN



FOR MORE INFORMATION PLEASE CONTACT:

Brian Melkesian, Senior Vice President
D 909.373.2943
bmelkesian@lee-assoc.com
DRE #01839590

Lee & Associates® - Ontario

3535 Inland Empire Blvd, Ontario, CA 91764 | 909.989.7771 | lee-assoc.com
Corp ID 00976995

All information furnished regarding property for sale, rental or financing is from sources deemed reliable, but no warranty or representation is made to the accuracy thereof and same is submitted to errors, omissions, change of price, rental or other conditions prior to sale, lease or financing or withdrawal without notice. No liability of any kind is to be imposed on the broker herein.