

FOR LEASE

NEW GROCERY ANCHORED RETAIL CENTERS 6012 & 6034 GEMINI DRIVE, MADISON, WISCONSIN



Cottage Grove, WI

Cottage Grove Rd. 10,400 AADT

metro market
A Division of Roundy's
(60,000 Sq. Ft. Grocery Store)

Great Clips
Relax. You're at Great Clips.

Four Lakes DENTAL

Future Library

**Up to 4,000 Sq. Ft.
Available**

Gemini Dr.

Papa Murphy's
TAKE 'N BAKE PIZZA

LEE & ASSOCIATES
COMMERCIAL REAL ESTATE SERVICES

For more information,
please contact:

Steve Doran
Direct: (608) 327-4006
sdoran@lee-associates.com



FOR LEASE

NEW GROCERY ANCHORED RETAIL CENTERS 6012 & 6034 GEMINI DRIVE, MADISON, WISCONSIN

Building Details and Demographics

New retail center to start construction spring of 2016 in front of Madison's newest grocery store, Metro Market (Roundy's operated).

This retail building will be located directly in front of Metro Markets main entrance/exit and share parking with the grocery store. The development is located in the Grandview Commons subdivision on the east side of Madison. This area has been labeled as the fastest growing area on Madison's east side. Surrounding retailers include The Great Dane Pub & Brewing Co., Edward Jones, Great Clips, Papa Murphy's, Four Lakes Dental and other boutique users.

Asking Rent:

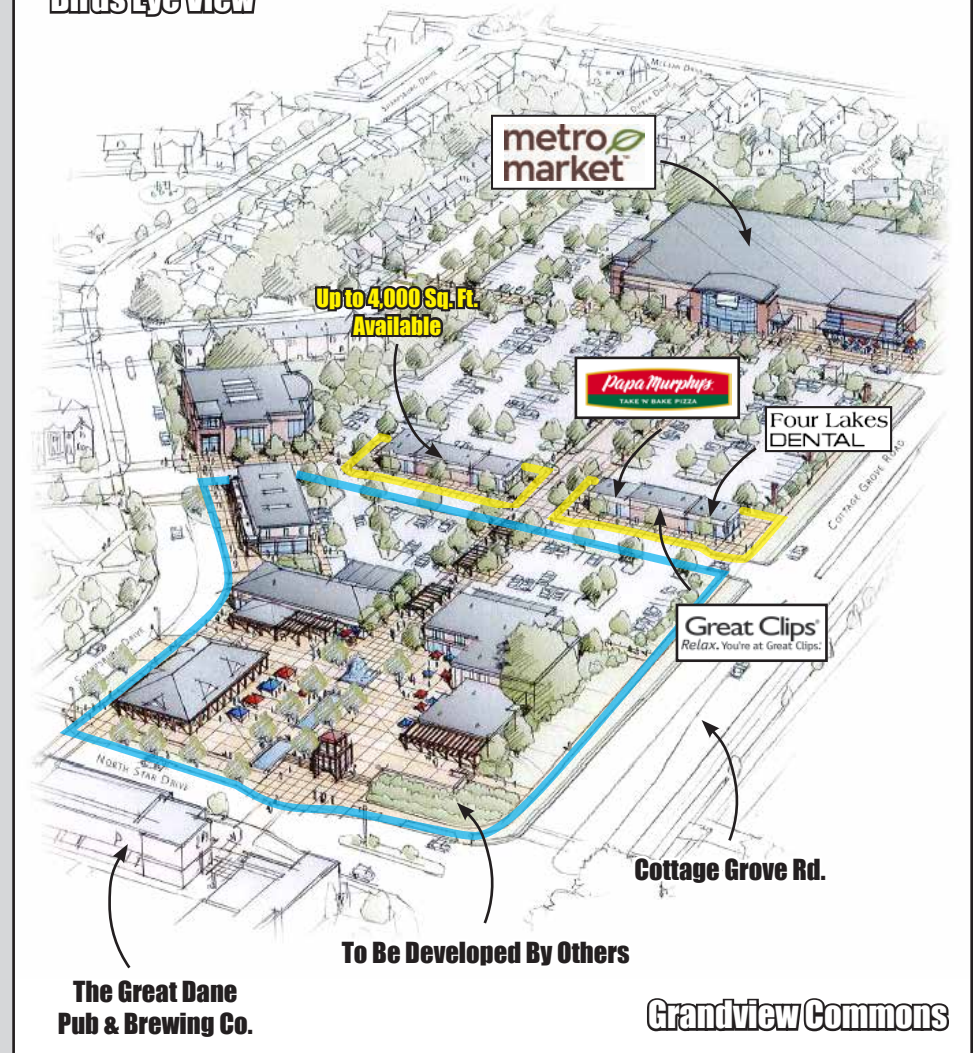
End Caps: \$32.00/Sq. Ft. (NNN)

Inline: \$28.00 /Sq. Ft. (NNN)

Demographics	2 Miles	5 Miles	10 Miles
Population	26,279	102,757	297,101
Average Household Income	\$72,755	\$69,531	\$70,222

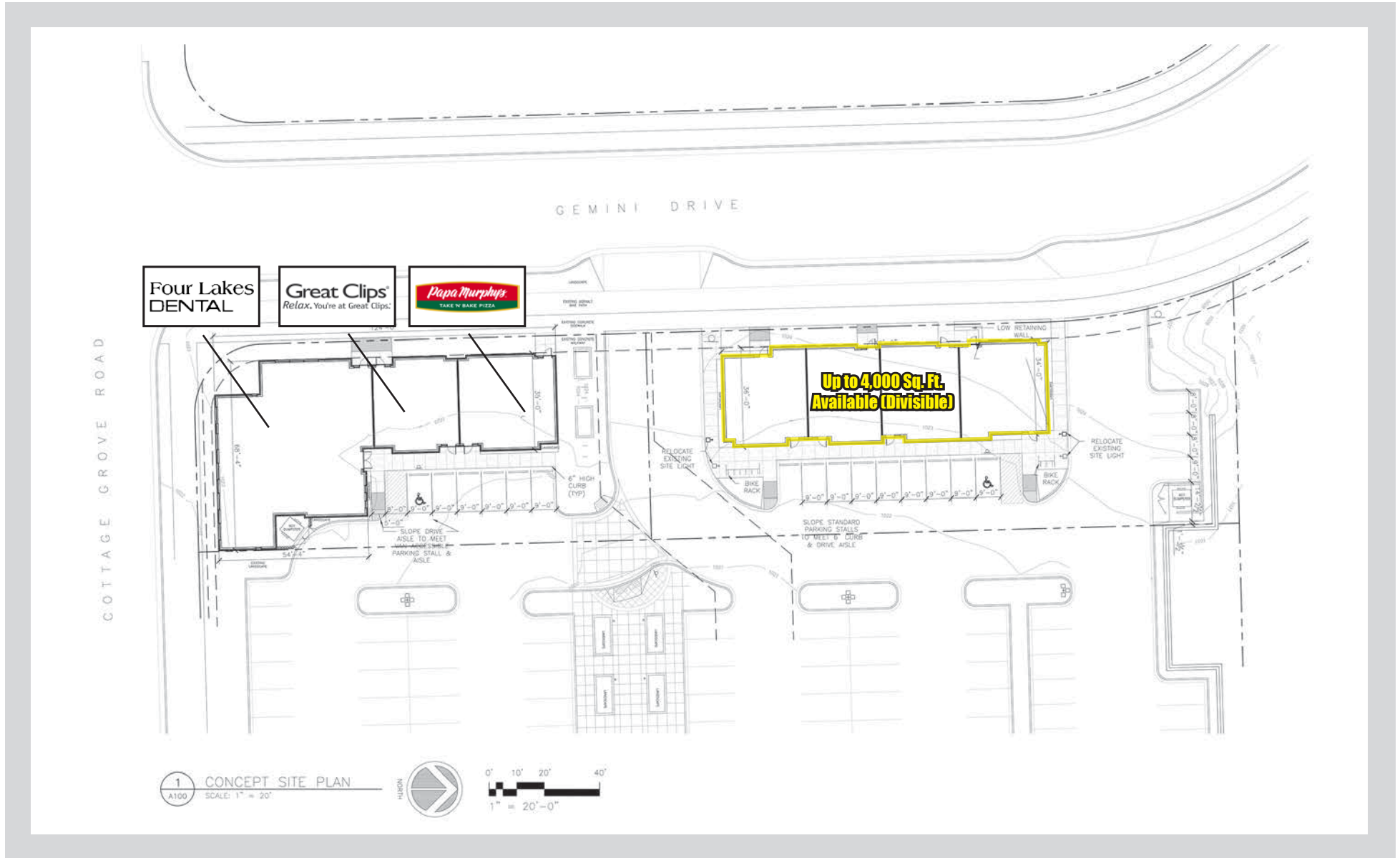


Birds Eye View



FOR LEASE

NEW GROCERY ANCHORED RETAIL CENTERS 6012 & 6034 GEMINI DRIVE, MADISON, WISCONSIN



FOR LEASE

NEW GROCERY ANCHORED RETAIL CENTERS 6012 & 6034 GEMINI DRIVE, MADISON, WISCONSIN

West Elevation



East Elevation



FOR LEASE

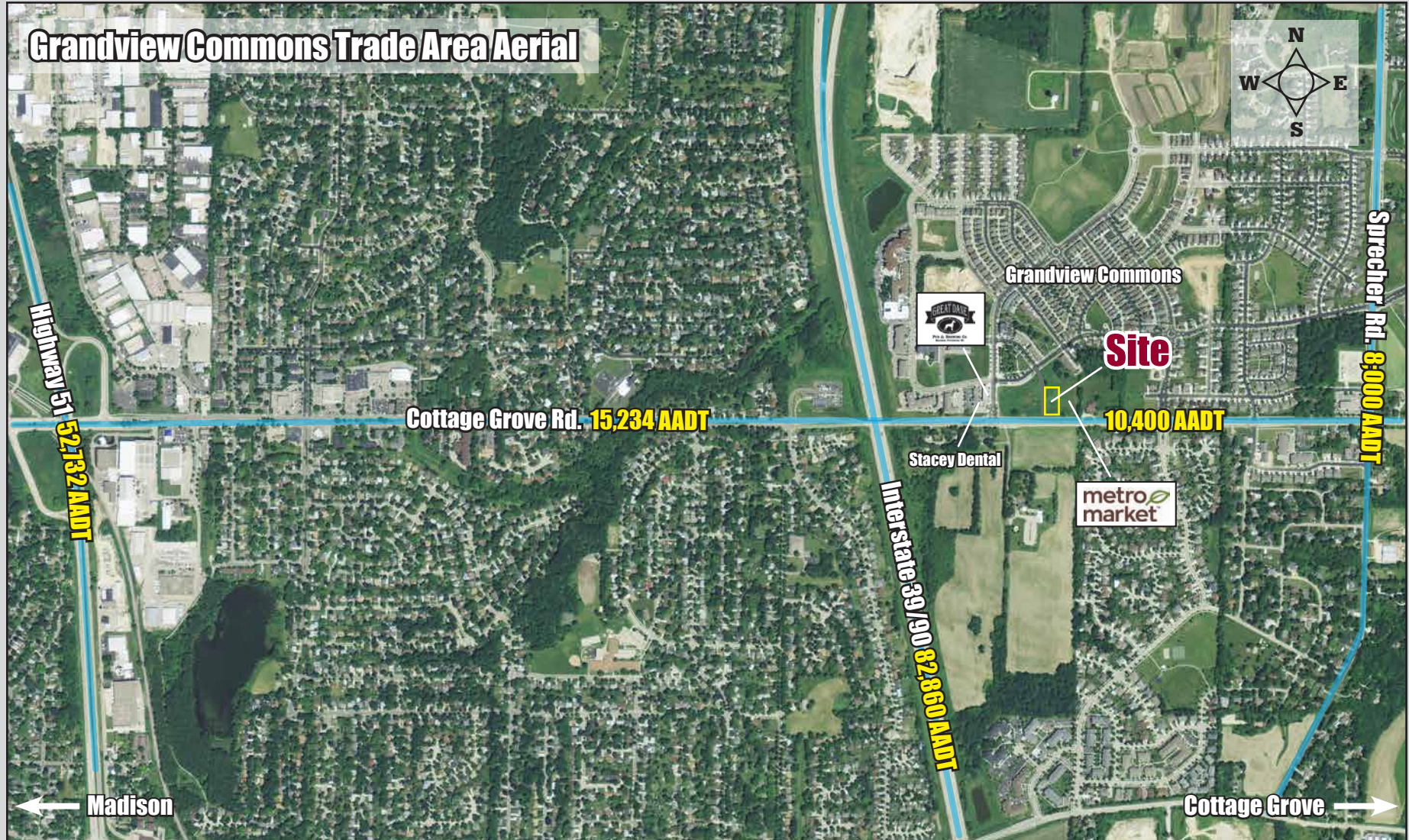
NEW GROCERY ANCHORED RETAIL CENTERS 6012 & 6034 GEMINI DRIVE, MADISON, WISCONSIN



FOR LEASE

NEW GROCERY ANCHORED RETAIL CENTERS

6012 & 6034 GEMINI DRIVE, MADISON, WISCONSIN



BROKER DISCLOSURE TO NON-RESIDENTIAL CUSTOMERS

1 Prior to negotiating on your behalf the Broker must provide you the following disclosure statement:

2 **BROKER DISCLOSURE TO CUSTOMERS**

- 3 You are a customer of the broker. The broker is either an agent of another party in the transaction or a subagent of another broker
4 who is the agent of another party in the transaction. The broker, or a salesperson acting on behalf of the broker, may provide
5 brokerage services to you. Whenever the broker is providing brokerage services to you, the broker owes you, the customer, the
6 following duties:
- 7 ■ The duty to provide brokerage services to you fairly and honestly.
 - 8 ■ The duty to exercise reasonable skill and care in providing brokerage services to you.
 - 9 ■ The duty to provide you with accurate information about market conditions within a reasonable time if you request it, unless
10 disclosure of the information is prohibited by law.
 - 11 ■ The duty to disclose to you in writing certain material adverse facts about a property, unless disclosure of the information is
12 prohibited by law (**See Lines 47-55**).
 - 13 ■ The duty to protect your confidentiality. Unless the law requires it, the broker will not disclose your confidential information or the
14 confidential information of other parties (**See Lines 22-39**).
 - 15 ■ The duty to safeguard trust funds and other property the broker holds.
 - 16 ■ The duty, when negotiating, to present contract proposals in an objective and unbiased manner and disclose the advantages and
17 disadvantages of the proposals.
- 18 Please review this information carefully. A broker or salesperson can answer your questions about brokerage services, but if you
19 need legal advice, tax advice, or a professional home inspection, contact an attorney, tax advisor, or home inspector.
20 This disclosure is required by section 452.135 of the Wisconsin statutes and is for information only. It is a plain-language summary of
21 a broker's duties to a customer under section 452.133 (1) of the Wisconsin statutes.

22 **CONFIDENTIALITY NOTICE TO CUSTOMERS**

23 **BROKER WILL KEEP CONFIDENTIAL ANY INFORMATION GIVEN TO BROKER IN CONFIDENCE, OR ANY INFORMATION**
24 **OBTAINED BY BROKER THAT HE OR SHE KNOWS A REASONABLE PERSON WOULD WANT TO BE KEPT CONFIDENTIAL,**
25 **UNLESS THE INFORMATION MUST BE DISCLOSED BY LAW OR YOU AUTHORIZE THE BROKER TO DISCLOSE PARTICULAR**
26 **INFORMATION. A BROKER SHALL CONTINUE TO KEEP THE INFORMATION CONFIDENTIAL AFTER BROKER IS NO LONGER**
27 **PROVIDING BROKERAGE SERVICES TO YOU.**

28 **THE FOLLOWING INFORMATION IS REQUIRED TO BE DISCLOSED BY LAW:**

- 29 1. **MATERIAL ADVERSE FACTS, AS DEFINED IN SECTION 452.01 (5g) OF THE WISCONSIN STATUTES (SEE LINES 47-55).**
- 30 2. **ANY FACTS KNOWN BY THE BROKER THAT CONTRADICT ANY INFORMATION INCLUDED IN A WRITTEN INSPECTION**
31 **REPORT ON THE PROPERTY OR REAL ESTATE THAT IS THE SUBJECT OF THE TRANSACTION.**
- 32 **TO ENSURE THAT THE BROKER IS AWARE OF WHAT SPECIFIC INFORMATION YOU CONSIDER CONFIDENTIAL, YOU MAY LIST**
33 **THAT INFORMATION BELOW (SEE LINES 35-36). AT A LATER TIME, YOU MAY ALSO PROVIDE THE BROKER WITH OTHER**
34 **INFORMATION YOU CONSIDER TO BE CONFIDENTIAL.**

35 **CONFIDENTIAL INFORMATION:**

36 _____
37 **NON-CONFIDENTIAL INFORMATION** (The following information may be disclosed by Broker):

38 _____
39 **(INSERT INFORMATION YOU AUTHORIZE THE BROKER TO DISCLOSE SUCH AS FINANCIAL QUALIFICATION INFORMATION.)**

40 **CONSENT TO TELEPHONE SOLICITATION**

41 I/We agree that the Broker and any affiliated settlement service providers (for example, a mortgage company or title company) may
42 call our/my home or cell phone numbers regarding issues, goods and services related to the real estate transaction until I/we
43 withdraw this consent in writing. **List Home/Cell Numbers:**

44 **SEX OFFENDER REGISTRY**

45 *Notice: You may obtain information about the sex offender registry and persons registered with the registry by contacting the*
46 *Wisconsin Department of Corrections on the Internet at: <http://offender.doc.state.wi.us/public/> or by phone at 608-240-5830.*

47 **DEFINITION OF MATERIAL ADVERSE FACTS**

48 A "material adverse fact" is defined in Wis. Stat. § 452.01(5g) as an adverse fact that a party indicates is of such significance, or that
49 is generally recognized by a competent licensee as being of such significance to a reasonable party, that it affects or would affect
50 the party's decision to enter into a contract or agreement concerning a transaction or affects or would affect the party's decision
51 about the terms of such a contract or agreement. An "adverse fact" is defined in Wis. Stat. § 452.01(1e) as a condition or occurrence
52 that a competent licensee generally recognizes will significantly and adversely affect the value of the property, significantly reduce
53 the structural integrity of improvements to real estate, or present a significant health risk to occupants of the property; or information
54 that indicates that a party to a transaction is not able to or does not intend to meet his or her obligations under a contract or
55 agreement made concerning the transaction.

No representation is made as to the legal validity of any provision of any provision in any specific transaction.
Copyright 2007 by Wisconsin REALTORS® Association