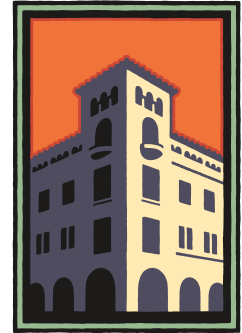


FOR LEASE

251 California Avenue, Palo Alto, CA



**PREMIER
PROPERTIES**
COMMERCIAL
REAL ESTATE



RETAIL, RESTAURANT, FINANCIAL SERVICES

Excellent Palo Alto Location (California Avenue Business District)

±3,144 SQ. FT. - Available Immediately

BRAD EHIKIAN
Partner

Phone: 650.618.3001
brad.ehikian@prprop.com
dre license #01736391

JON GOLDMAN
Partner

Phone: 650.618.3003
jon.goldman@prprop.com
dre license #01295503

JESSE EBNER
Associate

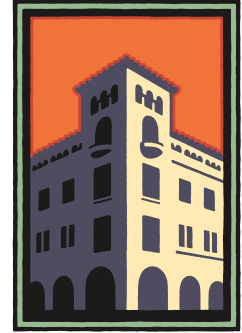
Phone: 650.618.3017
jesse.ebner@prprop.com
dre license #02055989

FOR PROPERTY DETAILS AND MORE LISTINGS

PremierPaloAlto.com

FOR LEASE

251 California Avenue, Palo Alto, CA



**PREMIER
PROPERTIES**
COMMERCIAL
REAL ESTATE

PROPERTY DESCRIPTION

- Excellent Palo Alto Location in the California Avenue Business District
- Located on the Ground Floor
- Tall Ceilings
- Prominent Signage Opportunities
- Great Location for Bank / Financial Services
- Large Storefront Windows
- Walking Distance to Caltrain & Stanford Research Park
- Surrounded by Free Street Parking & Public Parking Lots



BRAD EHIKIAN
Partner

Phone: 650.618.3001
brad.ehikian@prprop.com
dre license #01736391

JON GOLDMAN
Partner

Phone: 650.618.3003
jon.goldman@prprop.com
dre license #01295503

JESSE EBNER
Associate

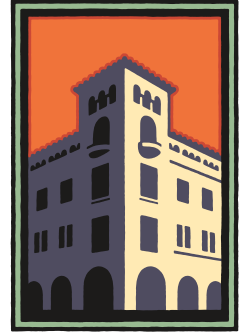
Phone: 650.618.3017
jesse.ebner@prprop.com
dre license #02055989

FOR PROPERTY DETAILS AND MORE LISTINGS

PremierPaloAlto.com

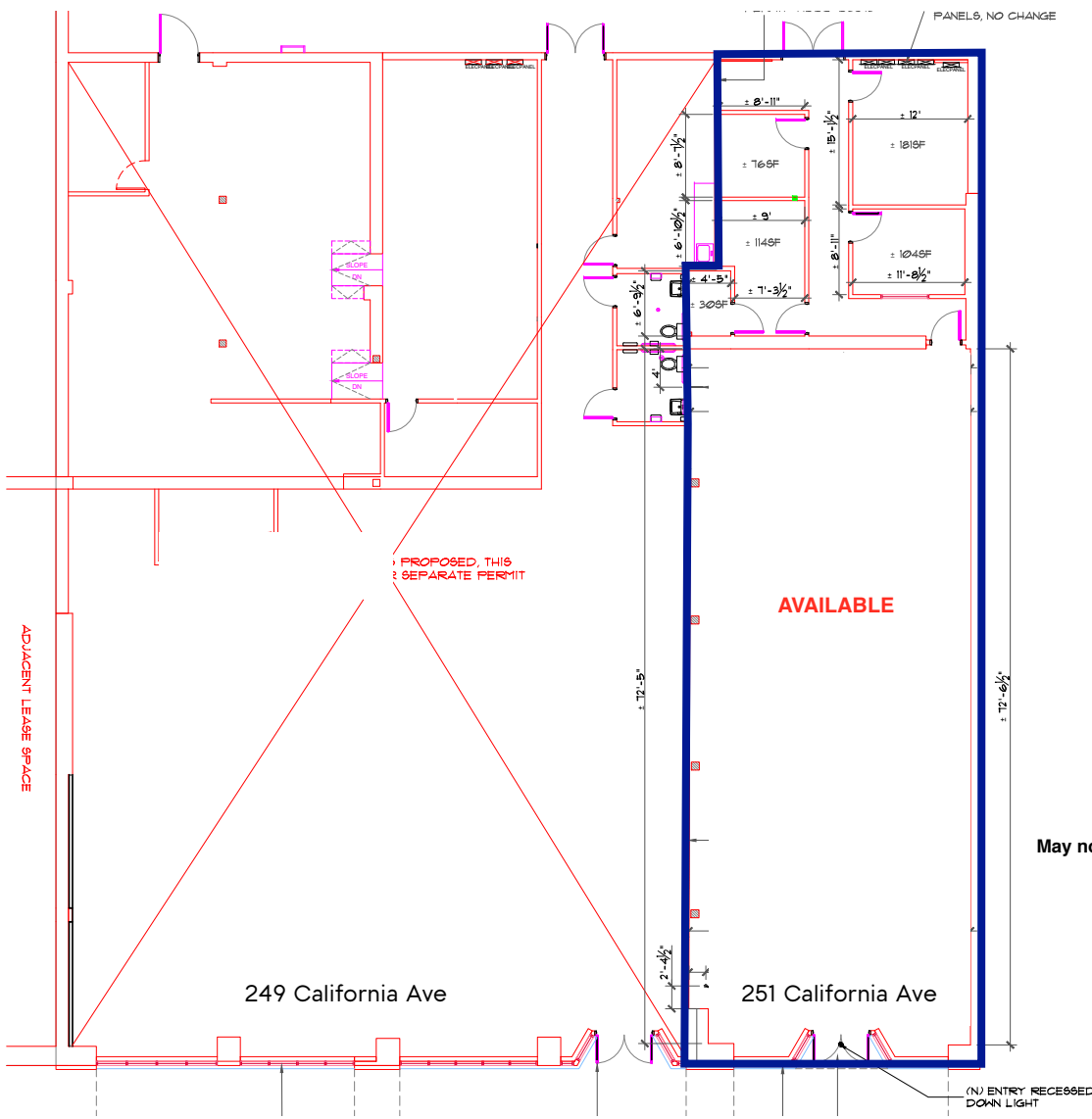
FOR LEASE

251 California Avenue, Palo Alto, CA



PREMIER PROPERTIES
COMMERCIAL
REAL ESTATE

FLOOR PLAN



May not be accurate / to scale

BRAD EHIKIAN
Partner

Phone: 650.618.3001
brad.ehikian@prprop.com
dre license #01736391

JON GOLDMAN
Partner

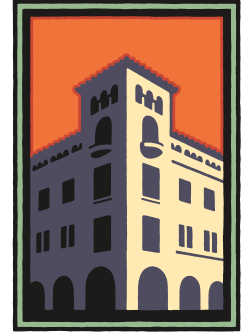
Phone: 650.618.3003
jon.goldman@prprop.com
dre license #01295503

JESSE EBNER
Associate

Phone: 650.618.3017
jesse.ebner@prprop.com
dre license #02055989

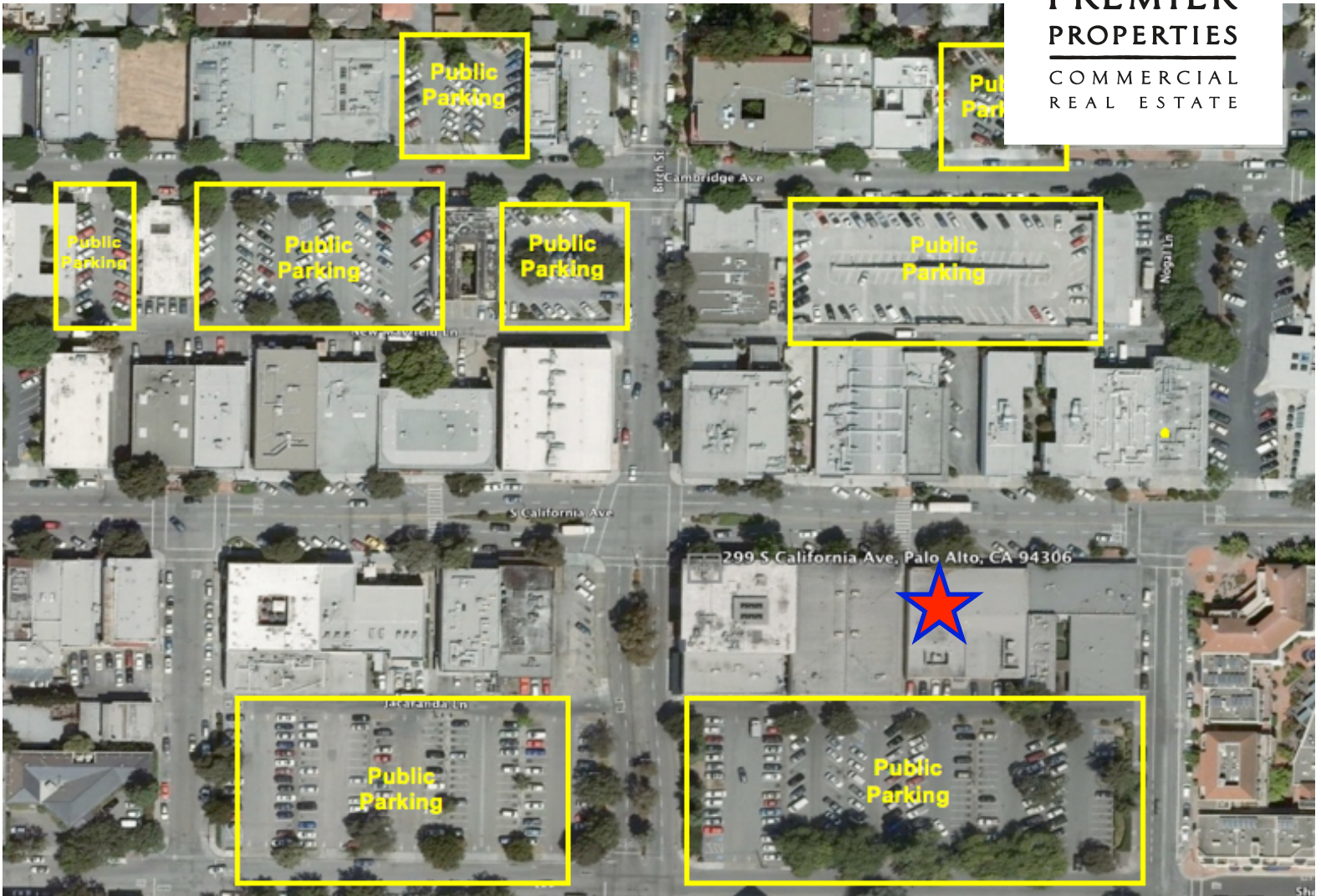
FOR LEASE

251 California Avenue, Palo Alto, CA



**PREMIER
PROPERTIES**
COMMERCIAL
REAL ESTATE

PUBLIC PARKING MAP



Neither the property owner nor Premier Property Management make any representation or warranty with regard to the information contained within this advertising flyer and the information contained herein should not be relied upon for validity, accuracy, or completeness. Prior to submitting an offer, prospective purchasers or tenants should perform their own due diligence including consultation with their legal and tax counsel in order to arrive at an independent evaluation of the property.

BRAD EHIKIAN
Partner

Phone: 650.618.3001
brad.ehikian@prprop.com
dre license #01736391

JON GOLDMAN
Partner

Phone: 650.618.3003
jon.goldman@prprop.com
dre license #01295503

JESSE EBNER
Associate

Phone: 650.618.3017
jesse.ebner@prprop.com
dre license #02055989

FOR PROPERTY DETAILS AND MORE LISTINGS

PremierPaloAlto.com