

For Sale

Property Summary

A fully assembled 10+ acre hard corner site, located on the north-west quadrant of I-49 and Gloria Switch Rd. This tract is located where the City of Lafayette & Carencro meet, which is growing at a healthy pace – both residentially and commercially. Being one of the last large hard corner sites available, at an I-49 interchange, the configuration will allow for an anchor, as well as a carveout of multiple pad sites along the frontage.

Land Size

- 10.116 Acres

2019 Demographics

	1 mi.	3 mi.	5 mi.
Population	3,360	26,397	70,082
Avg. HH Income	\$46,863	\$46,695	\$45,540
Households	1,487	10,640	27,909



Ryan Pécot

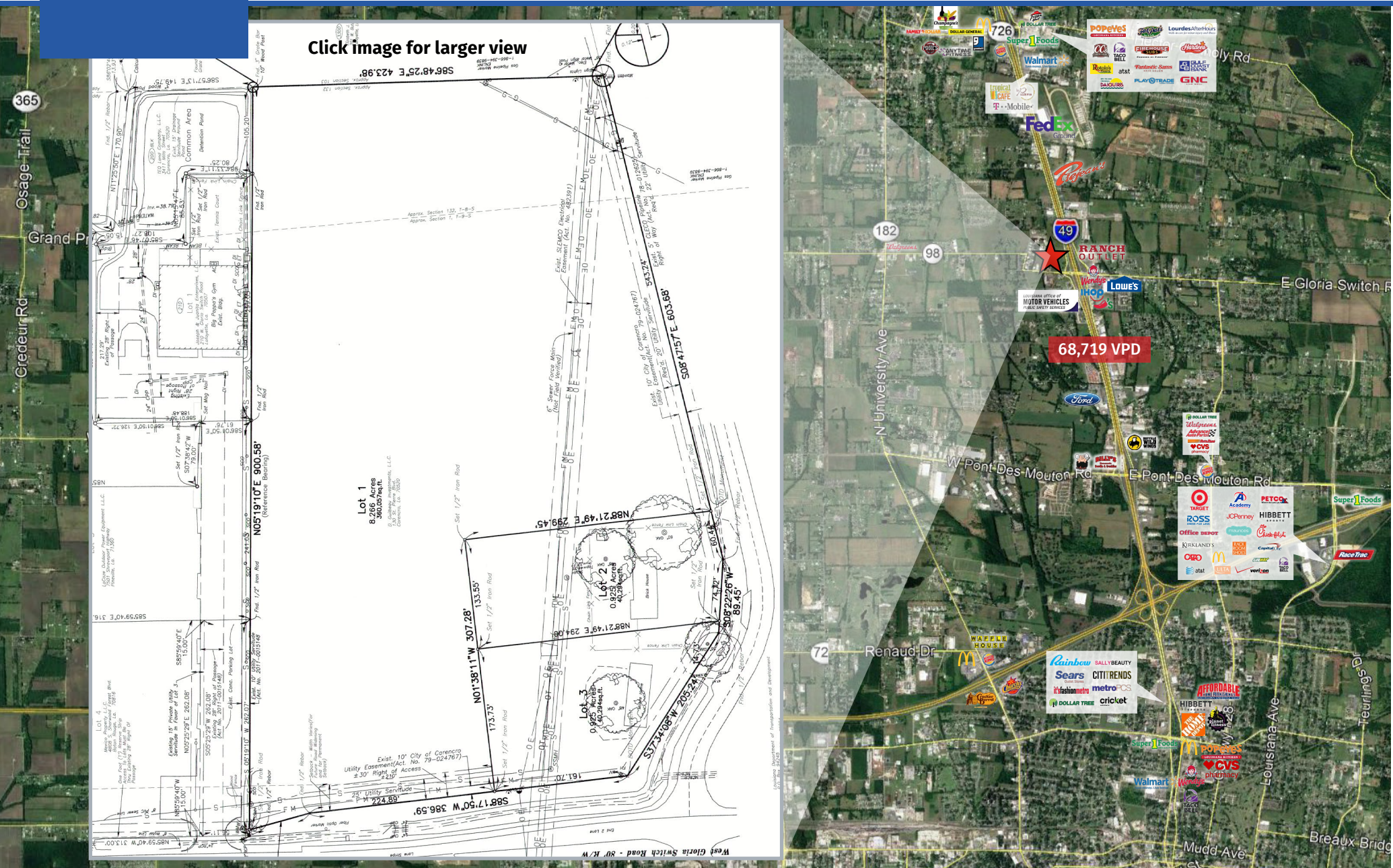
Office: 337-234-4481

Direct: 337-572-0246

rpecot@stirlingprop.com

Carencro Development Land

I-49 and E Gloria Switch Rd, Carencro, LA



Click image for larger view

Lot 1
8.266 Acres
360,057 sq. ft.
Common Area
Common Area
Division Point