

PARK PLACE

A NEIGHBORHOOD CENTER



LOCATION

NEC Natomas Boulevard & Del Paso Road
Sacramento, California

ANCHOR TENANT

Raley's

SIZE

±108,358 square feet (GLA)

AVAILABILITY

±1,050 SF INLINE SPACE
±2,040 SF 2nd GENERATION SALON SPACE (end cap)

TRAFFIC COUNTS

Natomas Blvd	±26,476 ADT (City of Sac - 2012)
Del Paso Road at Truxel	±17,280 ADT (City of Sac - 2012)
WB Del Paso Road	±13,633 ADT (City of Sac - 2012)

For Leasing Information, Please Contact:

Jason K. Gallelli
jgallelli@gtvoitco.com
Cal BRE License #01143594

Jeff T. Hagan
jhagan@gtvoitco.com
Cal BRE License #01494218

Kurt D. Conley
kconley@gtvoitco.com
Cal BRE License #01851169



Licensed as Real Estate Salespersons by the CA Bureau of Real Estate. The information contained herein has been obtained from sources we deem reliable. While we have no reason to doubt its accuracy, we do not guarantee it. ©2014 Voit Real Estate Services, Inc. All Rights Reserved. Real People, Real Solutions. ® is a registered trademark of Voit Real Estate Services.

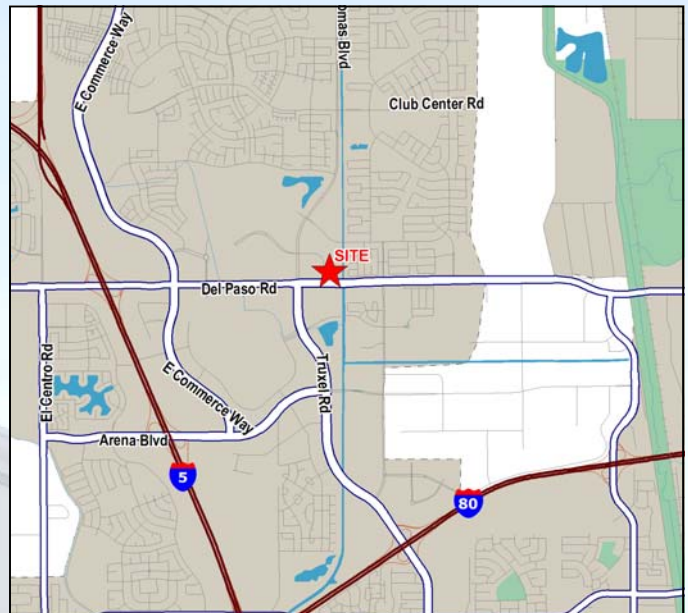
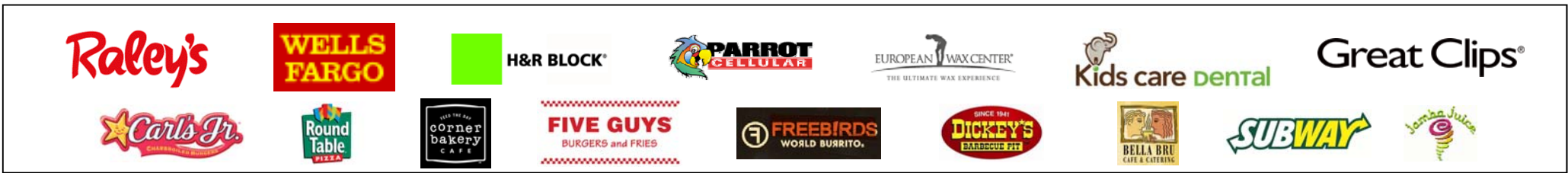


PARK PLACE - MARKET OVERVIEW

Park Place is located at the northeast corner of Natomas Boulevard and Del Paso Road in Sacramento and is located within minutes of Interstate 5 & Interstate 80.

National credit tenants in the immediate vicinity include Kohl's, California Backyard, Marshalls, Lane Bryant, Dress Barn, Pacific Dental and Leslie's Pool Supply. The community center is ideally located on the hard corner of the trade area's "main & main" intersection and consists of a total of ±108,358 square feet.

Park Place has strong restaurant and food tenants that include Five Guys Burgers & Fries, Round Table Pizza, Freebirds World Burrito, Jamba Juice, Bella Bru, Carl's Jr., Subway, Big Spoon Yogurt and Corner Bakery.



Demographics:

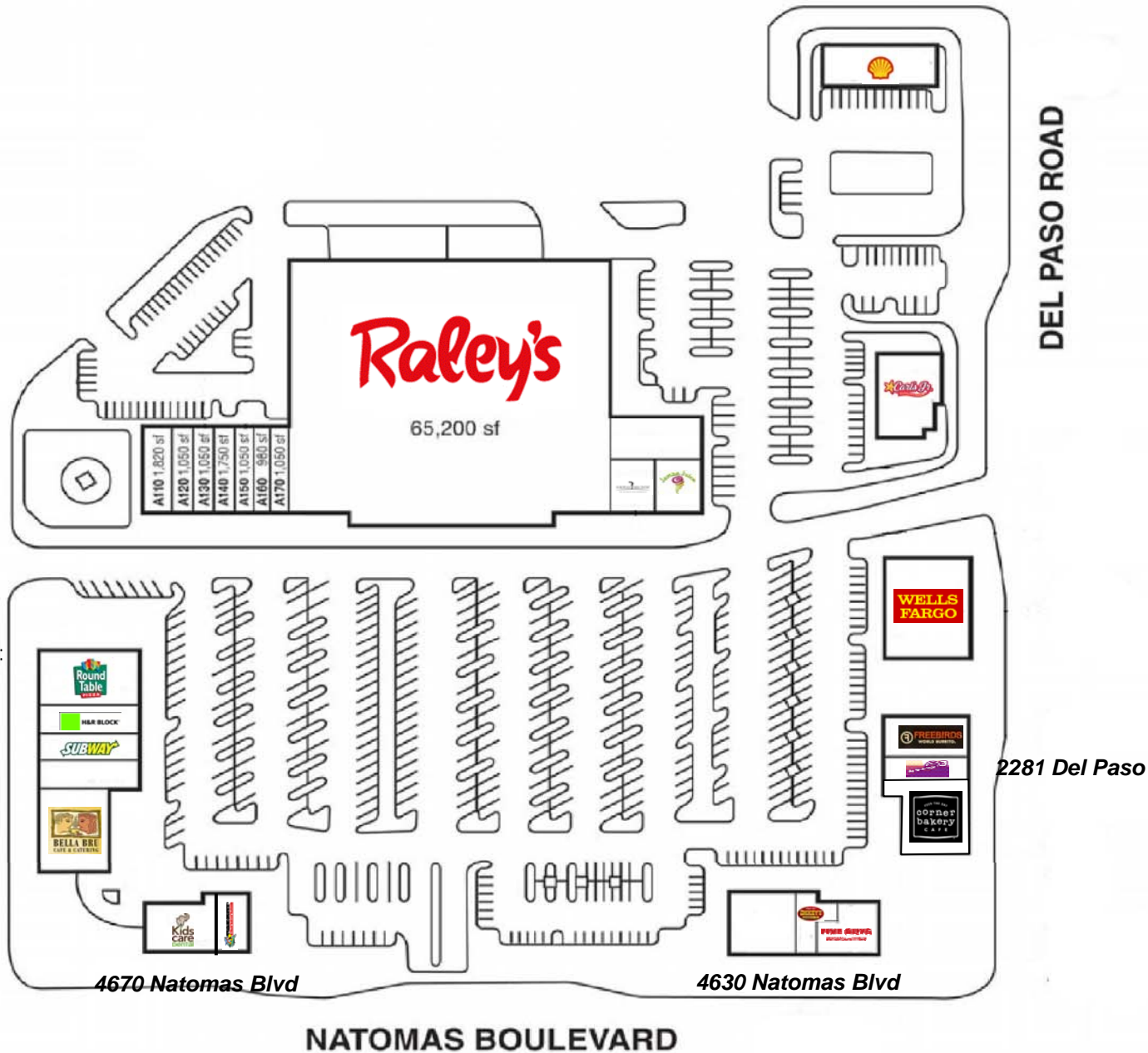
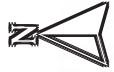
	<u>1 Mile</u>	<u>3 Mile</u>	<u>5 Mile</u>
2014 Total Population:	13,1967	90,862	186,788
2014 Total Households:	5,213	31,288	61,926
2014 Average Household Income:	\$89,426	\$80,900	\$71,207



Licensed as Real Estate Salespersons by the CA Bureau of Real Estate. The information contained herein has been obtained from sources we deem reliable. While we have no reason to doubt its accuracy, we do not guarantee it. ©2014 Voit Real Estate Services, Inc. All Rights Reserved. Real People, Real Solutions. ® is a registered trademark of Voit Real Estate Services.



PARK PLACE - SITE PLAN



For Leasing Information, Please Contact:

Jason K. Gallelli
 jgallelli@gtvoitco.com
 Cal BRE License #01143594

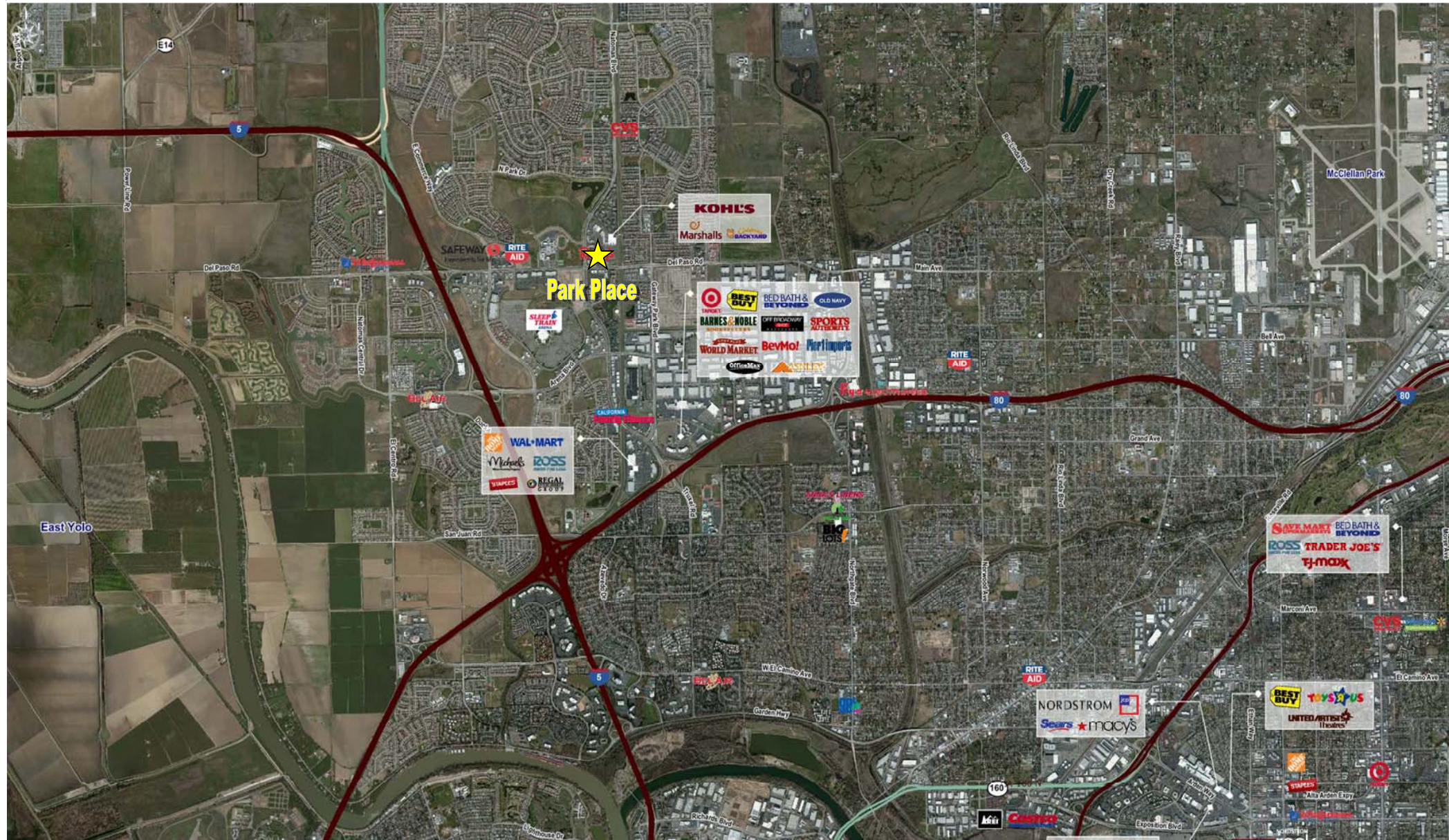
Jeff T. Hagan
 jhagan@gtvoitco.com
 Cal BRE License #01494218

Kurt D. Conley
 kconley@gtvoitco.com
 Cal BRE License #01851169

Licensed as Real Estate Salespersons by the CA Bureau of Real Estate. The information contained herein has been obtained from sources we deem reliable. While we have no reason to doubt its accuracy, we do not guarantee it. ©2014 Voit Real Estate Services, Inc. All Rights Reserved. Real People, Real Solutions. ® is a registered trademark of Voit Real Estate Services.



PARK PLACE - AERIAL



Jason K. Gallelli
 jgallelli@gtvoitco.com
 Cal BRE License #01143594

Jeff T. Hagan
 jhagan@gtvoitco.com
 Cal BRE License #01494218

Kurt D. Conley
 kconley@gtvoitco.com
 Cal BRE License #01851169

Licensed as Real Estate Salespersons by the CA Bureau of Real Estate. The information contained herein has been obtained from sources we deem reliable. While we have no reason to doubt its accuracy, we do not guarantee it. ©2014 Voit Real Estate Services, Inc. All Rights Reserved. Real People, Real Solutions. ® is a registered trademark of Voit Real Estate Services.

