

AVAILABLE FOR LEASE



1700 RUSSELL ROAD, PAOLI, PA 19301

- 13,683 Total RSF
- \$21.75 + Utilities + Janitorial
- Monument Signage Available
- Walkable to Daylesford Train Station
- Building Demises Easily

Suite A—6,840 RSF (Second Floor)
Suite B—3,420 RSF (Left of Entry)
Suite C—3,420 RSF (Right of Entry)

- Close Proximity to PA Route 30, PA Route 202, Interstate 76 and the Pennsylvania Turnpike.



For Information, Contact:

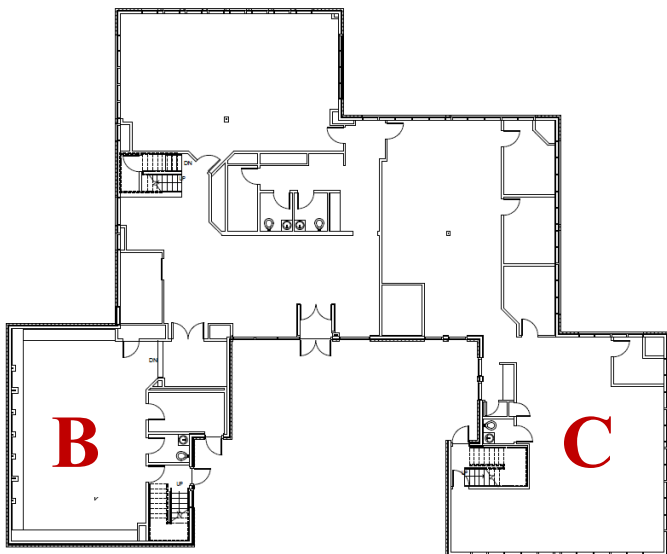
COLIN McHALE
cmchale@beaconcre.com

610.828.0100

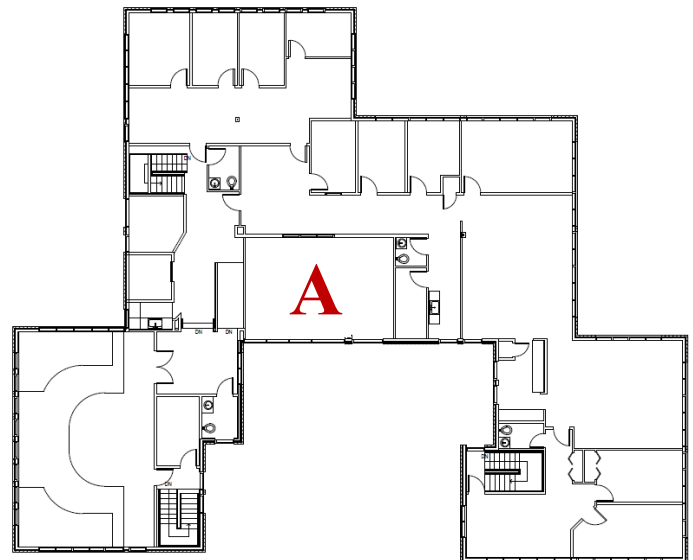
1700 RUSSELL ROAD, PAOLI, PA 19301



As Built Floor Plans



First Floor



Second Floor