

FOR LEASE | ±1,200 SF OF GROUND FLOOR

STREET FRONTAGE RETAIL | 1220 FRUITVALE AVENUE, OAKLAND, CA



John Dunning
Real Estate Associate

510-622-8435

john.dunning@tricommercial.com

LIC: #02024892

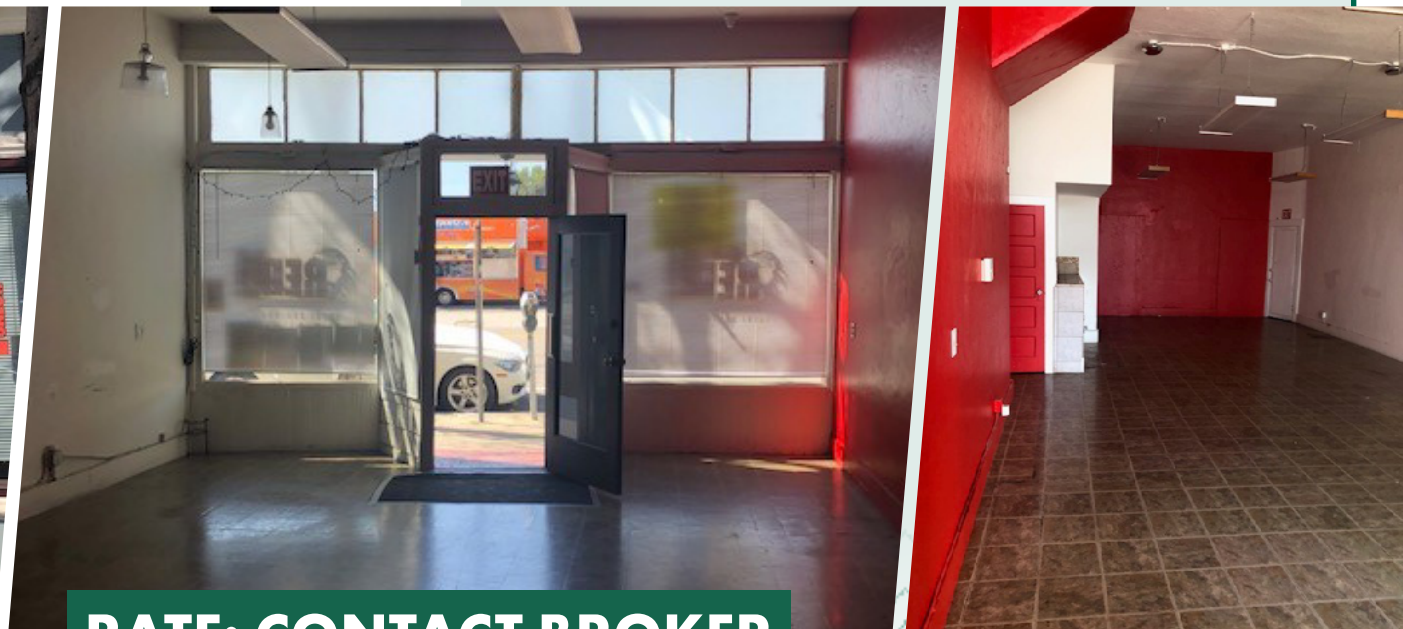
1220 FRUITVALE AVENUE

±1,200 SF - **GROUND FLOOR STREET RETAIL**
FOR LEASE IN FRUITVALE, OAKLAND

Terrific retail location with great visibility along Fruitvale Avenue and close proximity to Fruitvale BART, AC Transit and 880 FWY access as part of the thriving Fruitvale Shopping District.

- Excellent street frontage
- Large storefront windows
- High 16' Ceilings providing large volume of space

- Located in the Fruitvale Shopping District with its robust retail shopping, cafes, restaurants, markets and financial services
- Just off the 880 FWY exit and entry, with the Fruitvale BART a block away and AC Transit HUB



RATE: CONTACT BROKER

Become a part of the vibrant Fruitvale Business District! Contact:

John Dunning

510-622-8435

john.dunning@tricommercial.com

LIC: #02024892



www.tricommercial.com

1220 FRUITVALE AVENUE

±1,200 SF - GROUND FLOOR STREET RETAIL
FOR LEASE IN FRUITVALE, OAKLAND



Become a part of the vibrant
Fruitvale Business District! Contact:

John Dunning

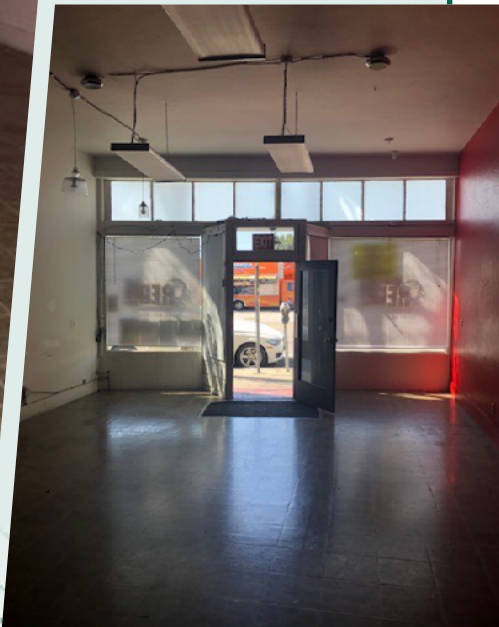
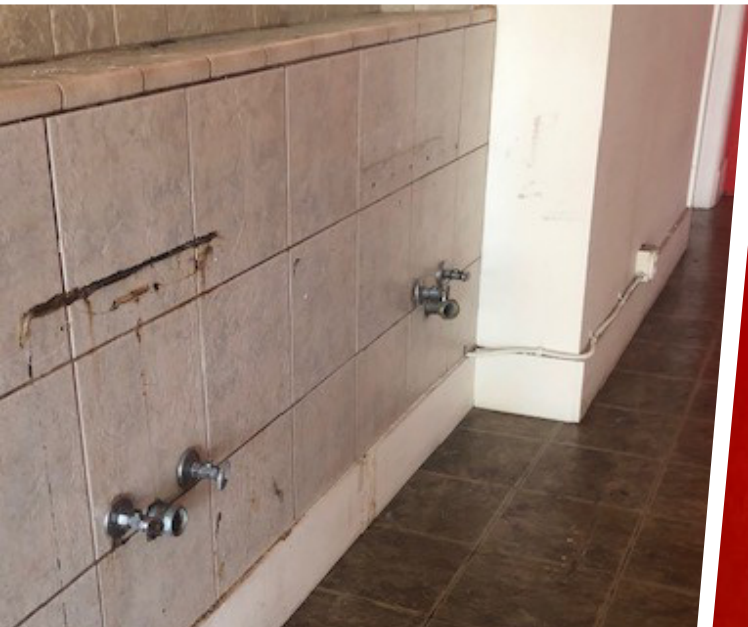
510-622-8435

john.dunning@tricommercial.com

LIC: #02024892



www.tricommercial.com



Become a part of the vibrant
Fruitvale Business District! Contact:

RATE: CONTACT BROKER

John Dunning

510-622-8435

john.dunning@tricommercial.com

LIC: #02024892



www.tricommercial.com