

26070 TOWN CENTRE DRIVE

FOOTHILL RANCH | CALIFORNIA



**FOR
LEASE**

IMMEDIATE ACCESS TO MASTER PLANNED BAKER RANCH

 **LEE &
ASSOCIATES**
COMMERCIAL REAL ESTATE SERVICES

ERIC DARNELL
Vice President
CalBRE 01888743
949.790.3157
edarnell@leeirvine.com



26070

TOWN CENTRE OFFICE PARK
FOOTHILL RANCH, CALIFORNIA

FEATURES

- 1,515 SF office space
- Single-story office building
- Turn key office build-out
- High end, newer office construction
- Excellent glass line
- Surface free parking (4:1)
- Near numerous retail amenities
- Immediate access to the 5, 405 and 241 Freeways via new Alton Parkway extension
- Surrounded by new Baker Ranch development
- Available now
- Call to show



Interior



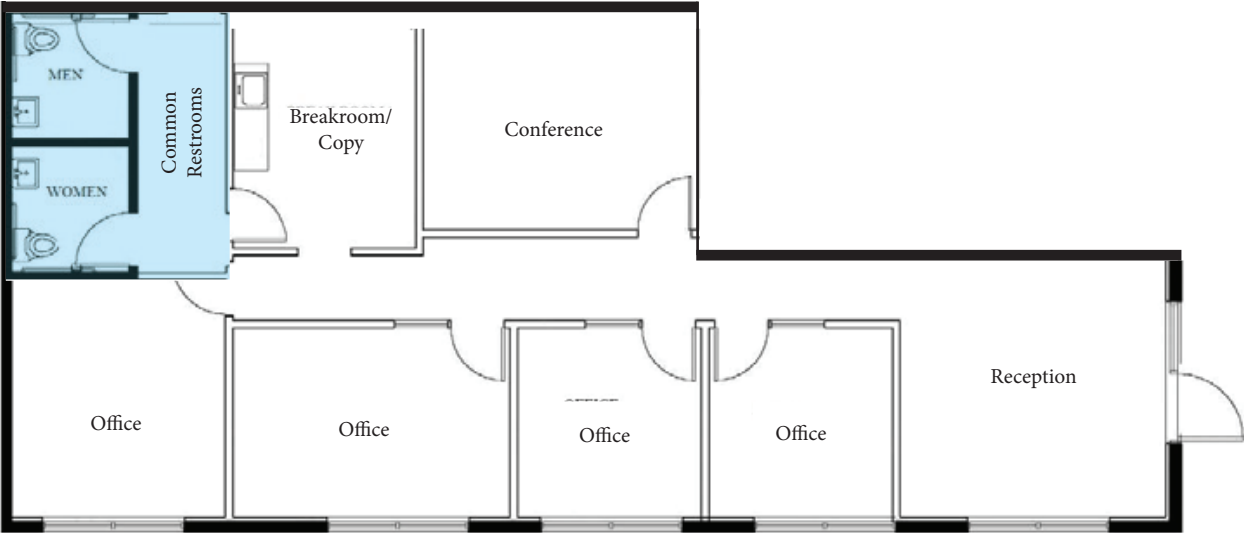
Exterior



Break Room

**Asking \$2.25 Full
Service Gross**

FLOOR PLAN





26070 TOWN CENTRE DRIVE

FOOTHILL RANCH | CALIFORNIA



For more information, contact:

ERIC DARNELL
Vice President
CalBRE 01888743
949.790.3157
edarnell@leeirvine.com