



**MAM
COMMERCIAL**
A MEDICAL ASSET MANAGEMENT COMPANY



Skypark Atrium | 2790 Skypark Drive | Torrance, CA Office Suites For Lease

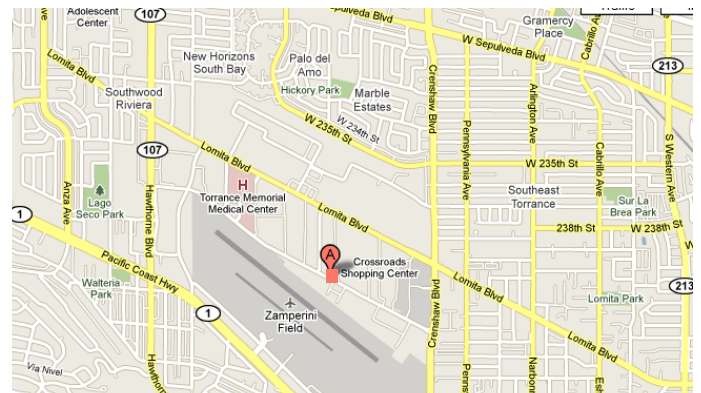
Available Suites	Rentable SF	Rental Rates
Suite 103/104	3,022	\$2.40 FSG
Suite 115*	2,163	\$2.40 FSG
Suite 116*	3,519	\$2.40 FSG
Suite 210	5,123	\$2.40 FSG

Features

- Beautiful courtyard and fountain
- Professionally managed with ample parking
- Minutes away from Palos Verdes Peninsula
- Adjacent to South End Racquet and Health Club

Term 3 to 10 year

* Contiguous to 5,682 RSF



Contact

Erik Van't Hof
(310) 308-3628
erikv@medicalasset.com
CalBRE: 01055014

Jeffrey D. Cunningham
(310) 517-4860
jeffc@medicalasset.com
CalBRE: 01363877

www.medicalasset.com

South Bay
2790 Skypark Dr., Ste. 207 | Torrance CA 90505
Phone: (310) 530-6060 | Fax: (310) 530-6187

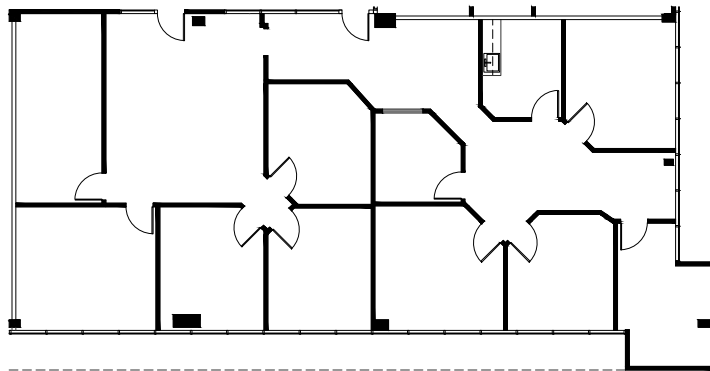
Downtown Los Angeles
1400 S. Grand Ave., Ste. 808 | Los Angeles CA 90015
Phone: (213) 748-1355 | Fax: (213) 748-7729

San Fernando Valley
4910 Van Nuys Blvd., Ste. 209 | Sherman Oaks, CA 91403
Phone: (818) 990-5200 | Fax: (818) 990-5202



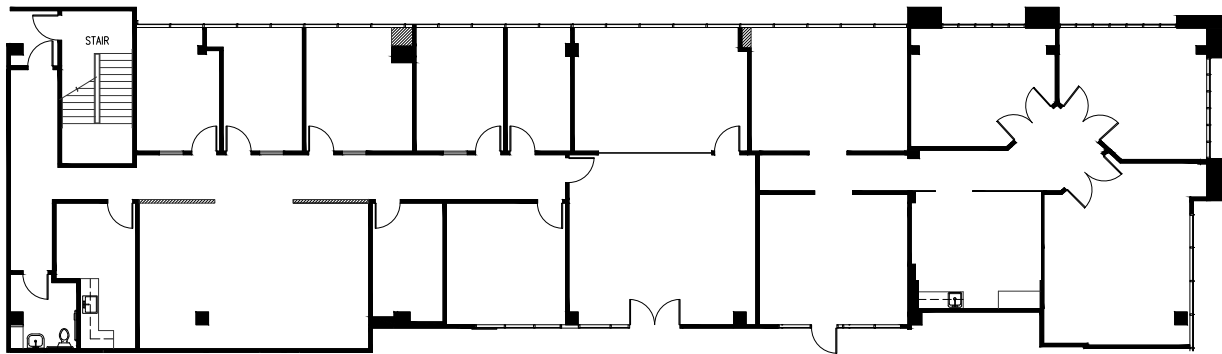
2790 Skypark Drive Availability and Floorplans

Suite 103/104
3,022 RSF



Suite 115
2,163 RSF

Suite 116
3,519 RSF



Suite 210
5,123 RSF

