

# FOR LEASE

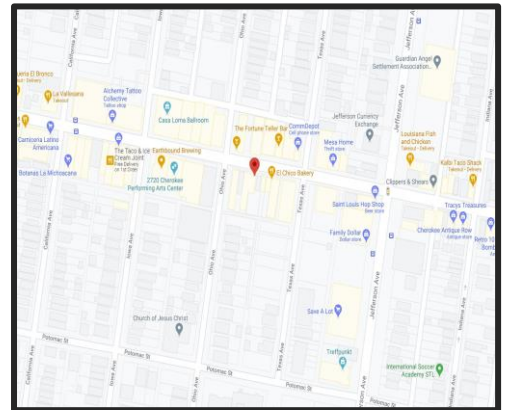
Cherokee Street Commercial Space



**\$14.00/S.F. M.G. | 1,200 SQUARE FEET**

**2640-42 Cherokee Street  
St. Louis, MO 63118**

- Former Café Space
- Double Store Front Facing Cherokee
- Potential to be split into Two Separate Spaces



*For more information on this property, please contact:*

**Mark Clarkson | (314) 647-6611 x127 | [MClarkson@ManorRealEstate.com](mailto:MClarkson@ManorRealEstate.com)**

**Caleb Anthonis | (314) 647-6611 x126 | [Caleb@ManorRealEstate.com](mailto:Caleb@ManorRealEstate.com)**

**ManorRealEstate.com**

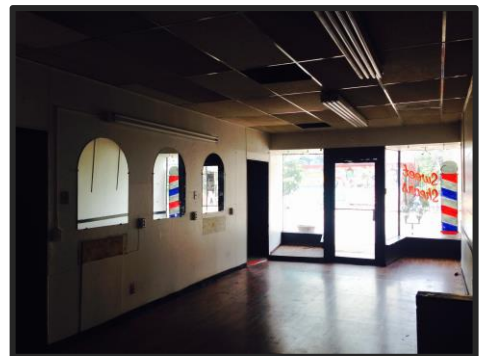
# FOR LEASE

Cherokee Street Commercial Space



**\$14.00/S.F. M.G. | 1,200 SQUARE FEET**

- Rear Access to Alley for Loading/Unloading
- Parking Available for Additional Fee
- Ideal for Small Café, Restaurant, Gallery or Retail
- Hardwood Floors Throughout
- Turn-Key Finishes
- Located in the heart of the [Cherokee Street District](#)



*For more information on this property, please contact:*

**Mark Clarkson | (314) 647-6611 x127 | [MClarkson@ManorRealEstate.com](mailto:MClarkson@ManorRealEstate.com)**

**Caleb Anthonis | (314) 647-6611 x126 | [Caleb@ManorRealEstate.com](mailto:Caleb@ManorRealEstate.com)**