



219 W. Ninth Street | Wilmington, DE

Property Description

Join Artisan's Bank and Diamond Technologies

- 3 story professional office building in the CBD
- Zoning C4 Office
- Energy Efficient / roof top solar panels
- Lower level secured storage available

Available Space

- 3rd Floor (Available 12/1/2017)
+/-9,766 rsf
- Newly Renovated 1st floor Office or Retail
+/-3,255 rsf

Pricing: \$15.00/sf,
net of electric and janitorial

Edd Connor

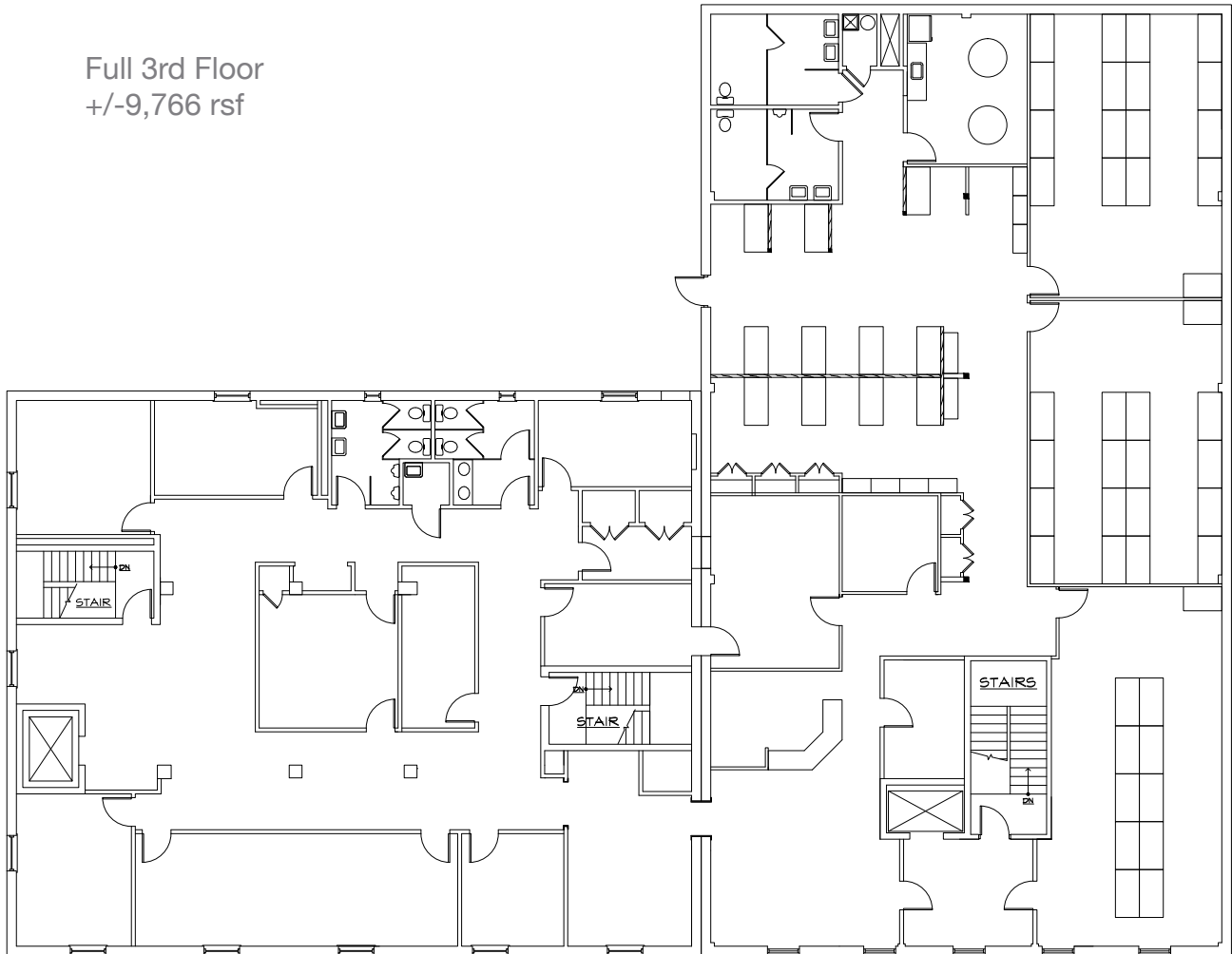
+1 302 322 9500
EddConnor@emoryhill.com

10 Corporate Circle, Suite 100
New Castle, DE 19720
+1 302 322 9500

www.emoryhill.com

219 W. 9th Street
Wilmington, Delaware
3rd Floor - Floor Plan

Full 3rd Floor
+/-9,766 rsf



Edd Connor

+1 302 322 9500

EddConnor@emoryhill.com

10 Corporate Circle | Suite 100 | New Castle, DE 19720 +1 302 322 9500 www.emoryhill.com

219 W. 9th Street
Wilmington, Delaware
1st Floor - Floor Plan

1st Floor
+/-3,255 rsf
Retail / Office



Edd Connor

+1 302 322 9500

EddConnor@emoryhill.com

10 Corporate Circle | Suite 100 | New Castle, DE 19720 +1 302 322 9500 www.emoryhill.com

NO WARRANTY OR REPRESENTATION, EXPRESS OR IMPLIED, IS MADE AS TO THE ACCURACY OF THE INFORMATION CONTAINED HEREIN, AND THE SAME IS SUBMITTED SUBJECT TO ERRORS, OMISSIONS, CHANGE OF PRICE, RENTAL OR OTHER CONDITIONS, PRIOR SALE, LEASE OR FINANCING, OR WITHDRAWAL WITHOUT NOTICE, AND OF ANY SPECIAL LISTING CONDITIONS IMPOSED BY OUR PRINCIPALS NO WARRANTIES OR REPRESENTATIONS ARE MADE AS TO THE CONDITION OF THE PROPERTY OR ANY HAZARDS CONTAINED THEREIN ARE ANY TO BE IMPLIED.

219 W. 9th Street
Wilmington, Delaware
Aerials

NAI Emory Hill
Commercial Real Estate Services. Worldwide.



Edd Connor

+1 302 322 9500

EddConnor@emoryhill.com

10 Corporate Circle | Suite 100 | New Castle, DE 19720 +1 302 322 9500 www.emoryhill.com

NO WARRANTY OR REPRESENTATION, EXPRESS OR IMPLIED, IS MADE AS TO THE ACCURACY OF THE INFORMATION CONTAINED HEREIN, AND THE SAME IS SUBMITTED SUBJECT TO ERRORS, OMISSIONS, CHANGE OF PRICE, RENTAL OR OTHER CONDITIONS, PRIOR SALE, LEASE OR FINANCING, OR WITHDRAWAL WITHOUT NOTICE, AND OF ANY SPECIAL LISTING CONDITIONS IMPOSED BY OUR PRINCIPALS NO WARRANTIES OR REPRESENTATIONS ARE MADE AS TO THE CONDITION OF THE PROPERTY OR ANY HAZARDS CONTAINED THEREIN ARE ANY TO BE IMPLIED.

219 W. 9th Street
Wilmington, Delaware
Aerials

NAI Emory Hill
Commercial Real Estate Services. Worldwide.



Edd Connor

+1 302 322 9500

EddConnor@emoryhill.com