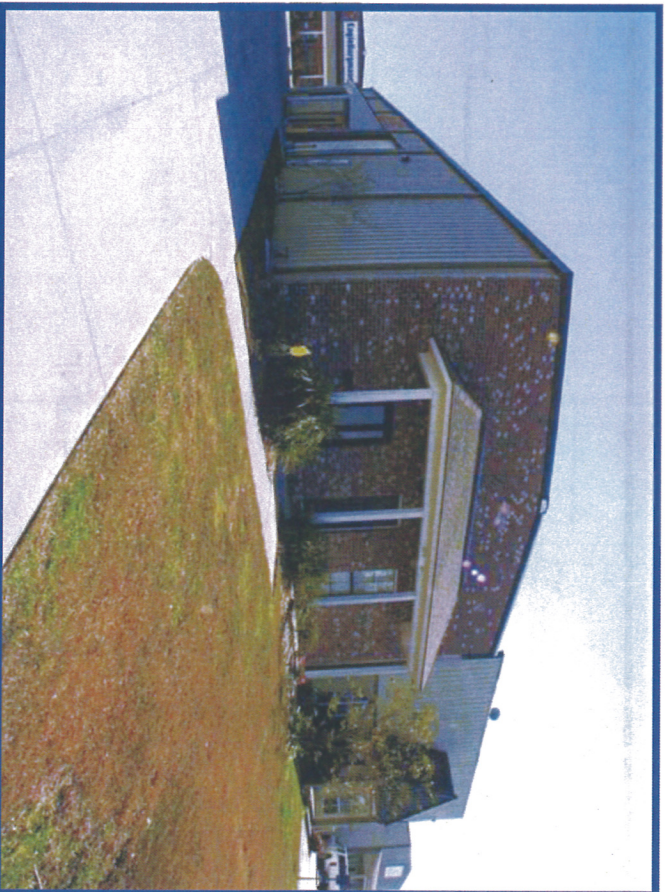


OFFICE / WAREHOUSE FOR LEASE



6215 Hollyfield Dr, Ste. "B", Baton Rouge, LA

- Office/Warehouse space available in Industripark
- Suite consists of a 1,390 SF Warehouse accompanied by a 710 SF Office
- Zoned C-2
- Contact agent for more information



Building Size: 2,029 SF
Retail/Office: 710 SF
Warehouse: 1,390 SF
Lease Price: \$1,990 Monthly
Unit Price: \$11.77/SF

FOR MORE INFORMATION CONTACT:

Grey Hammett - 225-778-5858
225-293-5662 (direct)

grey@mface.com
www.mface.com

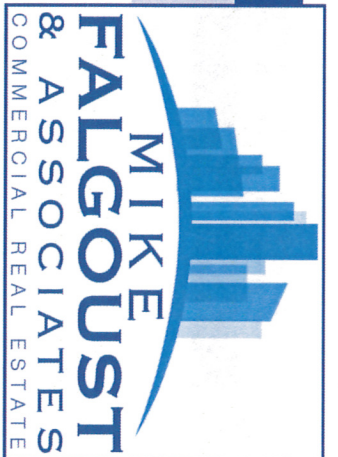
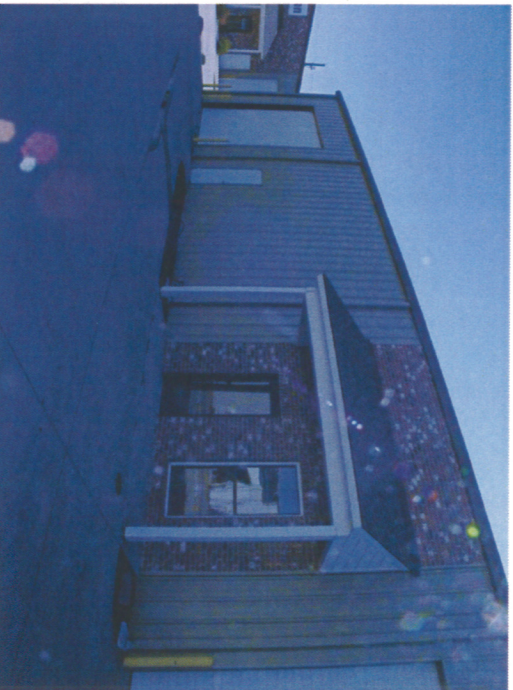
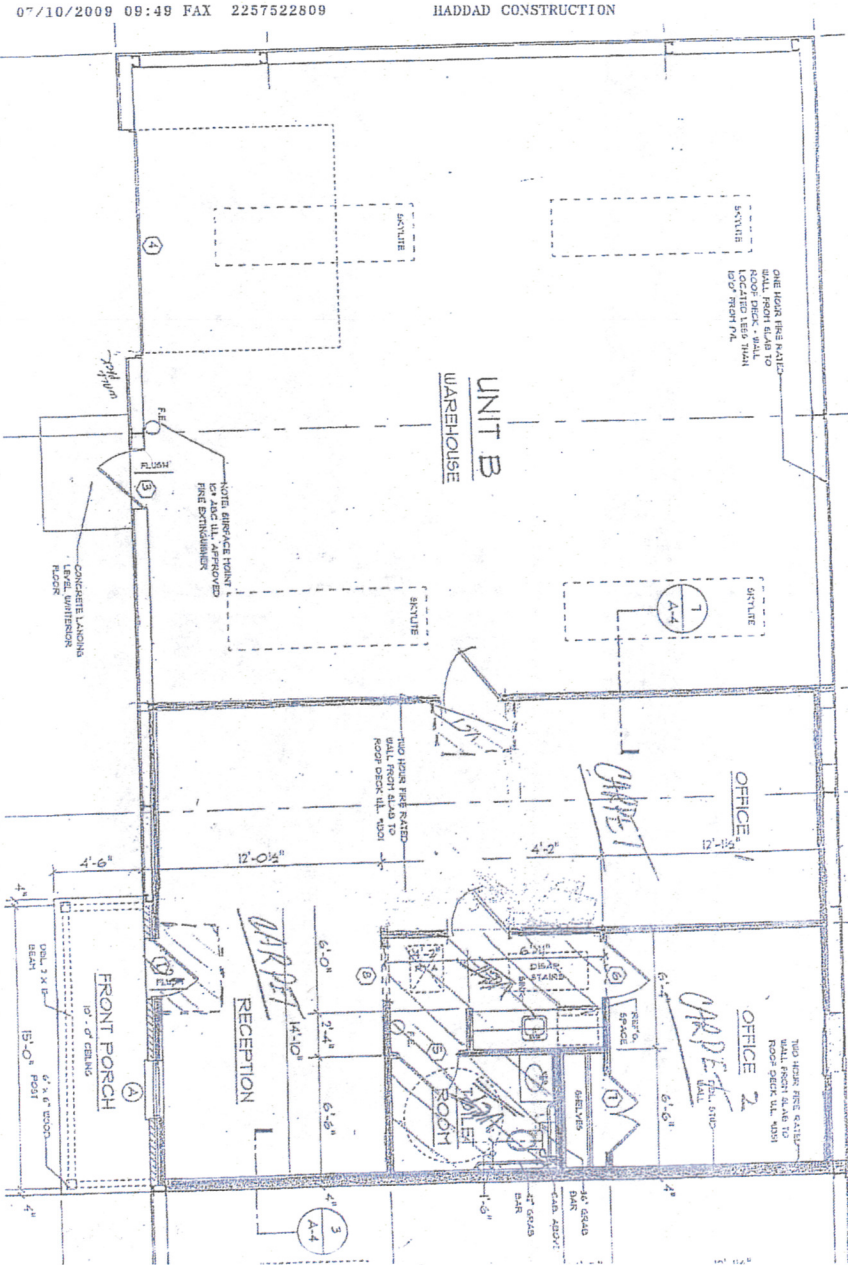
MIKE FALGOUST & ASSOCIATES, LLC • 10202 JEFFERSON HWY., BLDG. C • BATON ROUGE, LA 70809 • 225-778-5858 • FAX 225-300-8081

All information herein is believed to be accurate, but is not warranted and no liability of errors or omissions is assumed by either the property owner or Mike Falgoust & Associates, LLC and/or its agents and employees. Prices as stated herein and property availability are subject to change and/or sale or lease without prior notice, and all sizes and dimensions are subject to correction. Created 6/21/2017

Office/Warehouse For Lease

6215 Hollyfield Dr. Building 1, Suite B, Baton Rouge, LA
Baton Rouge, LA

LINCARE
6215 HOLLYFIELD



MIKE FALGOUST & ASSOCIATES, LLC • 10202 JEFFERSON HWY., BLDG. C • BATON ROUGE, LA 70809 • 225-778-5858 • FAX 225-300-8081

All information herein is believed to be accurate, but is not warranted and no liability of errors or omissions is assumed by either the property owner or Mike Falgoust & Associates, LLC and/or its agents and employees. Prices as stated herein and property availability is subject to change and/or sale or lease without prior notice, and all sizes and dimensions are subject to correction.