

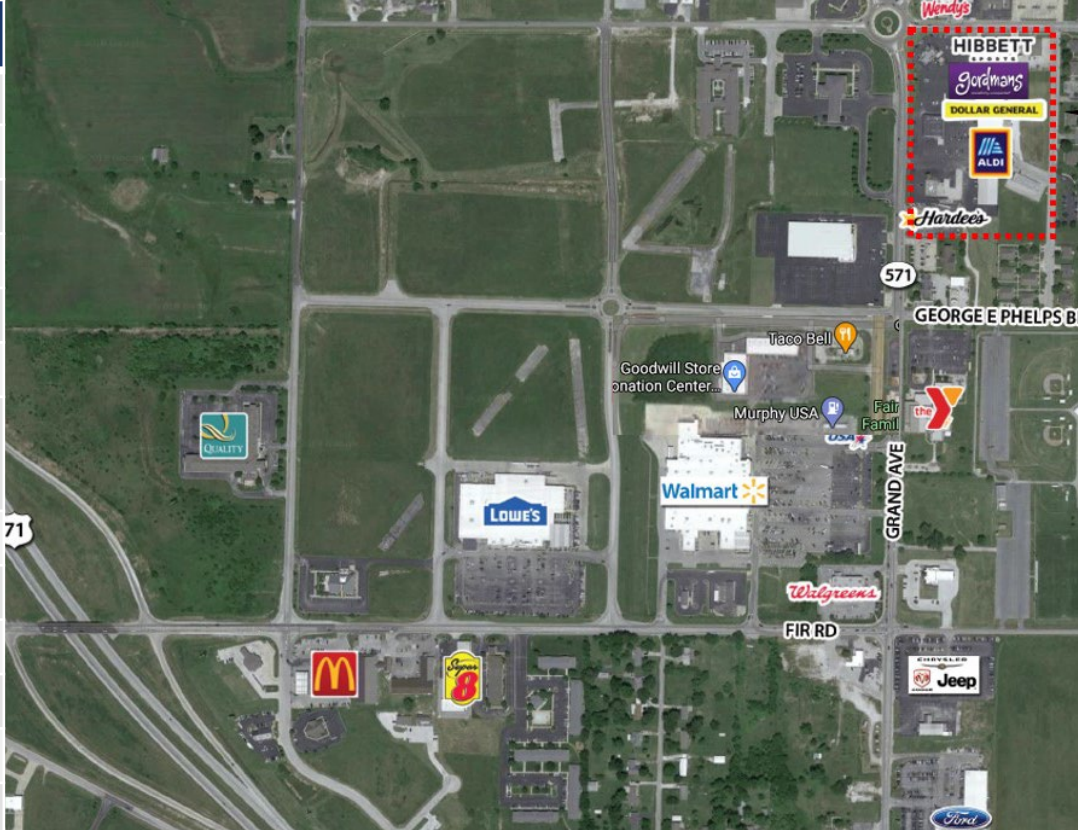
Carthage Village

Carthage, MO



Jordan Gorjian
Director of Leasing
jordan@gorjianacq.com | gorjianacq.com
516.858.0238
Follow me on [LinkedIn](#) | [Listings](#)

PROPERTY DESCRIPTION	
Address	2432 Grand Avenue, Carthage, MO 64836
Property Type	Retail
Lot Size	6.4 Acres
Building Size	71,000 SF
Space Available	3,000 SF - 14,000 SF
Drive-Thru Possibility	No
Nearby Retailers	Walmart, Lowe's, Walgreens, Aldi, Hardee's, Little Caesars, Hallmark, Metro PCS, and more
Vehicles Per Day	13,095
Comments	Former Goody's space
	Main retail trade area of Carthage
	Pylon signage available
	Walking distance to Walmart and Lowe's



DEMOGRAPHICS			
	1 Mile Radius	3 Mile Radius	5 Mile Radius
Population	3,608	17,515	22,046
Households	1,499	6,333	7,990
Median Household Income	\$66,762	\$58,716	\$61,972
Median Home Value	\$176,786	\$137,326	\$144,378
Establishments	108	491	548
Employees	2,021	8,988	10,035
Race/Ethnicity: White	88%	81%	83%
Race/Ethnicity: Black/African American	1%	2%	1%

