



# OFFICE/RETAIL SPACE FOR LEASE

## 127 MAIN STREET ROSELLE, IL



### BUILDING FEATURES:

- 4,595 SF Available Immediately For Lease
- Free Standing Office/retail/Showroom Space
- Excellent Visibility & building signage available
- 24 hour access w/ private entrance & restrooms
- Tenant Controlled HVAC
- Walking distance to Roselle Train Station
- Landlord will customize the space to tenant specs
- Ideal for office users, financial services, Non-profits, flex retail/office or showroom
- High Speed Internet! TV Available via Comcast
- Operable Windows
- Located adjacent to several newer multi-story retail/residential redevelopments
- **Rental Rate: \$15.75 PSF**

### AVAILABLE SPACE

Building	Size (SF)
127	4,595 SF

### FOR MORE INFORMATION:

RANDY OLCZYK  
Direct: 847.246.9611  
randy@chicagolandcommercial.com

RAY OKIGAWA  
Direct: 847.246.9632  
ray@chicagolandcommercial.com



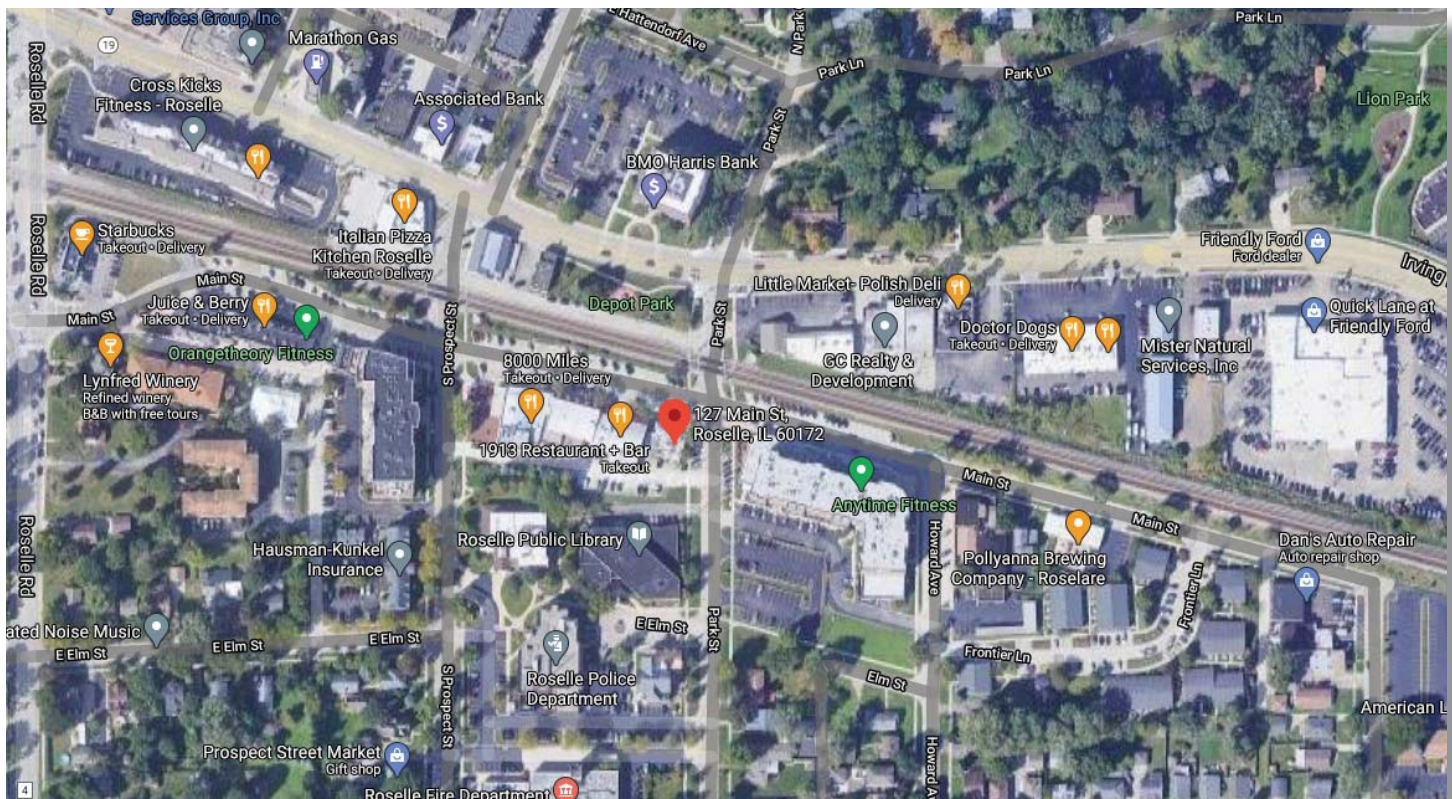
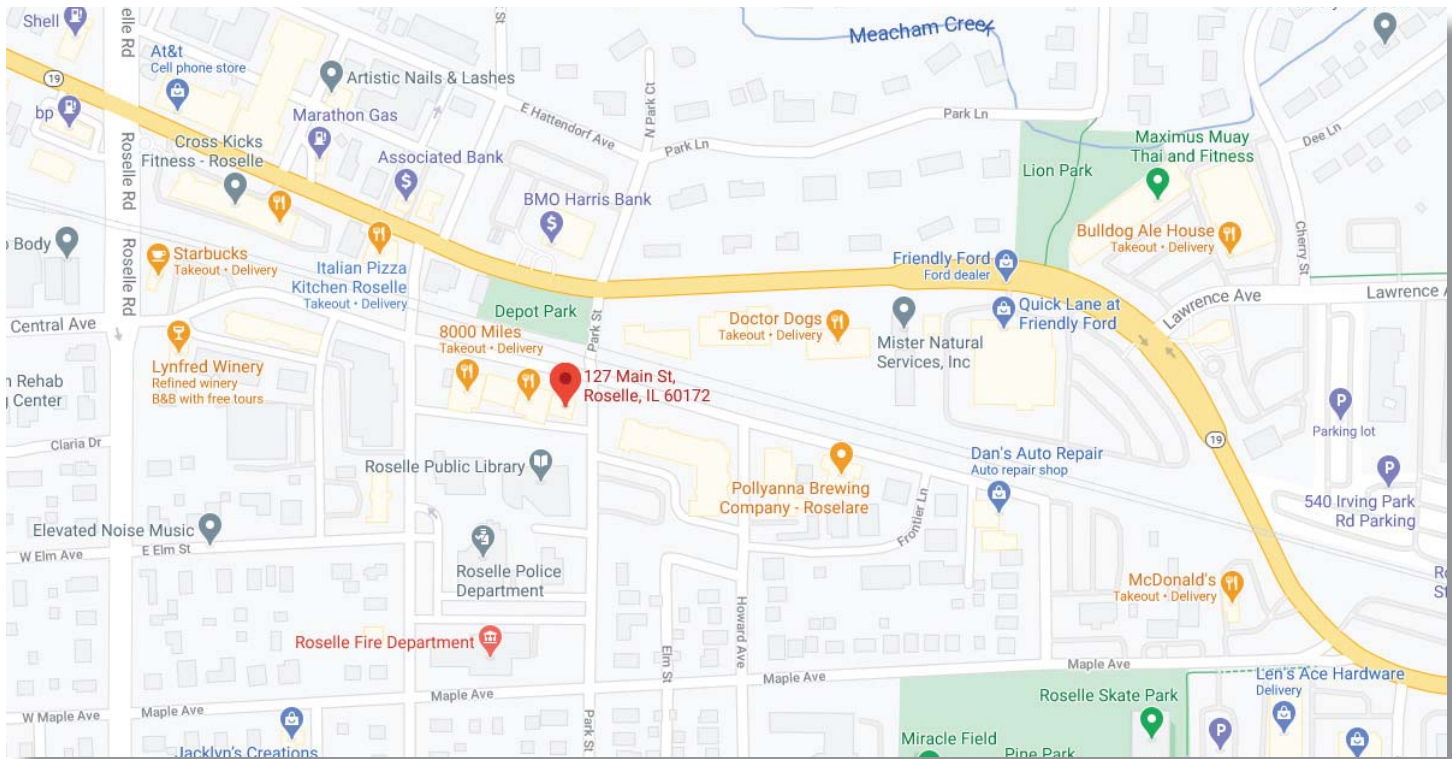
4811 Emerson Ave Suite 112, Palatine, IL



# OFFICE/RETAIL SPACE FOR LEASE

## 127 MAIN STREET ROSELLE, IL

### Area Maps





# OFFICE/RETAIL SPACE FOR LEASE 127 MAIN STREET ROSELLE, IL

INTERIOR PHOTOS:



## FOR MORE INFORMATION:

RANDY OLCZYK  
Direct: 847.246.9611  
randy@chicagolandcommercial.com

RAY OKIGAWA  
Direct: 847.246.9632  
ray@chicagolandcommercial.com



4811 Emerson Ave Suite 112, Palatine, IL

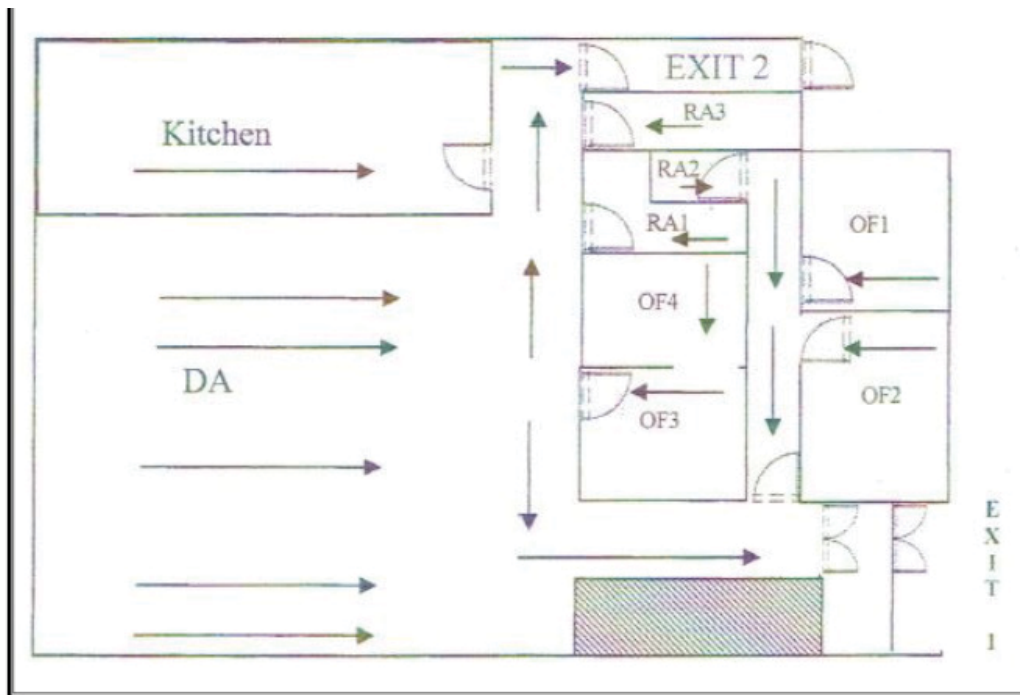


# OFFICE/RETAIL SPACE FOR LEASE

127 MAIN STREET ROSELLE, IL

## FLOORPLAN LAYOUT:

A



*Floor Plans- Ground Floor*

**4,595 SF**

### FOR MORE INFORMATION:

RANDY OLCZYK  
Direct: 847.246.9611  
randy@chicagolandcommercial.com

RAY OKIGAWA  
Direct: 847.246.9632  
ray@chicagolandcommercial.com



4811 Emerson Ave Suite 112, Palatine, IL