

FOR LEASE

# INDUSTRIAL BUILDING

6601

**TRIBUTARY STREET**

Baltimore, MD 21224



## AVAILABLE SPACE FEATURES

- + 13,923 SF
- + 1,500 SF Office
- + 21' - 22' Ceiling Height
- + 600 Amps 277/480 3 Phase Power
- + 2 Docks, 1 Drive-in
- + Wet Sprinkler
- + 0.45± Acre Fenced Yard
- + Conditioned Warehouse
- + Located in an Enterprise Zone
- + Zoned I-2



## CONTACT US

### JUSTIN MOHLER

Senior Vice President  
+1 410 244 3116  
justin.mohler@cbre.com

### JON CASELLA

Senior Vice President  
+1 410 244 3127  
jon.casella@cbre.com

### THOMAS GALVIN

Associate  
+1 410 244 3115  
thomas.galvin@cbre.com

### CBRE, INC.

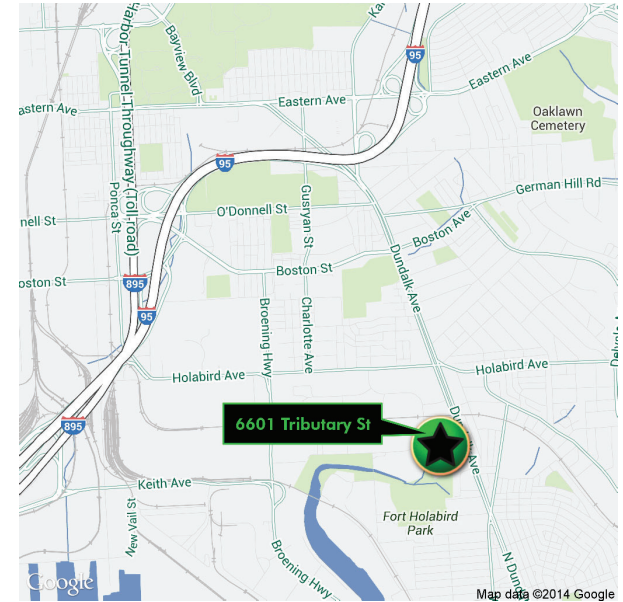
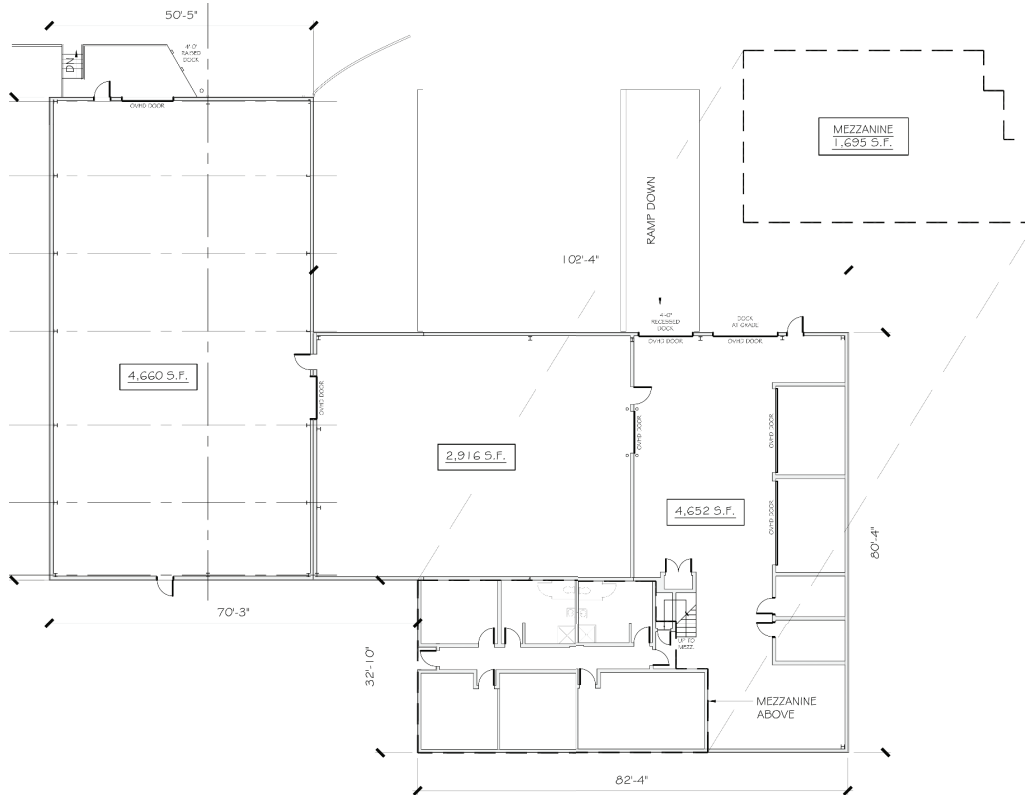
100 E Pratt St, Suite 1700  
Baltimore, MD 21202  
+1 410 244 7100

[www.cbre.com/baltimore](http://www.cbre.com/baltimore)

**CBRE**

# FOR LEASE INDUSTRIAL BUILDING

6601 TRIBUTARY STREET  
BALTIMORE, MD 21224  
Baltimore City



## TRAVEL DISTANCES

- I-95 ..... 1.5 miles
- I-895 ..... 1.5 miles
- Port of Baltimore..... 2.0 miles
- US Route 40 ..... 3.3 miles
- I-695 ..... 3.5 miles
- US Route 1 ..... 6 miles
- BWI Airport ..... 14 miles

© 2020 CBRE Inc. CBRE and the CBRE logo are service marks of CBRE Inc. and/or its affiliated or related companies in the United States and other countries. We obtained the information herein from sources we believe to be reliable. However, we have not verified its accuracy and make no guarantee, warranty or representation about it. It is submitted subject to the possibility of errors, omissions, change of price, rent or other conditions, prior sale, lease or financing or withdrawal without notice. We include projections, opinions, assumptions, estimates, for example only, and they may not represent current or future performance of the property. You and your tax and legal advisors should conduct your own investigation of the property and transaction. Photos herein are the property of their respective owners and use of these images without the express written consent of the owner is prohibited.

[www.cbre.com/baltimore](http://www.cbre.com/baltimore)

