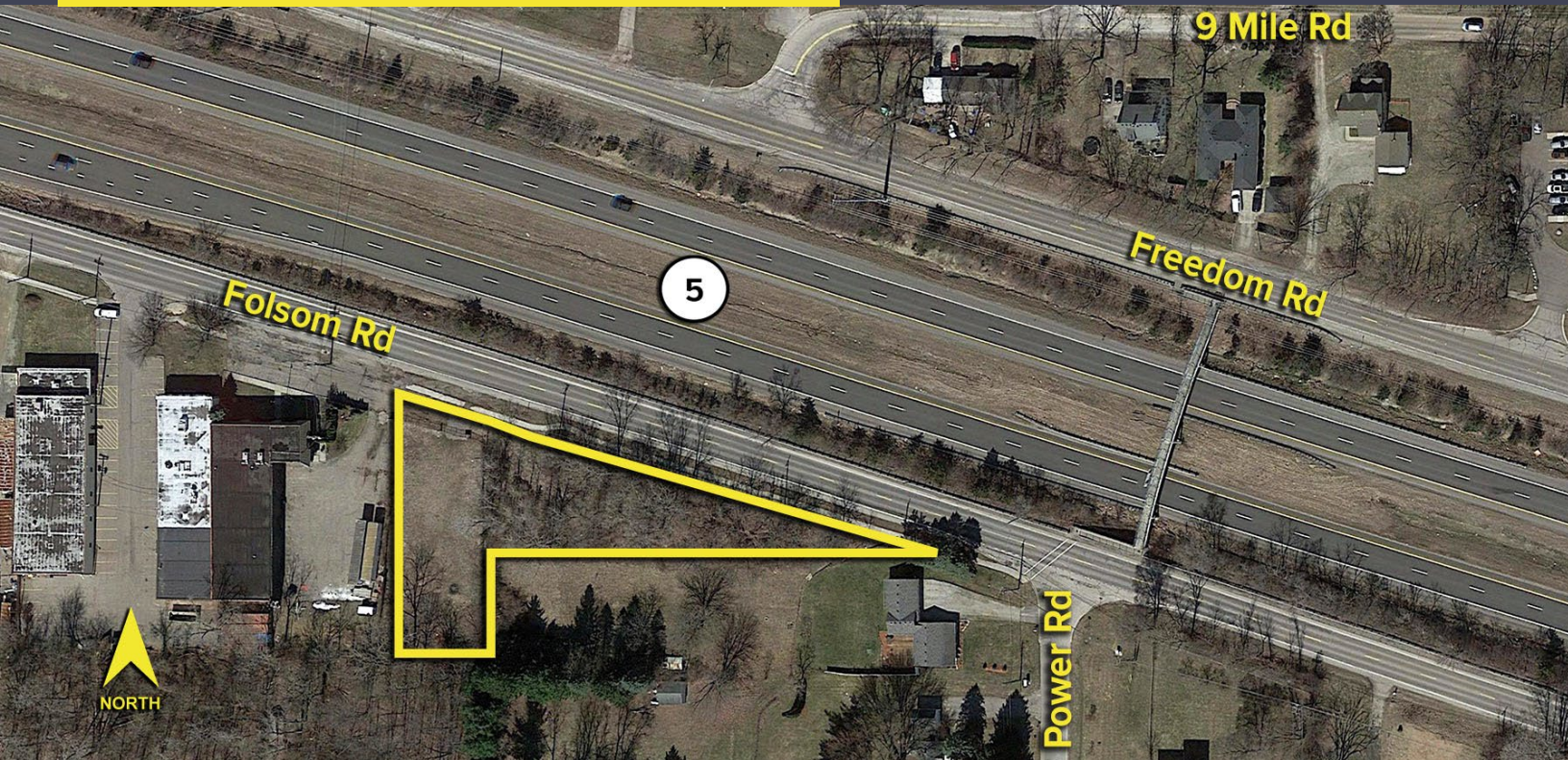


FOLSOM ROAD FARMINGTON HILLS, MICHIGAN

LAND FOR SALE
0.90 Acre Available



**SIGNATURE
ASSOCIATES**
KNOW SIGNATURE | KNOW RESULTS



PROPERTY FEATURES

- 0.90 acre available
- Zoned light industrial
- Partially cleared and balanced with road
- Located on the northeast corner of Folsom Road and Power Road
- Immediate access to M-5 eastbound entrance
- City water and electricity on site
- Asking price: \$150,000.00



For more information, please contact:

CHRISTOPHER M. D'ANGELO
(248) 948 0109
cdangelo@signatureassociates.com

JEFF LEMANSKI
(248) 359 0641
jlemanski@signatureassociates.com

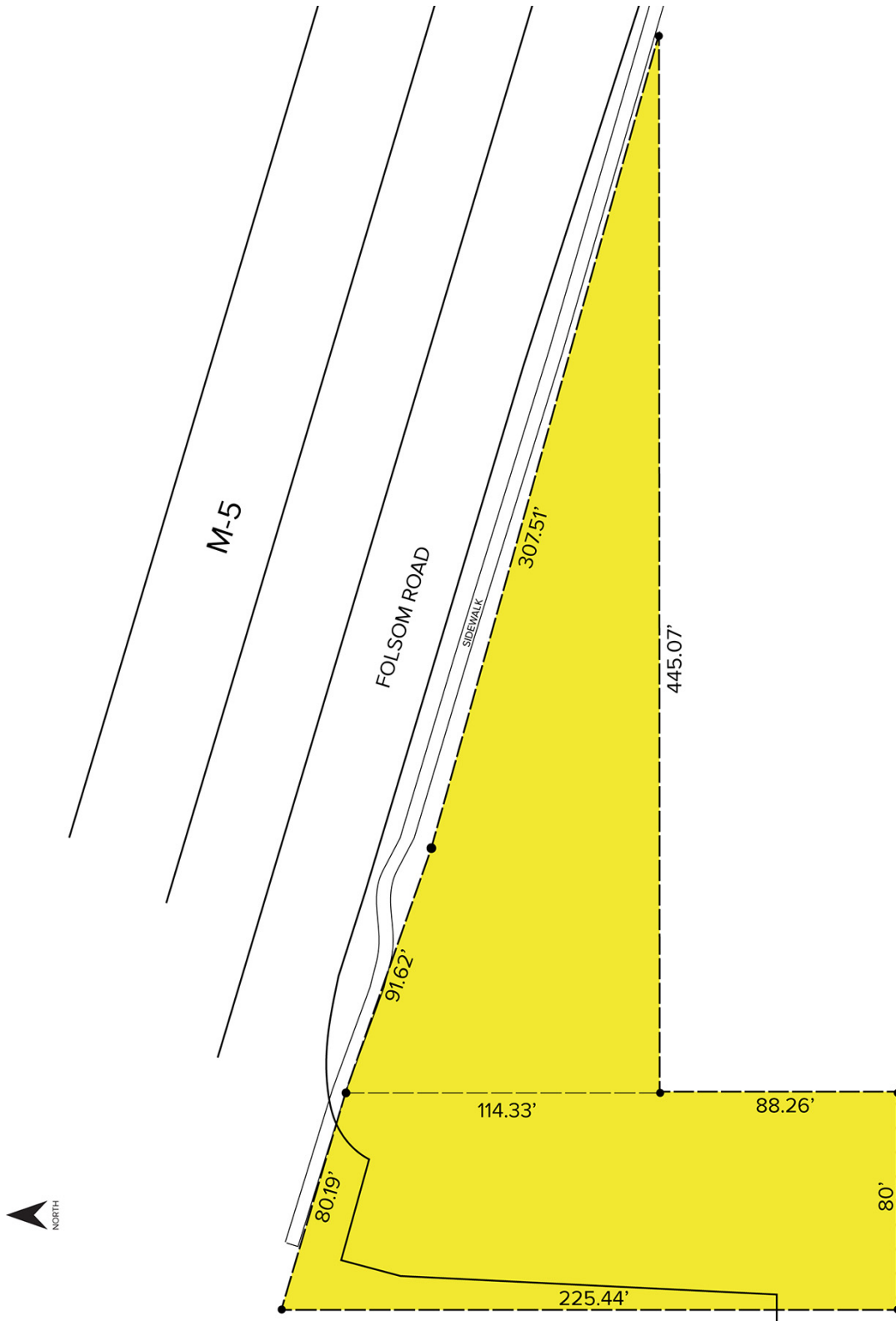
SIGNATURE ASSOCIATES
One Towne Square, Suite 1200
Southfield, MI 48076
www.signatureassociates.com

Folsom Road – Farmington Hills, Michigan

Land For Sale

0.90
Acre
AVAILABLE

Site Plan



For more information, please contact:

CHRISTOPHER M. D'ANGELO
(248) 948 0109
cdangelo@signatureassociates.com

JEFF LEMANSKI
(248) 359 0641
jlemanski@signatureassociates.com

SIGNATURE ASSOCIATES
One Towne Square, Suite 1200
Southfield, MI 48076
www.signatureassociates.com