

Kent 228

22643 83rd Avenue South
Building D, Suite B
Kent, WA

Approx 3,325 SF total

1,726 SF office

24' clear height

Close to SR-167 for
excellent access

Well maintained park

Fantastic exposure and visibility

1 grade-level loading door

M-3 zoning

\$0.45 shell / \$0.75 office



Location



Contact

Christopher J. Corr, SIOR

206.248.7324

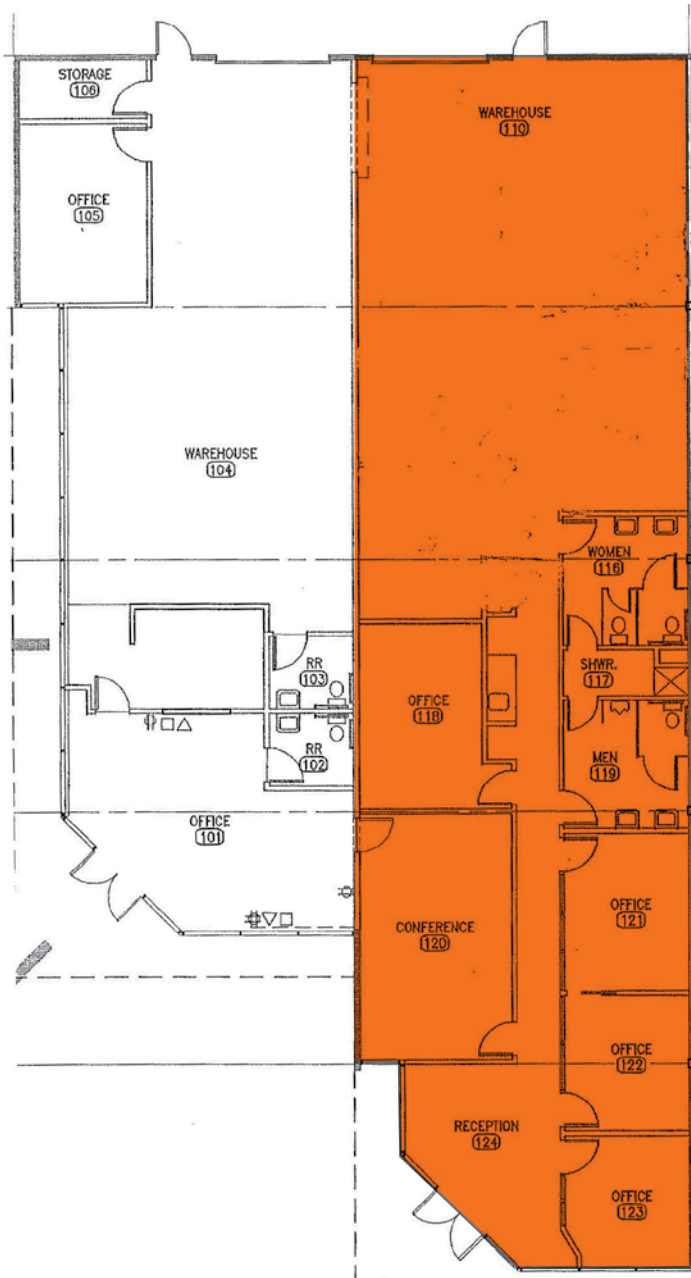
ccorr@kiddermathews.com

Matt Wood, SIOR

206.248.7306

mwood@kiddermathews.com

Kent 228 - Building D, Suite B



Contact

Christopher J. Corr, SIOR
206.248.7324
ccorr@kiddermathews.com

Matt Wood, SIOR
206.248.7306
mwood@kiddermathews.com