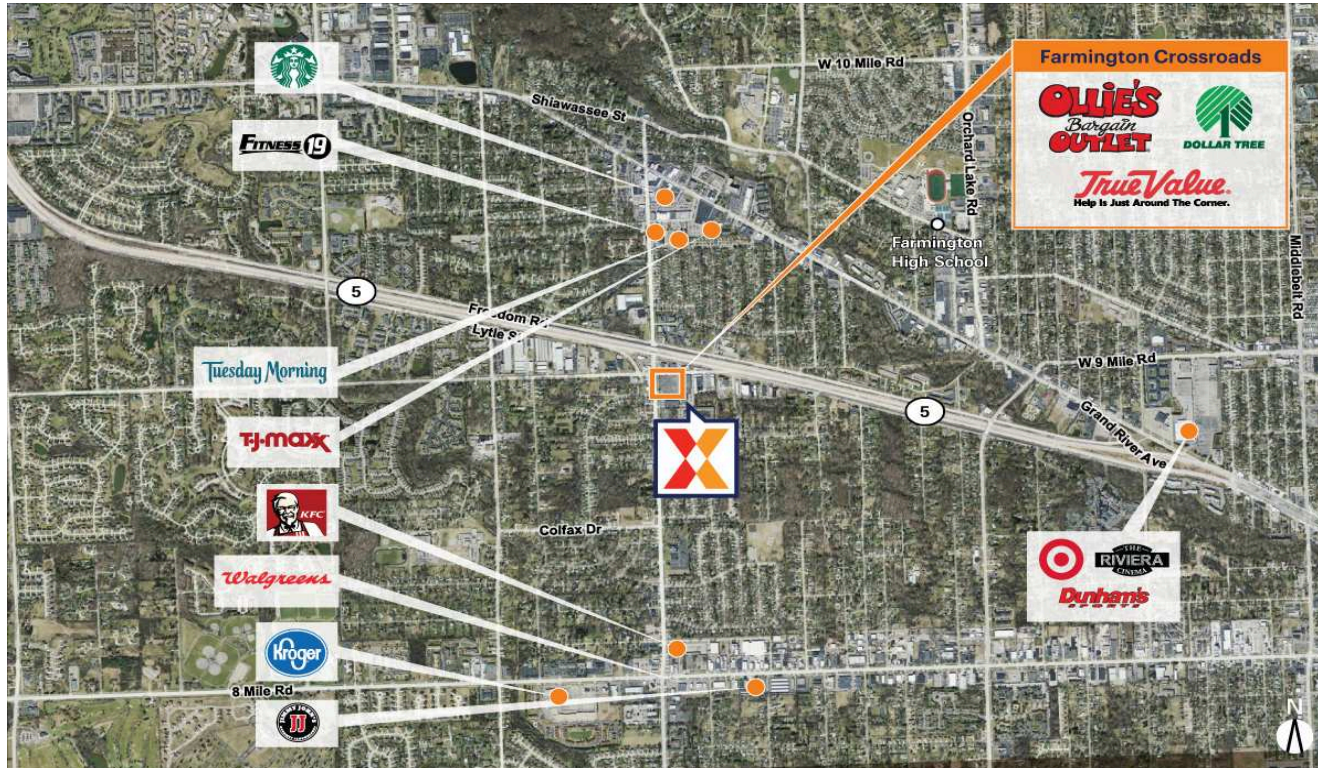


# Farmington Crossroads

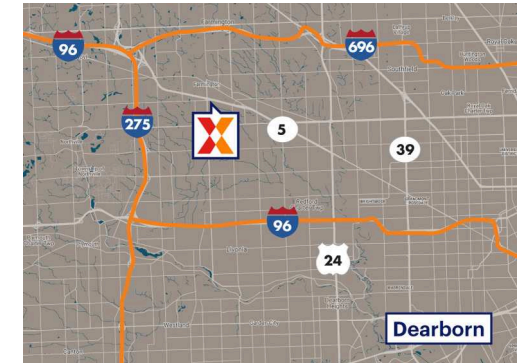
Detroit-Warren-Dearborn, MI

42.4544, -83.3748

22004-22128 Farmington Road | Farmington, MI 48336



Center Size: 87,268 SF



## Demographics

	1 Mile	3 Mile	5 Mile
	10,029	75,797	209,932
	4,748	32,751	88,634
	\$80,538	\$90,851	\$91,358

Center with strong anchor retailers including Ollie's Bargain Outlet, True Value Hardware & Dollar Tree

Surrounded by a dense population of 76,000+ residents with an average household income of \$91,000+ within 3 miles

Easily accessible center with three points of ingress/egress with close proximity to M-5

Benefits from strong lunch and dinner traffic for diverse restaurant selection

# Farmington Crossroads

Detroit-Warren-Dearborn, MI

42.4544, -83.3748

22004-22128 Farmington Road | Farmington, MI 48336



## Pad Opportunities

PAD A 43,560 SF/1

## Current Retailers

01	Ollie's Bargain Outlet	30,841 SF
01A	True Value	12,651 SF
02	Dollar Tree	9,576 SF
03	Great Clips	1,770 SF
3A	Anytime Fitness	5,470 SF
04	Brixmor Property Group	8,200 SF
05	Rainbow Restaurant	2,000 SF
06	Tofu House	2,000 SF
08	Sushi House	5,200 SF
09	DeBone Grill	1,600 SF
10	Advance America	1,600 SF
11	Miracle-Ear	1,600 SF
12	Ivy Salon	1,600 SF
13/14	Peterlin's	5,160 SF

N ●

1126