



FOR LEASE



812 sf Available
\$7.00 sf/yr (Gross)
Industrial

HIGHLIGHTS

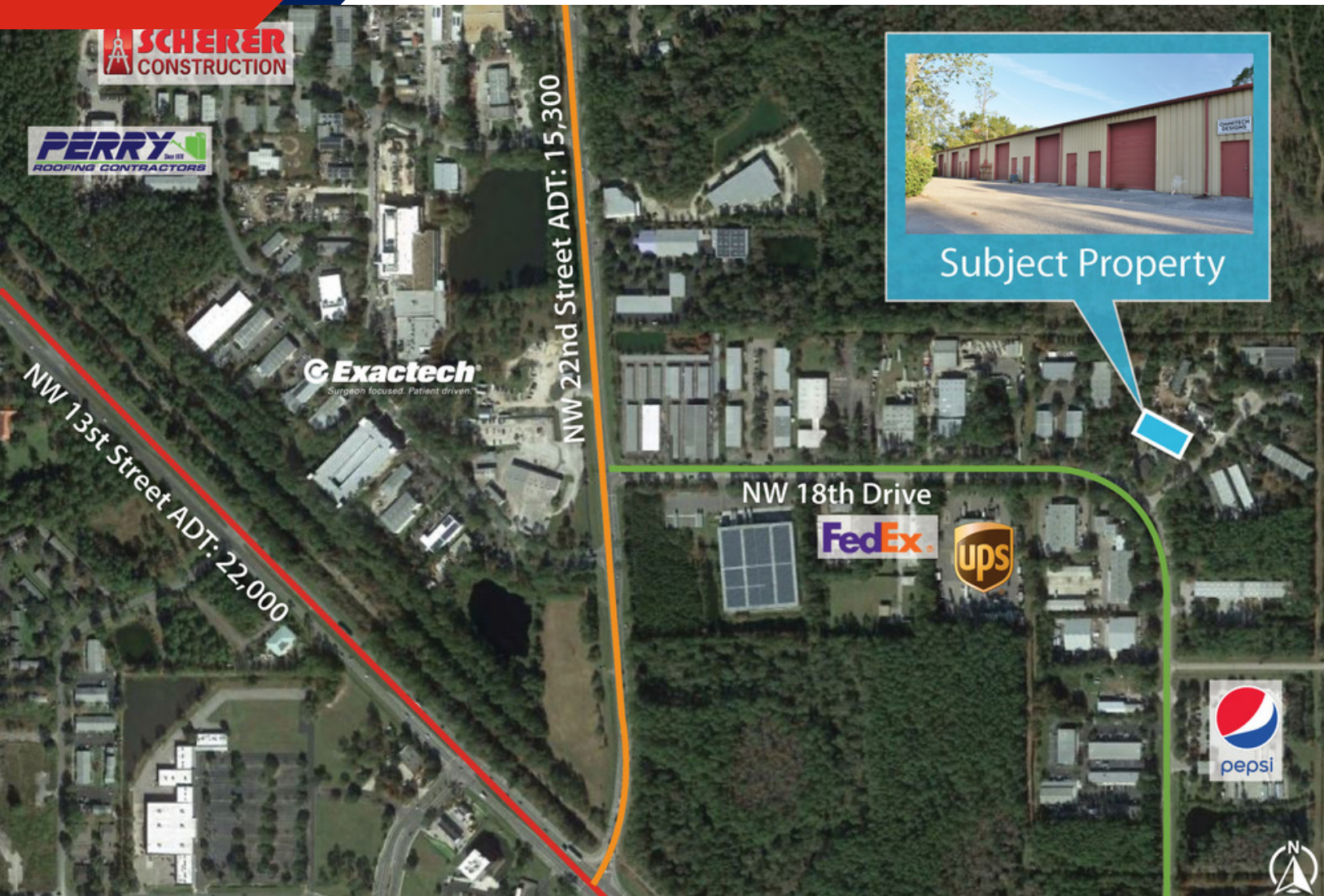
- Great opportunity to lease warehouse space in Northwest Industrial Park.
- Property features four available spaces for lease ranging from 775 square feet to 812 square feet, each with a grade level roll-up door. The property also features 14 dedicated parking spaces.
- Located across from UPS and proximate to FedEx, and the Pepsi and Budweiser distributorships.

Bennett Harrell

352.505.1687

bennett.harrell@avisonyoung.com

Aerial Map



Location
Northwest
Industrial Park



Features
Grade level
roll-up door



Proximity
UPS, FedEx,
and Pepsi

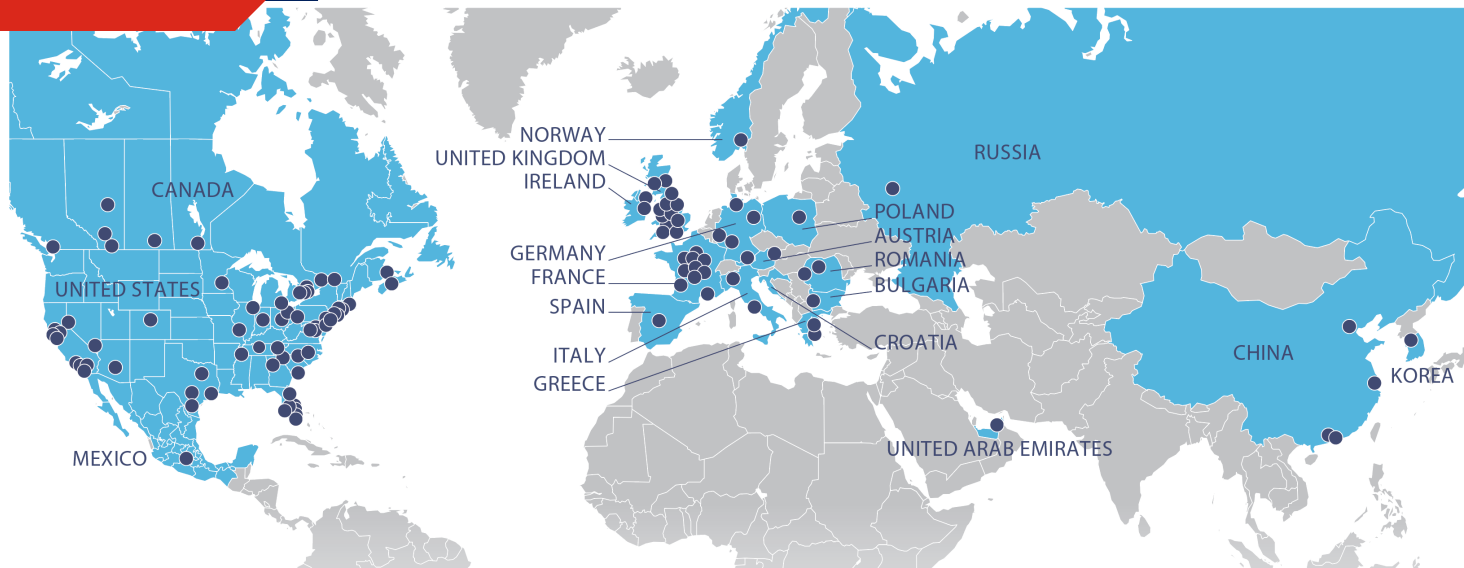


Parking
14 dedicated
parking spaces

Aerial Map



About Us



Avison Young at a Glance

Founded: **1978**
 Total Real Estate Professionals: **5,000**
 Offices: **120**
 Countries: **20**
 Brokerage Professionals: **1,600**
 Property Under Management: **290 million sf**

Avison Young is the world's fastest-growing commercial real estate services firm. Headquartered in Toronto, Canada, Avison Young is a collaborative, global firm owned and operated by its Principals. Founded in 1978, with legacies dating back more than 200 years, the company comprises approximately 5,000 real estate professionals in 120 offices in 20 countries. The firm's experts provide value-added, client-centric investment sales, leasing, advisory, management and financing services to clients across the office, retail, industrial, multi-family and hospitality sectors.



[View Our Listings](#)



[Contact Us](#)



[Visit Our Website](#)



[Subscribe Today](#)