

WAREHOUSE/OFFICE/CREATIVE SPACE FOR LEASE WITH PARKING

1620-1622 Folsom Street, San Francisco, CA 94103



SCOTT VIX, CCIM | SIOR

Dir: 415.268.2218

Cell: 415.309.4015

svix@tricommercial.com

CalDRE #01407761

TOM MARTINDALE, SIOR

Dir: 415.268.2285

Cell: 415.601.5066

tmartindale@tricommercial.com

CalDRE #00985891

TRI Commercial Real Estate Services 71 Stevenson St, Ste 1450, San Francisco, CA 94105



FOR LEASE CREATIVE MIXED-USE BUILDING

EXECUTIVE SUMMARY

1620-1622 Folsom Street



OFFERING SUMMARY

| | |
|----------------|--------------------------------------|
| Lease Rate: | \$36.00 SF/yr (Industrial Gross) |
| Building Size: | 4,375 SF |
| Available SF: | 4,375 SF |
| Zoning: | WMUG - WSOMA Mixed Use-General |

PROPERTY OVERVIEW

Warehouse / Office / Creative Space for Lease with Parking

PROPERTY HIGHLIGHTS

- Ground Floor: 2,200 SF
- Second Floor: 2,175 SF
- Paved side yard of 2,187 SF
- Recently remodeled
- Excellent natural light

GROUND FLOOR SPACE, PARKING AREA
1620-1622 Folsom Street



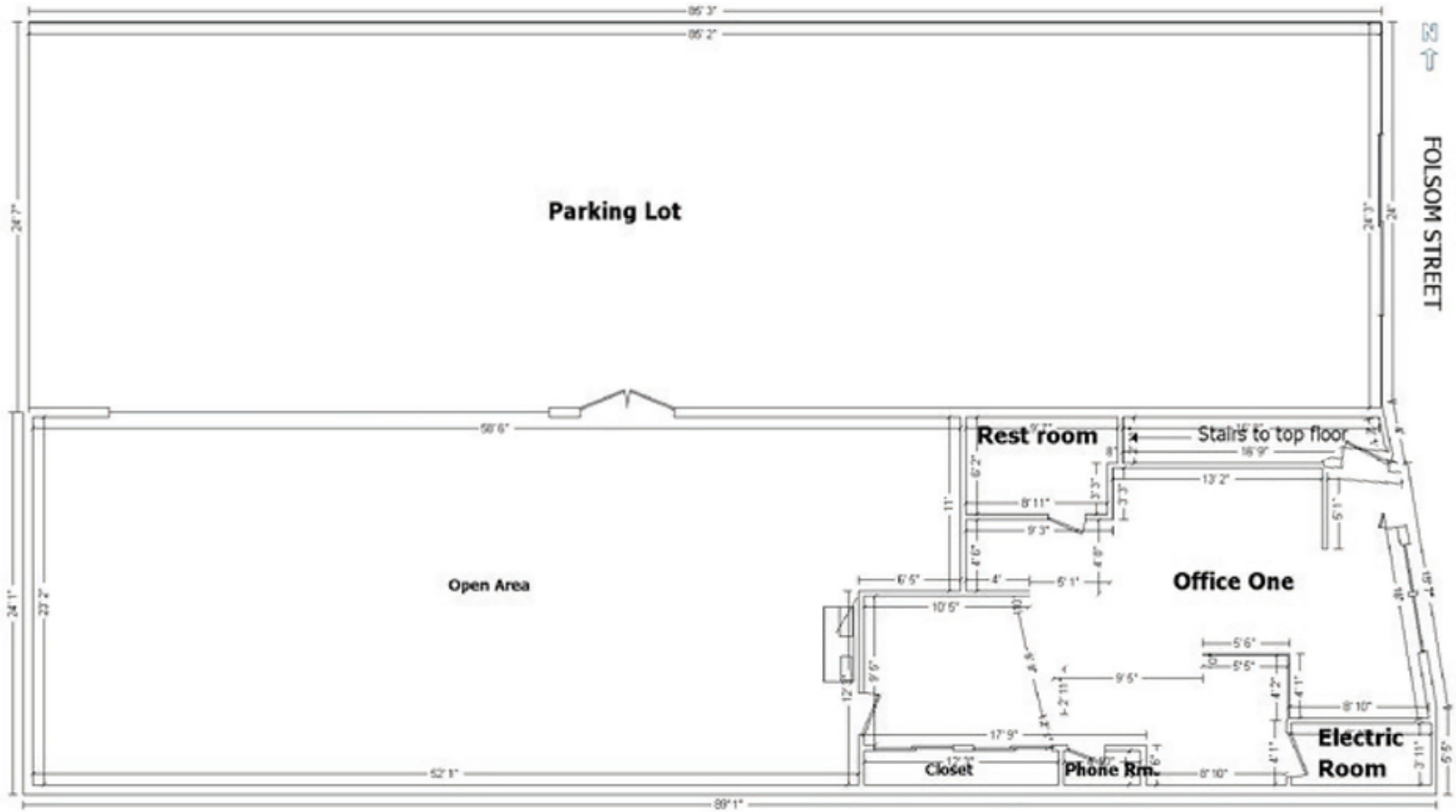
SIDE EXTERIOR DOOR, 2ND FLOOR SPACE
1620-1622 Folsom Street



FOR LEASE CREATIVE MIXED-USE BUILDING

GROUND FLOOR
1620-1622 Folsom Street

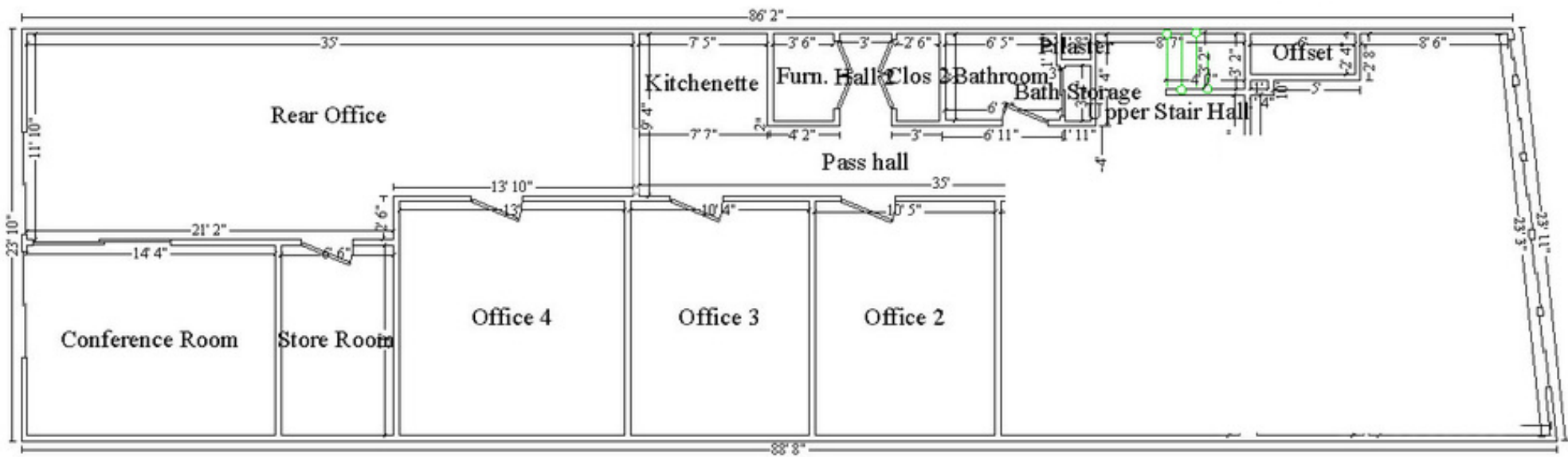
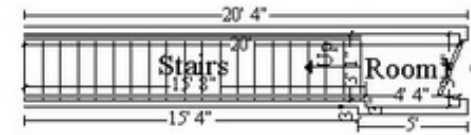
Ground Floor
2,200 SF



FOR LEASE CREATIVE MIXED-USE BUILDING

SECOND FLOOR
1620-1622 Folsom Street

Second Floor
2,175 SF



FOLSOM STREET

FOR LEASE CREATIVE MIXED-USE BUILDING

LOCATION MAPS

1620-1622 Folsom Street





Scott Vix, CCIM | SIOR

Dir: 415.268.2218

Cell: 415.309.4015

svix@tricommercial.com

CalDRE #01407761



Tom Martindale, SIOR

Dir: 415.268.2285

Cell: 415.601.5066

tmartindale@tricommercial.com

CalDRE #00985891

TRI Commercial Real Estate Services
71 Stevenson St Ste 1450, San Francisco, CA 94105

Dir: 415.268.2200

Fax: 415.269.2299

www.tricommercial.com

