



FOR LEASE

ATRIA CORPORATE CENTER

3033 Campus Drive
Plymouth, MN



HOME

HIGHLIGHTS

AVAILABLE

AMENITIES

LOCATION

Connie Doran
Executive Director
+1 612 305 2105
connie.doran@cushwake.com

Gordie Hampson
Senior Director
+1 952 465 3310
gordie.hampson@cushwake.com

Ryan Hampson
Associate
+1 952 465 3309
ryan.hampson@cushwake.com

Cushman & Wakefield
3500 American Blvd W Suite 200
Minneapolis, MN 55431
cushmanwakefield.com

ATRIA Corporate Center

3033 Campus Drive, Plymouth, MN



HOME

HIGHLIGHTS

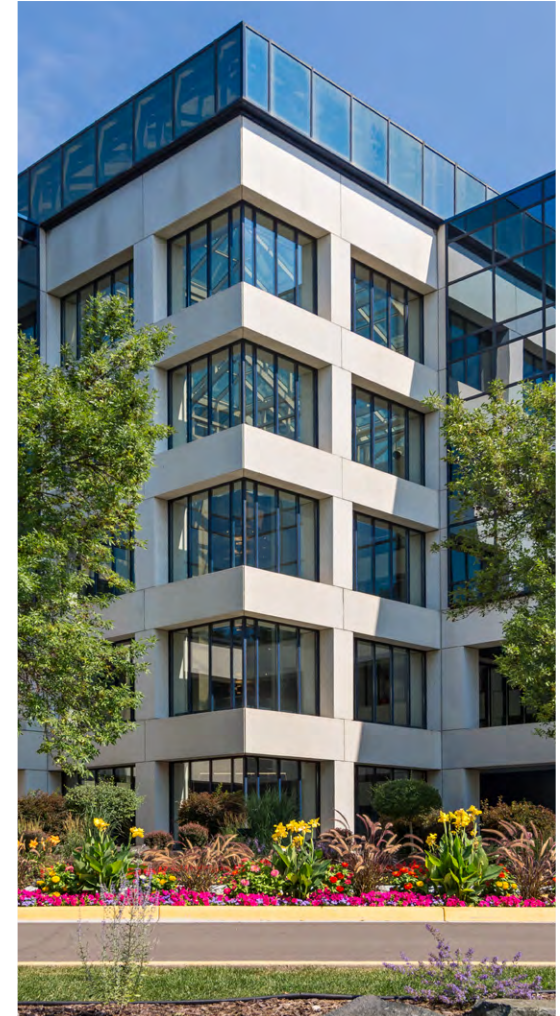
AVAILABLE

AMENITIES

LOCATION

Property Highlights

- Renovated “urban” lobby
- Highly visible Class A office building nestled in a scenic wooded setting
- Five-story architectural atrium
- Full on-site amenities including cafe, fitness center, conference center, ATM and vending
- Executive, ramp and surface parking
- On-site security, building management and engineering staff
- Certified LEED Gold through the US Green Building Council
- Awarded the Energy Star annually since 2007
- Awarded the BOMA 360 “Performance Building” designation
- Situated within the Northwest Business Campus
- Immediate access to I-494 & Hwy. 55
- Less than 10 minutes away from Ridgedale Mall



Connie Doran
Executive Director
+1 612 305 2105
connie.doran@cushwake.com

Gordie Hampson
Senior Director
+1 952 465 3310
gordie.hampson@cushwake.com

Ryan Hampson
Associate
+1 952 465 3309
ryan.hampson@cushwake.com

Cushman & Wakefield
3500 American Blvd W Suite 200
Minneapolis, MN 55431
cushmanwakefield.com

ATRIA Corporate Center

3033 Campus Drive, Plymouth, MN



HOME

HIGHLIGHTS

AVAILABLE

AMENITIES

LOCATION

Space Available

Click Suite # to View Floorplan

Suite Number	Square Footage	Net Rate	Available
W120	1,001	\$18.50	10/1/19
W230	12,278	\$18.50	90 Days
E490	20,000-45,000	\$18.50	90 Days

2019 Operating Expenses & Taxes: \$11.77 psf



Connie Doran
Executive Director
+1 612 305 2105
connie.doran@cushwake.com

Gordie Hampson
Senior Director
+1 952 465 3310
gordie.hampson@cushwake.com

Ryan Hampson
Associate
+1 952 465 3309
ryan.hampson@cushwake.com

Cushman & Wakefield
3500 American Blvd W Suite 200
Minneapolis, MN 55431
cushmanwakefield.com

ATRIA Corporate Center

3033 Campus Drive, Plymouth, MN



HOME

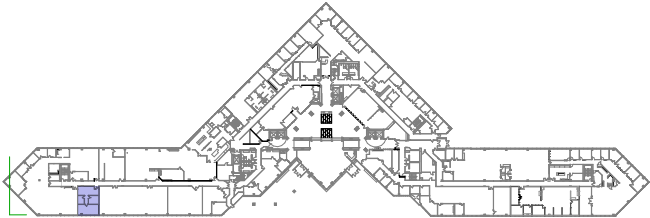
HIGHLIGHTS

AVAILABLE

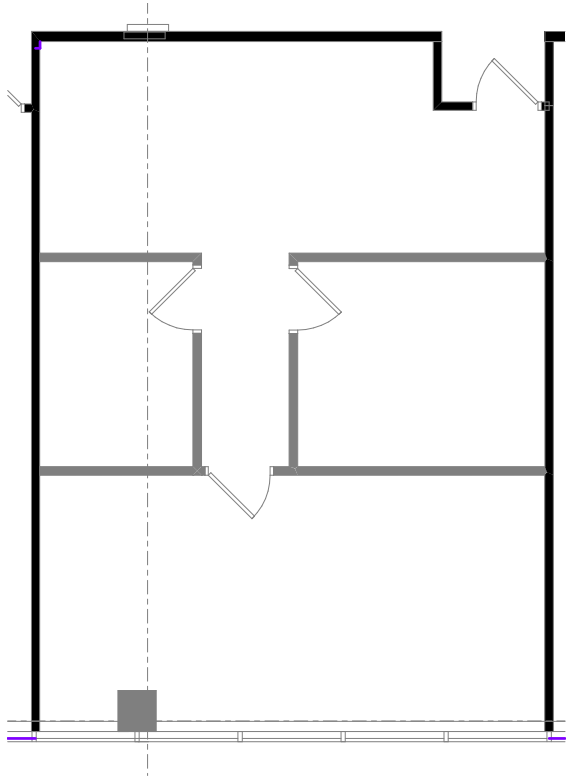
AMENITIES

LOCATION

Suite W120
1,001 RSF



Floor Location



Connie Doran
Executive Director
+1 612 305 2105
connie.doran@cushwake.com

Gordie Hampson
Senior Director
+1 952 465 3310
gordie.hampson@cushwake.com

Ryan Hampson
Associate
+1 952 465 3309
ryan.hampson@cushwake.com

Cushman & Wakefield
3500 American Blvd W Suite 200
Minneapolis, MN 55431
cushmanwakefield.com

ATRIA Corporate Center

3033 Campus Drive, Plymouth, MN



HOME

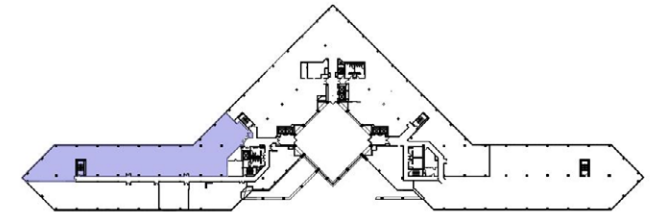
HIGHLIGHTS

AVAILABLE

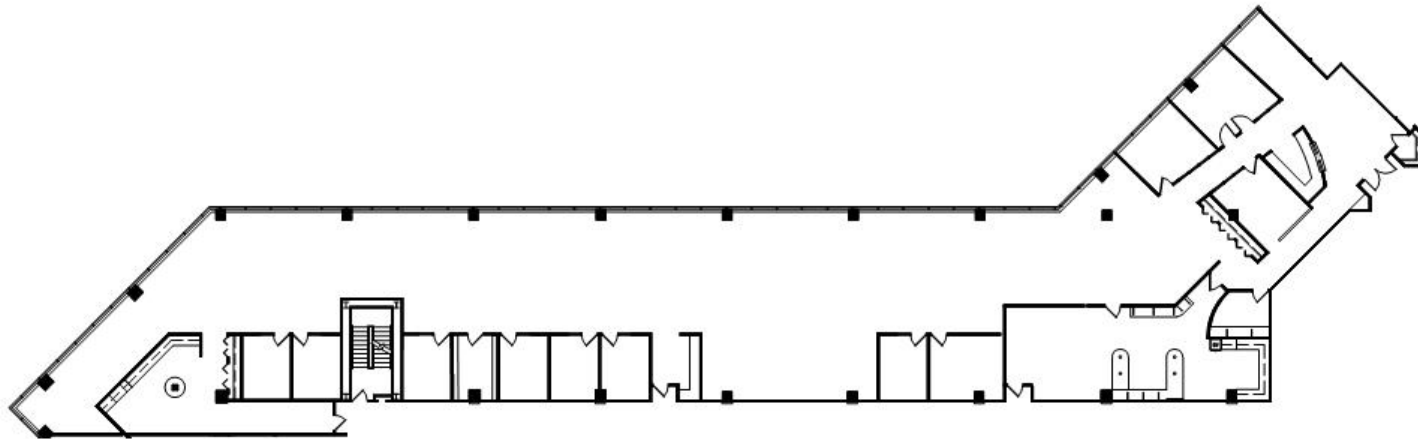
AMENITIES

LOCATION

Suite W230
12,278 RSF



Floor Location



Connie Doran
Executive Director
+1 612 305 2105
connie.doran@cushwake.com

Gordie Hampson
Senior Director
+1 952 465 3310
gordie.hampson@cushwake.com

Ryan Hampson
Associate
+1 952 465 3309
ryan.hampson@cushwake.com

Cushman & Wakefield
3500 American Blvd W Suite 200
Minneapolis, MN 55431
cushmanwakefield.com

ATRIA Corporate Center

3033 Campus Drive, Plymouth, MN



HOME

HIGHLIGHTS

AVAILABLE

AMENITIES

LOCATION

On-Site Amenities

- Cafe
- Conference center
- Fitness center
- Underground parking
- Security guard
- ATM
- Vending

Area Amenities

- Adjacent Crown Plaza Hotel
- Life Time Fitness
- Plymouth City Center
- WestHealth Regional Medical Center & Emergency Room Urgent Care
- Plymouth Library
- 15 area banks
- 100 miles of recreational trails

Area Restaurants

- Buffalo Wild Wings
- Caribou & Starbucks Coffee
- Chili's Grill & Bar
- Famous Dave's Barbecue
- Italianni's
- Kobe
- Lucky 13
- Noodles & Company
- Old Chicago
- Perkins Family Restaurant
- Red Robin
- Ruby Tuesday
- Solos Pizza



Fitness Center



The Woods Cafe

Connie Doran
Executive Director
+1 612 305 2105
connie.doran@cushwake.com

Gordie Hampson
Senior Director
+1 952 465 3310
gordie.hampson@cushwake.com

Ryan Hampson
Associate
+1 952 465 3309
ryan.hampson@cushwake.com

Cushman & Wakefield
3500 American Blvd W Suite 200
Minneapolis, MN 55431
cushmanwakefield.com

ATRIA Corporate Center

3033 Campus Drive, Plymouth, MN



HOME

HIGHLIGHTS

AVAILABLE

AMENITIES

LOCATION



Connie Doran
Executive Director
+1 612 305 2105
connie.doran@cushwake.com

Gordie Hampson
Senior Director
+1 952 465 3310
gordie.hampson@cushwake.com

Ryan Hampson
Associate
+1 952 465 3309
ryan.hampson@cushwake.com

Cushman & Wakefield
3500 American Blvd W Suite 200
Minneapolis, MN 55431
cushmanwakefield.com