

# Gene Wright Office Building

220 Main Street  
Platte City, MO 64079



Josh Haith  
Office: (913) 888-3456 x 7  
Cell: (913) 515-1115  
Email: [Josh@Haith.com](mailto:Josh@Haith.com)

Zoning:	Office
Year Constructed:	1936
Location:	On Main Street, ½ Block from Court House Minutes from KCI International Airport
Occupancy:	100% Leased
Lease Type:	Full Service Leases in place; tenants handle their own janitorial common area janitorial done weekly
HVAC:	All units have been replaced in last 5 years except 1
Window:	Front windows 15 years old, back windows replaced 2018
Roof:	Replaced 2012
Taxes:	2018: \$2,257.74
Lot Size:	6,969.6 sq. ft.
Parking:	6 private spaces, plus public
Building:	6,000 sq. ft.
Offering Price:	\$285,000

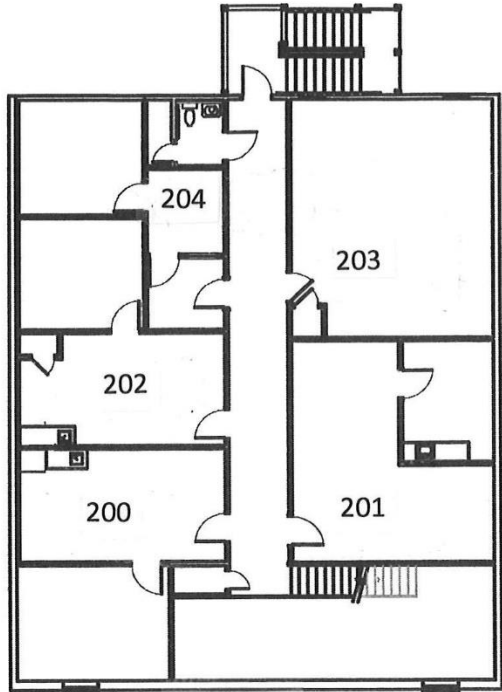
**The Gene Wright Office Building has a community of tenants that treat each other like family. This is an investment property that requires little to no management.**

**FOR FINANCIAL INFORMATION CONTACT JOSH HAITH**

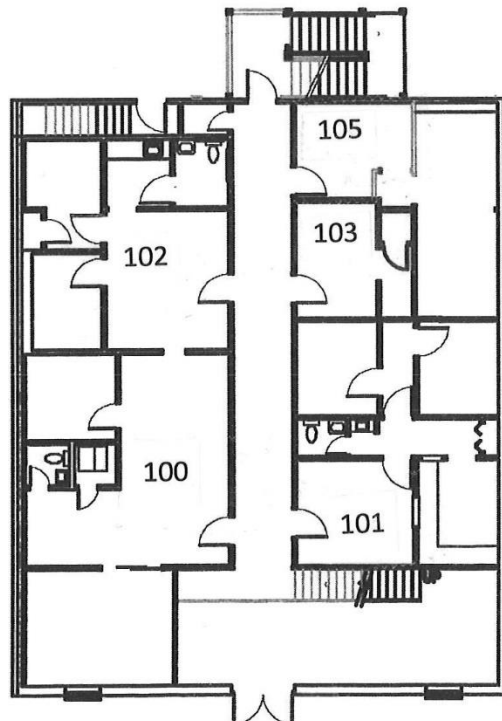


Josh Haith  
Office: (913) 888-3456 x 7  
Cell: (913) 515-1115  
Email: Josh@Haith.com

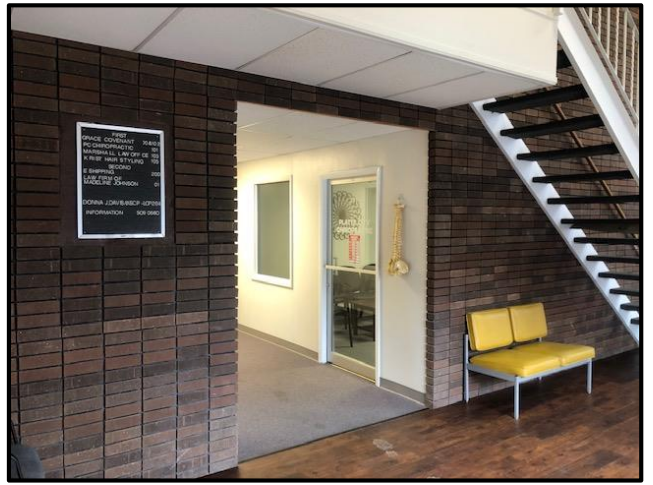
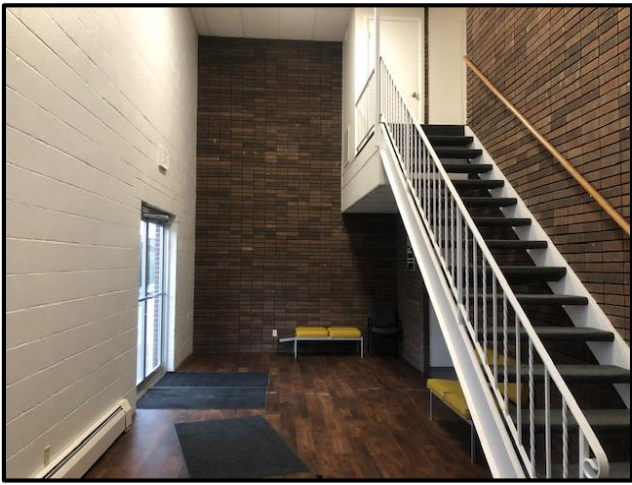
**Gene Wright Office Building**  
**220 Main Street**  
**Platte City, MO 64079**



2<sup>nd</sup> Floor



1<sup>st</sup> Floor



Foundation and basement joist