

CLASS A OFFICE SPACE FOR LEASE

# GOLDEN WEST TOWER BUILDING

1970 Broadway, Oakland, CA

[www.1970Broadway.com](http://www.1970Broadway.com)

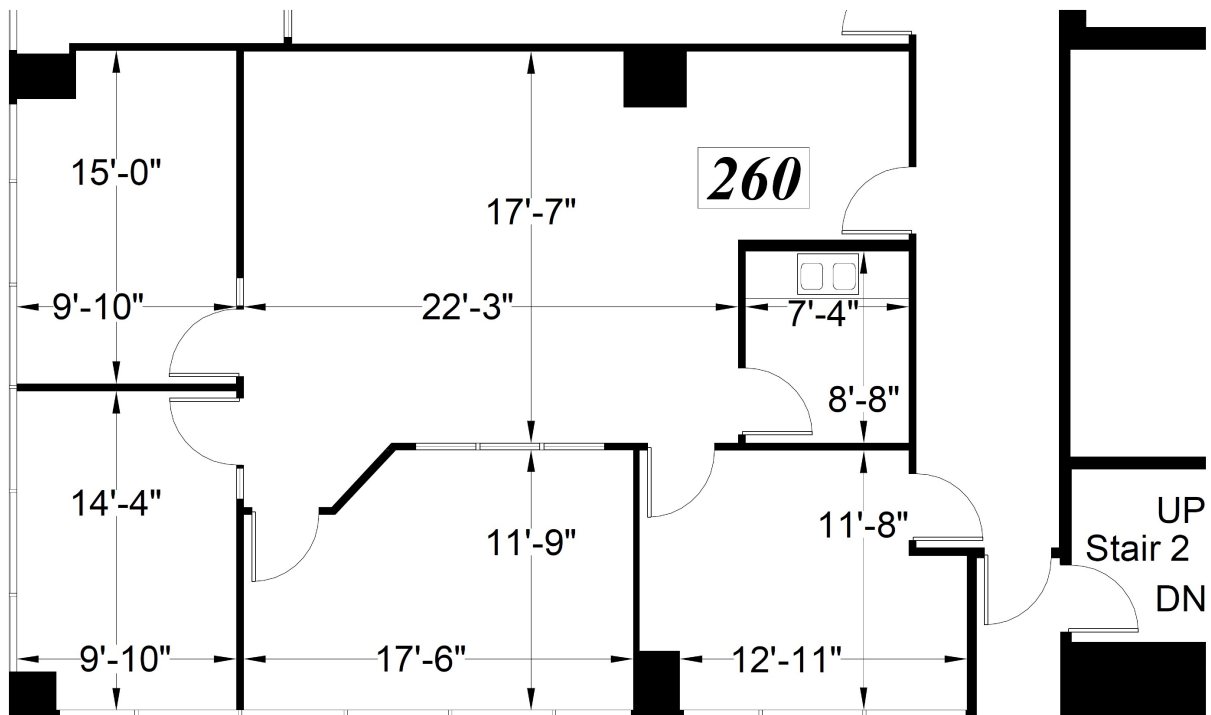


 **TRANSWESTERN**®

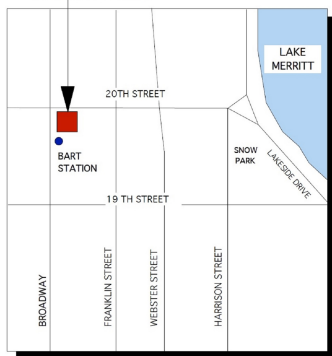
[www.transwestern.com](http://www.transwestern.com)

**CLASS A OFFICE SPACE FOR LEASE | GOLDEN WEST TOWER BUILDING**

1970 Broadway, Oakland, CA

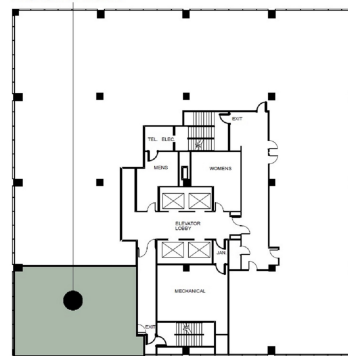


THE TOWER BUILDING  
1970 BROADWAY



SITE LOCATION MAP

FLOOR  
LOCATION



2ND FLOOR KEY PLAN

**Suite 260: ±1,591 RSF**

**\$4.60 /RSF/Month, FSG**

*Plans not to scale*

**LEASING INFORMATION**

**Bob Maderious**  
Senior Vice President  
925.357.2010

bob.maderious@transwestern.com  
CA DRE LIC. 00616136

[www.1970Broadway.com](http://www.1970Broadway.com)

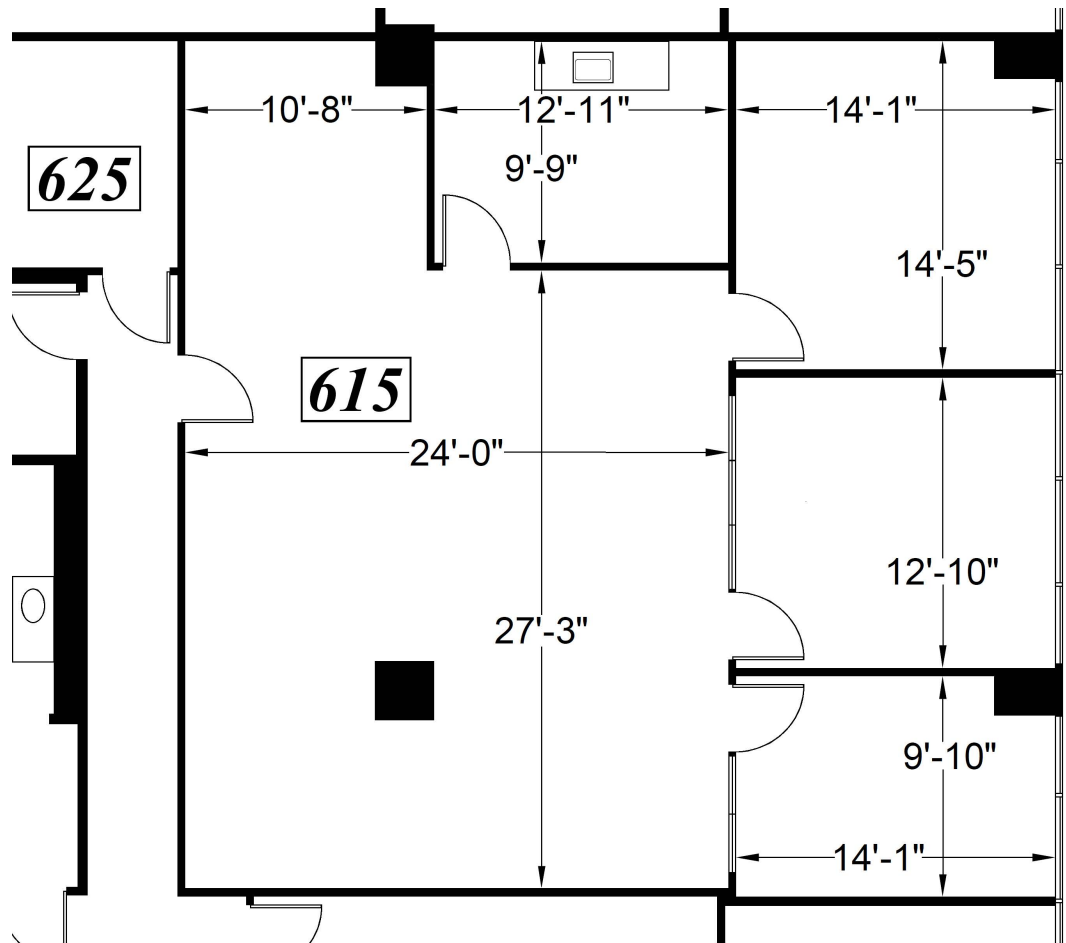


2175 N. California Blvd., Suite 415  
Walnut Creek, CA 94596  
CA BROKER LIC. 01263636  
T 925.357.2000  
[www.transwestern.com](http://www.transwestern.com)

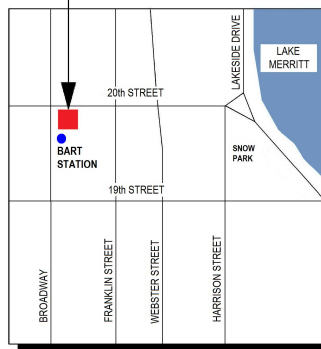
The information provided herein was obtained from sources believed reliable; however, Transwestern makes no guarantees, warranties or representations as to the completeness or accuracy thereof. The presentation of this property is submitted subject to errors, omissions, change of price or conditions, prior sale or lease, or withdrawal without notice. Copyright © 2019 Transwestern.

**CLASS A OFFICE SPACE FOR LEASE | GOLDEN WEST TOWER BUILDING**

1970 Broadway, Oakland, CA

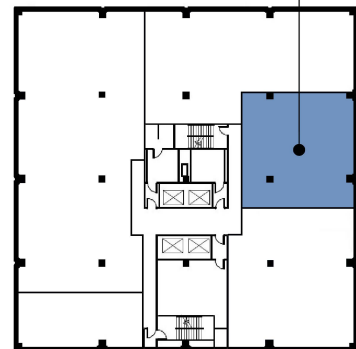


THE TOWER BUILDING  
1970 BROADWAY



SITE LOCATION MAP

FLOOR LOCATION



6TH FLOOR KEY PLAN

**AVAILABLE Aug 2020**  
**Suite 615: ±1,802 RSF**

**\$4.85 /RSF/Month, FSG**

*Plans not to scale*

**LEASING INFORMATION**

**Bob Maderious**  
Senior Vice President  
925.357.2010

bob.maderious@transwestern.com  
CA DRE LIC. 00616136

[www.1970Broadway.com](http://www.1970Broadway.com)

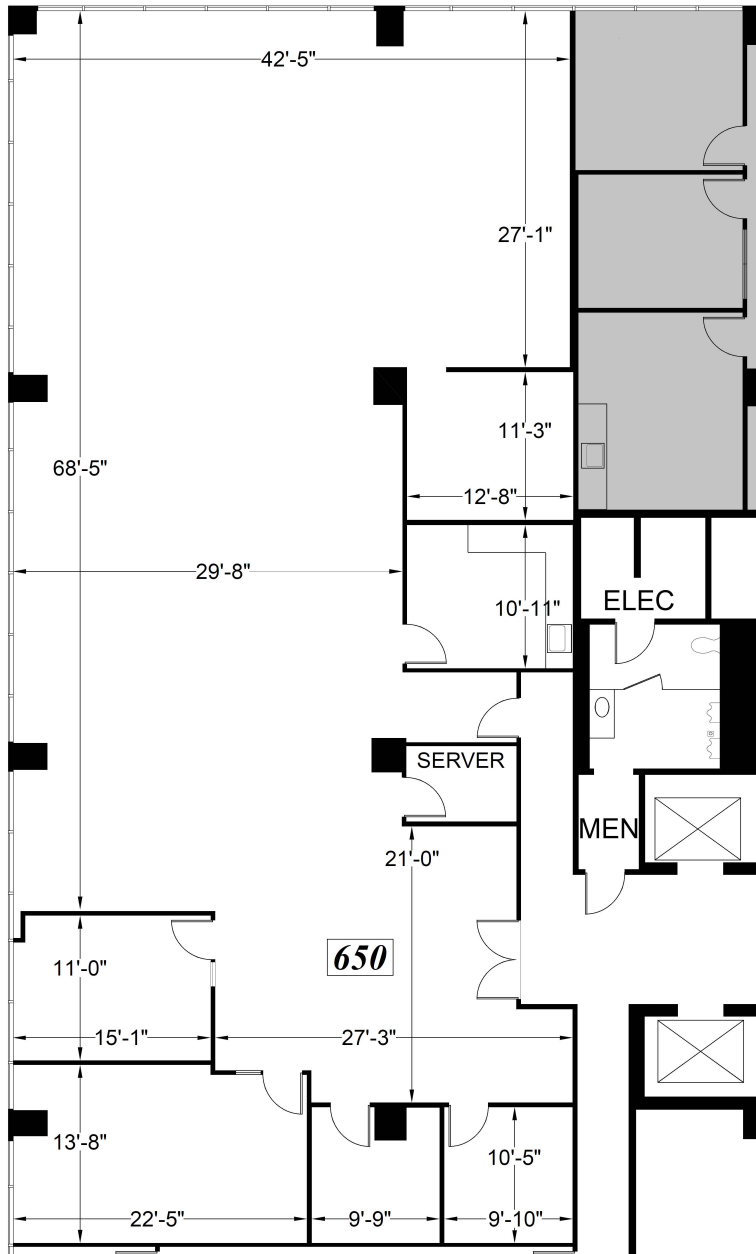


2175 N. California Blvd., Suite 415  
Walnut Creek, CA 94596  
CA BROKER LIC. 01263636  
T 925.357.2000  
[www.transwestern.com](http://www.transwestern.com)

The information provided herein was obtained from sources believed reliable; however, Transwestern makes no guarantees, warranties or representations as to the completeness or accuracy thereof. The presentation of this property is submitted subject to errors, omissions, change of price or conditions, prior sale or lease, or withdrawal without notice. Copyright © 2019 Transwestern.

# CLASS A OFFICE SPACE FOR LEASE | GOLDEN WEST TOWER BUILDING

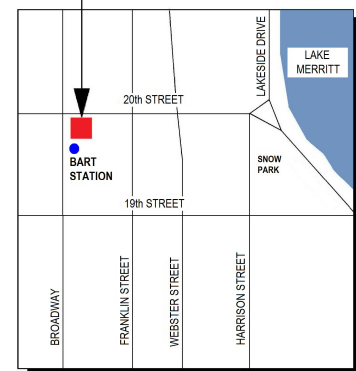
1970 Broadway, Oakland, CA



**AVAILABLE Sep 2020**  
**Suite 650: ±4,972 RSF**

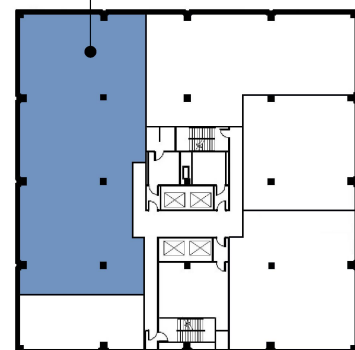
**\$4.95 /RSF/Month, FSG**

THE TOWER BUILDING  
1970 BROADWAY



SITE LOCATION MAP

FLOOR  
LOCATION



6TH FLOOR KEY PLAN

*Plans not to scale*

## LEASING INFORMATION

**Bob Maderious**  
Senior Vice President  
925.357.2010

bob.maderious@transwestern.com  
CA DRE LIC. 00616136

[www.1970Broadway.com](http://www.1970Broadway.com)

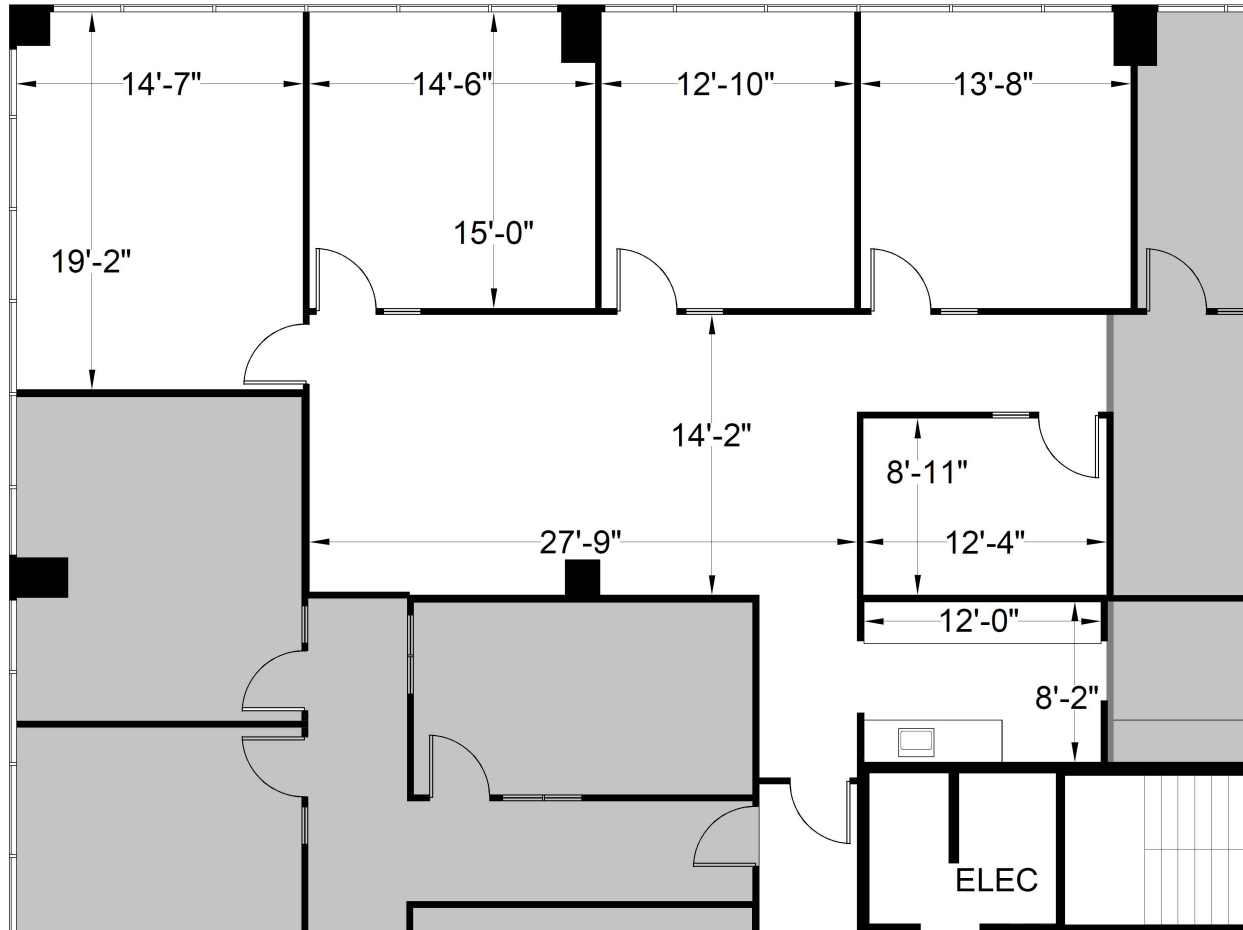
**T TRANSWESTERN®**

2175 N. California Blvd., Suite 415  
Walnut Creek, CA 94596  
CA BROKER LIC. 01263636  
T 925.357.2000  
[www.transwestern.com](http://www.transwestern.com)

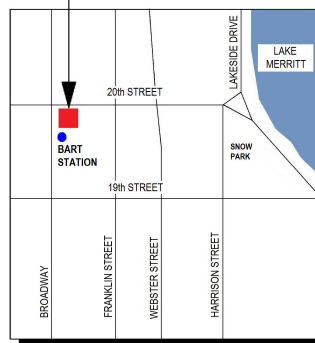
The information provided herein was obtained from sources believed reliable; however, Transwestern makes no guarantees, warranties or representations as to the completeness or accuracy thereof. The presentation of this property is submitted subject to errors, omissions, change of price or conditions, prior sale or lease, or withdrawal without notice. Copyright © 2019 Transwestern.

**CLASS A OFFICE SPACE FOR LEASE | GOLDEN WEST TOWER BUILDING**

1970 Broadway, Oakland, CA

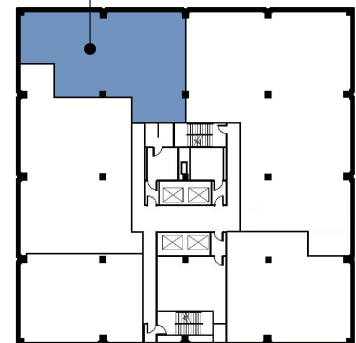


THE TOWER BUILDING  
1970 BROADWAY



SITE LOCATION MAP

FLOOR  
LOCATION



12TH FLOOR KEY PLAN

**AVAILABLE June 2020**  
**Suite 1270: ±2,062 RSF**

**\$5.15 /RSF/Month, FSG**

*Plans not to scale*

**LEASING INFORMATION**

**Bob Maderious**  
Senior Vice President  
925.357.2010

bob.maderious@transwestern.com  
CA DRE LIC. 00616136

[www.1970Broadway.com](http://www.1970Broadway.com)

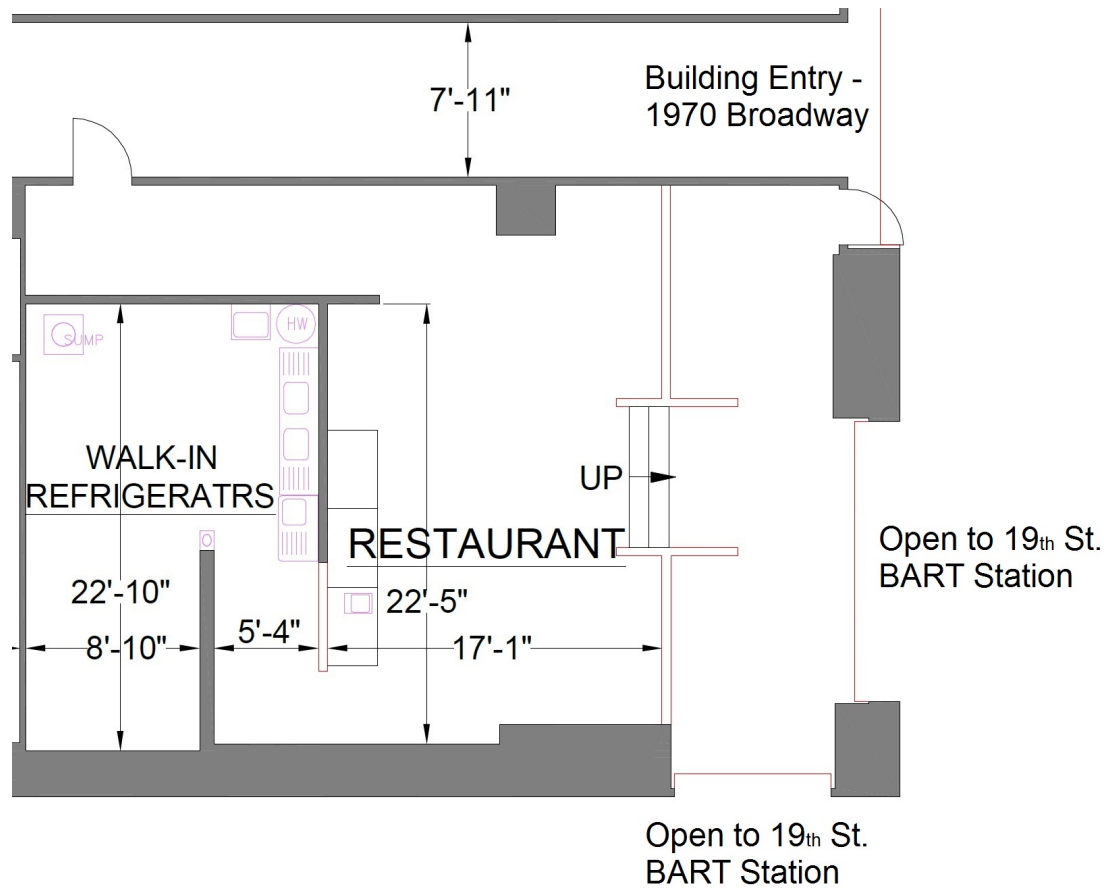


2175 N. California Blvd., Suite 415  
Walnut Creek, CA 94596  
CA BROKER LIC. 01263636  
T 925.357.2000  
[www.transwestern.com](http://www.transwestern.com)

The information provided herein was obtained from sources believed reliable; however, Transwestern makes no guarantees, warranties or representations as to the completeness or accuracy thereof. The presentation of this property is submitted subject to errors, omissions, change of price or conditions, prior sale or lease, or withdrawal without notice. Copyright © 2020 Transwestern.

# CLASS A OFFICE SPACE FOR LEASE | GOLDEN WEST TOWER BUILDING

1970 Broadway, Oakland, CA

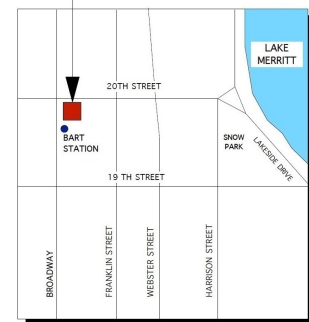


- Space opens directly into the 19th Street BART Station, across from the Station Agent's Booth and Fare Gates
- High traffic, high visibility location (Unique In-station Opportunity)
- Eyebrow signage
- 19th Street BART Station modernization is scheduled to begin 2019.

Suite SB-1 | ±1,416 RSF

\$3.25/RSF/Month, Net-Net-Net

THE TOWER BUILDING  
1970 BROADWAY



SITE LOCATION MAP



Plans not to scale

## LEASING INFORMATION

**Bob Maderious**  
Senior Vice President  
925.357.2010

bob.maderious@transwestern.com  
CA DRE LIC. 00616136

[www.1970Broadway.com](http://www.1970Broadway.com)



2175 N. California Blvd., Suite 415  
Walnut Creek, CA 94596  
CA BROKER LIC. 01263636  
T 925.357.2000  
[www.transwestern.com](http://www.transwestern.com)

The information provided herein was obtained from sources believed reliable; however, Transwestern makes no guarantees, warranties or representations as to the completeness or accuracy thereof. The presentation of this property is submitted subject to errors, omissions, change of price or conditions, prior sale or lease, or withdrawal without notice. Copyright © 2019 Transwestern.