

Commercial Leasing Office
5836 Fayetteville Rd, Suite 201
Durham, NC 27713
Ph: 919-484-1053
Fax: 919-484-1996
www.ticonproperties.com
brent@ticonproperties.com

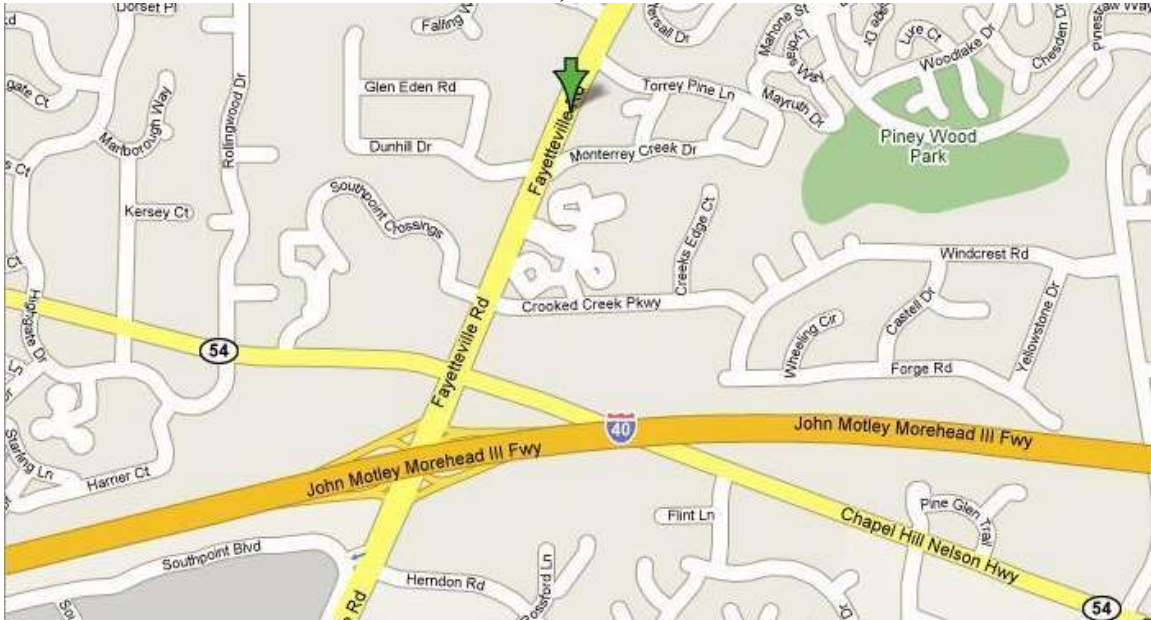


Pine Ridge Office Centre

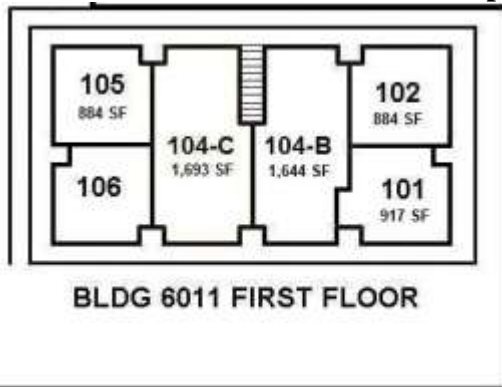
- **Second Floor space**
- **No TICAM**
- **\$13.50 - \$16.50 psf**
- **3 to 5 year lease term**
- **Tenant responsible for electricity, janitorial, phone/internet, personal guarantor**
- **Water, Sewer, Trash service is included**
- **3% annual rent increases**

INFORMATION HEREIN IS SUBJECT TO VERIFICATION BY ALL PARTIES AND MAY CHANGE WITHOUT NOTICE. PLANS NOT TO SCALE; FOR GENERAL APPROXIMATION ONLY; SUBJECT TO CHANGE, REVISION, OMISSION AT ANY TIME.

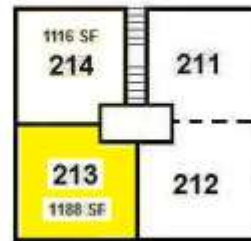
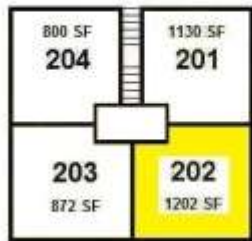
**Location:
6015 & 6011 Fayetteville Rd
Durham, NC 27713**



Available space is highlighted

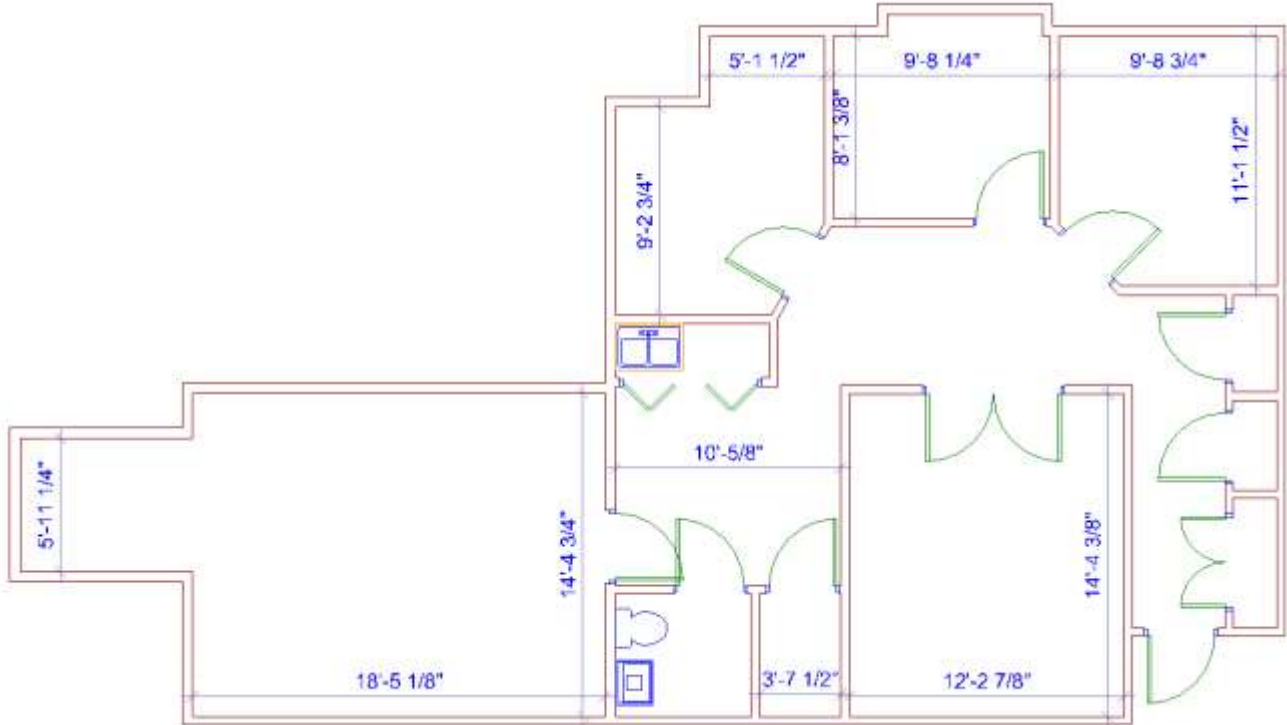


--- FAYETTEVILLE ROAD ---



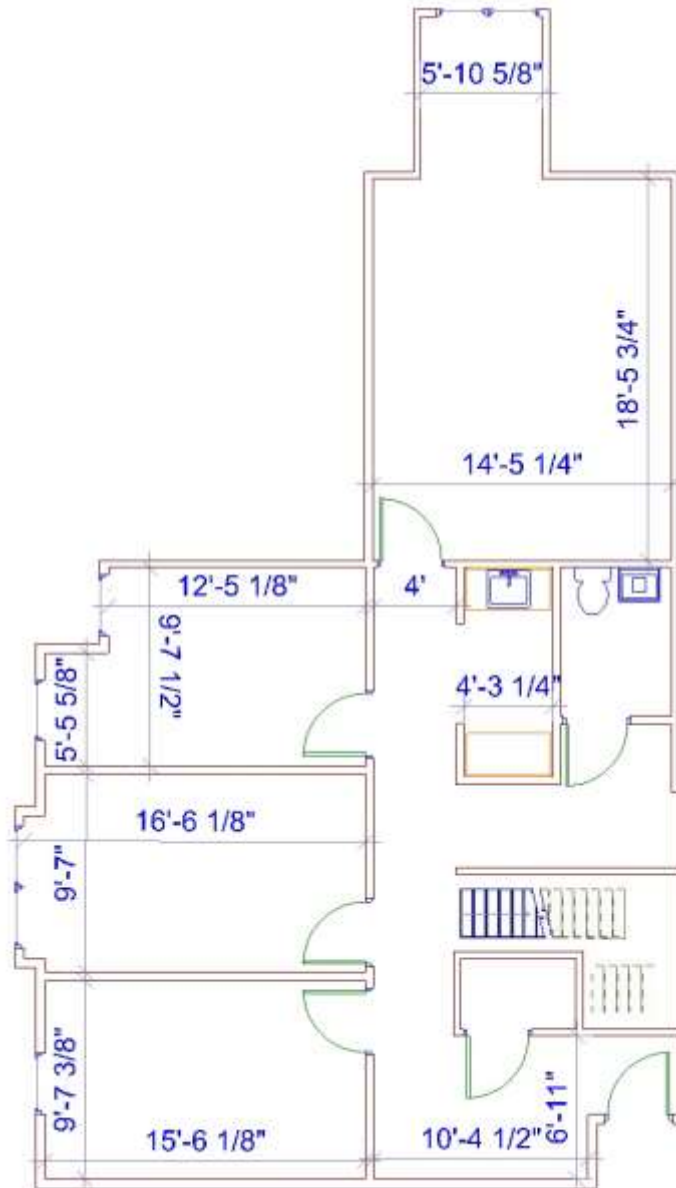
INFORMATION HEREIN IS SUBJECT TO VERIFICATION BY ALL PARTIES AND MAY CHANGE WITHOUT NOTICE. PLANS NOT TO SCALE; FOR GENERAL APPROXIMATION ONLY; SUBJECT TO CHANGE, REVISION, OMISSION AT ANY TIME.

Building 6011 Suite 202
Approx 1,202 Square Feet
\$13.50 PSF or \$1,352.25 / month
Interior dimensions are estimated
Second Floor Walk Up



INFORMATION HEREIN IS SUBJECT TO VERIFICATION BY ALL PARTIES AND MAY CHANGE WITHOUT NOTICE. PLANS NOT TO SCALE; FOR GENERAL APPROXIMATION ONLY; SUBJECT TO CHANGE, REVISION, OMISSION AT ANY TIME.

Building 6015 Suite 213
Approx 1,188 Square Feet
\$13.50 PSF or \$1,336.50 / month
Interior dimensions are estimated
Second Floor Walk Up



INFORMATION HEREIN IS SUBJECT TO VERIFICATION BY ALL PARTIES AND MAY CHANGE WITHOUT NOTICE. PLANS NOT TO SCALE; FOR GENERAL APPROXIMATION ONLY; SUBJECT TO CHANGE, REVISION, OMISSION AT ANY TIME.

INFORMATION HEREIN IS SUBJECT TO VERIFICATION BY ALL PARTIES AND MAY CHANGE WITHOUT NOTICE. PLANS NOT TO SCALE; FOR GENERAL APPROXIMATION ONLY; SUBJECT TO CHANGE, REVISION, OMISSION AT ANY TIME.