

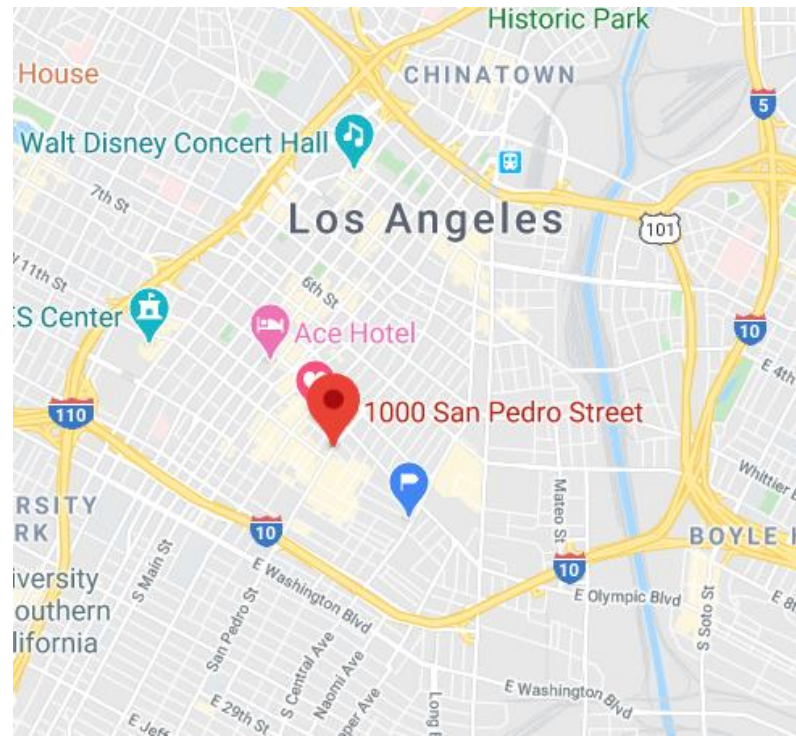
FOR SUBLEASE

1000 S. San Pedro St. # C&D, LA, CA



PROPERTY HIGHLIGHTS

- Well located in the heart of the Fashion District (**Very close to San Pedro Wholesale Mart**)
- **Asking \$4,500 / month gross rent**
- **± 2,700 SF Showroom / Office space**
POL ± 4,895 SF buildings (4 units total)
- **Excellent access to I-10 and 5 Freeways**
- **Concrete Block Construction**
- **Warehouse / Industrial Zoning | LAM2**
- **AVAILABLE FOR IMMEDIATE OCCUPANCY!!!**



WWW.THEPHRONESISGROUP.COM

For leasing information,
please contact:

Jamie H. Kim | Executive Director
D: 714.329.5650

Jamie.Kim@thePhronesisGroup.com

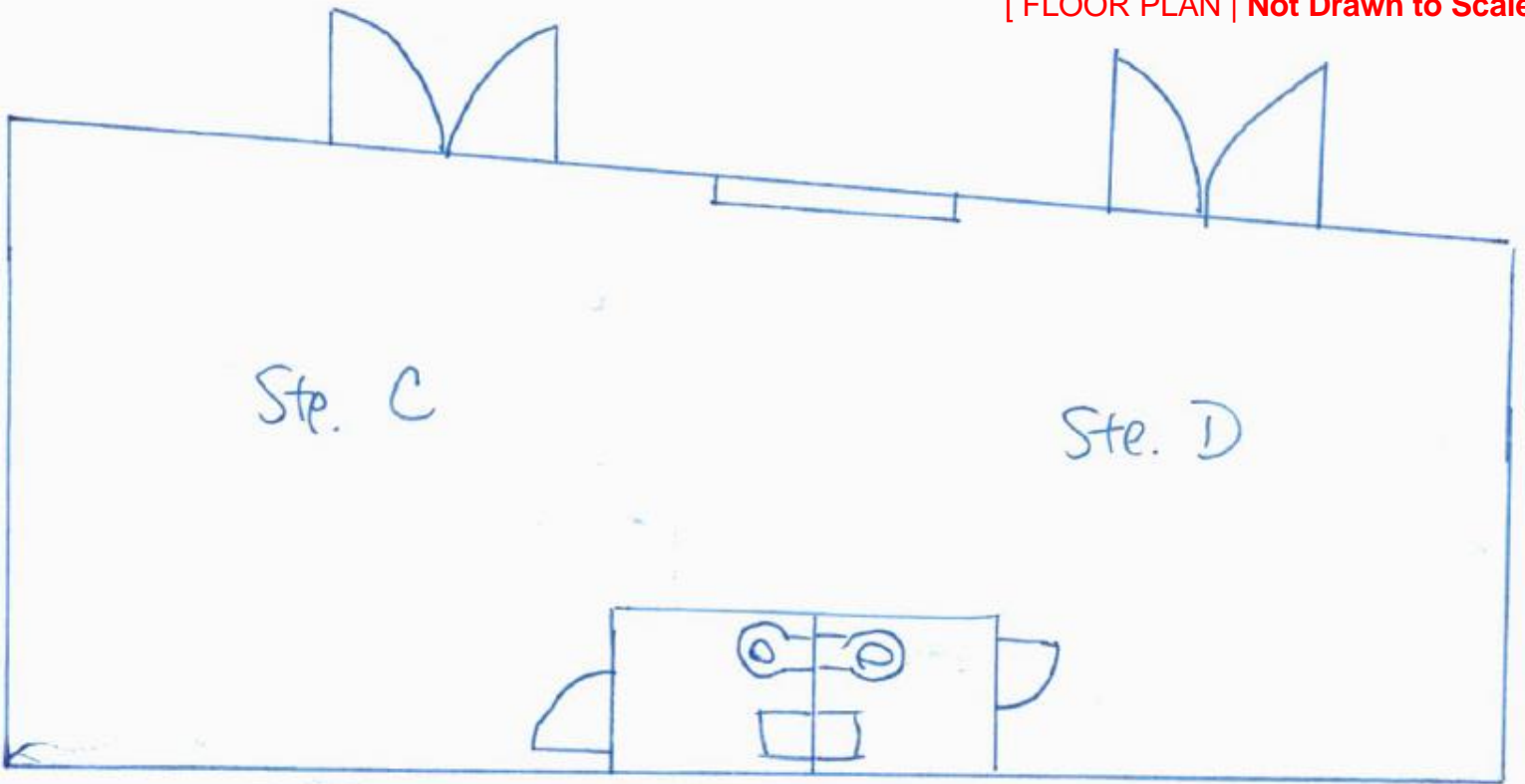
Lic. # 01423006

FOR SUBLEASE

1000 S. San Pedro St. # C&D, LA, CA



[FLOOR PLAN | Not Drawn to Scale]



For leasing information,
please contact:

Jamie H. Kim | Executive Director

D: 714.329.5650

Jamie.Kim@thePhronesisGroup.com

Lic. # 01423006