

**For Lease**

# Sports Arena Dock High with Yard

3612 Kurtz Street, San Diego, California 92110



## Property Details

<b>Building:</b>	±21,000 SF tilt-up warehouse
<b>Office Area:</b>	±1,200 SF
<b>Yard:</b>	±23,500 SF fenced yard
<b>Truck Doors:</b>	7 dock high & ramped doors
<b>Clear Height:</b>	18'
<b>Power:</b>	220 V 3-Phase
<b>Zoning:</b>	IL-1-1 (HUB Zone)

## Property Highlights

- Sprinklered facility
- Across the street from Kobey's Swap Meet
- Secured yard area
- Available April 2013
- Gas service

**Lease Rate: \$0.90/SF Gross**

### Rex A. Huffman

Vice President  
858.458.3360 [Direct]  
rhuffman@voitco.com  
Lic. #00648675

4747 Executive Dr., Suite 800, San Diego, CA 92121  
858.453.0505 | 858.408.3976 Fax | Lic #01333376 | [www.voidco.com](http://www.voidco.com)

# Voit

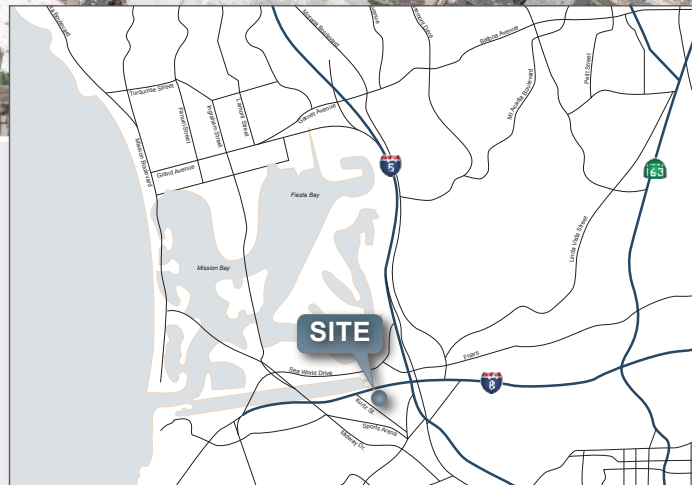
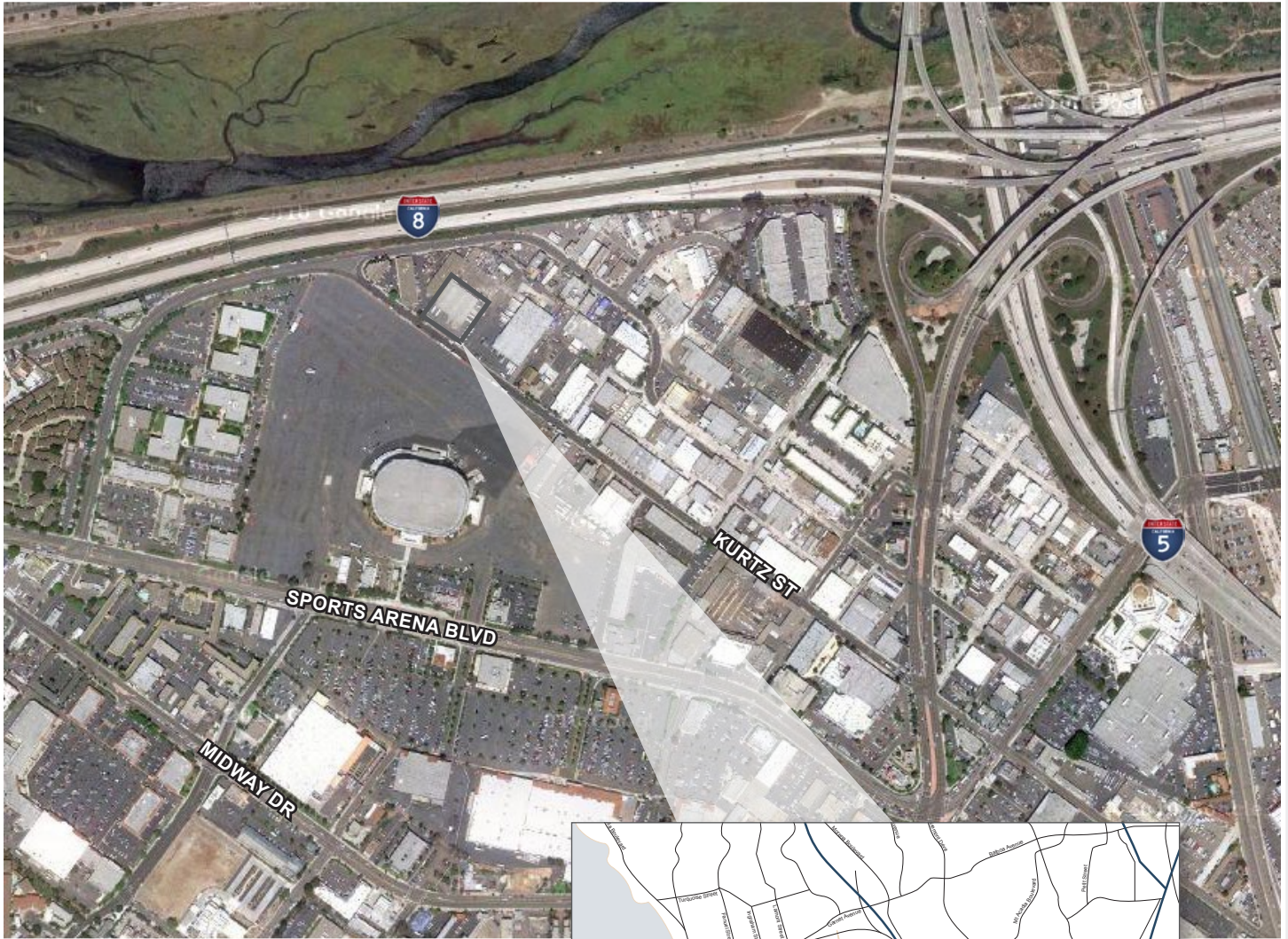
REAL ESTATE SERVICES



For Lease

# Sports Arena Dock High with Yard

3612 Kurtz Street, San Diego, California 92110



**Rex A. Huffman**

Vice President

858.458.3360 [Direct]

[rhuffman@voitco.com](mailto:rhuffman@voitco.com)

Lic. #00648675

4747 Executive Dr., Suite 800, San Diego, CA 92121

858.453.0505 | 858.408.3976 Fax | Lic #01333376 | [www.voitco.com](http://www.voitco.com)

The information contained herein has been obtained from sources we deem reliable. While we have no reason to doubt its accuracy, we do not guarantee it. ©2013 Voit Real Estate Services, Inc. All Rights Reserved. Real People. Real Solutions.® is a registered trademark of Voit Real Estate Services.

**CORFAC**  
International

# Voit

REAL ESTATE SERVICES