

# MULTI-USE DEVELOPMENT AT I-43 INTERCHANGE

## 5295 S MOORLAND RD | NEW BERLIN, WISCONSIN



### BUILDING TYPE:

Hotel, Bank, Restaurant, Multi-Tenant Options

### AVAILABLE SPACE:

A variety of sizes and formats available

### TRAFFIC COUNTS:

62,700 on I-43; 22,600 on Moorland Road

### SIGNAGE:

Maximum allowable signage per City ordinance

### SALE PRICE / LEASE RATE:

Contact Broker

### RETAIL / RESTAURANT / BANK / HOSPITALITY

### PROPERTY HIGHLIGHTS:

- Planned development at I-43 & Moorland Road
- At this interchange are developments including Target, Costco, Marcus Cinema, Texas Roadhouse, Michaels, Panera, Holiday Inn & LaQuinta
- Interstate visibility, easy access

### Demographics

	1 Mile	3 Miles	5 Miles
Population	1,692	42,290	107,856
Households	671	16,802	45,403
Median HH Inc.	\$83,678	\$90,339	\$76,392
Employees	4,669	18,699	56,633

Source: STDB.COM/ESRI

### For information, please contact:

**BRIAN J VANEVENHOVEN, CRRP**

414.908.9160

[brian.vanevenhoven@ngkf.com](mailto:brian.vanevenhoven@ngkf.com)

**KEVIN J SCHMOLDT**

414.908.9164

[kevin.schmoldt@ngkf.com](mailto:kevin.schmoldt@ngkf.com)



[ngkf.com](http://ngkf.com)

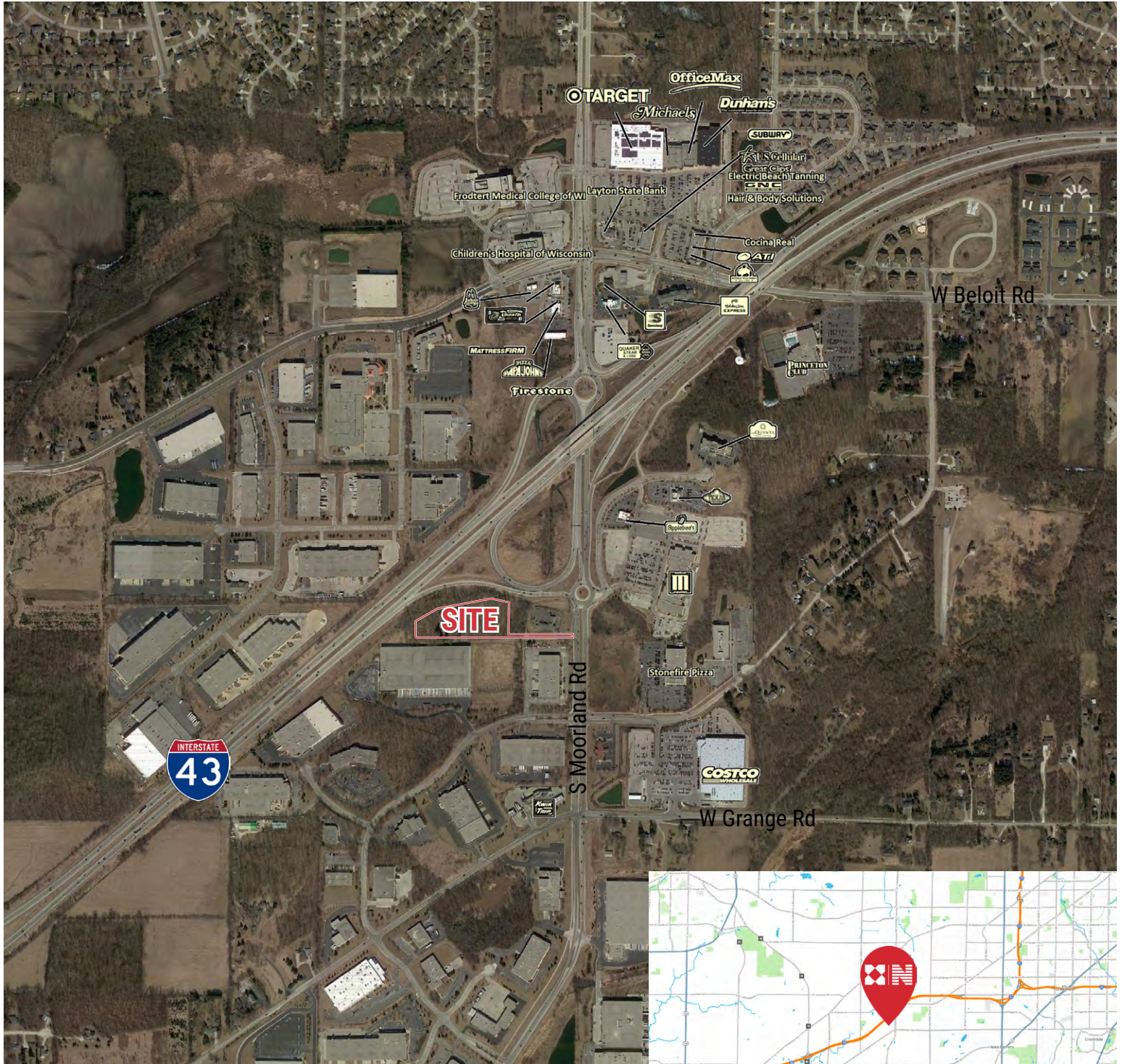
757 N Broadway, Suite 700, Milwaukee, WI 53202

The information contained herein has been obtained from sources deemed reliable but has not been verified and no guarantee, warranty or representation, either express or implied, is made with respect to such information. Terms of sale or lease and availability are subject to change or withdrawal without notice.



**MIXED-USE OPPORTUNITY**

I-43 & MOORLAND ROAD  
NEW BERLIN, WISCONSIN



For information, please contact:

**BRIAN J VANEVENHOVEN, CRPP**

414.908.9160

[brian.vanevenhoven@ngkf.com](mailto:brian.vanevenhoven@ngkf.com)

**KEVIN J SCHMOLDT**

414.908.9164

[kevin.schmoldt@ngkf.com](mailto:kevin.schmoldt@ngkf.com)

The information contained herein has been obtained from sources deemed reliable but has not been verified and no guarantee, warranty or representation, either express or implied, is made with respect to such information. Terms of sale or lease and availability are subject to change or withdrawal without notice.



# STATE OF WISCONSIN BROKER DISCLOSURE TO NON-RESIDENTIAL CUSTOMERS

Prior to negotiating on your behalf the brokerage firm, or an agent associated with the firm, must provide you the following disclosure statement.

## **BROKER DISCLOSURE TO CUSTOMERS**

You are the customer of the brokerage firm (hereinafter Firm). The Firm is either an agent of another party in the transaction or a subagent of another firm that is the agent of another party in the transaction. A broker or a salesperson acting on behalf of the Firm, may provide brokerage services to you. Whenever the Firm is providing brokerage services to you, the Firm and its brokers and salespersons (hereinafter Agents) owe you, the customer, the following duties:

- The duty to provide brokerage services to you fairly and honestly.
- The duty to exercise reasonable skill and care in providing brokerage services to you.
- The duty to provide you with accurate information about market conditions within a reasonable time if you request it, unless disclosure of the information is prohibited by law.
- The duty to disclose to you in writing certain Material Adverse Facts about a property, unless disclosure of the information is prohibited by law (see "Definition of Material Adverse Facts" below).
- The duty to protect your confidentiality. Unless the law requires it, the Firm and its Agents will not disclose your confidential information or the confidential information of other parties (see "Confidentiality Notice To Customers" below).
- The duty to safeguard trust funds and other property held by the Firm or its Agents.
- The duty, when negotiating, to present contract proposals in an objective and unbiased manner and disclose the advantages and disadvantages of the proposals.

Please review this information carefully. An agent of the Firm can answer your questions about brokerage services, but if you need legal advice, tax advice, or a professional property inspection, contact an attorney, tax advisor, or property inspector.

This disclosure is required by section 452.135 of the Wisconsin statutes and is for information only. It is a plain-language summary of a broker's duties to a customer under section 452.133 (1) of the Wisconsin statutes.

## **CONFIDENTIALITY NOTICE TO CUSTOMERS**

The Firm and its Agents will keep confidential any information given to the Firm or its Agents in confidence, or any information obtained by the Firm or its Agents that a reasonable person would want to be kept confidential, unless the information must be disclosed by law or you authorize the Firm to disclose particular information. The Firm and its Agents shall continue to keep the information confidential after the Firm is no longer providing brokerage services to you.

## **Wisconsin law requires all real estate licensees to give the following information about brokerage services to prospective customers.**

The following information is required to be disclosed by law:

1. Material Adverse Facts, as defined in section 452.01 (5g) of the Wisconsin statutes (see "definition of material adverse facts" below).
2. Any facts known by the Firm or its Agents that contradict any information included in a written inspection report on the property or real estate that is the subject of the transaction.

To ensure that the Firm and its Agents is aware of what specific information you consider confidential, you may list that information below or provide that information to the Firm or its Agents by other means. At a later time, you may also provide the Firm or its Agents with other information that you consider to be confidential.

CONFIDENTIAL INFORMATION: \_\_\_\_\_

\_\_\_\_\_

NON-CONFIDENTIAL INFORMATION (The following information may be disclosed by the Firm and its Agents): \_\_\_\_\_

\_\_\_\_\_

(INSERT INFORMATION YOU AUTHORIZE TO BE DISCLOSED SUCH AS FINANCIAL QUALIFICATION INFORMATION)

## **SEX OFFENDER REGISTRY**

Notice: You may obtain information about the sex offender registry and persons registered with the registry by contacting the Wisconsin Department of Corrections on the Internet at <http://www.doc.wi.gov/> or by phone at 608-240-5830.

## **DEFINITION OF MATERIAL ADVERSE FACTS**

A "Material Adverse Fact" is defined in Wis. Stat. 452.01 (5g) as an adverse fact that a party indicates is of such significance, or that is generally recognized by a competent licensee as being of such significance to a reasonable party, that it affects or would affect the party's decision to enter into a contract or agreement concerning a transaction or affects or would affect the party's decision about the terms of such a contract or agreement.

An "Adverse Fact" is defined in Wis. Stat. 452.01 (1e) as a condition or occurrence that a competent licensee generally recognizes will significantly and adversely affect the value of the property, significantly reduce the structural integrity of improvements to real estate, or present a significant health risk to occupants of the property; or information that indicates that a party to a transaction is not able to or does not intend to meet his or her obligations under a contract or agreement made concerning the transaction.

No representation is made as to the legal validity of any provision or the adequacy of any provision on any specific transaction.