

NOW LEASING

TREMAINE BOYD

109 S. Boyd Street, Winter Garden, FL 34787

**300' TO
PLANT ST**



WINTER GARDEN'S NEWEST HOT SPOT IS UNDER CONSTRUCTION!

The Historic Downtown Winter Garden, listed on the National Registry of Historic Places, is a favorite destination for West Orange residents and those traveling the award-winning West Orange Trail which will soon be part of the 250 mile Coast to Coast (C2C) Trail. Over a million people use this trail every year.

Winter Garden's proximity to Orlando and the theme parks has made it an ideal spot for growth. Winter Garden has grown into the commercial and cultural capital of West Orange County with regional amenities such as the Garden Theatre, several Museums, a new Art Center and the Downtown Pavilion, which is home to the Winter Garden Farmers Market.

BUILDING DETAILS



AVAILABILITY

1,190 – 6,690 SF

LEASE RATE

\$28 - \$30 / SF

PARKING

527 Adjacent Garage Spaces + Street Parking

DELIVERY

1st Quarter 2019



PROPERTY DETAILS

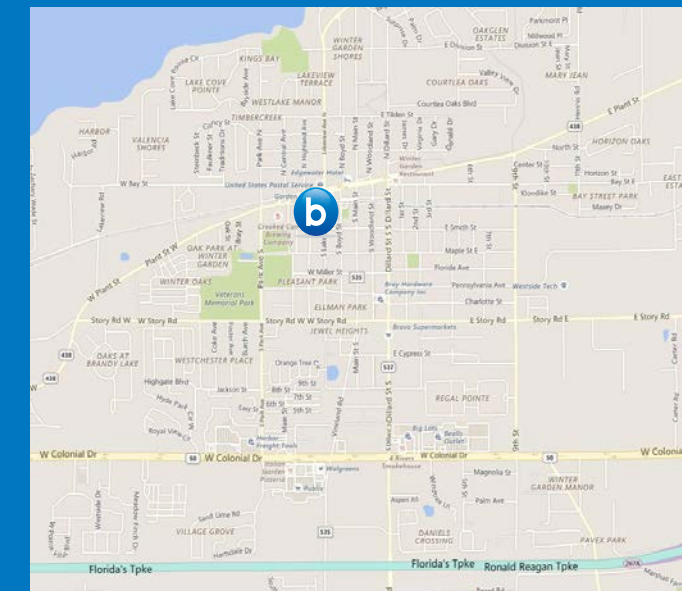
- ▶ The ground floor has flexibility to be divided as needed by individual office and/or retail tenants.
- ▶ Beautiful street side dining, abundant parking and proximity to City Hall, Downtown Splashpad, West Orange Trail, the Farmer's Market and numerous City Events.
- ▶ The second and third floors will include 22 residential apartments.

PROPERTY DESCRIPTION

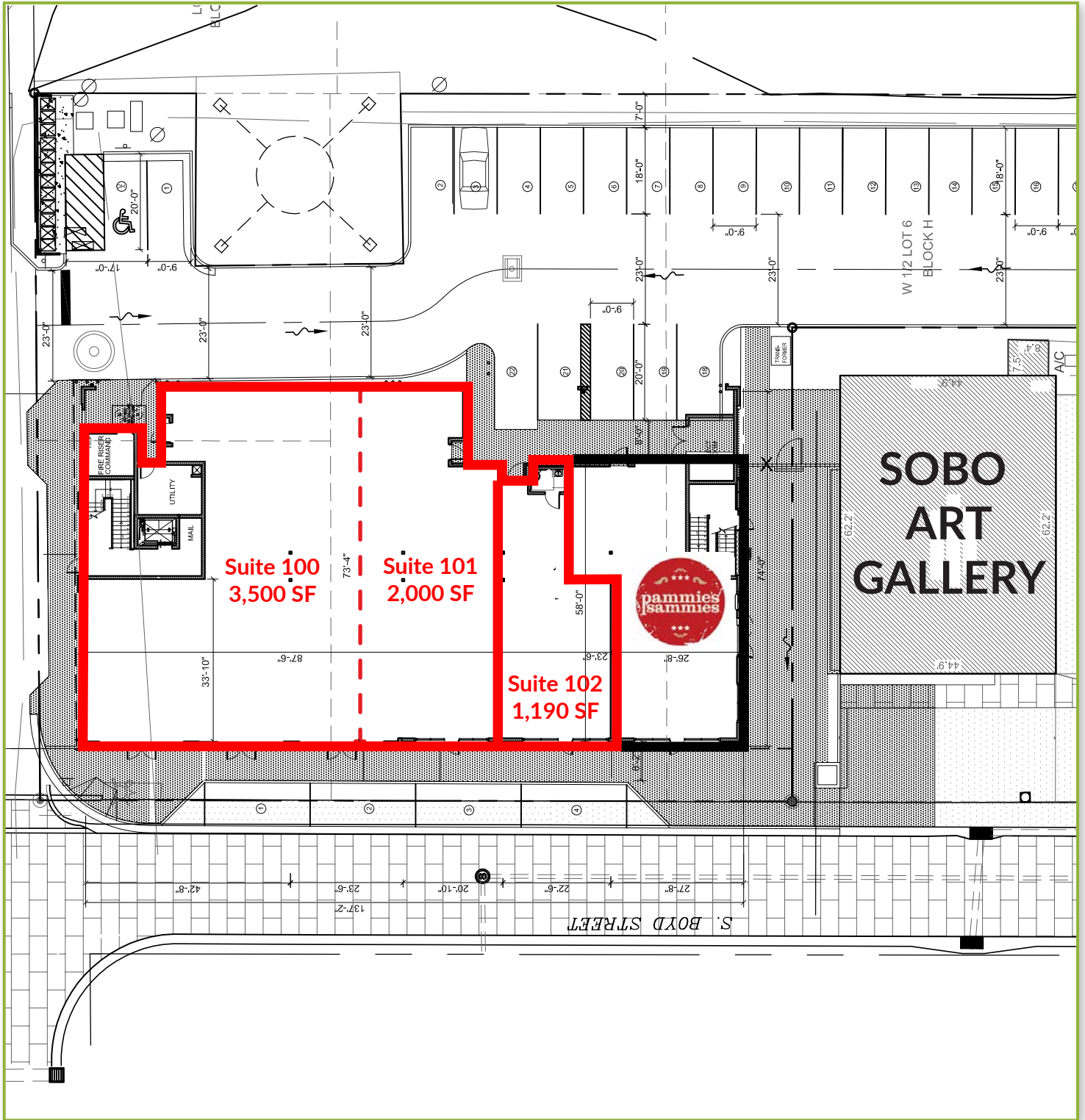
The TREMAINE BOYD development is a three-story mixed use urban infill project that will be transformative for downtown Winter Garden, Florida. Tremaine Boyd will introduce more than 8,000 square feet of new restaurant/office/retail space and 22 residential units into the core of the City.

The development is located at the Southeast corner of Tremaine Street and South Boyd Street; neighboring the Sobo Art Gallery and adjacent to the 527 space, free public parking garage.

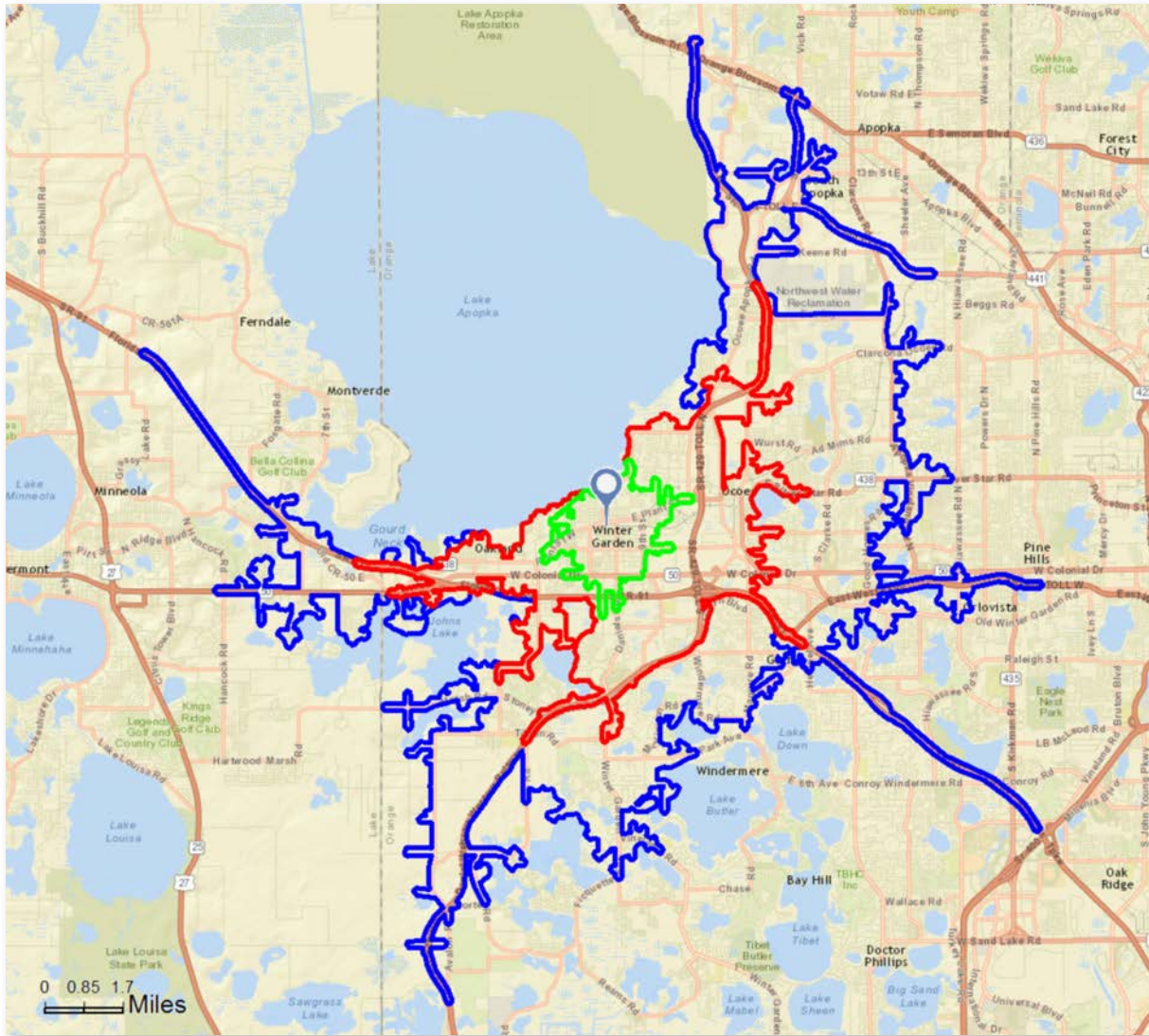
More information is available online at www.tremaineboyd.com.



SITE PLAN



DEMOGRAPHICS



DEMOGRAPHICS	5 Min. Drive Time	10 Min. Drive Time	15 Min. Drive Time
TOTAL POPULATION	44,069	174,452	442,489
TOTAL HOUSEHOLDS	15,400	59,924	159,184
MEDIAN AGE	35.9	35.7	35.6
MEDIAN HOUSEHOLD INCOME	\$65,148	\$68,271	\$61,308
AVERAGE HOUSEHOLD INCOME	\$78,741	\$83,996	\$75,290