

Boulder Park Drive

Atlanta, Georgia 30331 | Fulton County

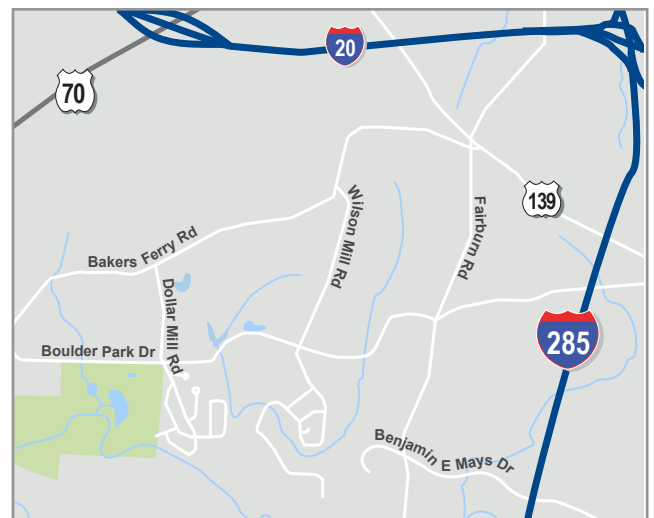


RESIDENTIAL DEVELOPMENT SITE FOR SALE

LOT AREA 52± Acres
ASKING PRICE \$2,000,000

HIGHLIGHTS

- 52 Acre Estate site/subdivision
- Gently rolling topo
- Three lakes on property
- Current zoning R-4
- Site plan for 116 single family homes
- Phase1 and seismic survey available
- All utilities including sewer



ROOSEVELT BROWN
770.913.3917 | rbrown@ackermanco.net

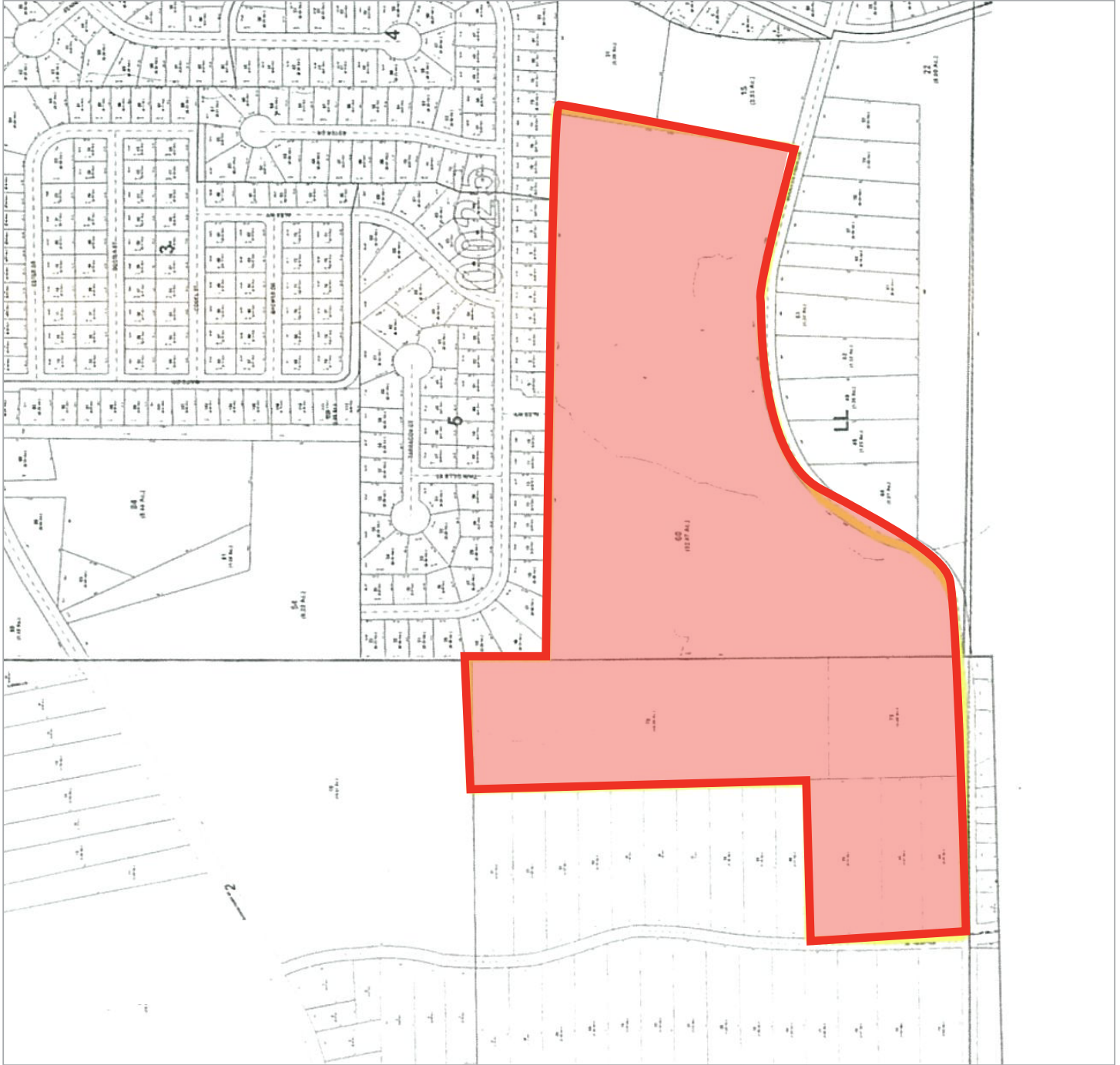
Ackerman & Co.

Boulder Park Drive

Residential Development Site for Sale: 52± Acres

Atlanta, GA 30331
Fulton County

TAX PLAT



ROOSEVELT BROWN
770.913.3917 | rbrown@ackermanco.net

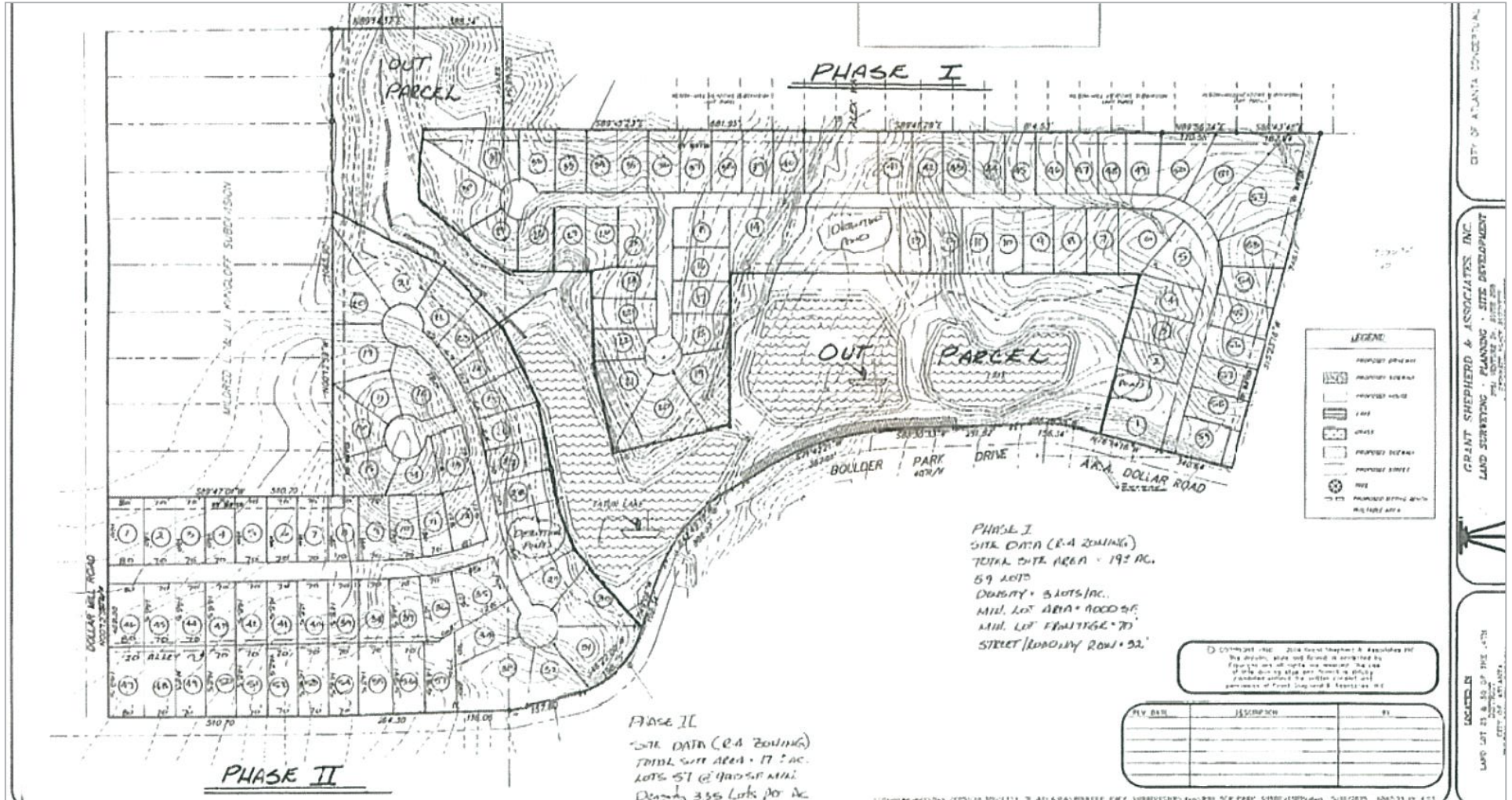
Ackerman & Co.

Boulder Park Drive

Residential Development Site for Sale: 52± Acres

Atlanta, GA 30331
Fulton County

PROPOSED SITE PLAN



ROOSEVELT BROWN
770.913.3917 | rbrown@ackermanco.net

Ackerman & Co.