



For Sale

Location

2499 and Lake Flower Dr
Flower Mound, TX
75028

Net Space

6.0 acres North tract
4.36 acres Center tract
6.5 acres South tract

Price

\$10 per sq - north tract
\$12 per sq ft - center tract
\$12 per sq ft - south tract

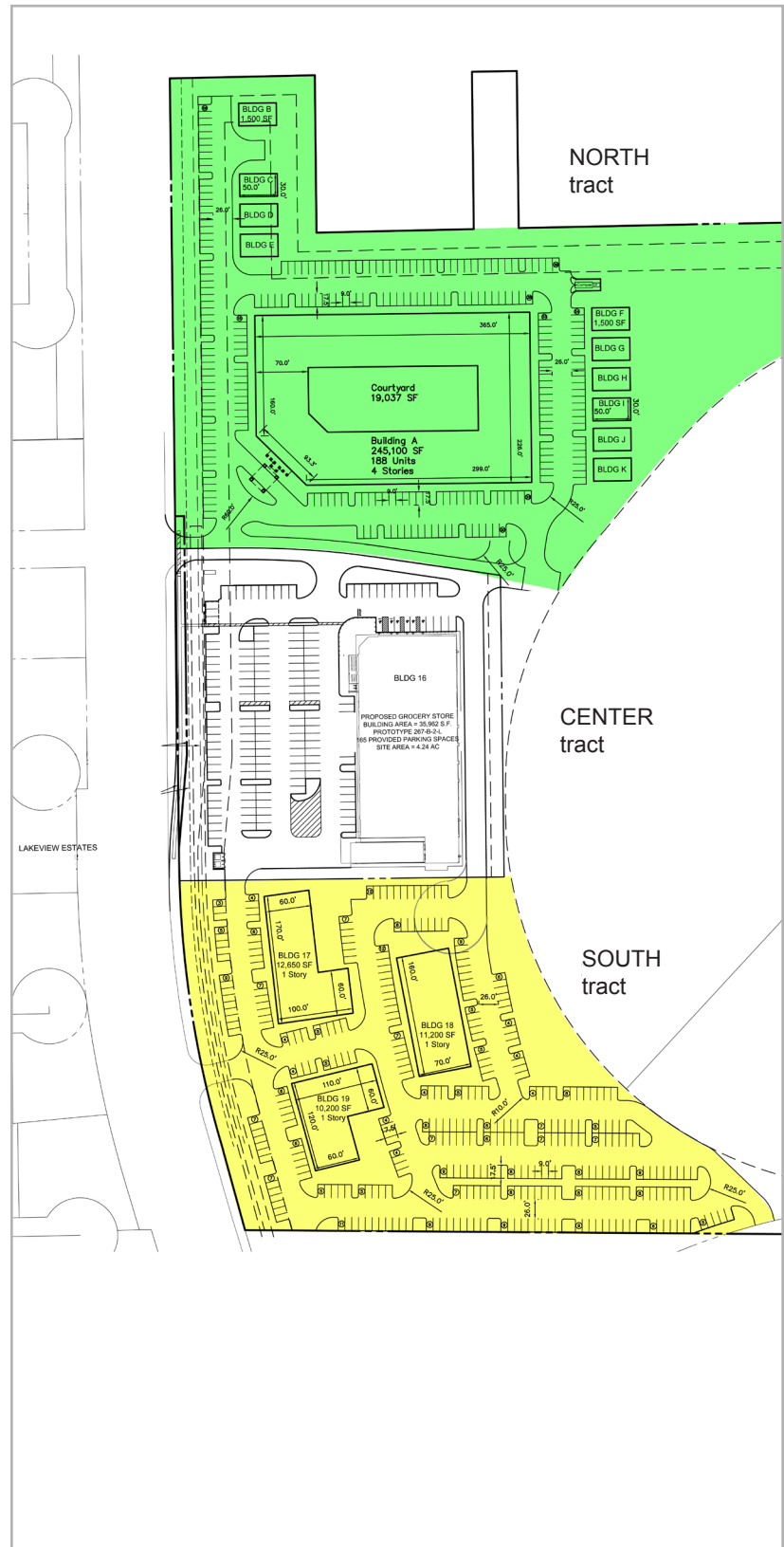
Features

- +/- 2000 ft of FM2499 Frontage
- Zoning and Master Plan currently under review
- Ideally located in Flower Mound, with instant accessibility to the entire Metroplex.

Contact

Todd Weaver
3505 Yucca Drive, Suite 100
Flower Mound, Texas 75028

todd@weavercommercial.com
469-635-2833 Office
469-635-2849 Fax



This information is believed to be accurate, but no representation or warranty, express or implied, as to its accuracy or completeness is made by Weaver Commercial Real Estate, Ltd. and/or its agents or any party. The presentation of this property is submitted subject to errors, omissions, change of price and prior sale or lease, or withdrawal from market without notice.