

4700 MONTGOMERY BLVD



For Lease: 1,031^{RSF} to Full Floor 5,486^{RSF}
PRICE REDUCED TO \$17.00 FULL SERVICE

First Class Build Out

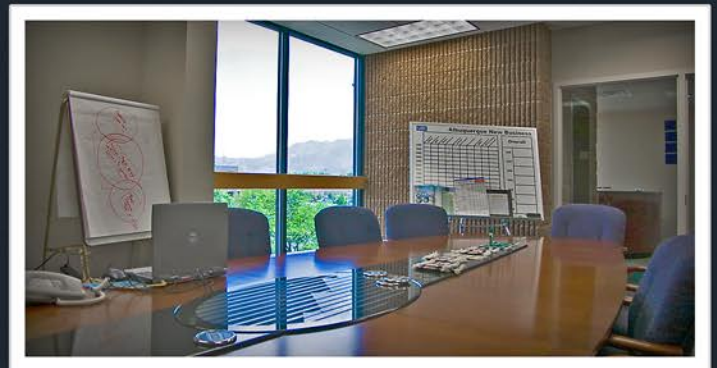
Great Access via Signalized Montgomery/
Monroe Intersection

Across from Lovelace Women's Hospital

Monument & Building Signage Available

Reserved and Covered Parking

Abundant Restaurants Nearby



Owner, Scott Throckmorton, SIOR
Broker: Scott@argusinvestmentrealty.com
Phone: (505) 855-7602

www.argusinvestmentrealty.com



Scan this code to download
this flyer to your mobile device.

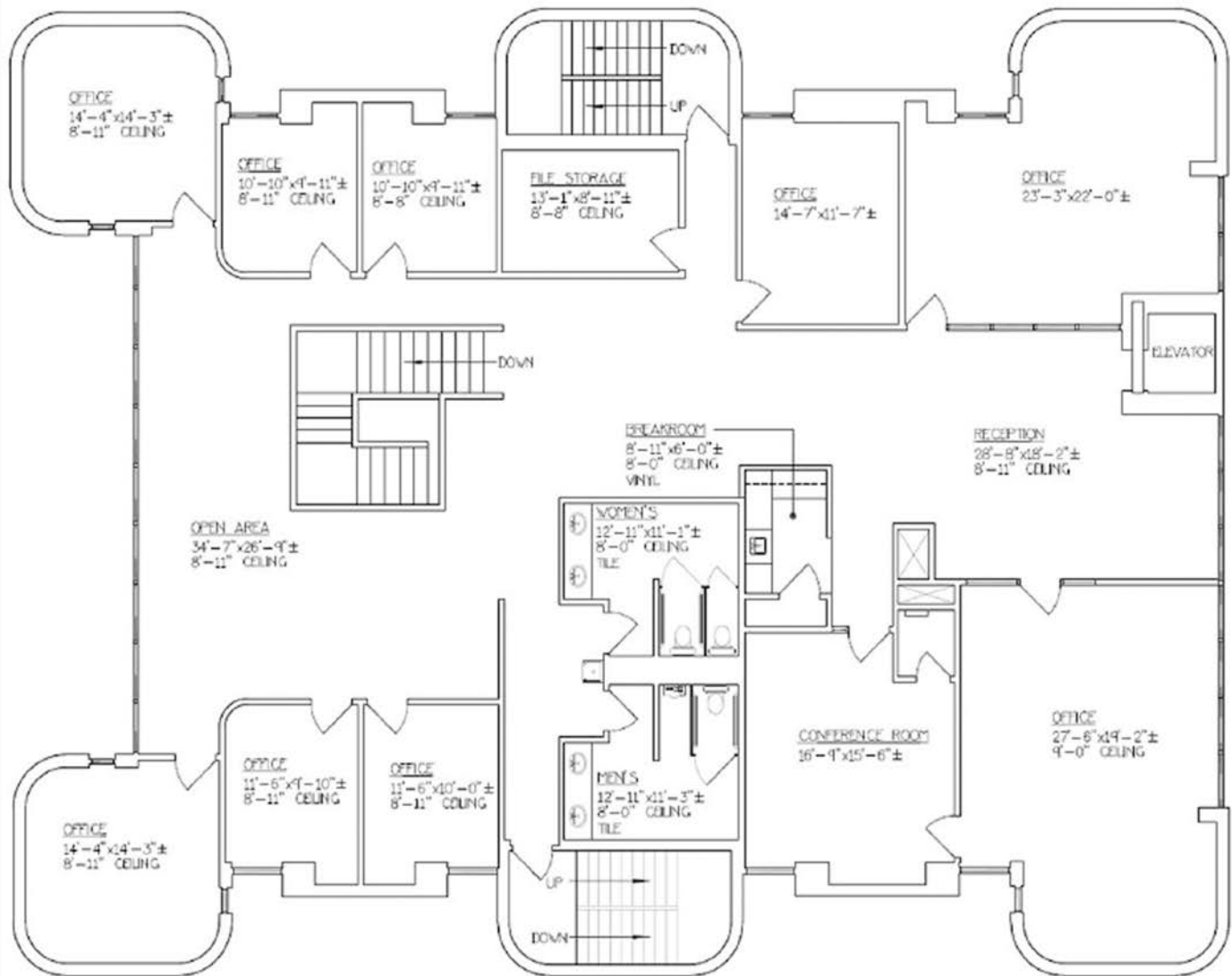
4700 MONTGOMERY BLVD



Owner, Scott Throckmorton, SIOR
 Broker: Scott@argusinvestmentrealty.com
 Phone: (505) 855-7602
www.argusinvestmentrealty.com



SECOND FLOOR - 5,058 SF



Owner, **Scott Throckmorton, SIOR**

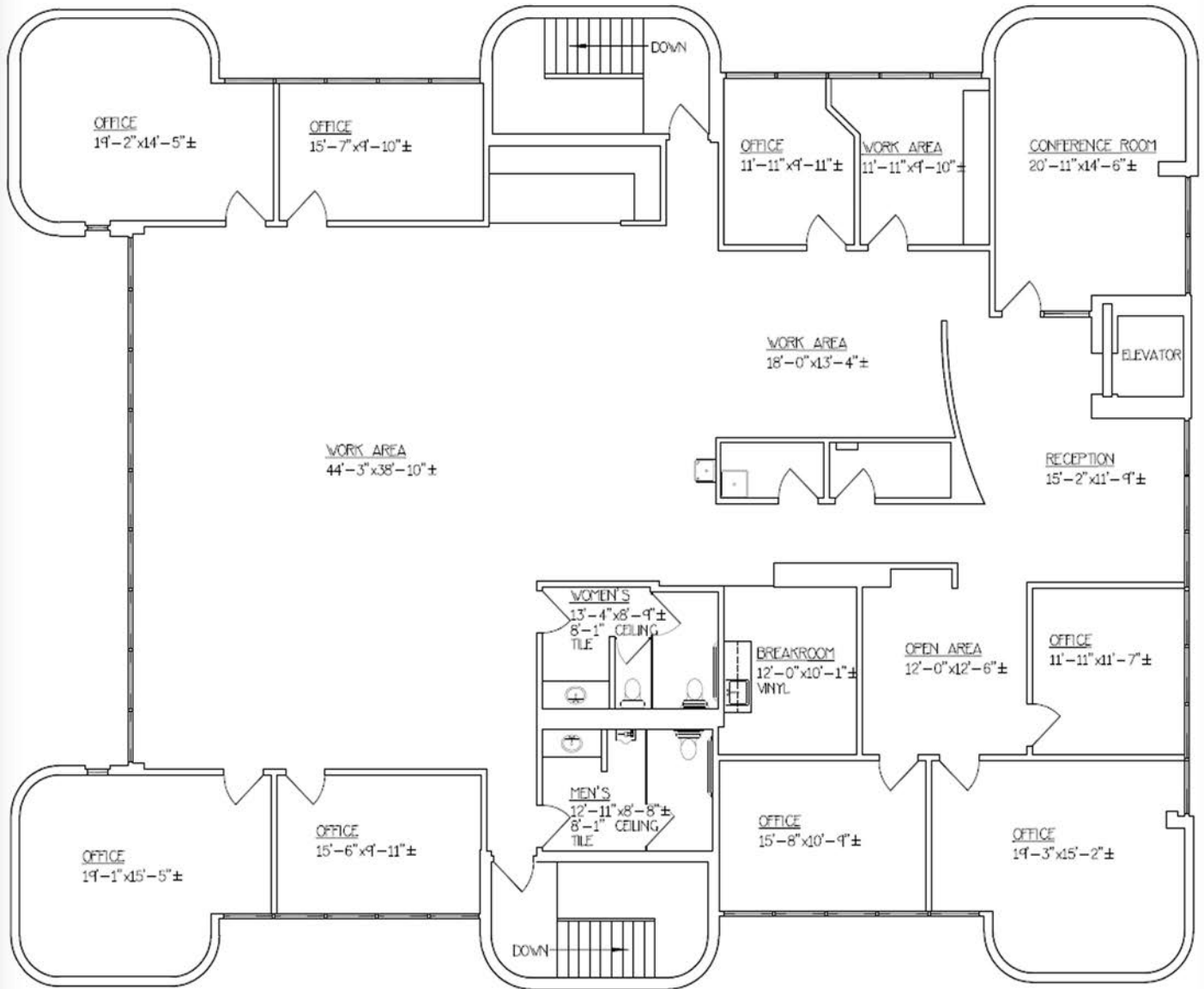
Broker: Scott@argusinvestmentrealty.com

Phone: (505) 855-7602

www.argusinvestmentrealty.com



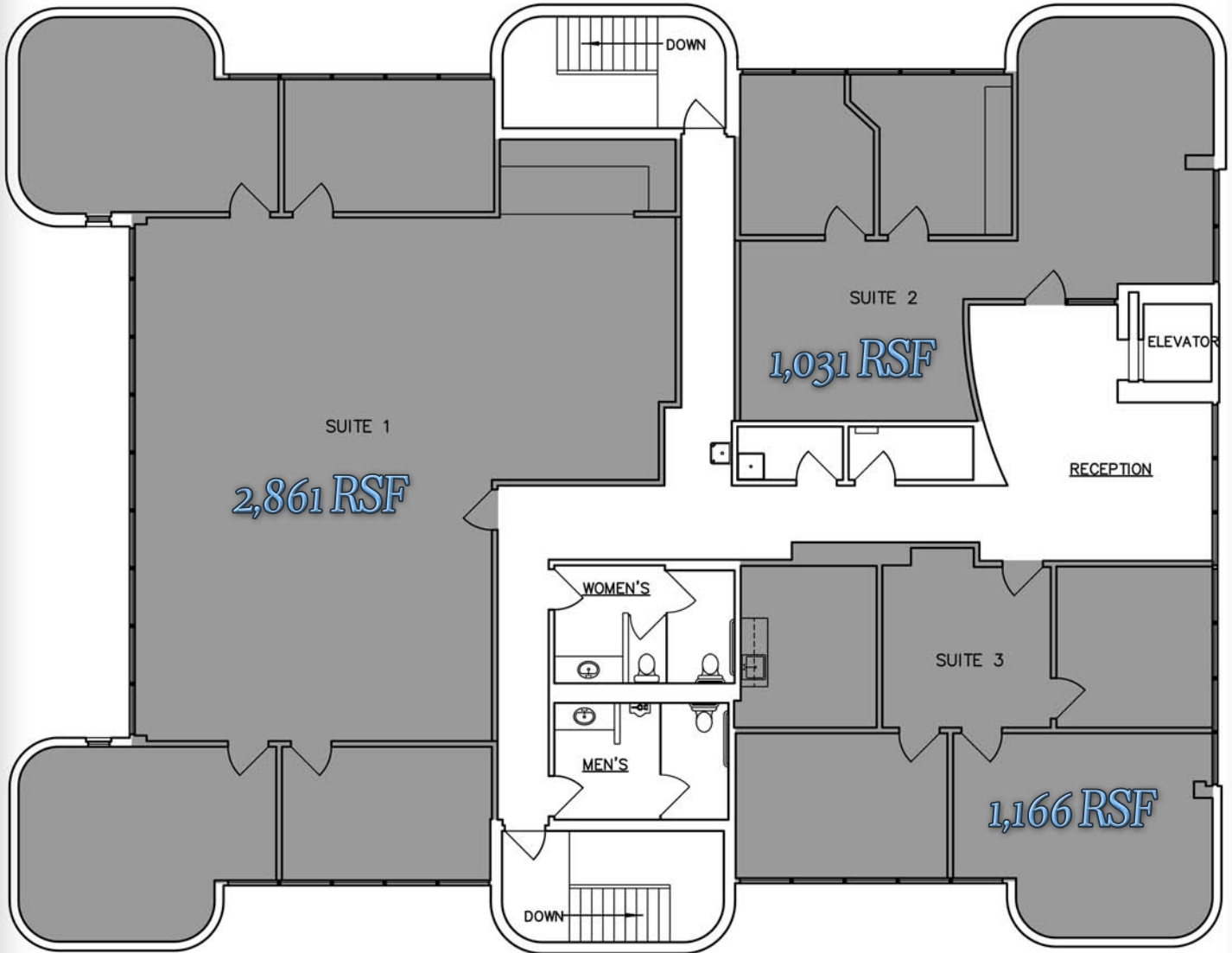
THIRD FLOOR - 5,486 SF



Owner, Scott Throckmorton, SIOR
Broker: Scott@argusinvestmentrealty.com
Phone: (505) 855-7602
www.argusinvestmentrealty.com



THIRD FLOOR



Owner, **Scott Throckmorton, SIOR**
Broker: Scott@argusinvestmentrealty.com
Phone: (505) 855-7602

www.argusinvestmentrealty.com



4700 MONTGOMERY BLVD



Building & Monument Signage

Montgomery: 46,700 CPD

Jefferson Rd: 15,100 CPD

San Mateo Blvd: 39,100 CPD

Located on the SEC of
Montgomery Blvd & Monroe St

Owner, Scott Throckmorton, SIOR

Broker: Scott@argusinvestmentrealty.com
Phone: (505) 855-7602

www.argusinvestmentrealty.com

