

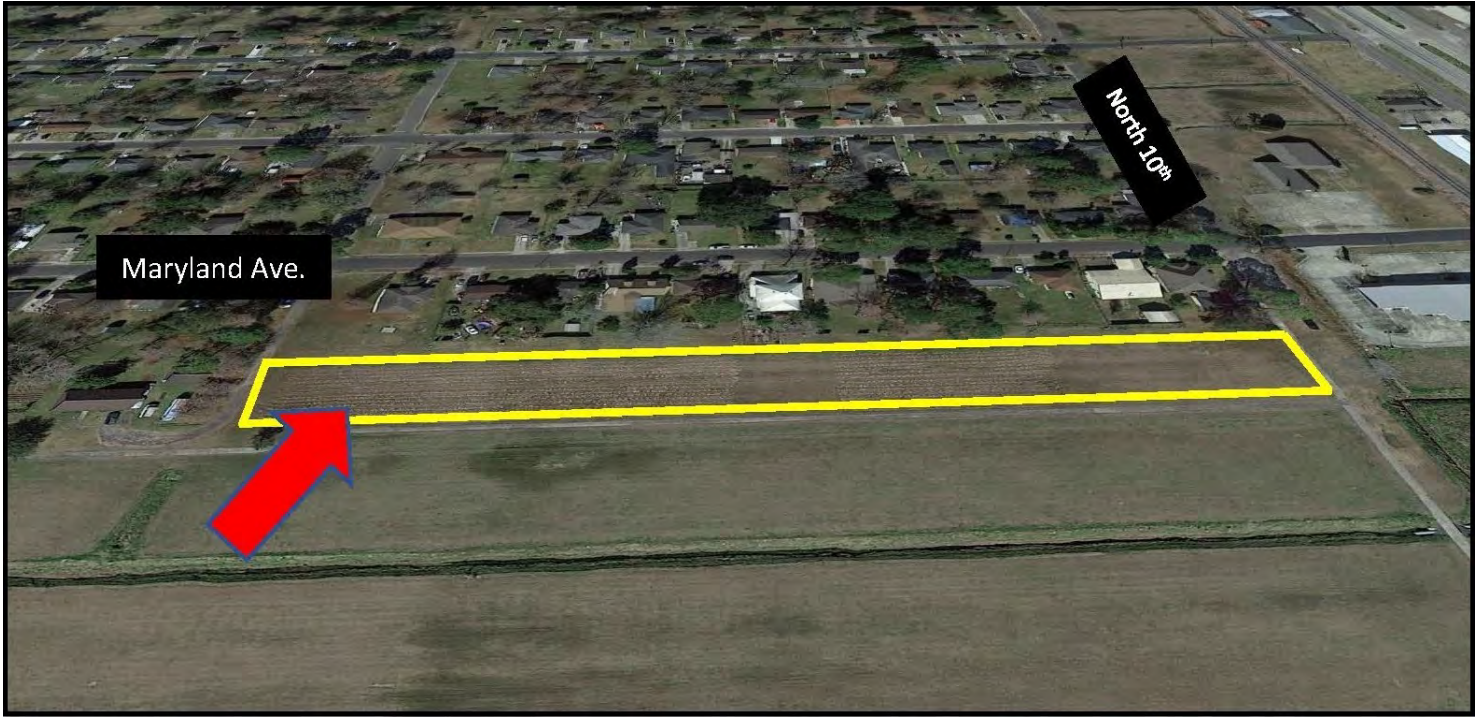


FOR SALE

RESIDENTIAL DEVELOPMENT LAND

PORT ALLEN, LA 70767

2+ ACRES

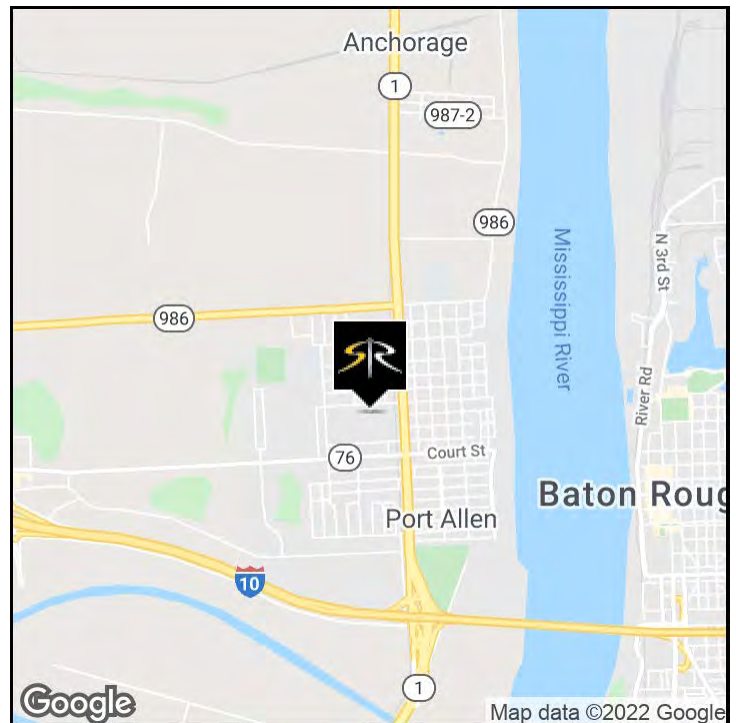


OFFERING SUMMARY

Sale Price:	\$180,000.00
Lot Size:	2+ Acres
Zoning:	R-1

PROPERTY HIGHLIGHTS

- 2+ acres available for development
- Located just off of N. Alexander Ave. (Hwy. 1)
- Near downtown Port Allen
- Ideal for residential development
- Zoning: R-1 / Single Family



LARRY DIETZ, CCIM

Associate Broker
225.315.7686
larry@sr-cre.com

SAURAGE ROTENBERG COMMERCIAL REAL ESTATE, LLC

5135 Bluebonnet Boulevard
Baton Rouge, LA 70809
225.766.0000 | sauragerotenberg.com



FOR SALE

RESIDENTIAL DEVELOPMENT LAND

PORT ALLEN, LA 70767

2+ ACRES



LARRY DIETZ, CCIM

Associate Broker
225.315.7686
larry@sr-cre.com

SAURAGE ROTENBERG COMMERCIAL REAL ESTATE, LLC

5135 Bluebonnet Boulevard
Baton Rouge, LA 70809
225.766.0000 | sauragerotenberg.com

The information contained herein has either been given to us by property owners or is from sources deemed reliable and is believed to be correct, it is not in any way warranted or guaranteed by Saurage Rotenberg Commercial Real Estate. This information is submitted subject to errors, omissions, changes in price, rental or other conditions, withdrawal without notice, and to any special listing conditions imposed by the principals. Licensed in Louisiana & Mississippi.px

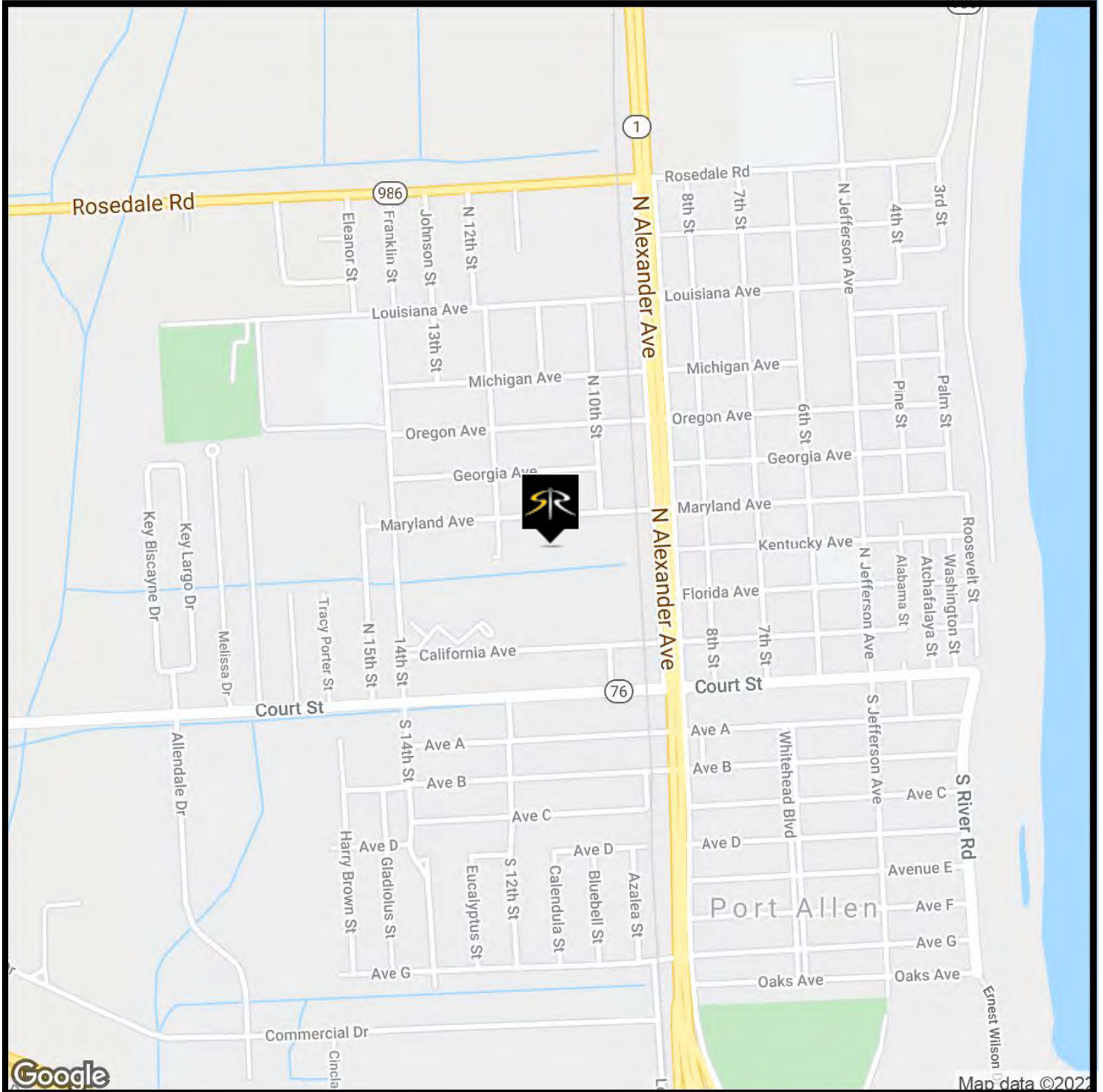


FOR SALE

RESIDENTIAL DEVELOPMENT LAND

PORT ALLEN, LA 70767

2+ ACRES



LARRY DIETZ, CCIM

Associate Broker

225.315.7686

larry@sr-cre.com

SAURAGE ROTENBERG COMMERCIAL REAL ESTATE, LLC

5135 Bluebonnet Boulevard

Baton Rouge, LA 70809

225.766.0000 | sauragerotenberg.com

The information contained herein has either been given to us by property owners or is from sources deemed reliable and is believed to be correct, it is not in any way warranted or guaranteed by Saurage Rotenberg Commercial Real Estate. This information is submitted subject to errors, omissions, changes in price, rental or other conditions, withdrawal without notice, and to any special listing conditions imposed by the principals. Licensed in Louisiana & Mississippi.px