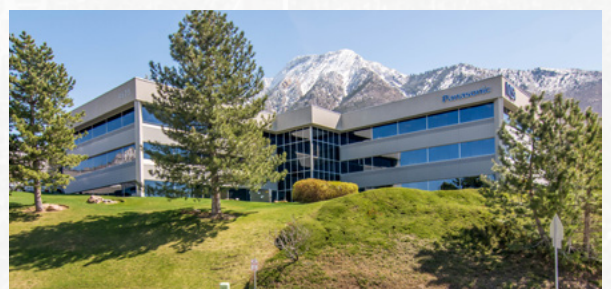
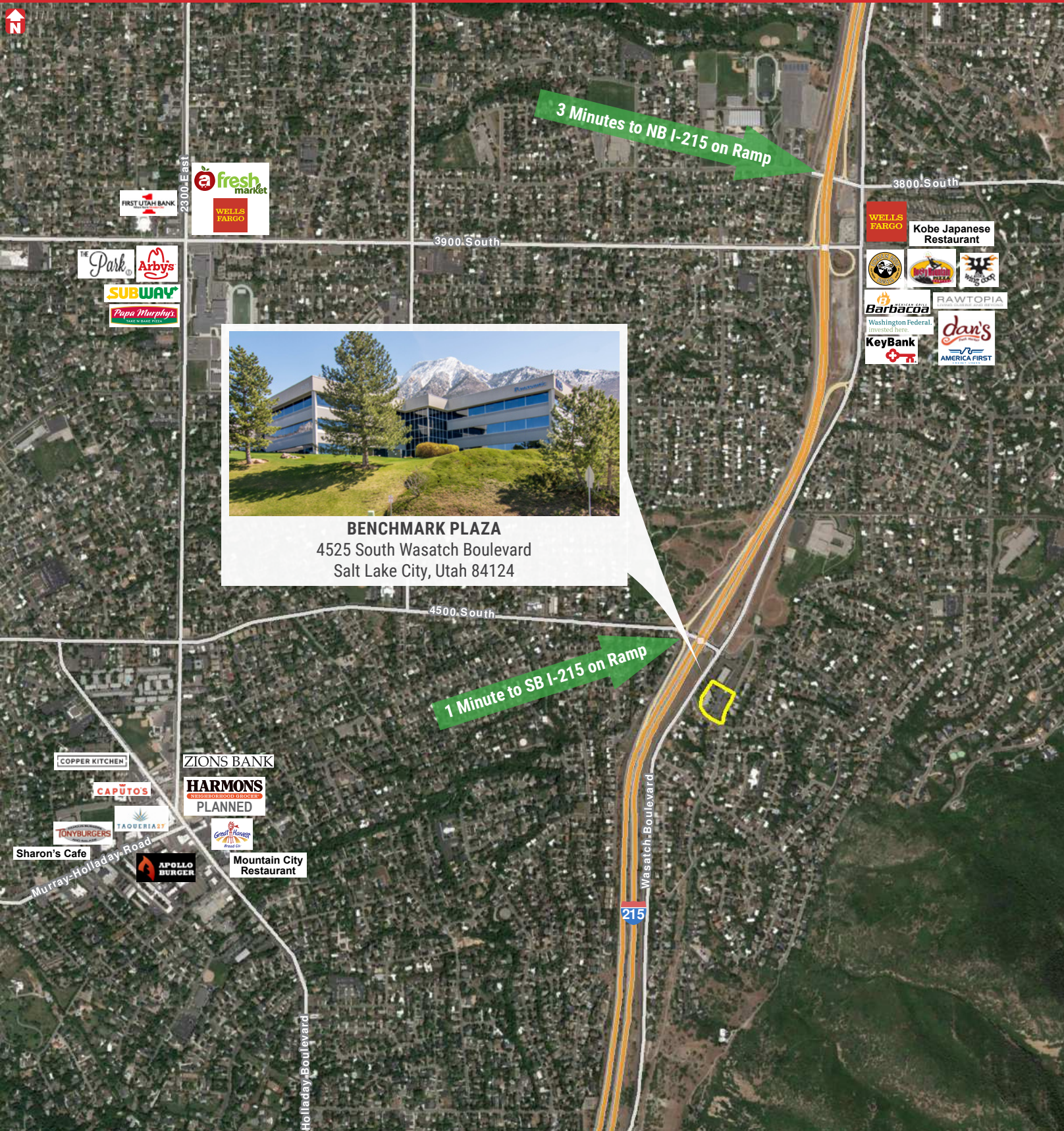


BENCHMARK PLAZA

4525 South Wasatch Boulevard, Salt Lake City, Utah 84124

BENCHMARK PLAZA

4525 South Wasatch Boulevard, Salt Lake City, Utah 84124



BENCHMARK PLAZA
4525 South Wasatch Boulevard
Salt Lake City, Utah 84124



**FOR
LEASE**
\$21.50 PRSF YEAR
FULL SERVICE

PROPERTY FEATURES

- 2,701 SF Available
- 2 Minutes To Freeway Access On I-215
- 4/1000 Parking Ratio
- Free On-Site Racquetball Court
- Space Available for Immediate Occupancy



FOR MORE
INFORMATION
CONTACT

CASEY MILLS, CCIM, SIOR
801.578.5556
casey.mills@ngkf.com

COLLIN PERKINS, MBA
801.578.5575
collin.perkins@ngkf.com

DEREK SAWAYA
801.746.4730
derek.sawaya@ngkf.com



376 East 400 South, Suite 120 | Salt Lake City, Utah 84111 | 801.578.5555 | www.ngacres.com

This document has been prepared by Newmark Knight Frank for advertising and general information purposes only. While the information contained herein has been obtained from what are believed to be reliable sources, the same has not been verified for accuracy or completeness. Newmark Knight Frank accepts no responsibility or liability for the information contained in this document. Any interested party should conduct an independent investigation to verify the information contained herein.



376 East 400 South, Suite 120 | Salt Lake City, Utah 84111 | 801.578.5555 | www.ngacres.com

This document has been prepared by Newmark Knight Frank for advertising and general information purposes only. While the information contained herein has been obtained from what are believed to be reliable sources, the same has not been verified for accuracy or completeness. Newmark Knight Frank accepts no responsibility or liability for the information contained in this document. Any interested party should conduct an independent investigation to verify the information contained herein.

BENCHMARK PLAZA

4525 South Wasatch Boulevard, Salt Lake City, Utah 84124

