

For Lease

TRINITY MILLS DISTRIBUTION CENTER #7 1440 Lemay Drive, Suite 104, Carrollton, TX

± 127,506 SF AVAILABLE



PROPERTY OVERVIEW

County: Dallas
Market: Northwest Dallas Ind.
Sub Market: N. Stemmons / Valwood Ind.

BUILDING DATA

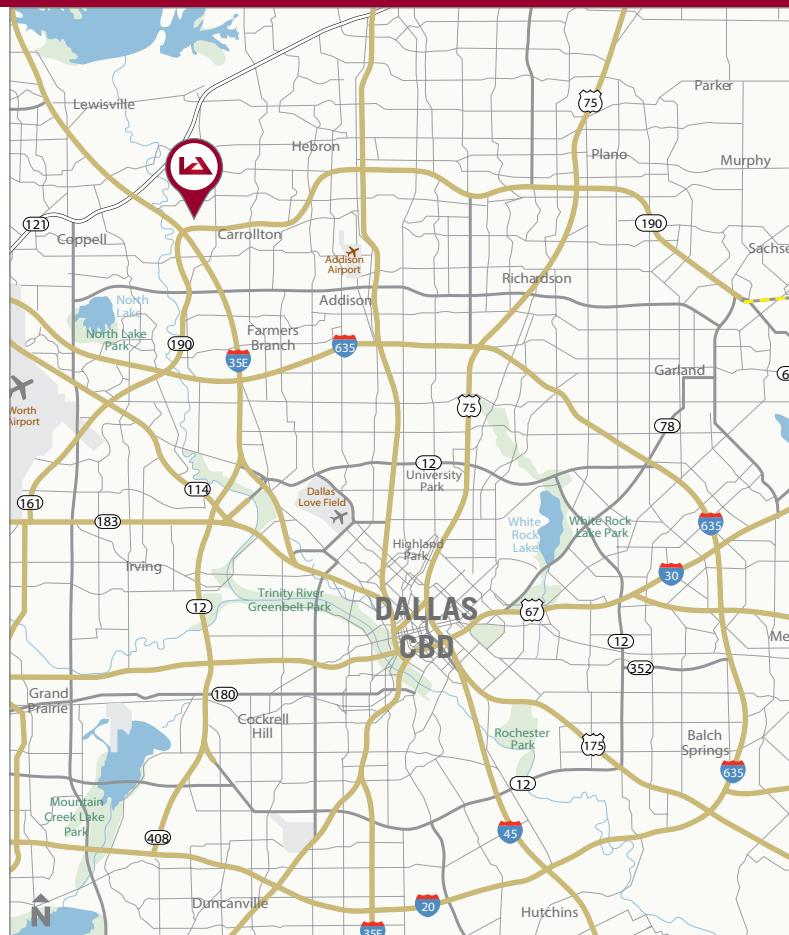
Total Building SF: 295,548 SF
Clear Height: 24'
Sprinklered: Fully Sprinklered

LISTING DATA

Available SF: 127,506 SF
Warehouse SF: 124,164 SF
Office SF: 3,342 SF
Loading Docks: 14 - 10' x 10' OH Doors (12 w/ Levelers)
6 - Proposed OH Doors
1 - 10' x 10' Ramp Door
1 - 10' x 14' OH Doors
13 - 10' x 10' Rail Doors

Comments:

Easy access to major thoroughfares
Front Load distribution with End Cap location
Approximately 136 Car Parks
Easy access onto Hwy 190 and I-35
Active Rail Served (DGNO)



For more information contact:

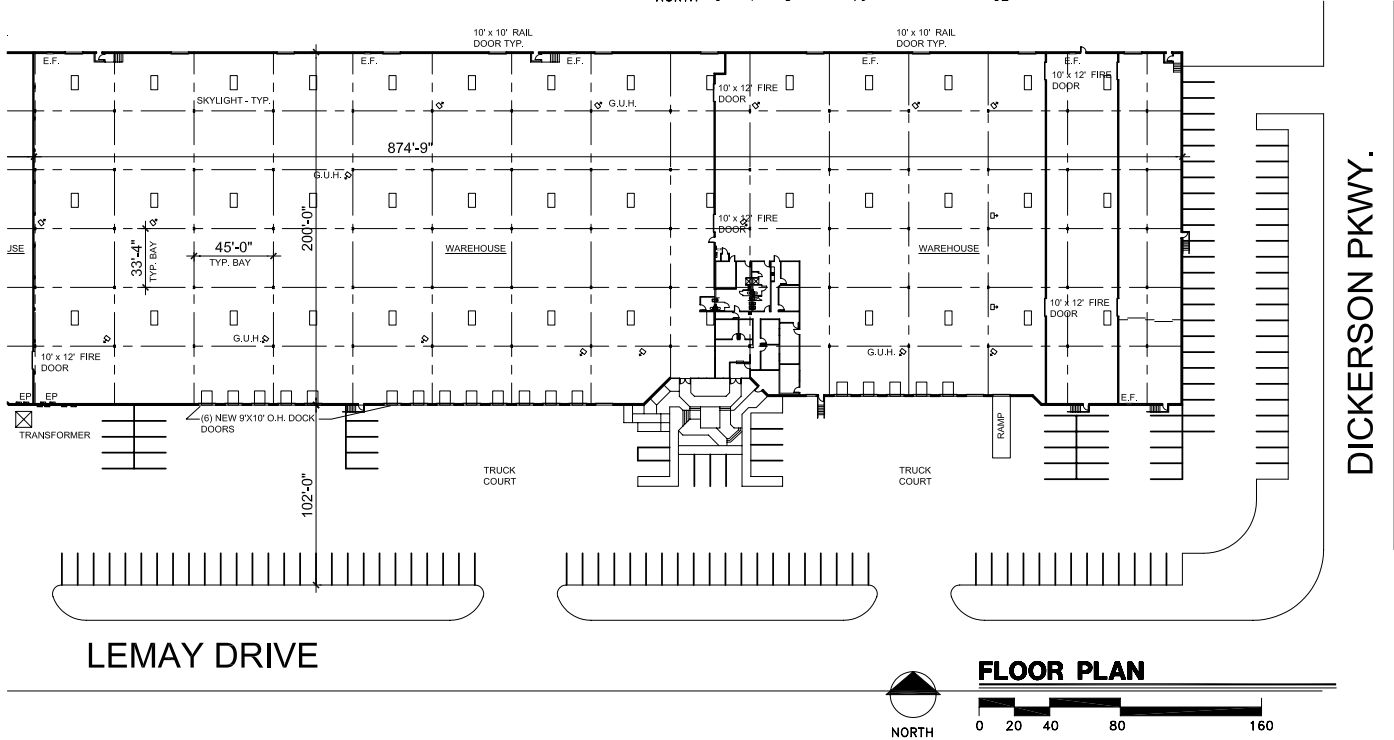
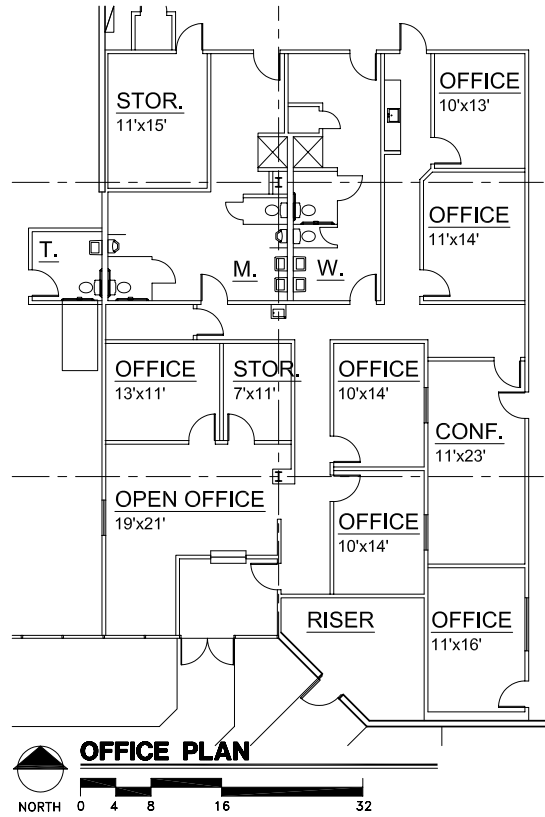
Adam Graham, SIOR, CCIM
agraham@lee-associates.com
D 972.934.4011

Nathan Denton, SIOR
ndenton@lee-associates.com
D 972.934.4015

For Lease

TRINITY MILLS DISTRIBUTION CENTER #7 1440 Lemay Drive, Suite 104, Carrollton, TX

± 127,506 SF AVAILABLE



The property information/detail contained herein has been obtained from other sources believed to be reliable, and DFW Lee & Associates, LLC has not independently verified such information's accuracy. DFW Lee & Associates, LLC makes no representations, guarantees, or express or implied warranties of any kind regarding the accuracy or completeness of the information provided herein nor the condition of the property and expressly disclaims all such warranties, including but not limited to the implied warranty of suitability and fitness for a particular purpose. Buyer/Lessee should perform its own due diligence regarding the accuracy of the information upon which buyer/lessee relies when entering into any transaction with seller/lessor herein. Furthermore, the information provided herein, including any sale/lease terms, are being provided subject to errors, omissions, changes of price or conditions, prior sale or lease, and withdrawal without notice.

For more information contact:

Adam Graham, SIOR, CCIM
agraham@lee-associates.com
D 972.934.4011

Nathan Denton, SIOR
ndenton@lee-associates.com
D 972.934.4015