

# **Gilco Realty LLC**

**1175 FINDLAY AVE  
BRONX NY 10456**



**Exclusive Agent  
Michele Lawson**

**Telephone      718 402 2500 Ext 2  
Email           Michele@GilcoRealty.com  
Website        <http://www.GilcoRealty.com>**

# **Gilco Realty LLC**

## **Location**

Concourse Village Section of Bronx

Located Between 167th & 168th St

14 Story Building

227 Apartments

Underground Parking Available

Five Blocks To B & D Subway Lines

Half a block to BX 35 Stop

Centrally located in a densely populated area

# **Gilco Realty LLC**

## **Available for Lease**

Spaces ranging from 360 to 3,500 Sq Ft

Ground Floor and Second Floor Spaces  
Available

Spaces perfect for Offices & Medical

Second Floor has Built Out Medical Space

Possibility to convert front spaces to retail

Two Elevators serving the 2nd Floor

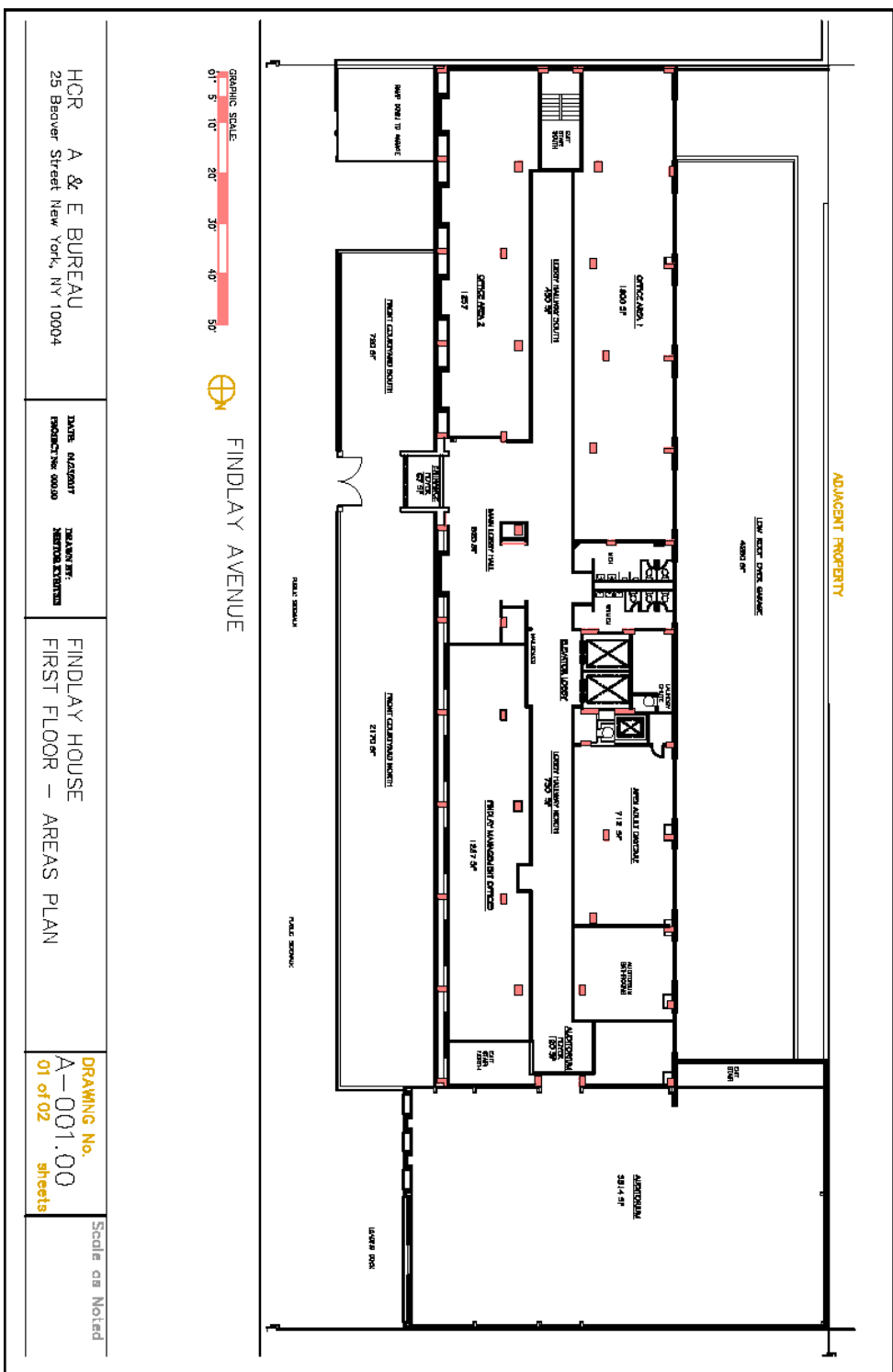
Full Kitchen Available on the Second Floor

### **ASKING RENT:**

**\$22 PSF For Ground Floor Space**

**\$17 PSF For Second Floor Space**

# First Floor



## Second Floor

