



LAND FOR SALE

# Retail Pads Fronting I-15

Exit 13 - Interstate 15, Washington Parkway & Sienna Hills Blvd.  
Washington, Utah 84737



1.03 - 5.58 ACRES

## Property Highlights

- Pad ready retail, hospitality and entertainment
- I-15 frontage, access & visibility
- Priced competitively
- Ready to build
- Highway commercial zoning
- Priced between \$12.00 - \$14.00 sq. ft.

**Tom Callister, SIOR**  
 Director  
 +1 435 986 4709  
 tom.callister@cushwake.com

**Travis J. Parry, SIOR, CCIM**  
 Senior Director  
 +1 435 986 4708  
 travis.parry@cushwake.com

2 West St. George Blvd, Suite 10  
 St. George, Utah 84770  
 Main +1 435 673 7111  
 Fax +1 435 673 7153  
 cushmanwakefield.com

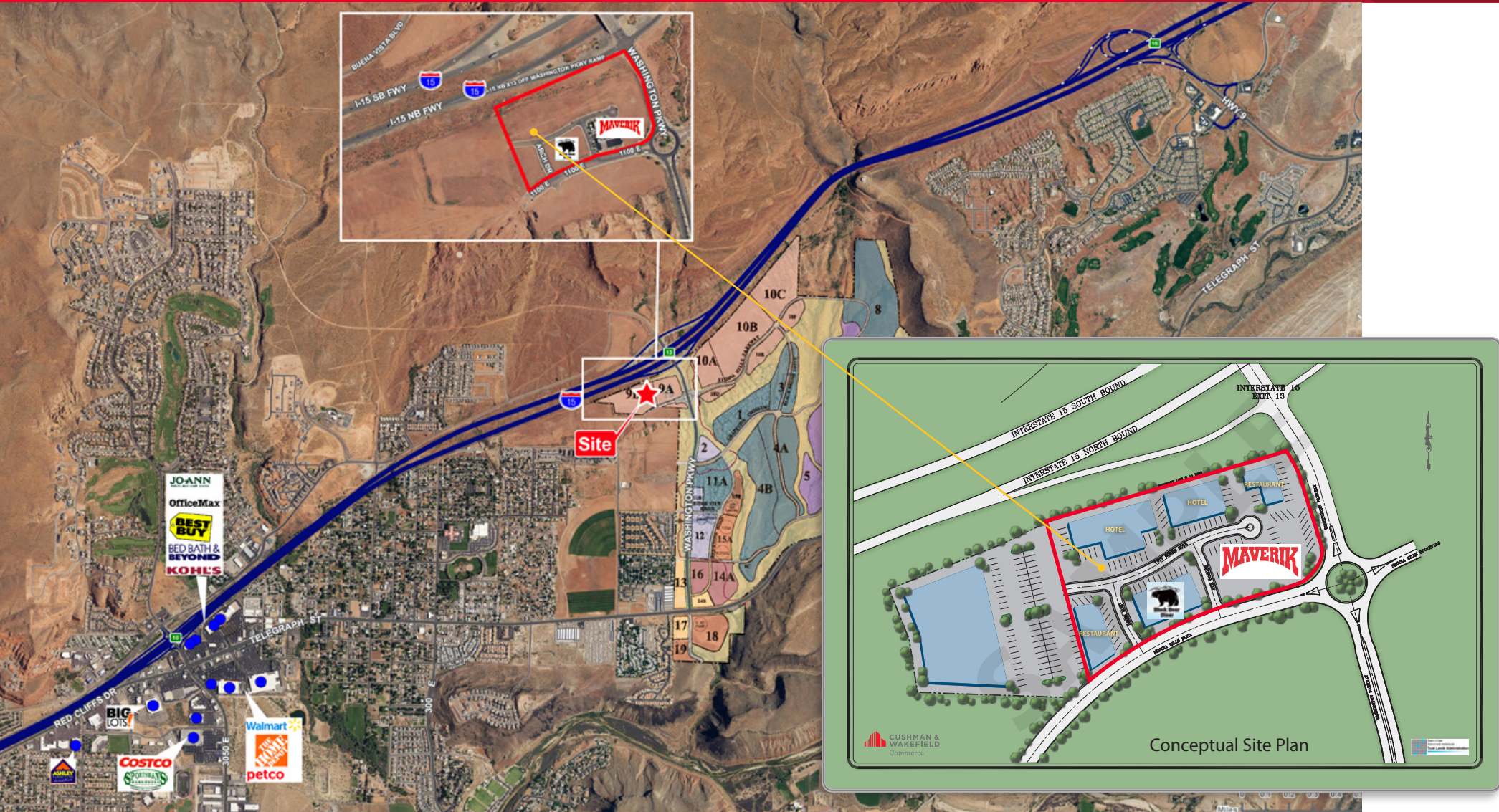




LAND FOR SALE

# Retail Pads Fronting I-15

Exit 13 - Interstate 15, Washington Parkway & Sienna Hills Blvd.  
Washington, Utah 84737



**Tom Callister, SIOR**  
Director  
+1 435 986 4709  
tom.callister@cushwake.com

**Travis J. Parry, SIOR, CCIM**  
Senior Director  
+1 435 986 4708  
travis.parry@cushwake.com

2 West St. George Blvd, Suite 10  
St. George, Utah 84770  
Main +1 435 673 7111  
Fax +1 435 673 7153  
**cushmanwakefield.com**