

FOR LEASE

20422 BEACH BOULEVARD

HUNTINGTON BEACH | CALIFORNIA, 92648



PROPERTY FEATURES:

- Flexible Terms and Month-to Month Leases
- High-Profile Corporate Identity
- Professional Offices With Two (2) or More Private Offices
- Prominent Street Frontage Location
- Walking Distance to Restaurants and Retail
- 1.5 Miles Away From Pacific Coast Hwy & Huntington Beach Pier

AVAILABLE SUITES

SUITE 225 : 528 SF

ASKING RATE: \$1.70 PSF MG

FOR MORE INFORMATION, PLEASE CONTACT:

 **LEE & ASSOCIATES**
COMMERCIAL REAL ESTATE SERVICES

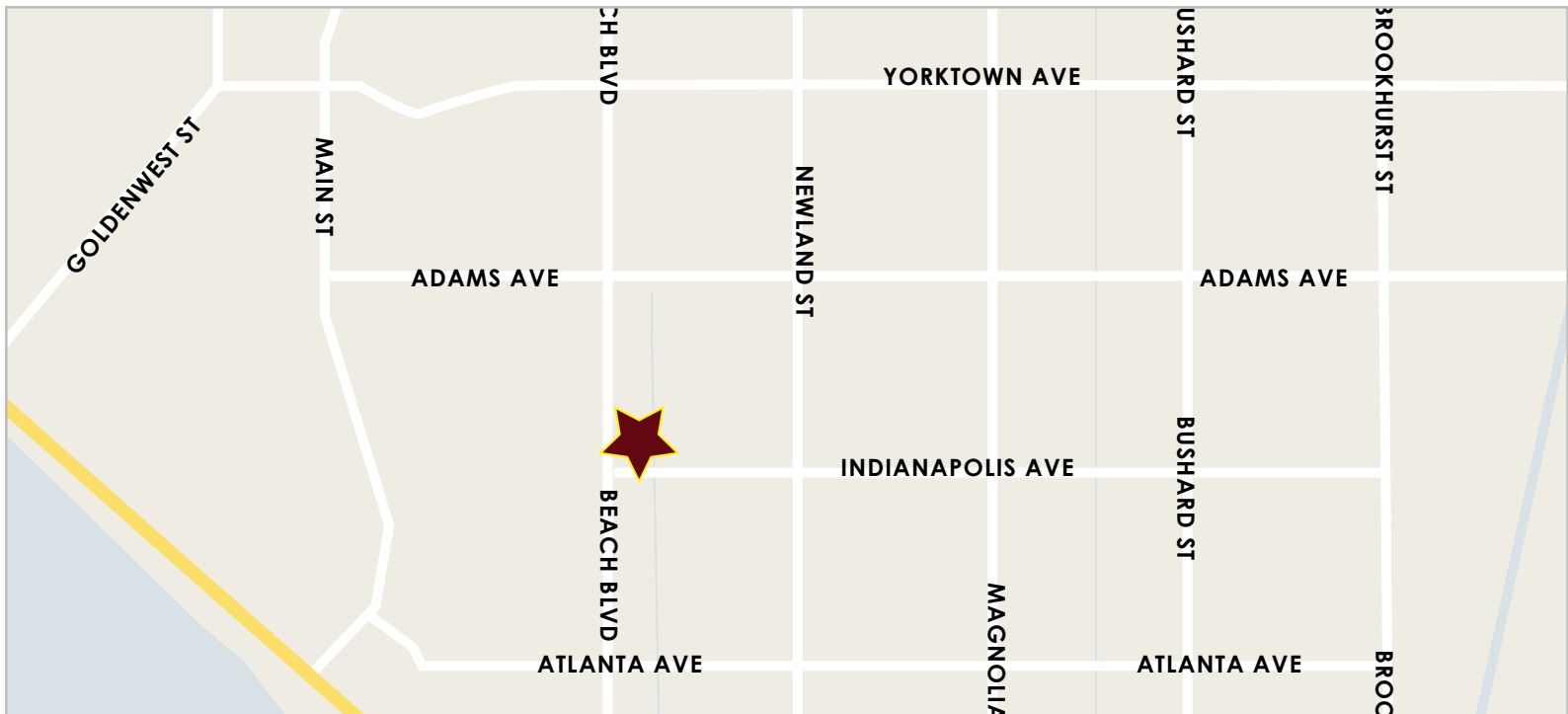
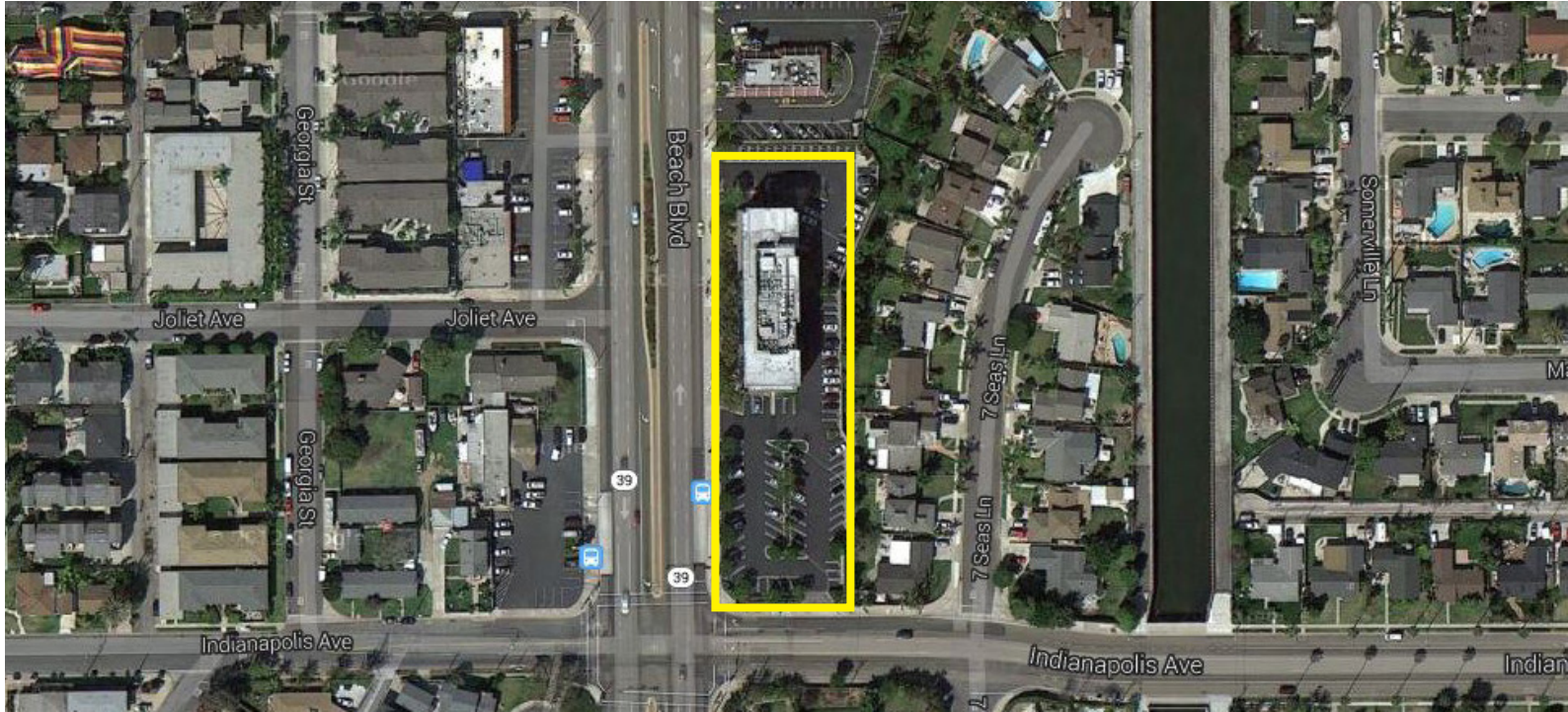
JOSH REILLY, MBA
Principal

BRE#: 01474368
T: 949.525.2720
E: jreilly@leelalb.com

FOR LEASE

20422 BEACH BOULEVARD

HUNTINGTON BEACH | CALIFORNIA, 92648



Copyright © Lee & Associates. All rights reserved. No part of this work may be reproduced or distributed without written permission of the copyright owner. The information contained in this report was gathered by Lee & Associates from sources believed to be reliable. Lee & Associates, however, makes no representation concerning the accuracy or completeness of such information and expressly disclaims any responsibility for any inaccuracy contained herein. 5.19.17

FOR MORE INFORMATION, PLEASE CONTACT:



COMMERCIAL REAL ESTATE SERVICES

JOSH REILLY, MBA
Principal

BRE#: 01474368
T: 949.525.2720
E: jreilly@leelalb.com