



## 23875 VENTURA BOULEVARD - SUITE 203 B

\$1.55 / SF/MO - YEAR 1

- **Ask About Potential L.A. City Gross Receipts Tax Savings**
- **Ask About Availability of High Speed Internet**
- Minutes from 101 Freeway
- 100% HVAC

Calabasas is an affluent city located in the hills of the San Fernando Valley, near the Santa Monica Mountains, between Woodland Hills, Agoura Hills, West Hills, and Malibu.

Notes: Estimated CAM Fees \$0.05/SF/MO – Year 1.

Lessee to verify power and all information contained on brochure.

### FOR MORE DETAILS CONTACT:



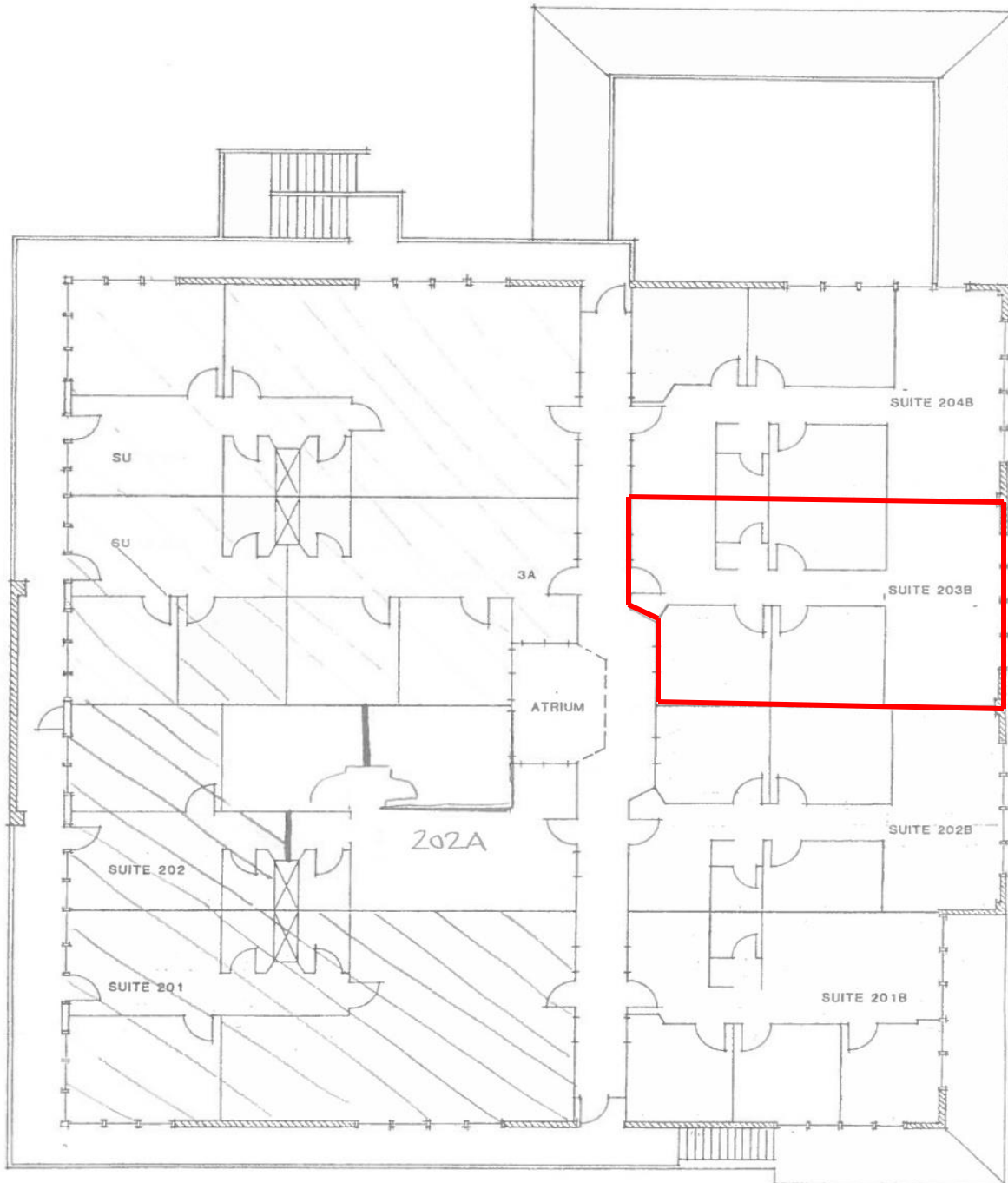
Art Pfefferman  
CalBRE License No.: 01021906  
art@pfeffermancre.com

**Cell** 818-516-0257- **Call or Text**  
**Direct** 818-449-5122  
**Fax:** 818-366-4900

11280 Corbin Ave, Suite A, Porter Ranch, CA 91326

**CBCWORLDWIDE.COM**

23875 VENTURA BOULEVARD



SECOND FLOOR PLAN