

Leasing by:



MEDICAL OFFICE SPACE

FOR LEASE

Owned & Managed by:

welltower

Click or Scan Below



FOR INFORMATION:

KYLE CHURCH
Lightpoint Real Estate Partners

205.919.1528
kyle@lightpointcre.com



Princeton I

801 PRINCETON AVENUE | BIRMINGHAM, AL

medicaloffice.welltower.com

EXECUTIVE SUMMARY

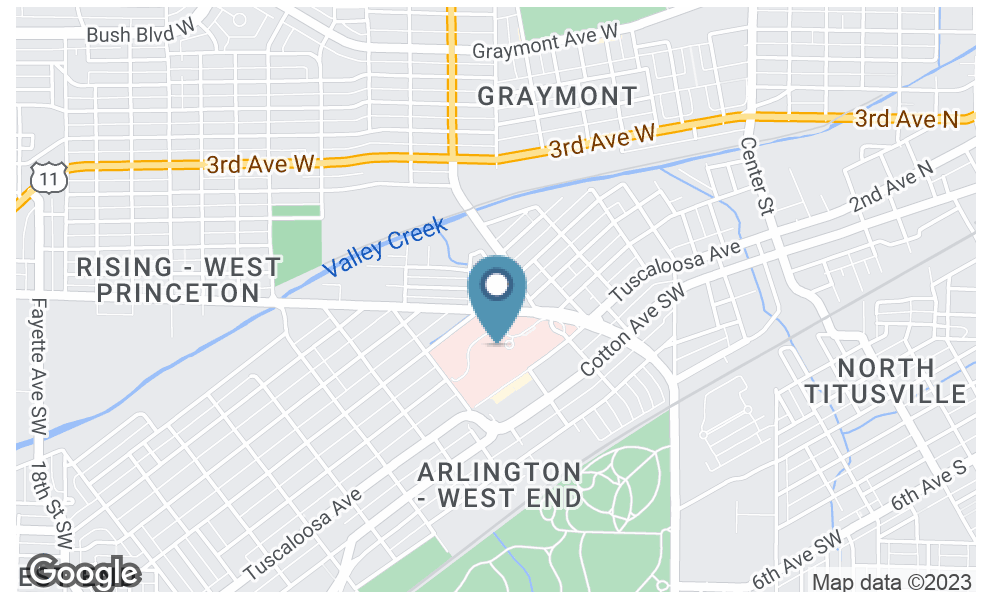


Location Description

Located on the campus of Princeton Baptist Medical Center.

Property Highlights

- 252,000 SF Medical Offices
- Offers a variety of medical specialties and diagnostic services including cancer treatment, cardiac services, diagnostic imaging, neurosurgery, pulmonary medicine, and wound care



KYLE CHURCH
205.919.1528
kyle@lightpointcre.com



FLOOR PLANS

welltower

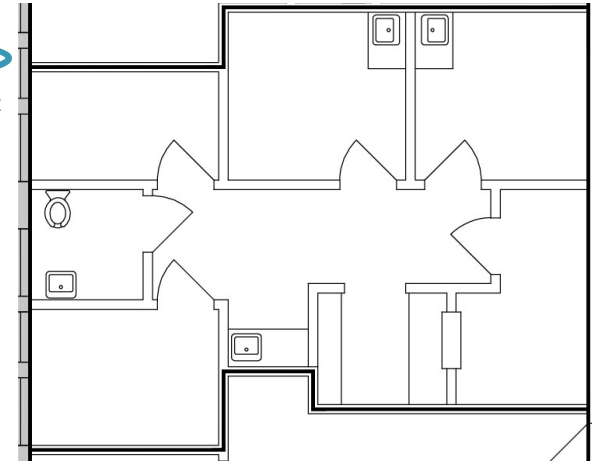
360°
CLICK TO VIEW TOUR



201

3,435 RSF

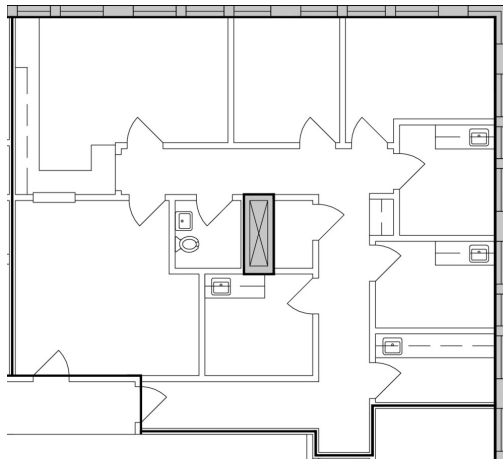
360°
CLICK TO VIEW TOUR



205

767 RSF

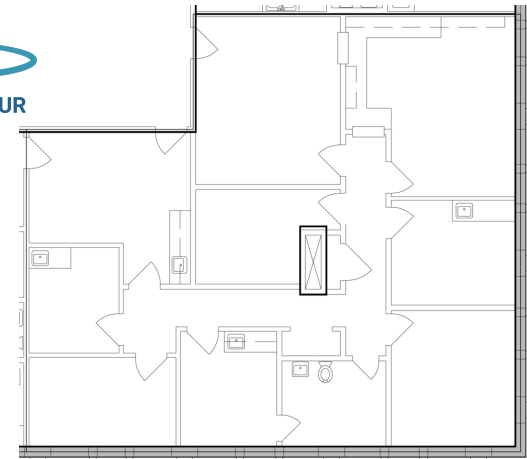
360°
CLICK TO VIEW TOUR



210

1,657 RSF

360°
CLICK TO VIEW TOUR



328

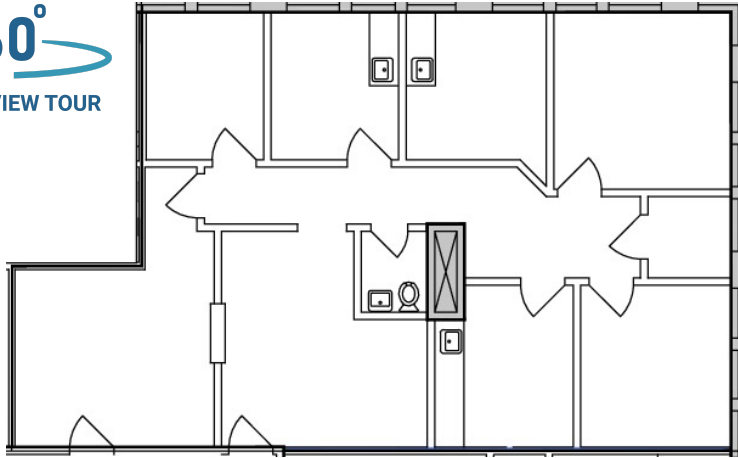
2,195 RSF

KYLE CHURCH
205.919.1528
kyle@lightpointcre.com

FLOOR PLANS

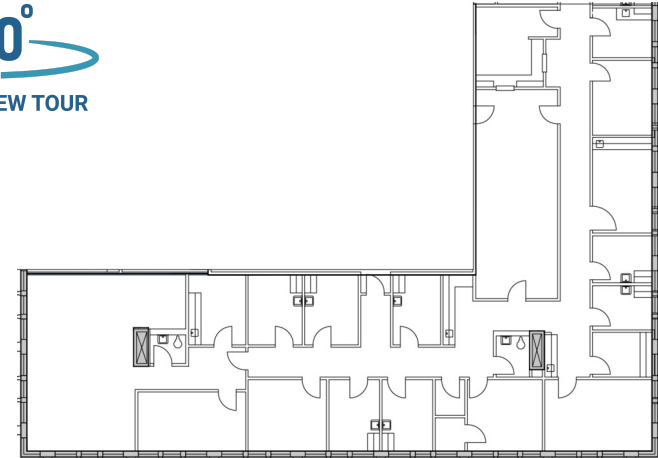
welltower

360°
CLICK TO VIEW TOUR



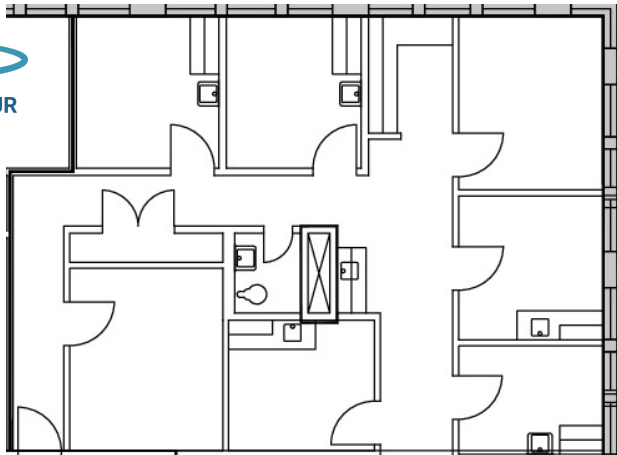
332
1,614 RSF

360°
CLICK TO VIEW TOUR



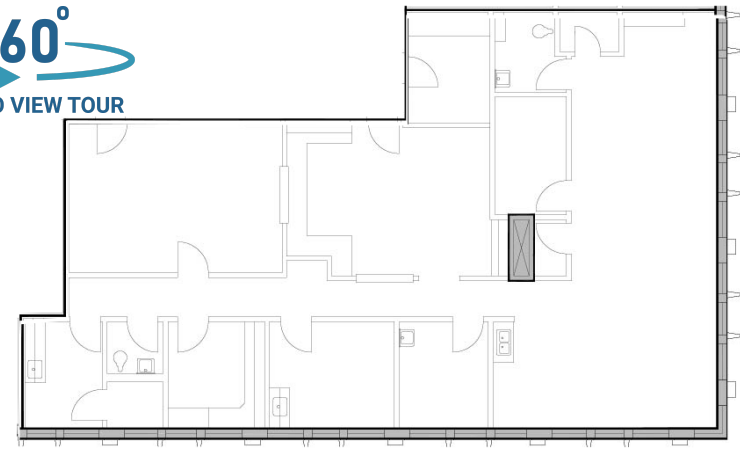
406
5,399 RSF

360°
CLICK TO VIEW TOUR



415
1,617 RSF

360°
CLICK TO VIEW TOUR



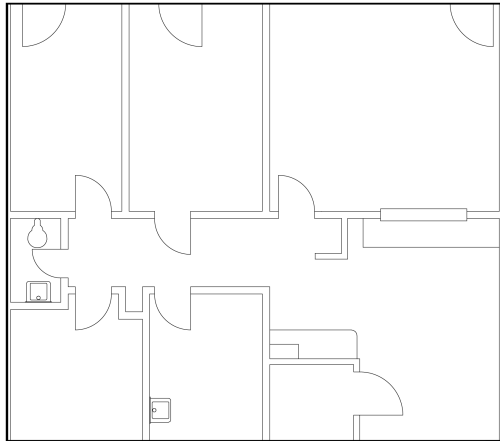
424
2,858 RSF

KYLE CHURCH
205.919.1528
kyle@lightpointcre.com

FLOOR PLANS

welltower

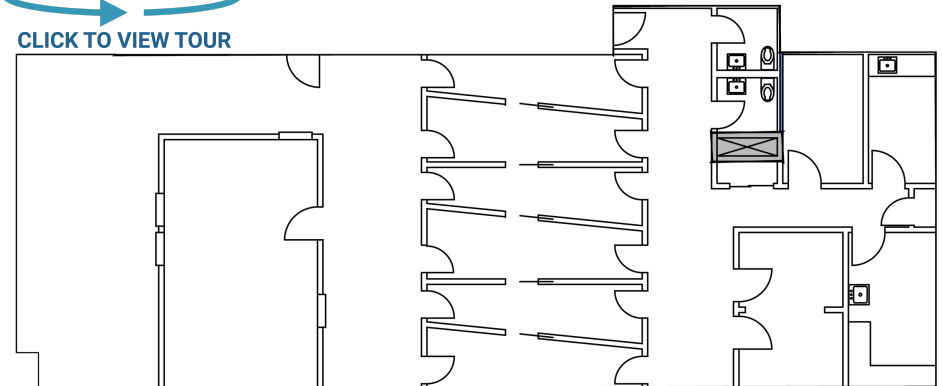
360°
CLICK TO VIEW TOUR



426

1,317 RSF

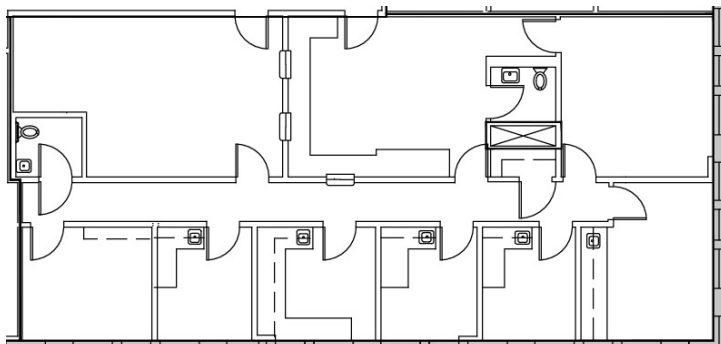
360°
CLICK TO VIEW TOUR



530

3,286 RSF

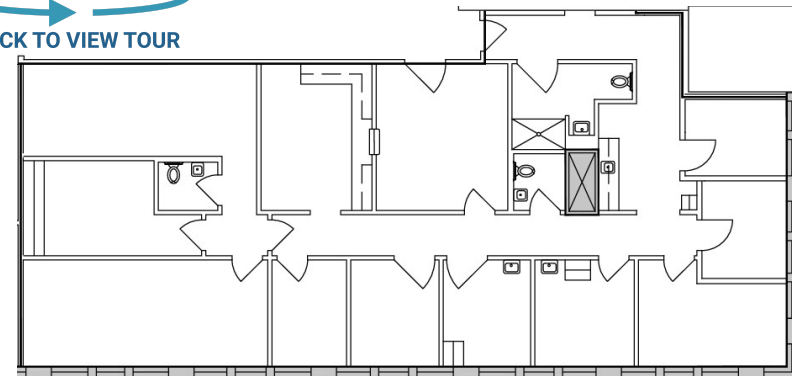
360°
CLICK TO VIEW TOUR



615

2,358 RSF

360°
CLICK TO VIEW TOUR



620

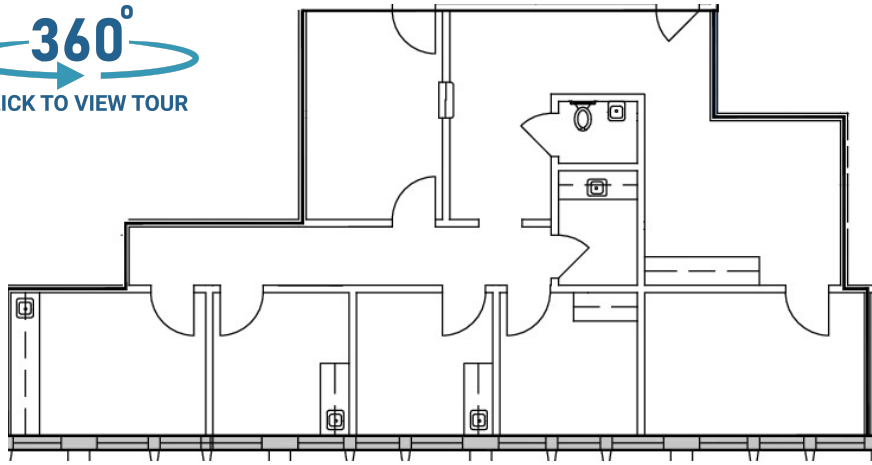
3,121 RSF

KYLE CHURCH
205.919.1528
kyle@lightpointcre.com

FLOOR PLANS

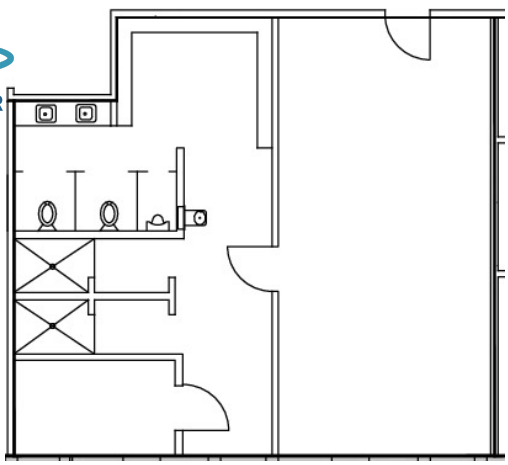
welltower

360°
CLICK TO VIEW TOUR



630
1,693 RSF

360°
CLICK TO VIEW TOUR



801
1,126 RSF

KYLE CHURCH
205.919.1528
kyle@lightpointcre.com

DEMOGRAPHICS MAP & REPORT



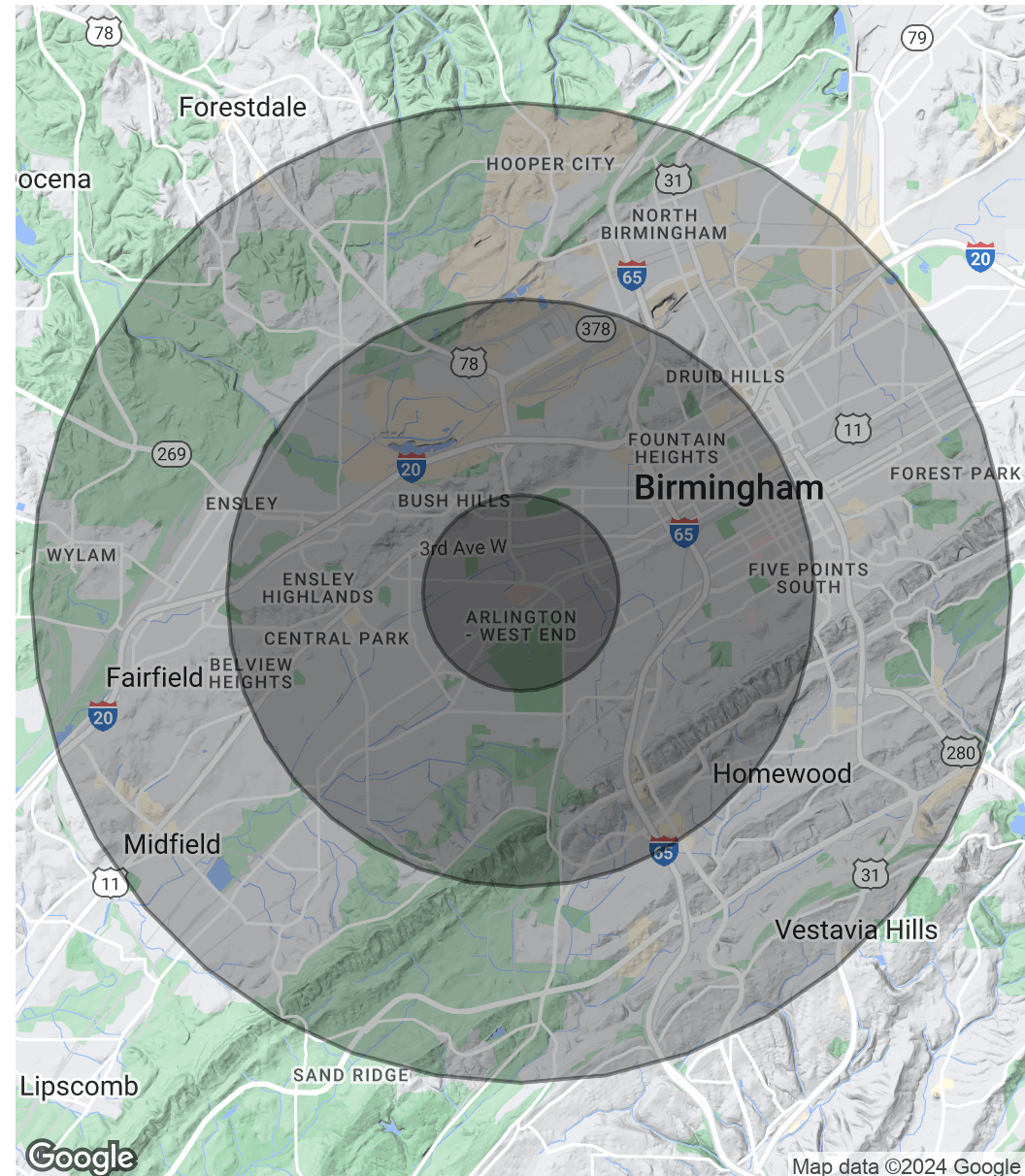
Population

	1 Mile	3 Miles	5 Miles
Total Population	11,549	82,854	187,517
Average Age	34.9	36.0	35.0
Average Age (Male)	32.8	34.3	33.7
Average Age (Female)	36.0	37.6	36.2

Households & Income

	1 Mile	3 Miles	5 Miles
Total Households	4,676	33,911	77,144
# of Persons per HH	2.5	2.4	2.4
Average HH Income	\$27,996	\$35,904	\$46,108
Average House Value	\$76,694	\$80,435	\$119,699

* Demographic data derived from 2020 ACS - US Census



KYLE CHURCH
 205.919.1528
 kyle@lightpointcre.com



Map data ©2024 Google