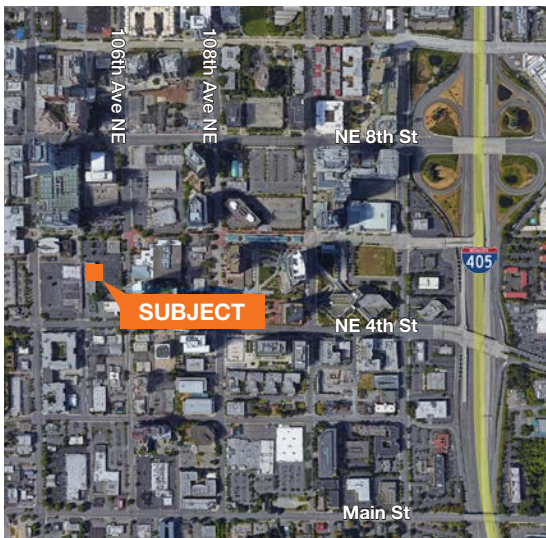




# Available For Lease



**\$24.00/SF, Full Service**

Suite 300 - 14,720 SF (Divisible to 5,606 SF)

Available Now

Up to a 3 year term

Excellent Downtown CBD location

Potential building signage opportunity

Close proximity to local shopping, hotels and restaurants

Abundant parking

## Contact

**Gary Guenther**  
425.450.1154  
garyg@kiddermathews.com

**Patricia Loveall, SIOR**  
206.248.7340  
ploveall@kiddermathews.com

**Celeste Rietveld**  
425.450.1145  
crietveld@kiddermathews.com [kiddermathews.com](http://kiddermathews.com)



# Bellevue Park Plaza

Bellevue CBD



## Contact

**Gary Guenther**  
425.450.1154  
garyg@kiddermathews.com

**Patricia Loveall, SIOR**  
206.248.7340  
ploveall@kiddermathews.com

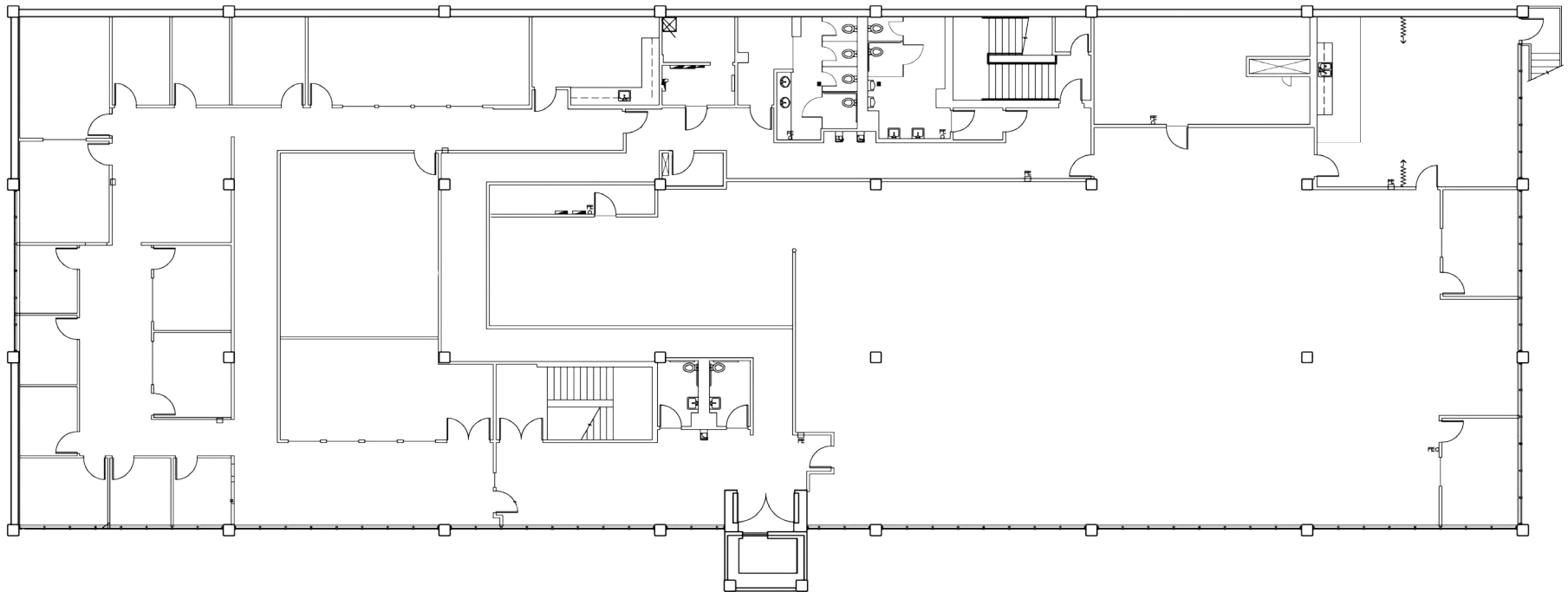
**Celeste Rietveld**  
425.450.1145  
crietveld@kiddermathews.com

[kiddermathews.com](http://kiddermathews.com)

This information supplied herein is from sources we deem reliable. It is provided without any representation, warranty or guarantee, expressed or implied as to its accuracy. Prospective Buyer or Tenant should conduct an independent investigation and verification of all matters deemed to be material, including, but not limited to, statements of income and expenses. Consult your attorney, accountant, or other professional advisor.

# Bellevue Park Plaza

## Floor Plan



### Contact

**Gary Guenther**

425.450.1154

garyg@kiddermathews.com

**Patricia Loveall, SIOR**

206.248.7340

ploveall@kiddermathews.com

**Celeste Rietveld**

425.450.1145

crietveld@kiddermathews.com

[kiddermathews.com](http://kiddermathews.com)

.....

This information supplied herein is from sources we deem reliable. It is provided without any representation, warranty or guarantee, expressed or implied as to its accuracy. Prospective Buyer or Tenant should conduct an independent investigation and verification of all matters deemed to be material, including, but not limited to, statements of income and expenses. Consult your attorney, accountant, or other professional advisor.