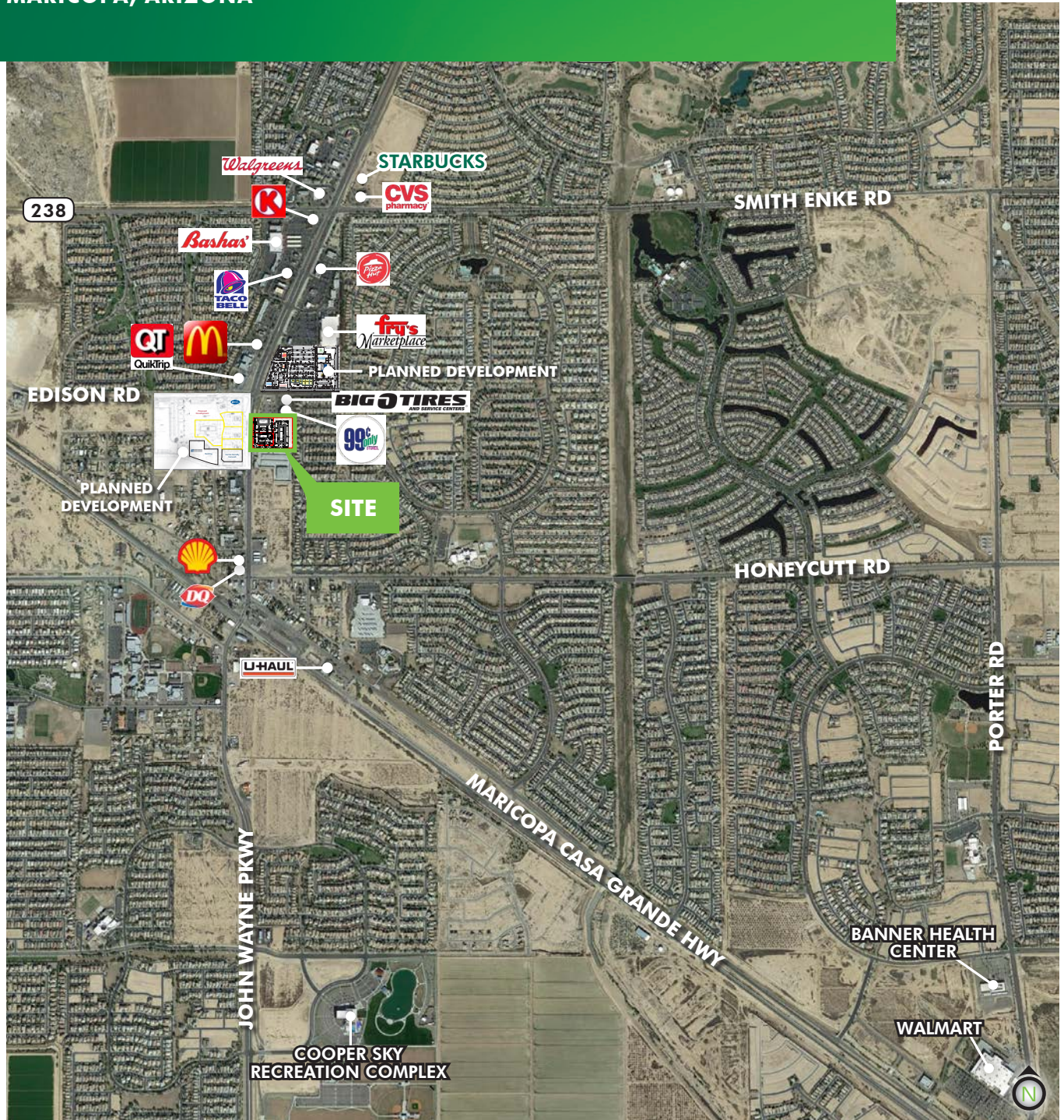


NOW AVAILABLE

PADS AVAILABLE

S/SEC OF HWY 347 & EDISON ST
MARICOPA, ARIZONA



www.cbre.us

 Evergreen
Development | Services | Investments

CBRE

NOW AVAILABLE PADS AVAILABLE

S/SEC OF HWY 347 & EDISON ST



PROPERTY HIGHLIGHTS

- + Municipality: Maricopa, Arizona
- + Highway 347 Traffic Counts (Source: ADOT):
 - North: ±42,500 VPD
 - South: ±31,000 VPD
- + Price: Call for pricing
- + This site is strategically located within the primary commercial corridor in the City of Maricopa.
- + 387 new businesses started in the Maricopa area within the last 3 years (Source: City of Maricopa).
- + The average household income in Maricopa is \$75,000, this is among the highest in the State of Arizona (Source: Esri)
- + Maricopa has one of the lowest crime rates in Metro Phoenix.



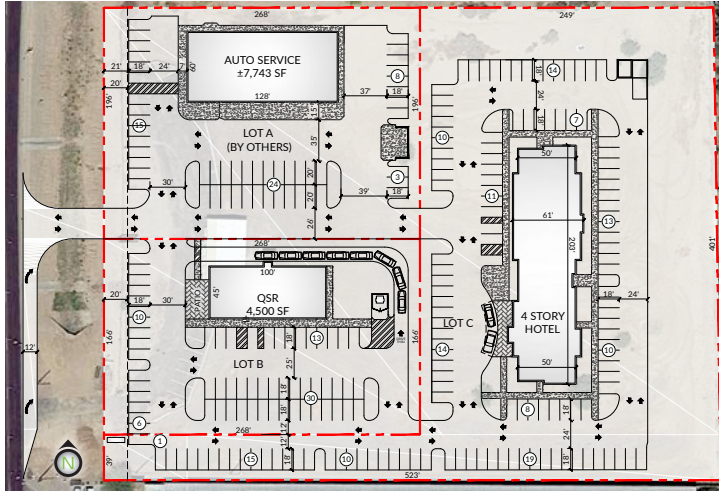
NOW AVAILABLE PADS AVAILABLE

S/SEC OF HWY 347 & EDISON ST

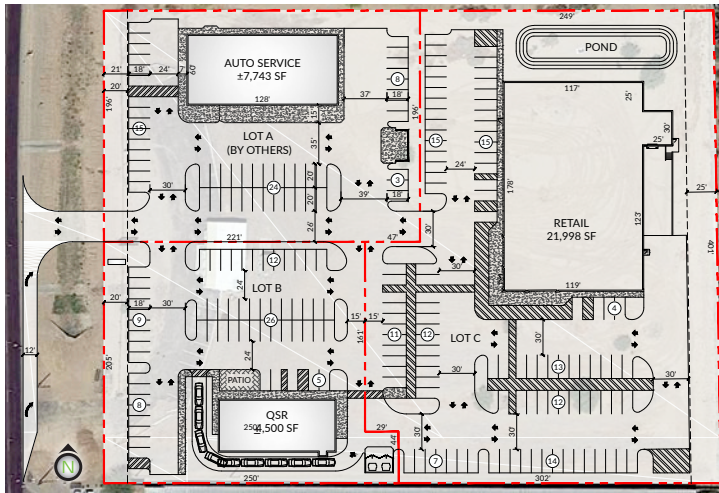


SITE PLAN

OPTION 1:



OPTION 2:



SITE PLAN IMAGES NOT TO SCALE
ALL DIMENSIONS ARE APPROXIMATE



CONTACT US

R. MAX BIPPUS

First Vice President

+1 602 735 5518

max.bippus@cbre.com

© 2018 CBRE, Inc. All rights reserved. This information has been obtained from sources believed reliable, but has not been verified for accuracy or completeness. You should conduct a careful, independent investigation of the property and verify all information. Any reliance on this information is solely at your own risk. CBRE and the CBRE logo are service marks of CBRE, Inc. and/or its affiliated or related companies in the United States and other countries. All other marks displayed on this document are the property of their respective owners. Photos herein are the property of their respective owners and use of these images without the express written consent of the owner is prohibited.

www.cbre.us



CBRE