

FOR LEASE

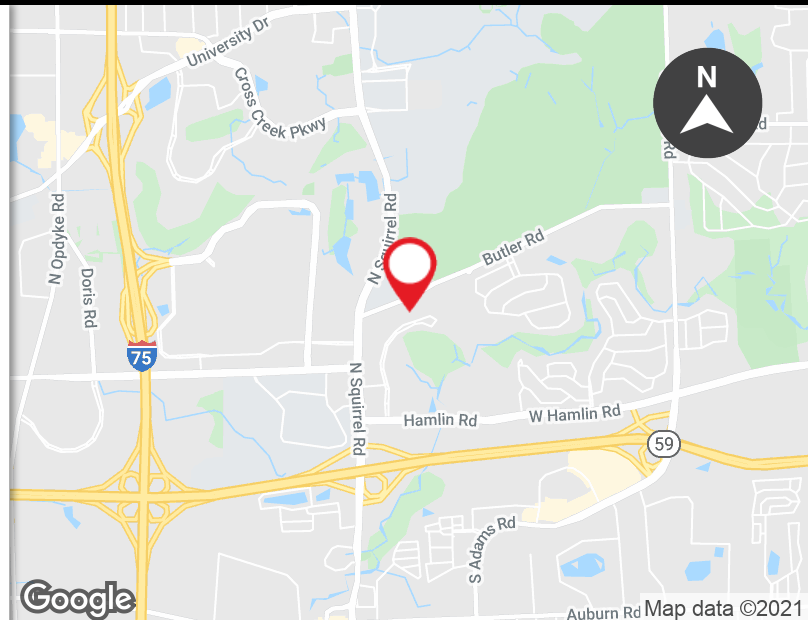
985 ENTRANCE DRIVE
AUBURN HILLS, MI 48326



FULL BUILDING AVAILABLE ±55,000 SF

PROPERTY FEATURES:

- ±55,672 SF full building available in corporate business park
- Built in 1985, renovated 2010-2012 (formerly occupied by Faurecia)
- Building facade signage available
- Large open floorplates (approx. 18.5 SF each) with abundant windows
- Abundant parking (215 spaces) with easy access to all building entrances
- Secured 4.70-acre site with electronically-gated parking
- 18,000± SF of R&D space with raised floor, 14' clear height, clean room, full-sized truck well and additional HVAC systems
- Dual power feeds building
- Maximum flexibility with Technology and Research zoning
- Quick and easy access to M-59 and I-75 via Hamlin Road
- Corporate neighbors include: Comerica, Chrysler, BorgWarner, FANUC, and many more



FOR MORE INFORMATION PLEASE CONTACT:

ROBERT GAGNIUK
robert.gagniuk@freg.com

JORDAN FRIEDMAN
jordan.friedman@freg.com

248.324.2000

eCODE 232

The information provided herein along with any attachment(s) was obtained from sources believed to be reliable, however, Friedman Real Estate makes no guarantees, warranties, or representations as to the completeness or accuracy of such information and legal counsel is advised. All information provided is subject to verification and no liability for reliance on such information or errors or omissions is assumed. The presentation of this property is submitted subject to errors, omissions, change of price or conditions, prior sale or lease, or withdrawal without notice. Copyright © 2018 Friedman Real Estate. All rights reserved.

FOR LEASE

985 ENTRANCE DRIVE
AUBURN HILLS, MI 48326



FOR MORE INFORMATION PLEASE CONTACT:

ROBERT GAGNIUK robert.gagniuk@freg.com

JORDAN FRIEDMAN jordan.friedman@freg.com

248.324.2000

eCODE 232

FOR LEASE

985 ENTRANCE DRIVE
AUBURN HILLS, MI 48326



FOR MORE INFORMATION PLEASE CONTACT:

ROBERT GAGNIUK robert.gagniuk@freg.com

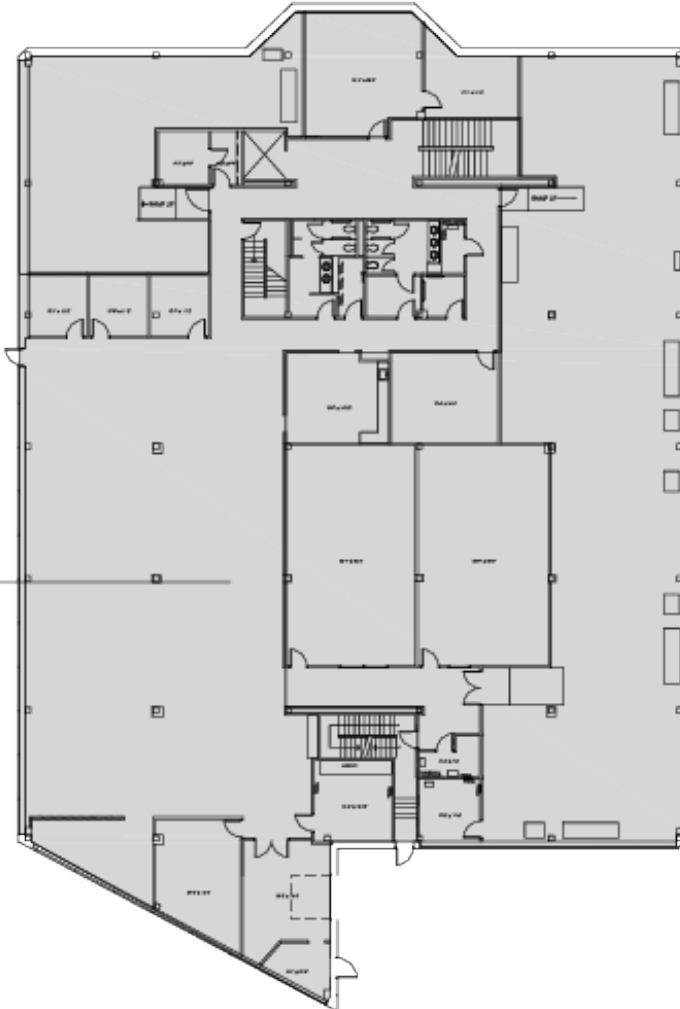
JORDAN FRIEDMAN jordan.friedman@freg.com

248.324.2000

eCODE 232

FOR LEASE

985 ENTRANCE DRIVE
AUBURN HILLS, MI 48326



AVAILABLE
LOWER LEVEL
-17,800 USF

File: Lower_885Entrance.dwg
Date: Jun 20 2017
Time: 11:00:45

DO NOT SCALE



34975 W. Twelve Mile Road
Farmington Hills, MI 48331
Phone: 248-324-2000 Fax: 248-324-9238
Web: www.friedmanrealestate.com

985 ENTRANCE DRIVE
985 W ENTRANCE DRIVE
AUBURN HILLS, MI

LOWER LEVEL

FOR DETAILS PLEASE CALL
248-324-2000



FOR MORE INFORMATION PLEASE CONTACT:

ROBERT GAGNIUK robert.gagniuk@freg.com

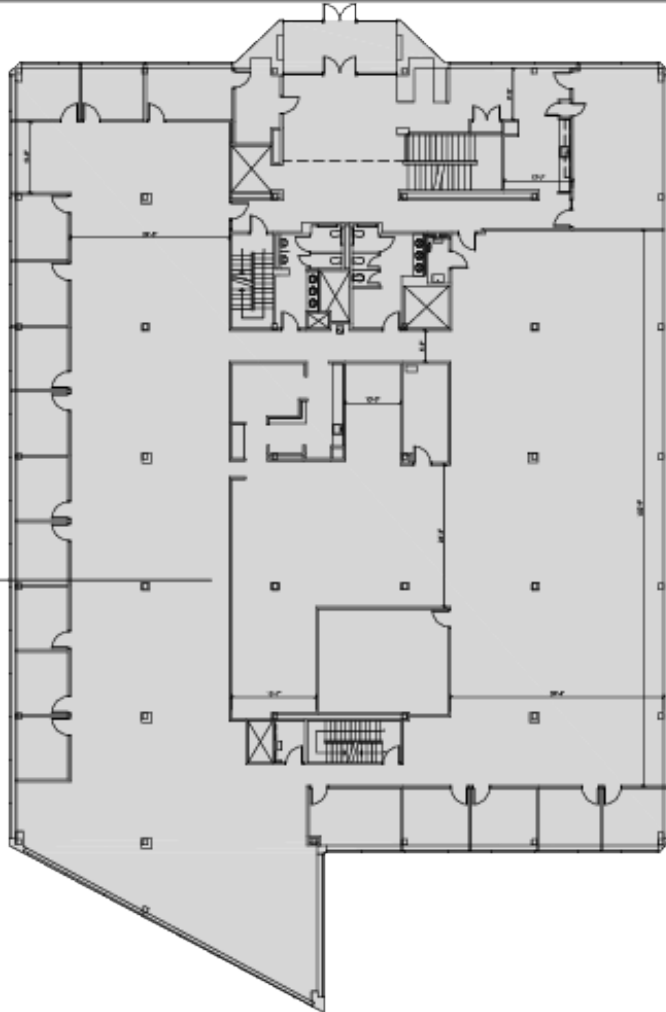
JORDAN FRIEDMAN jordan.friedman@freg.com

248.324.2000

eCODE 232

FOR LEASE

985 ENTRANCE DRIVE
AUBURN HILLS, MI 48326



AVAILABLE
1ST FLOOR
~17,990 USF

File: first floor.dwg
Date: Jun 20 2017
Time: 10:39:35

DO NOT SCALE



34975 W. Twelve Mile Road
Farmington Hills, MI 48331
Phone: 248.324.2000 Fax: 248.324.9238
Web: www.friedmanrealestate.com

985 ENTRANCE DRIVE
985 W ENTRANCE DR
AUBURN HILLS, MI

1ST FLOOR

FOR DETAILS PLEASE CALL
248-324-2000



FOR MORE INFORMATION PLEASE CONTACT:

ROBERT GAGNIUK robert.gagniuk@freg.com

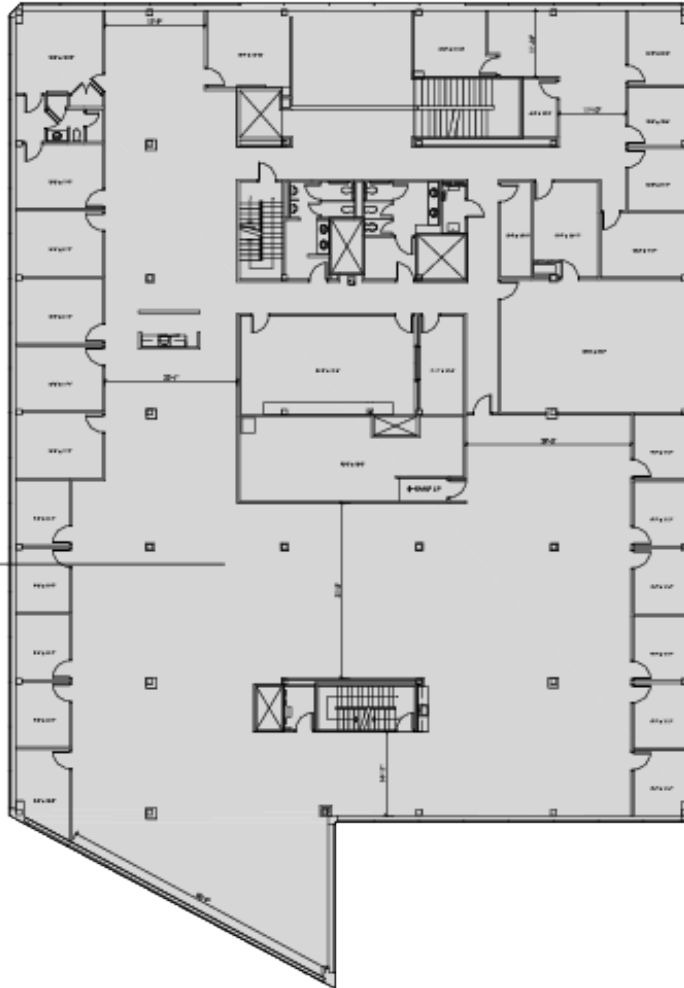
JORDAN FRIEDMAN jordan.friedman@freg.com

248.324.2000

eCODE 232

FOR LEASE

985 ENTRANCE DRIVE
AUBURN HILLS, MI 48326



AVAILABLE
2ND FLOOR
~17,700 USF

File: 2nd_985Entrance.dwg
Date: Jun 20 2017
Time: 10:31:14

DO NOT SCALE



34975 W. Twelve Mile Road
Farmington Hills, MI 48331
Phone: 248-324-2000 Fax: 248-324-9238
Web: www.friedmanrealstate.com

985 ENTRANCE DRIVE
985 W ENTRANCE DRIVE
AUBURN HILLS, MI

2ND FLOOR

FOR DETAILS PLEASE CALL
248-324-2000



FOR MORE INFORMATION PLEASE CONTACT:

ROBERT GAGNIUK robert.gagniuk@freg.com

JORDAN FRIEDMAN jordan.friedman@freg.com

248.324.2000

eCODE 232