

FOR LEASE

495 Elder Avenue

Sand City, California



OFFERED AT: \$1.25 PSF, MODIFIED GROSS



- **Three Small Offices Available (Office Space Only)...**
#7: 430 sq ft | #8: 804 sq ft | #9: 500 sq ft
- **Bright Space with Ample Parking, In the Heart of the West End**
 - **Tenant Improvement Negotiable**

Alison Goss BRE#01815323
agoss@mahoneycommercial.com
Tel: 831.646.1919 | Fax: 831.646.1115
www.mahoneycommercial.com

LEADERS IN COMMERCIAL REAL ESTATE

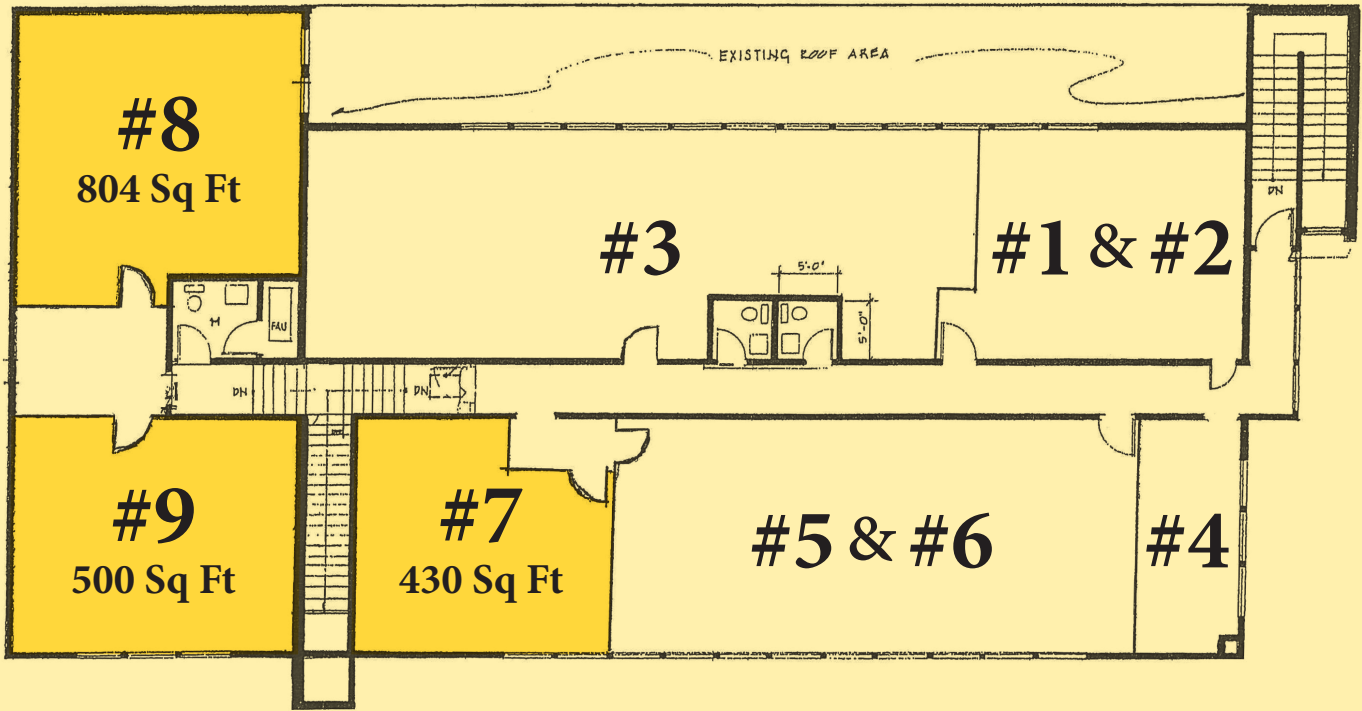
495 Elder Avenue

Sand City, California

PROPERTY PHOTOS



LEADERS IN COMMERCIAL REAL ESTATE

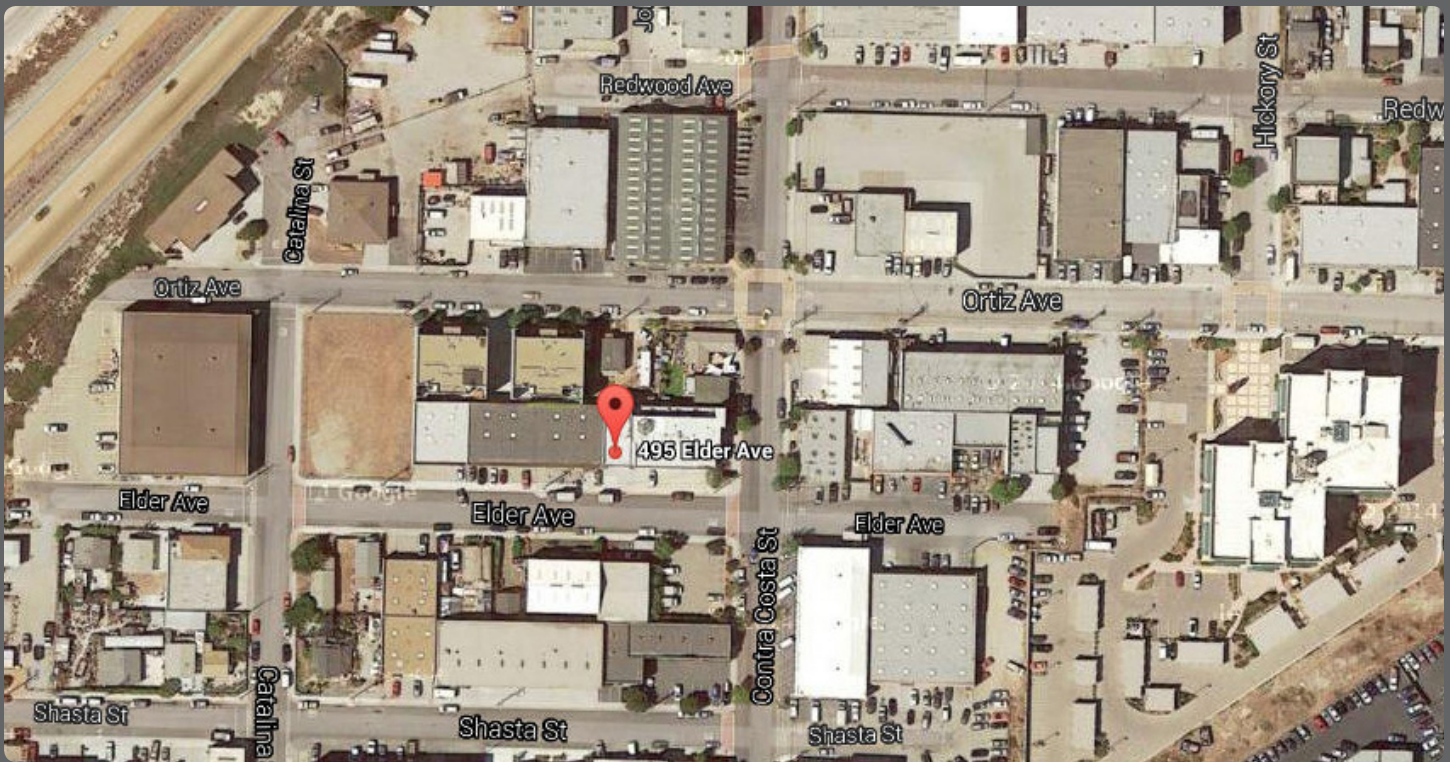
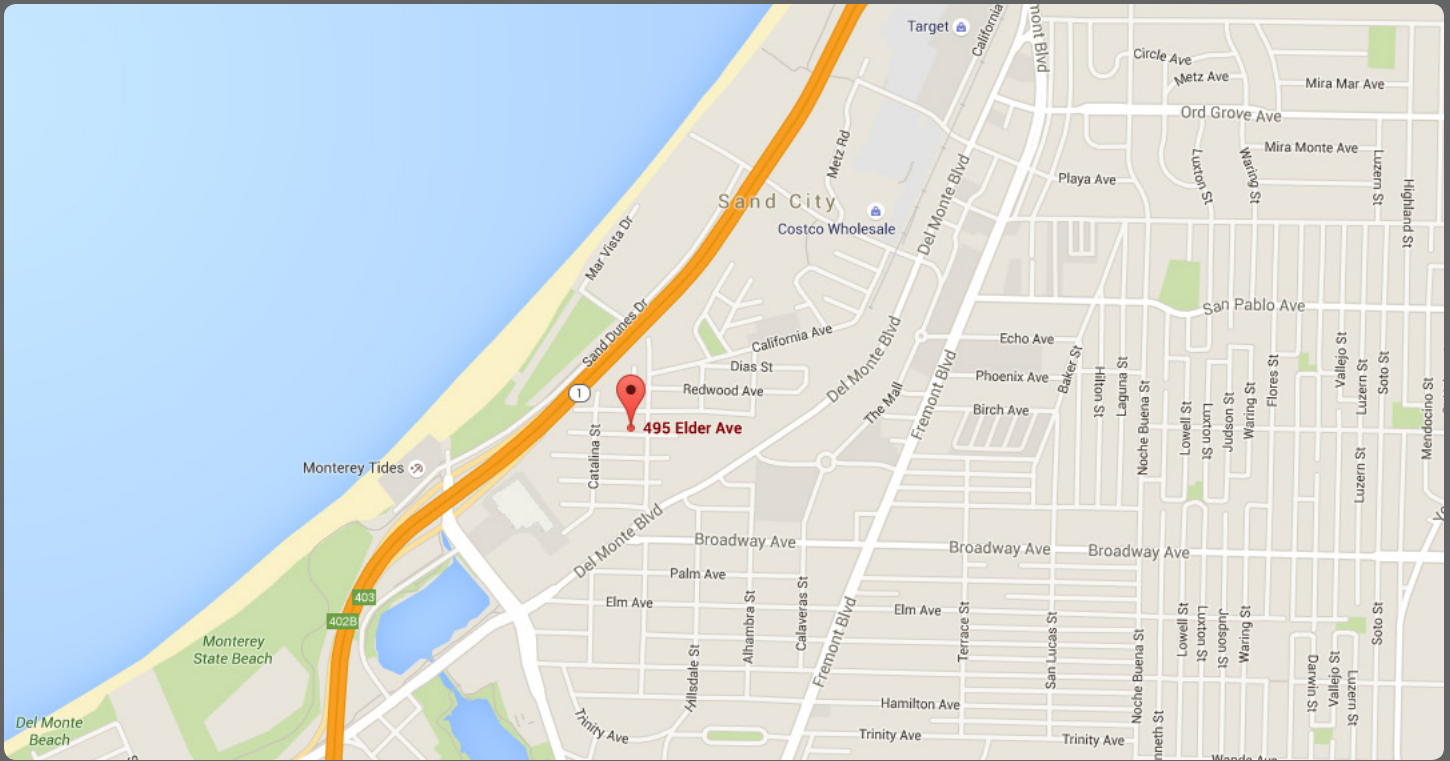


UPPER LEVEL
UNIT ASSIGNMENT FOR 495 ELDER AVENUE

495 Elder Avenue

Sand City, California

LOCATION MAPS



LEADERS IN COMMERCIAL REAL ESTATE

The information contained herein has either been given to us by the owner of the herein described real property or obtained from sources we consider reliable. However, we do not represent that it is accurate or complete and it should not be relied upon as such. All of the information contained herein is subject to change without notice.