

FOR LEASE

3809 Juniper Trace



CARR
Development, Inc.



Phone: (512) 306-1771

Fax: (512) 327-6109

info@carrdevelopment.com
5121 Bee Cave Rd., Suite 207
Austin, TX 78746



PROPERTY INFO

- Multi-tenant office building located in the highly desirable City of Bee Cave.
- Walking distance from the Hill Country Galleria, which features an abundance of restaurants, shops, entertainment and a library.
- Next door to the new Sonesta Hotel
- Easy access to Bee Cave Road, Highway 71, and Ranch Road 620
- Two mile hike and bike trail located directly behind the building
- Scenic views

OFFICE SPACE AVAILABLE

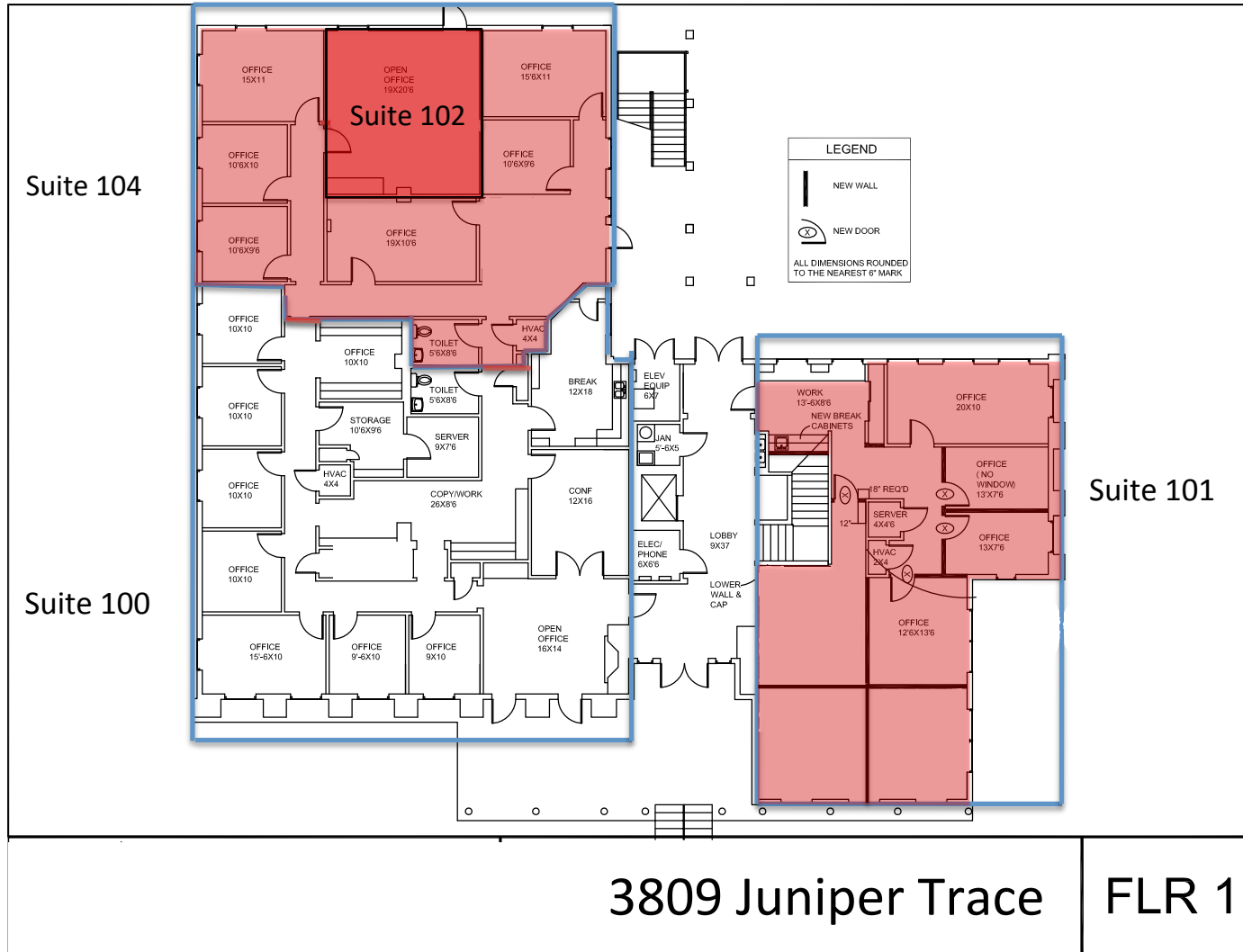
- Suite 102: 422 RSF
- Suite 104: 1,811 RSF (contiguous up to 2,233)
- Suite 101: 1,902 RSF
- Suite 204: 1,403 RSF

RATES I NNN

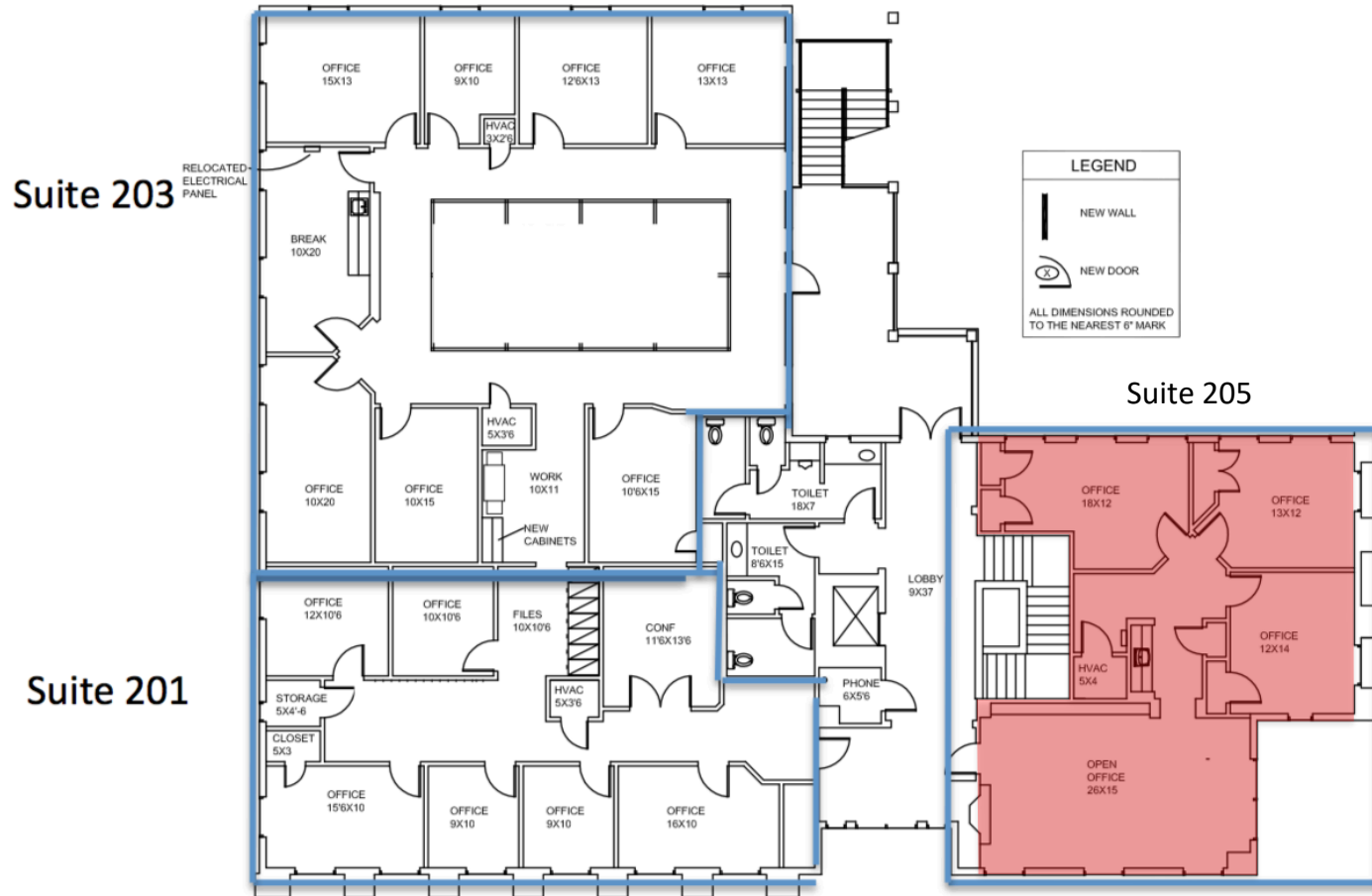
- Please call for current lease rates



FLOOR PLAN



FLOOR PLAN



FOR LEASE | 3809 JUNIPER TRACE, BEE CAVE, TX 78738

