

±221 ACRES FOR SALE

EXCLUSIVE LISTING | PINAL COUNTY, ARIZONA

LOCATION Property is located on the southwest corner of Selma Highway and Anderson Road in Pinal County, Arizona.

PRICE Submit

SIZE ±221 Acres, ±177.5 Irrigated Acres

PARCELS 500-11-0030, 500-11-004C

ZONING AG

TAXES \$8,060.78 (2016)

COMMENTS

- Property is NOT located in the floodplain
- Crops typically grown in the area are alfalfa, cotton, wheat, forage crops, and melons
- Farm is located in a highly productive agriculture region

[Click here to view Water Report](#)

[Click here to view the Soil Report](#)



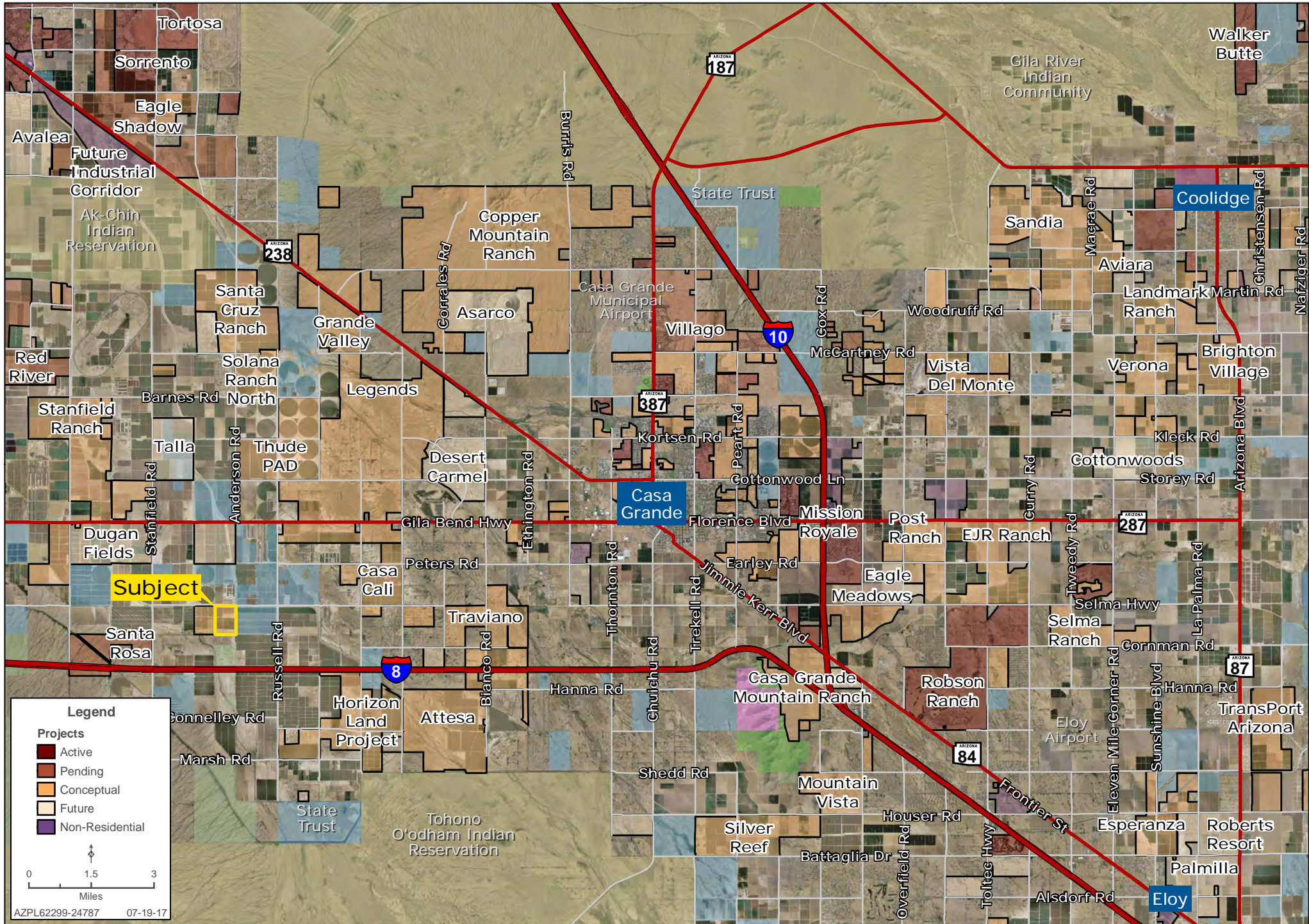
Bobby Wuertz | bwuertz@landadvisors.com Kirk McCarville | kmccarville@landadvisors.com

4900 North Scottsdale Road, Suite 3000, Scottsdale, Arizona 85251 ph. 480.483.8100 | www.landadvisors.com

The information contained herein is from sources deemed reliable. We have no reason to doubt its accuracy but do not guarantee it. It is the responsibility of the person reviewing this information to independently verify it. This package is subject to change, prior sale or complete withdrawal. AZPL62299-8.14.17

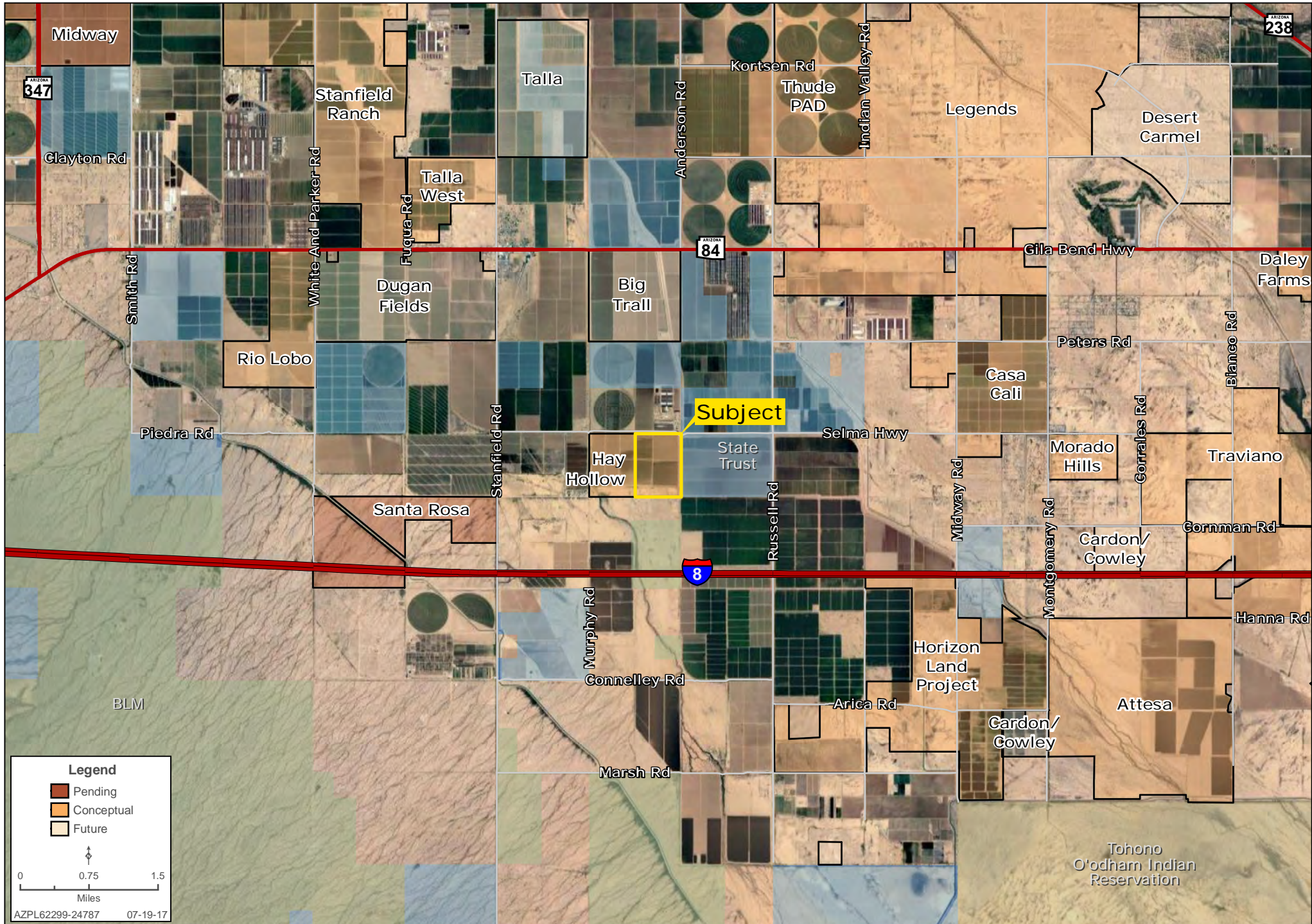
REGIONAL MAP

Bobby Wuertz | Kirk McCarville | 480.483.8100 | www.landadvisors.com



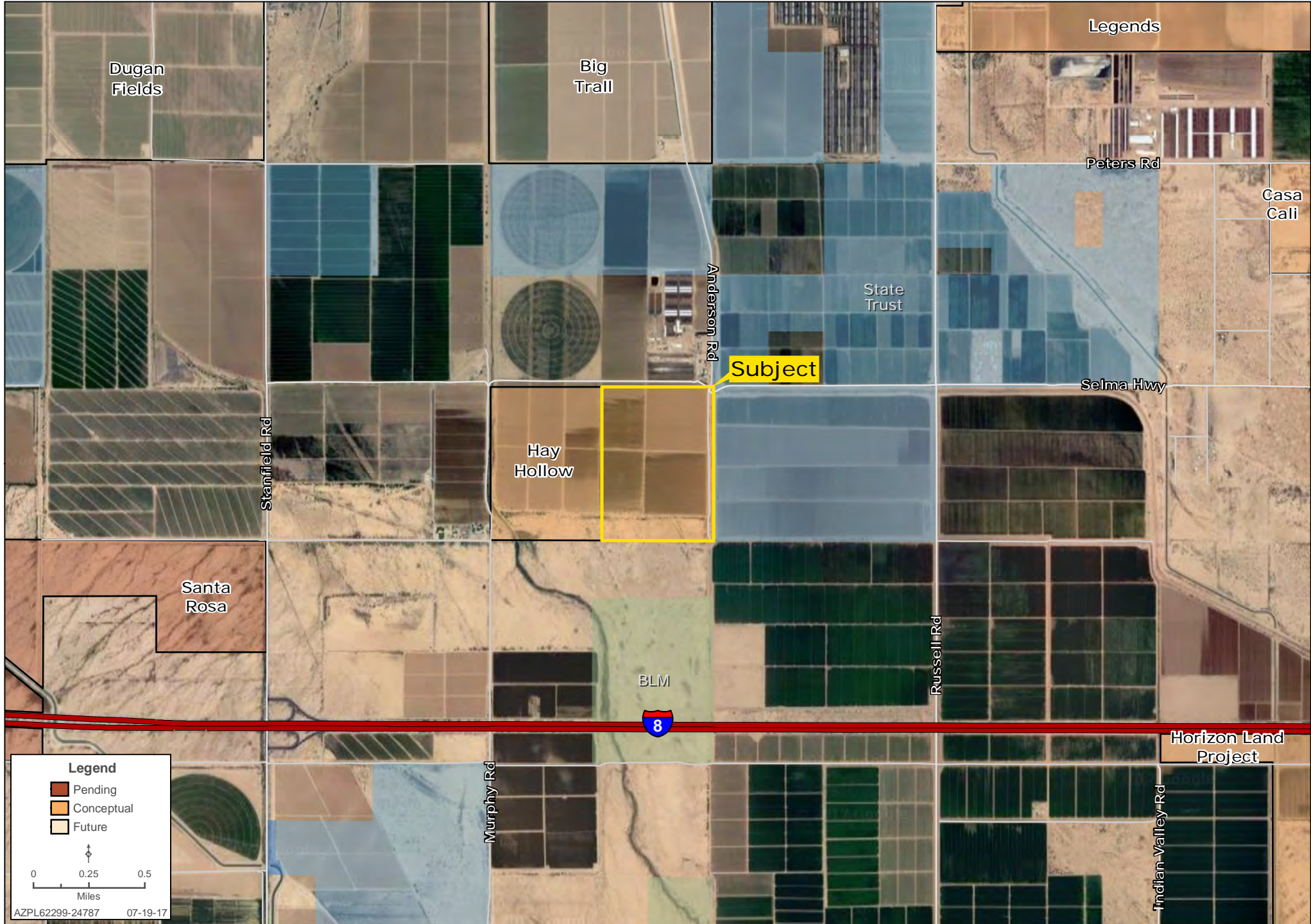
SURROUNDING DEVELOPMENT MAP

Bobby Wuertz | Kirk McCarville | 480.483.8100 | www.landadvisors.com



SURROUNDING AREA MAP

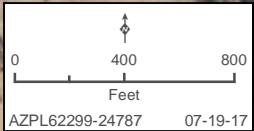
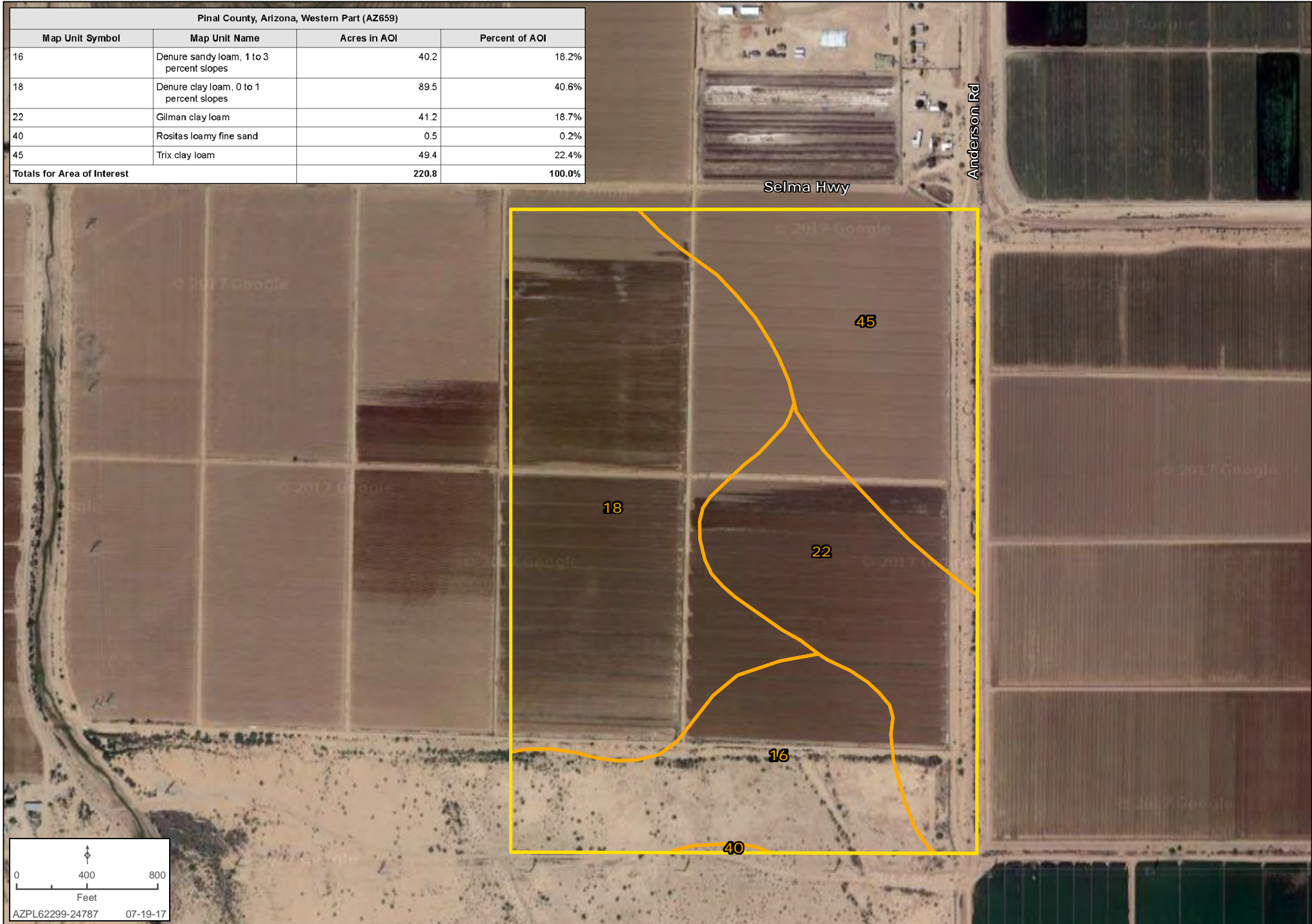
Bobby Wuertz | Kirk McCarville | 480.483.8100 | www.landadvisors.com



SOILS MAP

Bobby Wuertz | Kirk McCarville | 480.483.8100 | www.landadvisors.com

Pinal County, Arizona, Western Part (AZ659)			
Map Unit Symbol	Map Unit Name	Acres in AOI	Percent of AOI
16	Denure sandy loam, 1 to 3 percent slopes	40.2	18.2%
18	Denure clay loam, 0 to 1 percent slopes	89.5	40.6%
22	Gilman clay loam	41.2	18.7%
40	Rositas loamy fine sand	0.5	0.2%
45	Trix clay loam	49.4	22.4%
Totals for Area of Interest		220.8	100.0%



PROPERTY DETAIL MAP

Bobby Wuertz | Kirk McCarville | 480.483.8100 | www.landadvisors.com



PROPERTY DETAIL & FLOODPLAIN MAP

Bobby Wuertz | Kirk McCarville | 480.483.8100 | www.landadvisors.com

