

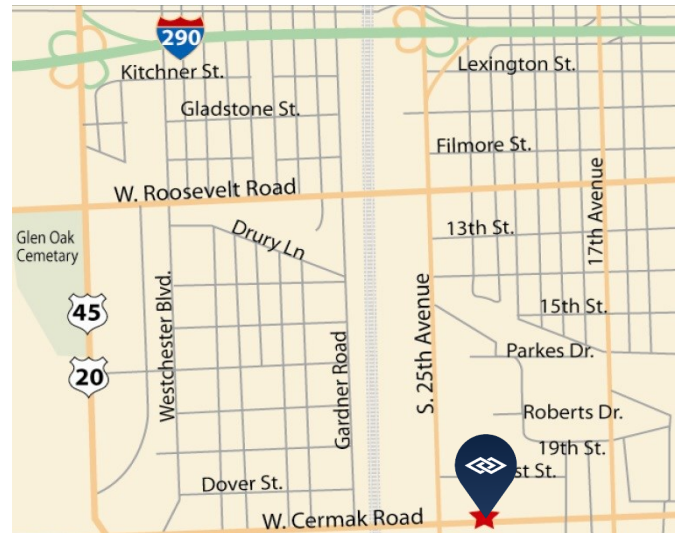
AVAILABLE FOR LEASE

2101 W. CERMAK ROAD, BROADVIEW, ILLINOIS



BUILDING SPECIFICATIONS

BUILDING SIZE:	55,476 SF
AVAILABLE SPACE:	15,850 SF
OFFICE:	1,760 SF
CEILING HEIGHT:	22' clear
LOADING:	1 interior dock with leveler 1 drive-in door
POWER:	400 amps, 480 volts
PARKING:	16 cars
SPRINKLER:	Fully
HEAT:	Gas
LEASE RATE:	\$8.50 psf modified gross



FEATURES

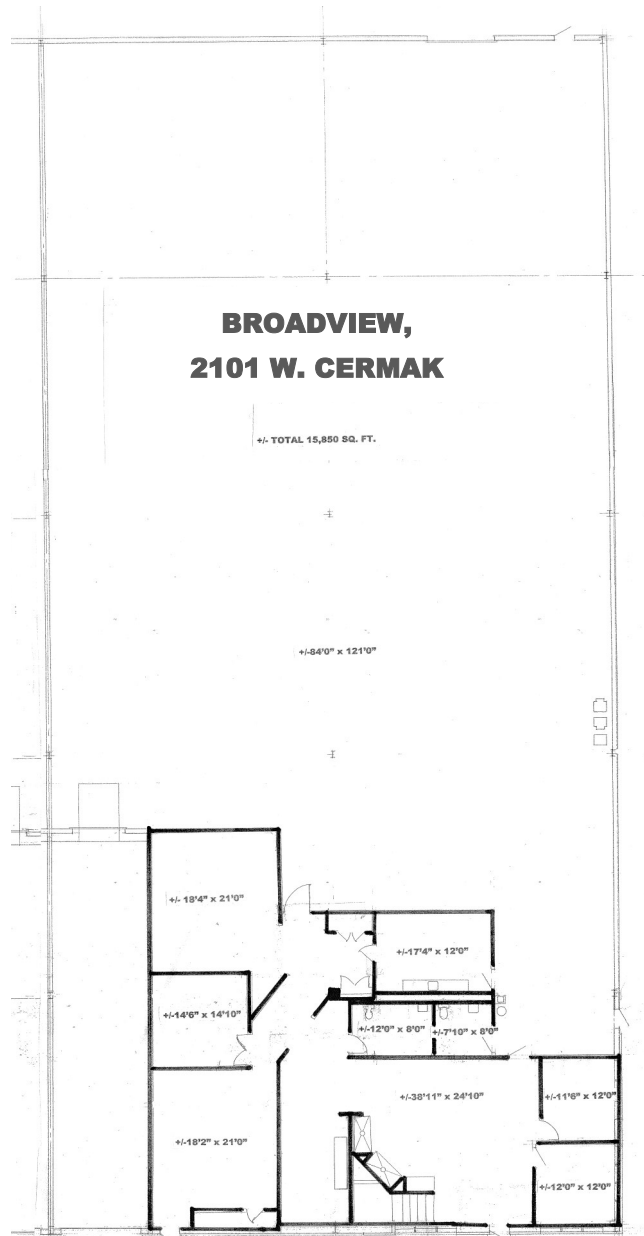
- Less than 2 minutes from full interchange at I-290 and 25th Avenue
- High cube warehouse

<p>FOR ADDITIONAL INFORMATION, PLEASE CONTACT:</p>	<p>GEORGE J. CIBULA, SIOR Managing Broker gcibula@darwinrealty.com</p>	<p>MANDY LEWANDOWSKI Associate (630) 993-3851 mandy@darwinrealty.com</p>
---	---	---

AVAILABLE FOR LEASE

2101 W. CERMAK ROAD, BROADVIEW, ILLINOIS

LAYOUT



FOR ADDITIONAL
INFORMATION,
PLEASE CONTACT:

GEORGE J. CIBULA, SIOR
Managing Broker
gcibula@darwinrealty.com

MANDY LEWANDOWSKI
Associate
(630) 993-3851
mandy@darwinrealty.com