

FOR LEASE

# THE SALAL CREDIT UNION BUILDING

9706

4TH AVENUE NORTHEAST

Seattle, WA 98115

NEW RENOVATION RENDERINGS



[www.cbre.us/seattle](http://www.cbre.us/seattle)

**CBRE**

FOR LEASE  
**THE SALAL CREDIT UNION BUILDING**

9706  
4TH AVENUE NORTHEAST  
Seattle, WA 98115

FOR LEASE  
**THE SALAL CREDIT UNION BUILDING**

9706  
4TH AVENUE NORTHEAST  
Seattle, WA 98115



**PROPERTY HIGHLIGHTS**

- + Class A building
- + New common corridors
- + Exterior landscaping and lobby renovation underway.
- + Tenant improvements negotiable
- + Efficient floor plans
- + Bike storage
- + Showers on floor 1
- + Lease rate (FSG): Year 1 rate \$38.00 PSF
- + Comcast fiber in building



**PROXIMITY HIGHLIGHTS**

- + Proximity to:
  - Seattle Athletic Club
  - Northgate Mall
  - Northgate Transit Center
  - Future Northgate Link Light Rail Station
- + Free parking (3/1,000 SF) in adjacent garage



FOR LEASE  
**THE SALAL CREDIT UNION BUILDING**

9706  
4TH AVENUE NORTHEAST  
Seattle, WA 98115

FOR LEASE  
**THE SALAL CREDIT UNION BUILDING**

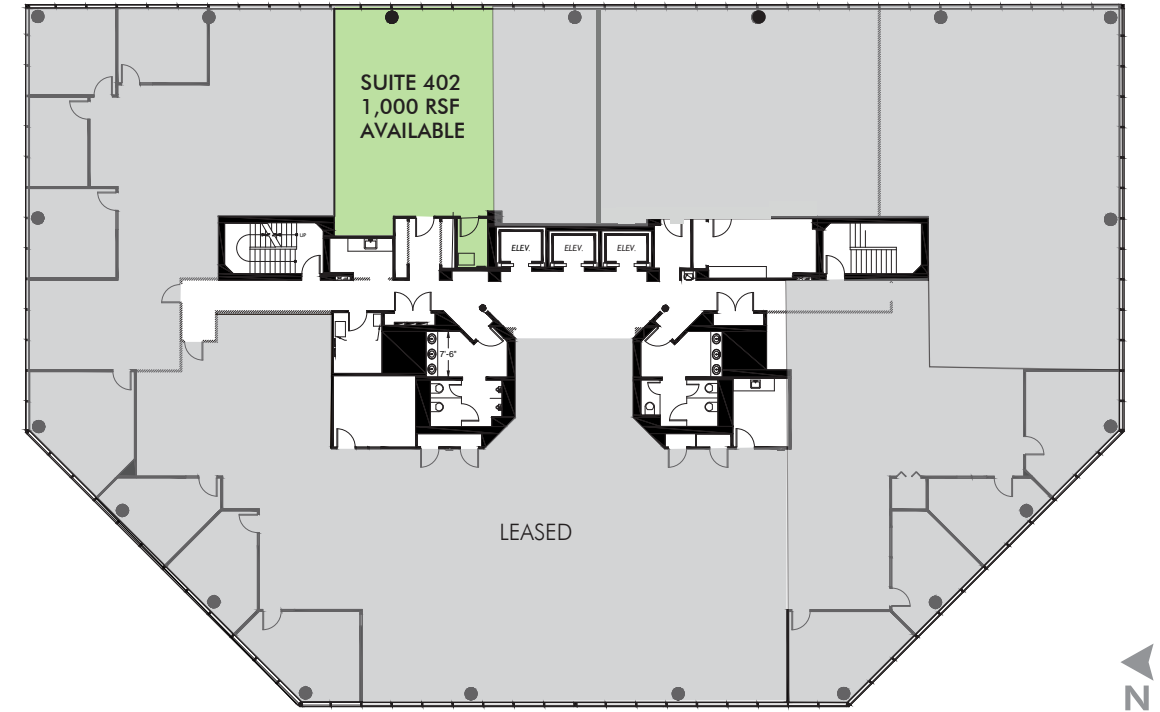
9706  
4TH AVENUE NORTHEAST  
Seattle, WA 98115

 **PHOTOS**



 **FLOOR PLANS**

FLOOR 4



SUITE	SIZE RSF ±
402	1,000

FOR LEASE  
**THE SALAL CREDIT UNION BUILDING**

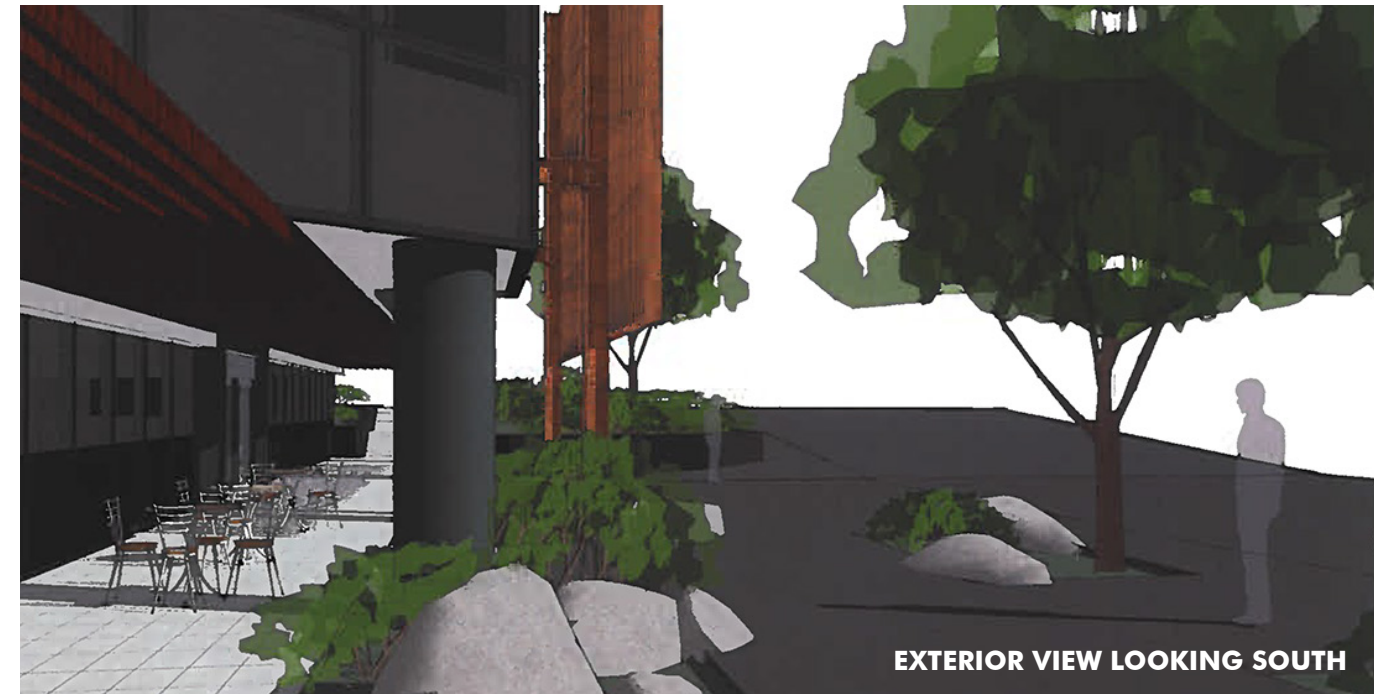
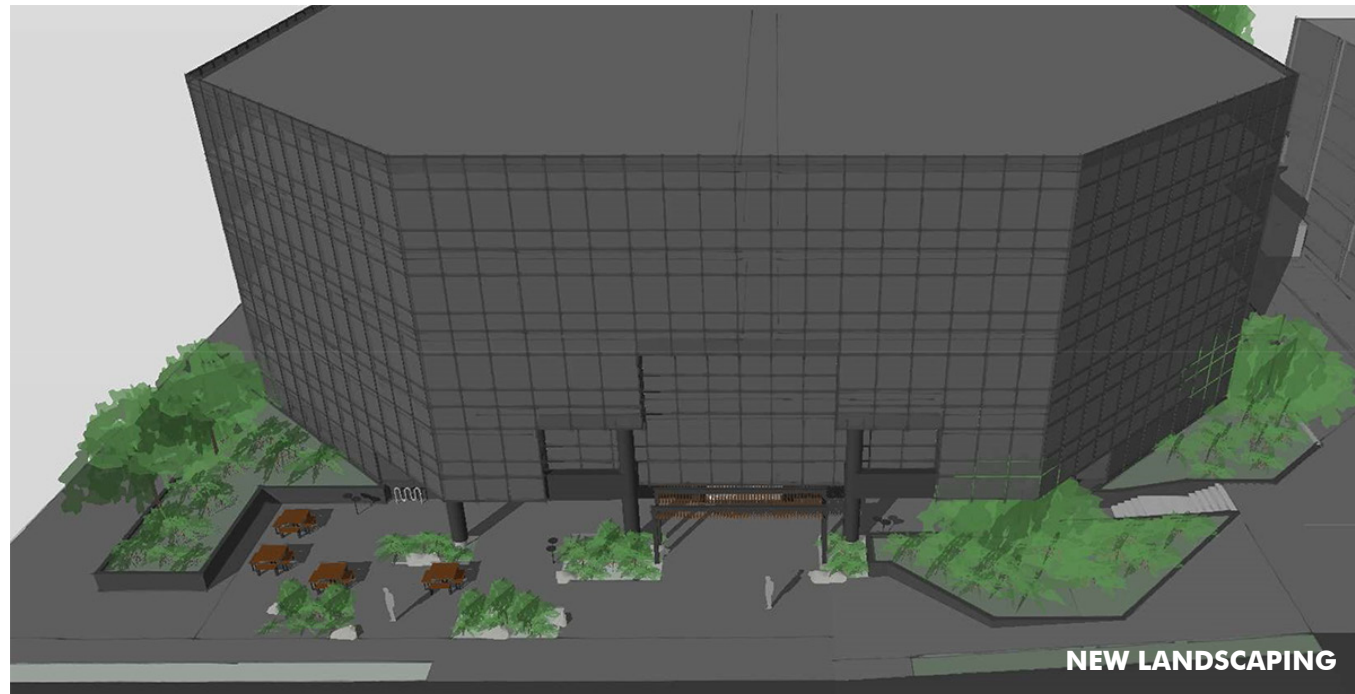
9706  
4TH AVENUE NORTHEAST  
Seattle, WA 98115

FOR LEASE  
**THE SALAL CREDIT UNION BUILDING**

9706  
4TH AVENUE NORTHEAST  
Seattle, WA 98115

 **NEW RENDERINGS**

 **NEW RENDERINGS**

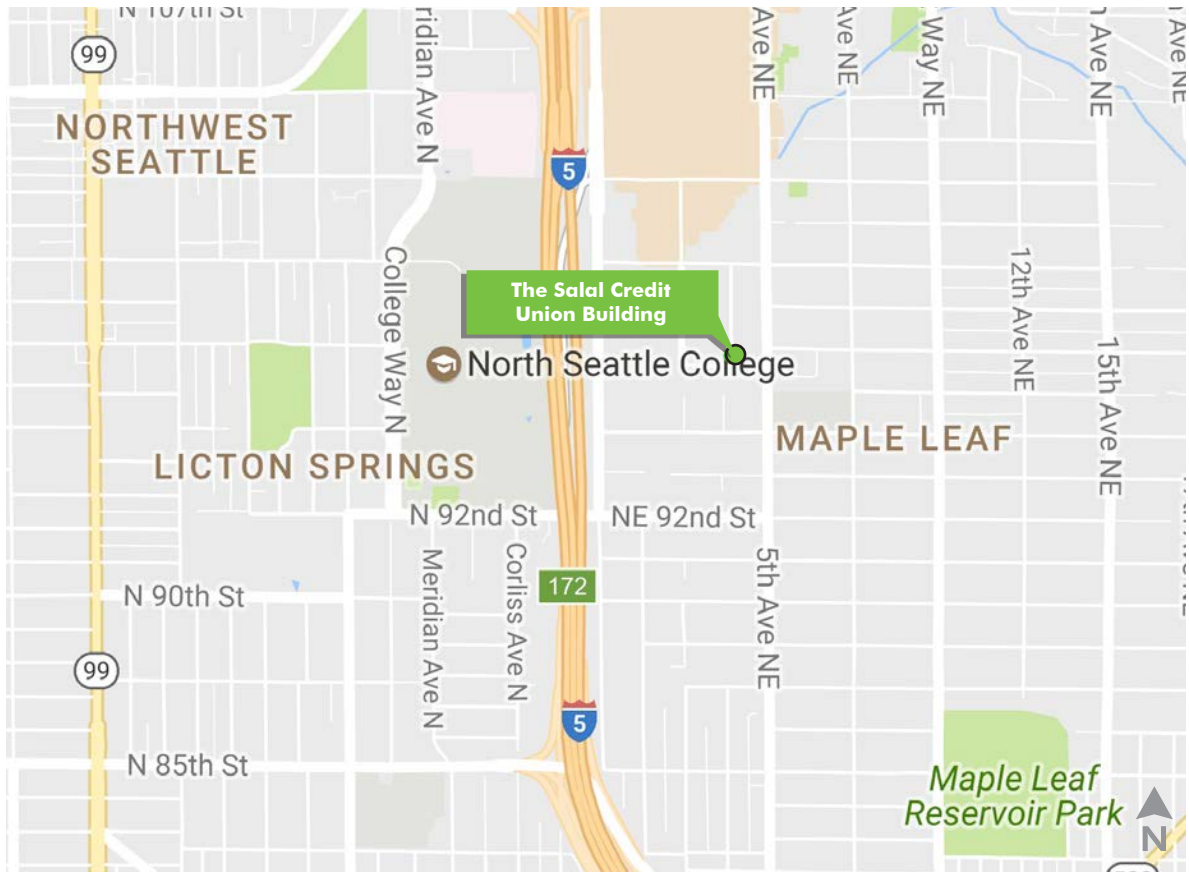


FOR LEASE  
**THE SALAL CREDIT UNION BUILDING**

**9706**  
**4TH AVENUE NORTHEAST**  
Seattle, WA 98115



**REGIONAL MAP**



**CONTACT US**

**DAN STUTZ**  
Senior Vice President  
+1 206 292 6097  
dan.stutz@cbre.com

**EVAN STEINRUCK**  
Senior Associate  
+1 206 292 6022  
evan.steinruck@cbre.com

**CBRE, INC.**  
1420 5th Avenue  
Suite 1700  
Seattle, WA 98101

© 2020 CBRE, Inc. All rights reserved. This information has been obtained from sources believed reliable, but has not been verified for accuracy or completeness. You should conduct a careful, independent investigation of the property and verify all information. Any reliance on this information is solely at your own risk. 5-21-2020JS