

**CROSS DOCK, REAR AND FRONT LOAD DISTRIBUTION SPACE IN
PHASE II OF NEW CLASS-A CORPORATE PARK IN SOUTHWEST HOUSTON**

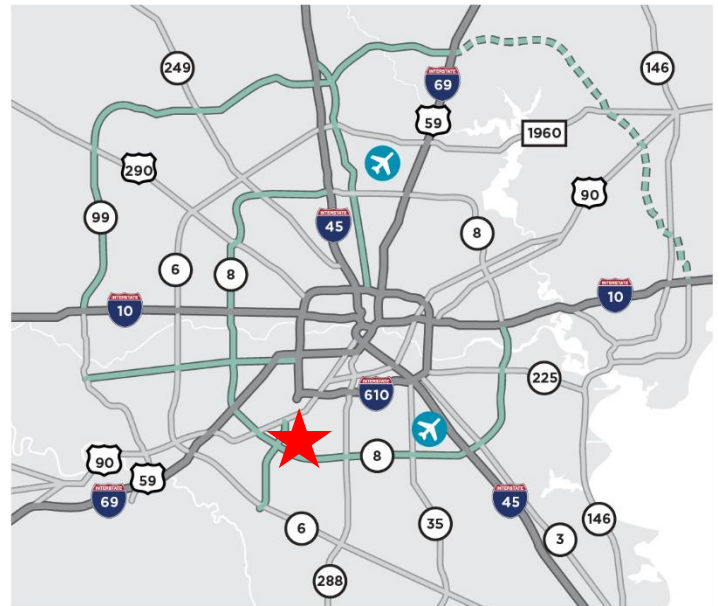
**BLVD
OAKS
BUSINESS PARK**



Property Highlights

- Located in Phase II of 125-acre, master-planned, deed-restricted corporate park in Southwest Houston, just off Beltway 8
- Rear Load Space Available (30' clear)
 - BLDG 5: 151,740 SF (Divisible)
 - BLDG 6: 109,800 SF (Divisible)
 - BLDG 7: 109,800 SF (Divisible)
- Cross Dock Space Available (36' clear)
 - BLDG 8: 532,440 SF (Divisible)
- Front Load Space Available (30' clear)
 - BLDG 9: 108,240 SF (Divisible)
 - BLDG 10: 124,200 SF (Divisible)
- ESFR Sprinkler Systems
- Trailer storage
- Secured truck courts
- Excellent access all Houston submarkets via Beltway 8, Southwest Freeway, Fort Bend Tollway, and Highway 288

[VIEW PROPERTY WEBSITE HERE](#)
[VIEW VIRTUAL TOUR HERE](#)



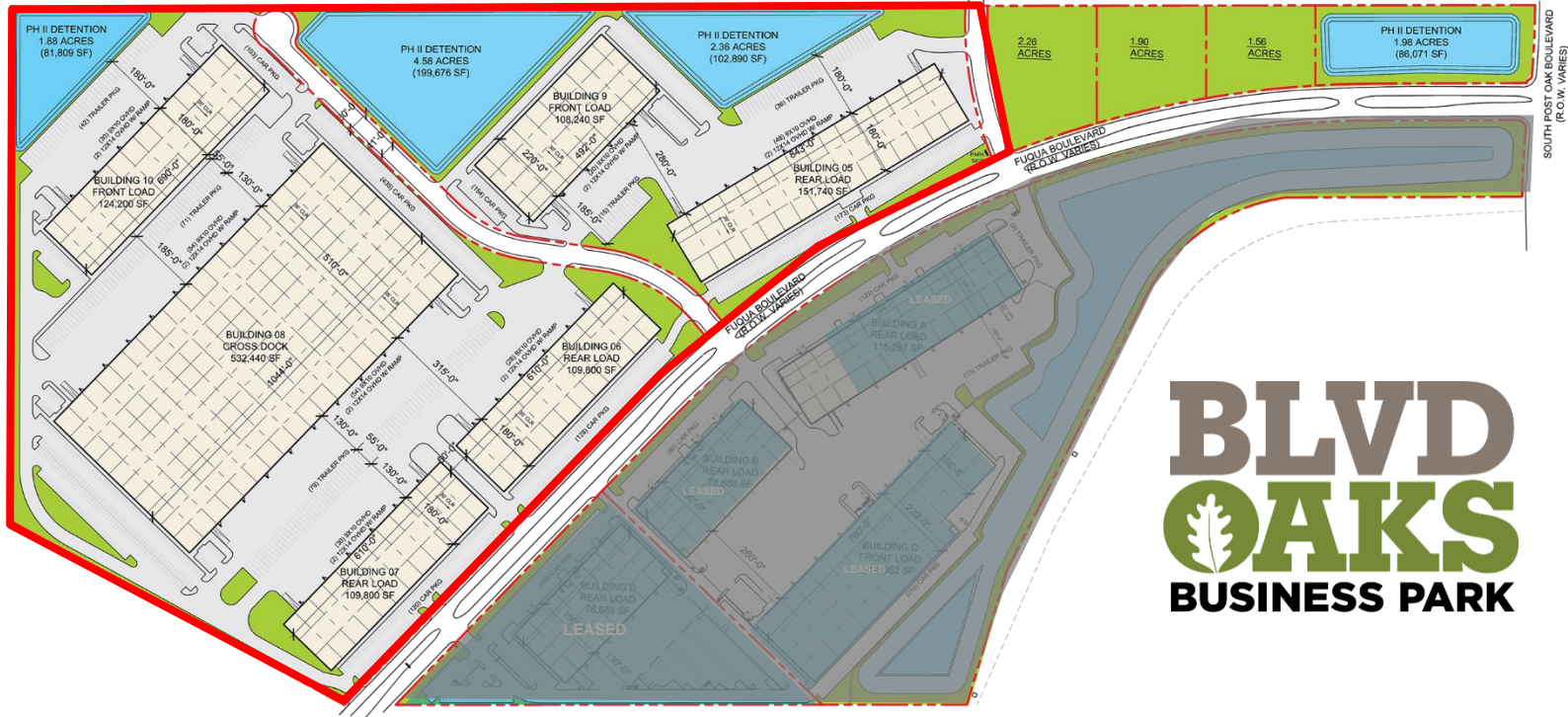
For more information:

Allison Bergmann
713.963.2865
allison.bergmann@cushwake.com

James E. Foreman
713.963.2824
jim.foreman@cushwake.com

CUSHMAN & WAKEFIELD
1330 Post Oak Blvd, Suite 2700
Houston, TX 77056
phone: +1 713 877 1700

PHASE II - COMING SOON



PHASE I

BLVD OAKS BUSINESS PARK

REAR LOAD

Building 5 – Rear Load:

- 151,740 SF available (divisible)
- 173 car parks; 36 trailer stalls
- Truck court: 180' & shared 280'
- Building depth: 180'
- 30' clear
- ESFR Sprinklers
- (48) 9 x 10 overhead doors
- (2) 12 x 14 OH doors with ramps

Building 6 – Rear Load:

- 109,800 SF available (divisible)
- 128 car parks; 79 shared trailer stalls
- Truck court: 185'
- Building depth: 180'
- 30' clear
- ESFR Sprinklers
- (28) 9 x 10 overhead doors
- (2) 12 x 14 OH doors with ramps

Building 7 – Rear Load:

- 109,800 SF available (divisible)
- 120 car parks; 79 shared trailer stalls
- Truck court: 185'
- Building depth: 180'
- 30' clear
- ESFR Sprinklers
- (30) 9 x 10 overhead doors
- (2) 12 x 14 OH doors with ramps

CROSS DOCK

Building 8 – Cross Dock:

- 534,440 SF available (divisible)
- 435 car parks; 71 trailer stalls
- Truck court: 185'
- Building depth: 510'
- 36' clear
- ESFR Sprinklers
- (108) 9 x 10 overhead doors
- (4) 12 x 14 OH doors with ramps

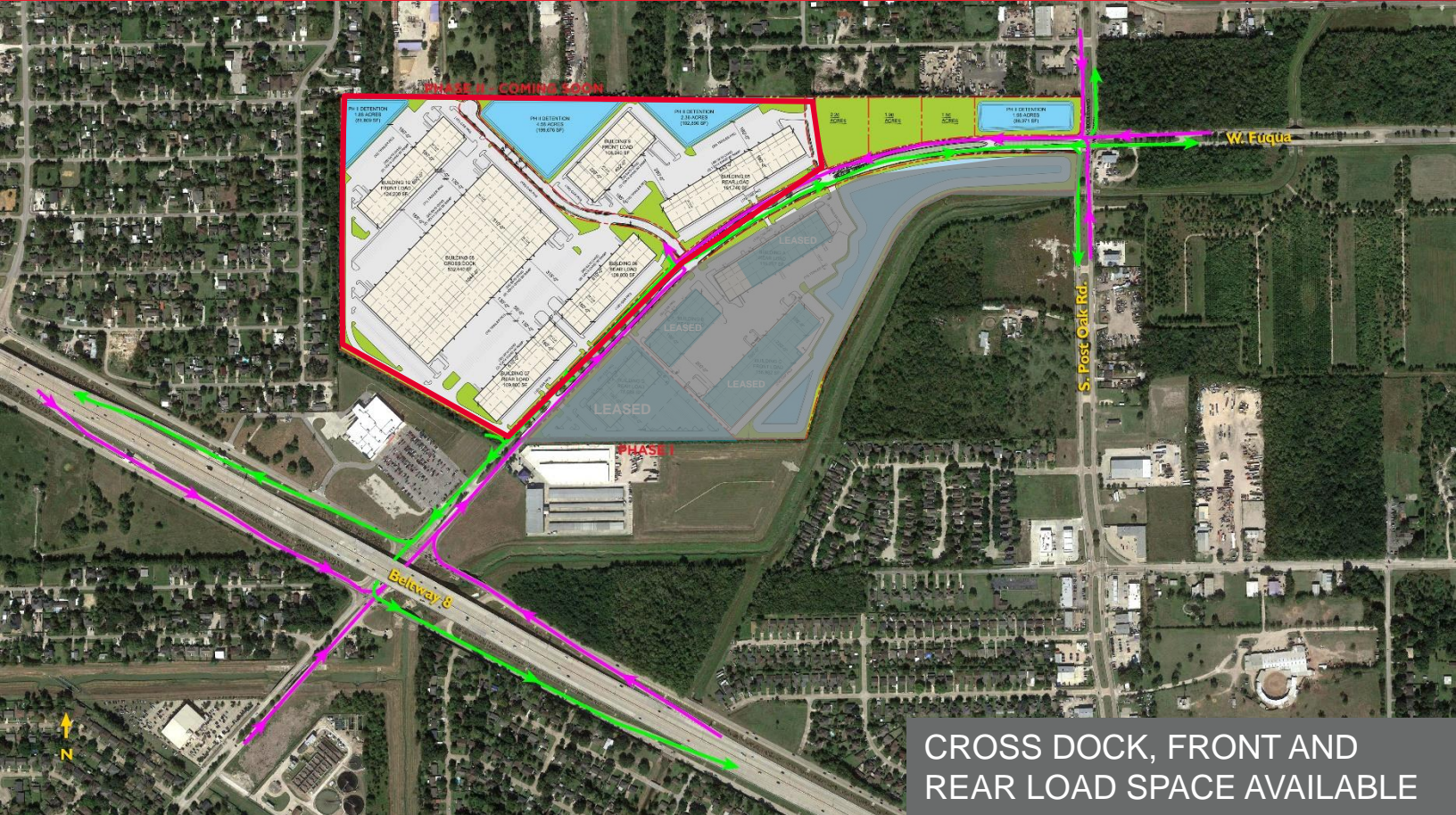
FRONT LOAD

Building 9 – Front Load:

- 108,240 SF available (divisible)
- 154 car parks; 15 trailer stalls
- Truck court: 185' & shared 280'
- Building depth: 220'
- 30' clear
- ESFR Sprinklers
- (20) 9 x 10 overhead doors
- (2) 12 x 14 OH doors with ramps
- 52' x 53'4" column spacing
- 60' speed bay

Building 10 – Front Load:

- 124,200 SF available (divisible)
- 103 car parks; 42 trailer stalls
- Truck court: 180'
- Building depth: 180'
- 30' clear
- ESFR Sprinklers
- (30) 9 x 10 overhead doors
- (2) 12 x 14 OH doors with ramps
- 52' x 60' column spacing



PROXIMITY TO SELECT LOCATIONS IN REGION

| DESTINATION | DISTANCE | DRIVE TIME |
|----------------------|----------|------------|
| CBD | 17 miles | 21 minutes |
| Texas Medical Center | 10 miles | 15 minutes |
| Galleria/Uptown | 11 miles | 15 minutes |
| Port of Houston | 18 miles | 20 minutes |
| Katy | 23 miles | 24 minutes |
| Sugar Land | 11 miles | 12 minutes |
| I-45 | 15 miles | 17 minutes |
| US-59 | 5 miles | 6 minutes |

ALLISON BERGMANN
(713) 963 2865
allison.bergmann@cushwake.com

JAMES E. FOREMAN
(713) 963 2824
jim.foreman@cushwake.com

CUSHMAN & WAKEFIELD
1330 Post Oak Boulevard | Suite 2700
Houston, TX 77056
www.cushmanwakefield.com

