



LARGE

WINDOWS

EXPOSED

BRICK

CONCRETE

FLOORS

OPEN

CEILINGS

923

FIFTEENTH STREET



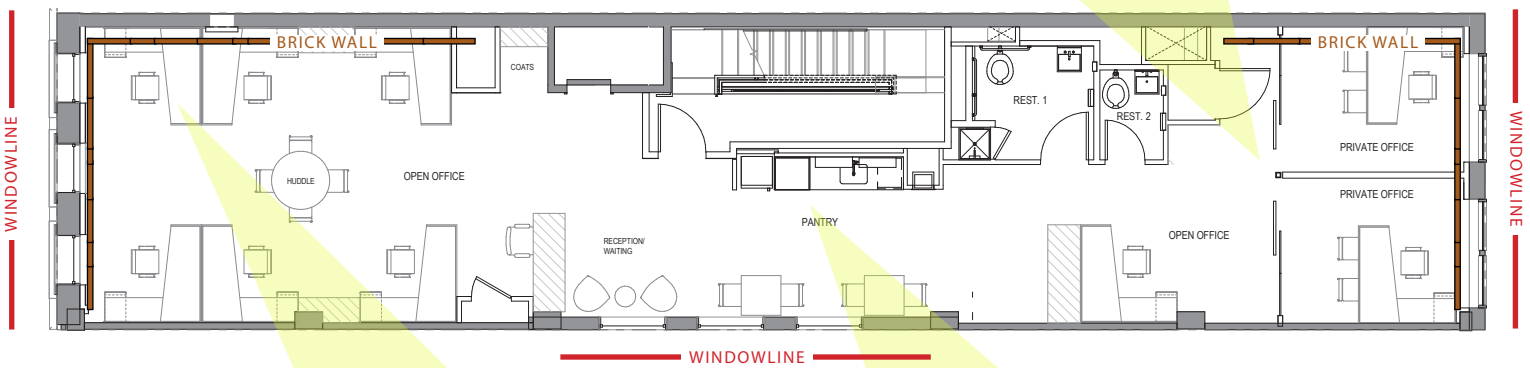
AVAILABILITIES	RSF	RATE/NOE
4TH FLOOR	1,476	\$7,500



923

FIFTEENTH STREET

TYPICAL FLOOR
1,476 RSF



FOR MORE INFORMATION, PLEASE CONTACT:

MARK KLUG
+1 202 585 5551
mark.klug@cbre.com

CARROLL CAVANAGH
+1 202 585 5586
carroll.cavanagh@cbre.com

EMILY EPPOLITO
+1 202 585 5695
emily.eppolito@cbre.com

DIMITRI HAJIMIHALIS
+1 202 585 5611
dimitri.hajimihalis@cbre.com

© 2018 CBRE, Inc. All rights reserved. This information has been obtained from sources believed reliable, but has not been verified for accuracy or completeness. Any projections, opinions, or estimates are subject to uncertainty. The information may not represent the current or future performance of the property. You and your advisors should conduct a careful, independent investigation of the property and verify all information. Any reliance on this information is solely at your own risk. CBRE and the CBRE logo are service marks of CBRE, Inc. and/or its affiliated or related companies in the United States and other countries. All other marks displayed on this document are the property of their respective owners. Photos herein are the property of their respective owners and use of these images without the express written consent of the owner is prohibited.

CBRE