

11712 Moorpark Street

Studio City, CA 91604

OFFICE SPACE FOR LEASE



Charles Dunn

CONTACT:

STACY VIERHEILIG-FRASER
Senior Managing Director
CalDRE #00986794
Direct | 818.455.8201
svierheilig@charlesdunn.com

CHARLES DUNN COMPANY, INC.

12925 Riverside Drive, Suite 201 | Sherman Oaks, CA 91423 | Lic. #01201641 | charlesdunn.com

PROPERTY DETAILS

11712 Moorpark Street is a office building in Studio City. The Property is adjacent to Universal City, Hollywood & Burbank and features newly renovated restrooms.

PROPERTY FACTS

Space Available: Suite 102: ± 611 SF
Suite 203: ± 611 SF (Avail. Nov. 1, 2018)

Lease Rate: \$3.00/SF Full Service Gross

Parking: One (1) parking space at \$50.00/month

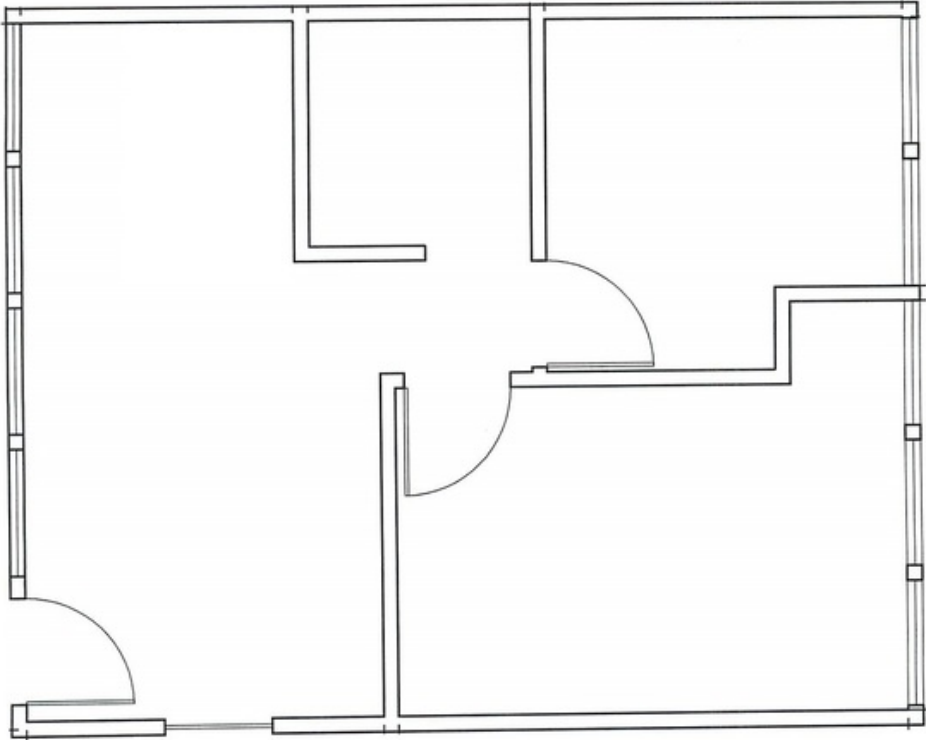
Term: 3 years

PROPERTY HIGHLIGHTS

- > Balcony
- > New ceiling, LED lights, and flooring
- > Quiet, nicely landscaped building
- > Beautiful setting with courtyards and outdoor space
- > Bright, windowed offices

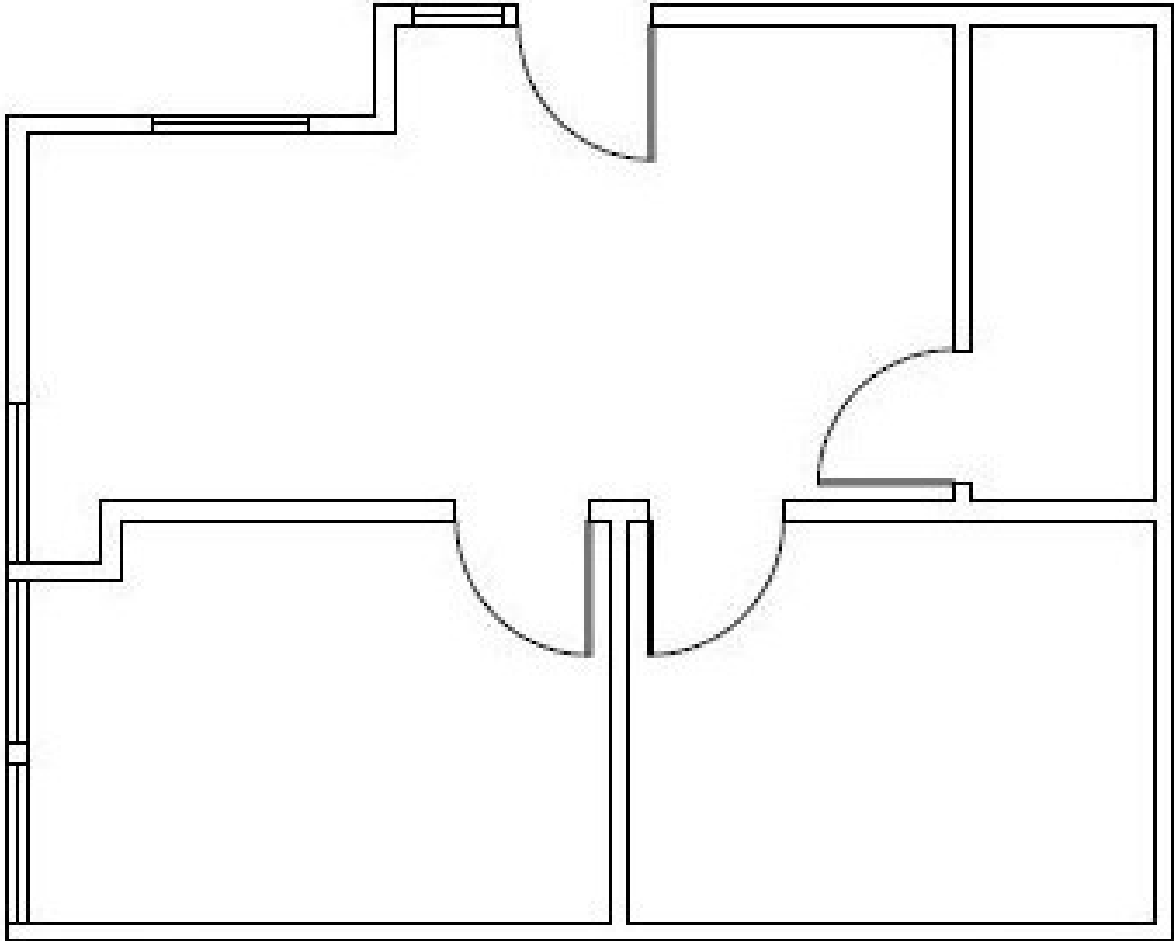


FLOOR PLANS



UNIT 102





UNIT 203

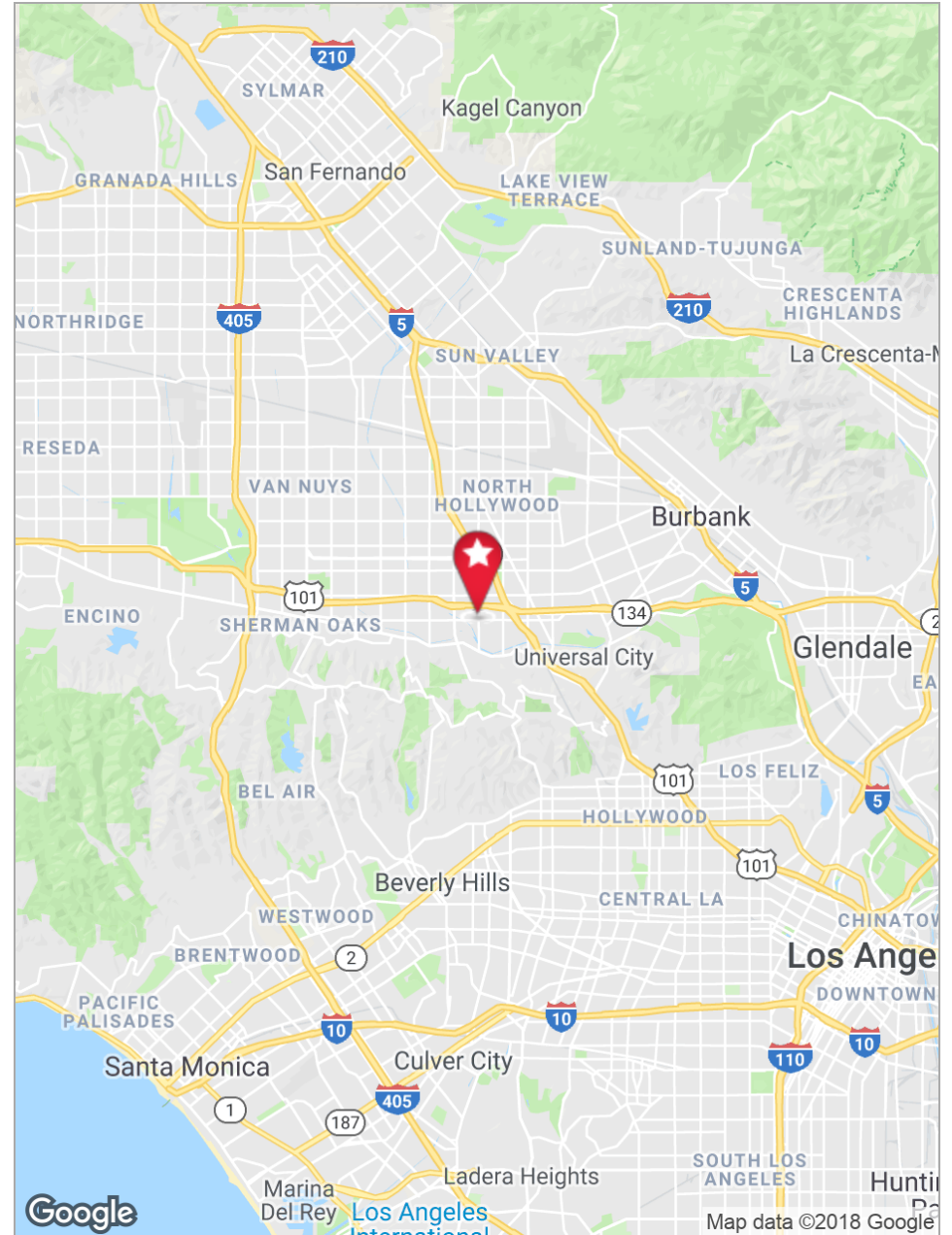
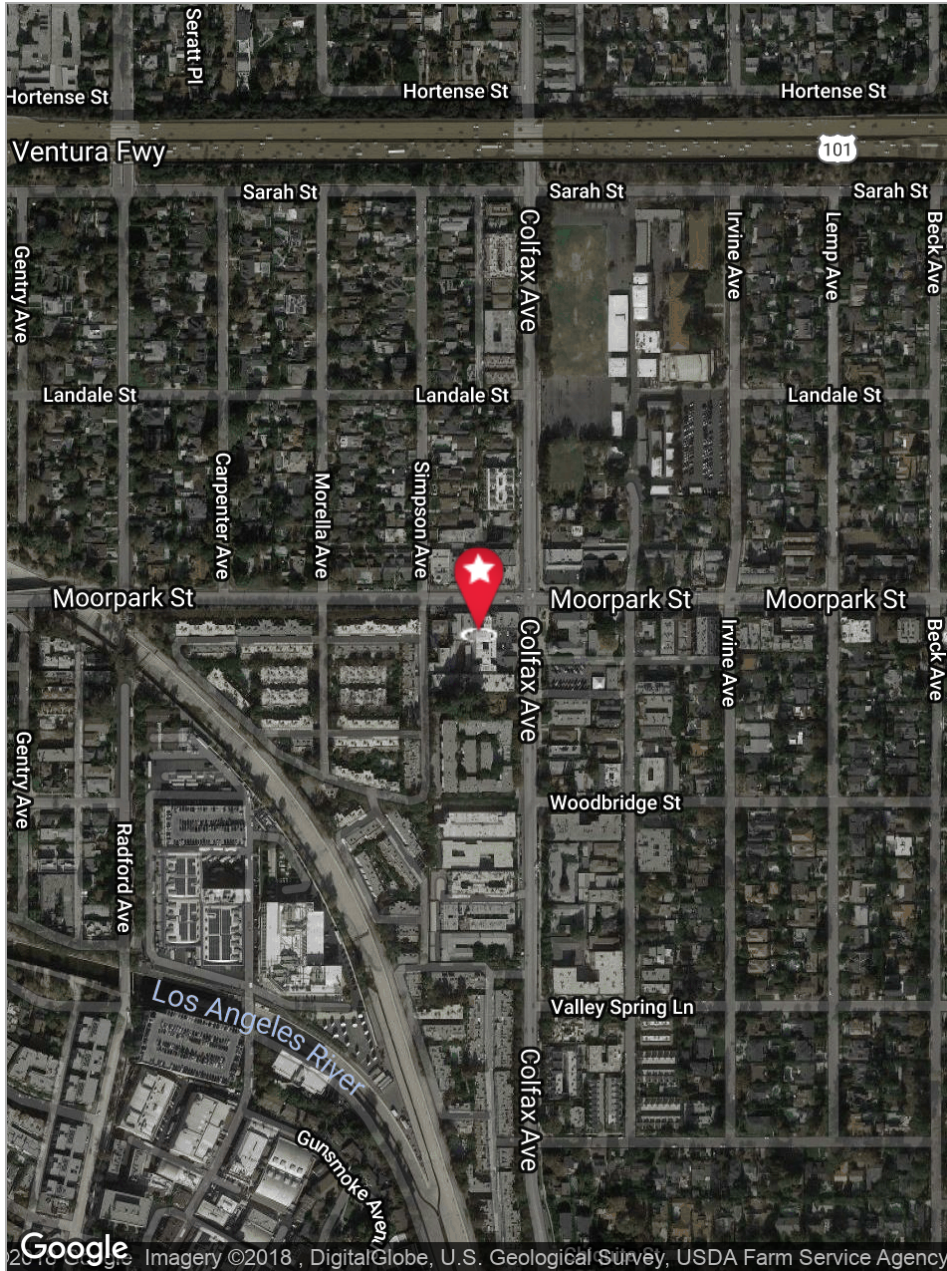
PROPERTY PHOTOS



PROPERTY PHOTOS



PROPERTY MAPS



11712 Moorpark Street

Studio City, CA 91604

STACY VIERHEILIG-FRASER
Senior Managing Director
CalDRE #00986794
Direct | 818.455.8201
svierheilig@charlesdunn.com

Charles Dunn Company, Inc. | 12925 Riverside Drive, Suite 201 | Sherman Oaks, CA 91423 | Lic. #01201641 | charlesdunn.com